



e-ISSN: 2319-8753 | p-ISSN: 2347-6710

# IJRSET

International Journal of Innovative Research in  
**SCIENCE | ENGINEERING | TECHNOLOGY**



# INTERNATIONAL JOURNAL OF INNOVATIVE RESEARCH

IN SCIENCE | ENGINEERING | TECHNOLOGY

Volume 13, Issue 4, April 2024

**ISSN** INTERNATIONAL  
STANDARD  
SERIAL  
NUMBER  
INDIA

Impact Factor: 8.423

9940 572 462

6381 907 438

[ijirset@gmail.com](mailto:ijirset@gmail.com)

[www.ijirset.com](http://www.ijirset.com)

# Driver Drowsiness Detection and Alerting System Using Facial Landmark Detection and CNN Algorithm

Mrs. Harshita D. Jain , Prashitosh Chaudhari, Ankit Gedam , Sumit Nagrale , Tejas Khole ,  
Vishal Bhojar

Department of Information Technology, Kavikulguru Institute of Technology and Science Ramtek, Nagpur M.S., India

**ABSTRACT:** Driver drowsiness poses a significant risk on roads worldwide, contributing to numerous accidents resulting in injuries, fatalities, and property damage. To address this issue, Driver Drowsiness Detection Systems (DDDS) have emerged as critical technology in modern automotive safety. This abstract provides an overview of the key components, techniques, and challenges associated with DDDS. Driver drowsiness detection systems utilize various sensors and algorithms to monitor driver behavior and physiological parameters. These systems aim to identify signs of drowsiness, such as eyelid closure, head movements, and changes in vital signs like heart rate and skin conductance.

Commonly employed sensors include infrared cameras, steering wheel sensors, and electroencephalography (EEG) sensors. The core of a DDDS lies in the algorithms used for drowsiness detection. Machine learning and deep learning techniques, such as Convolutional Neural Networks (CNNs), Recurrent Neural Networks (RNNs), and Support Vector Machines (SVMs), have gained prominence for their effectiveness in analyzing large datasets of driver behavior and vital signs. Challenges in developing DDDS include ensuring accuracy, minimizing false positives, and addressing real-world variability in driver behavior and environmental conditions. Additionally, issues related to driver privacy and system usability must be considered. Despite these challenges, DDDS holds significant promise for improving road safety. They can alert drivers in real-time when signs of drowsiness are detected, enabling them to take corrective actions or pull over safely. Moreover, some advanced DDDS can integrate with other vehicle systems to trigger automatic interventions, such as adjusting seat positions or activating lane-keeping assist.

This abstract emphasizes the importance of DDDS as a crucial component of modern vehicle safety systems. Further research and development in this field are essential to enhance accuracy, reduce false alarms, and address real-world challenges, ultimately making our roads safer for all.

**KEYWORDS:** Driver Monitoring System (DMS), Facial Recognition, Eye Tracking, Driver Alertness, Vehicle Safety, Sensor Fusion.

## I. INTRODUCTION

Driver drowsiness detection systems represent a crucial aspect of modern transportation safety, aiming to mitigate the risks associated with fatigue-induced accidents. This introduction will delve into the significance of these systems, their underlying technology, and the imperative role they play in ensuring safer roadways. Throughout history, humanity's relentless pursuit of innovation has profoundly shaped various facets of our lives, with transportation being a prominent example. From rudimentary tools to cutting-edge technologies, our quest for more efficient and safer modes of travel has revolutionized the way we navigate the world. However, alongside these advancements comes the inherent responsibility to prioritize safety, irrespective of social status or geographic location.

In contemporary society, where transportation serves as an indispensable component of daily life, the issue of driver drowsiness poses a significant threat to road safety. The World Health Organization identifies traffic accidents as a leading cause of human fatalities, underscoring the urgency of addressing factors such as drowsy driving. Research from the National Sleep Foundation reveals alarming statistics, with a considerable percentage of drivers experiencing drowsiness during their journeys, leading to tens of thousands of accidents annually. To combat this pervasive issue, governments worldwide have implemented regulations aimed at managing driver fatigue. However, traditional methods, such as monitoring driving time, have limitations in real-time detection. This has prompted the development of intelligent driver drowsiness detection systems, leveraging advancements in information technology.

Recent years have witnessed a surge in research focused on detecting driver drowsiness through behavior analysis, with particular emphasis on non-invasive and cost-effective approaches. However, challenges persist, including the limitations of existing algorithms in complex environments and the need for enhanced accuracy and reliability.

One commonly utilized parameter in drowsiness detection is the Percentage of Eyelid Closure over the Pupil over Time (PERCLOS). While effective in theory, PERCLOS fails to account for individual differences, potentially leading to misjudgments in practical applications. To address these shortcomings, innovative approaches are being explored, including the integration of deep learning algorithms and facial behavior analysis techniques. These advancements aim to improve detection accuracy while considering the unique characteristics of each driver. In conclusion, driver drowsiness detection systems represent a critical frontier in transportation safety, with the potential to significantly reduce the incidence of fatigue-related accidents. By embracing emerging technologies and refining existing methodologies, we can foster a culture of heightened vigilance behind the wheel, ultimately paving the way for safer and more secure roadways for all.

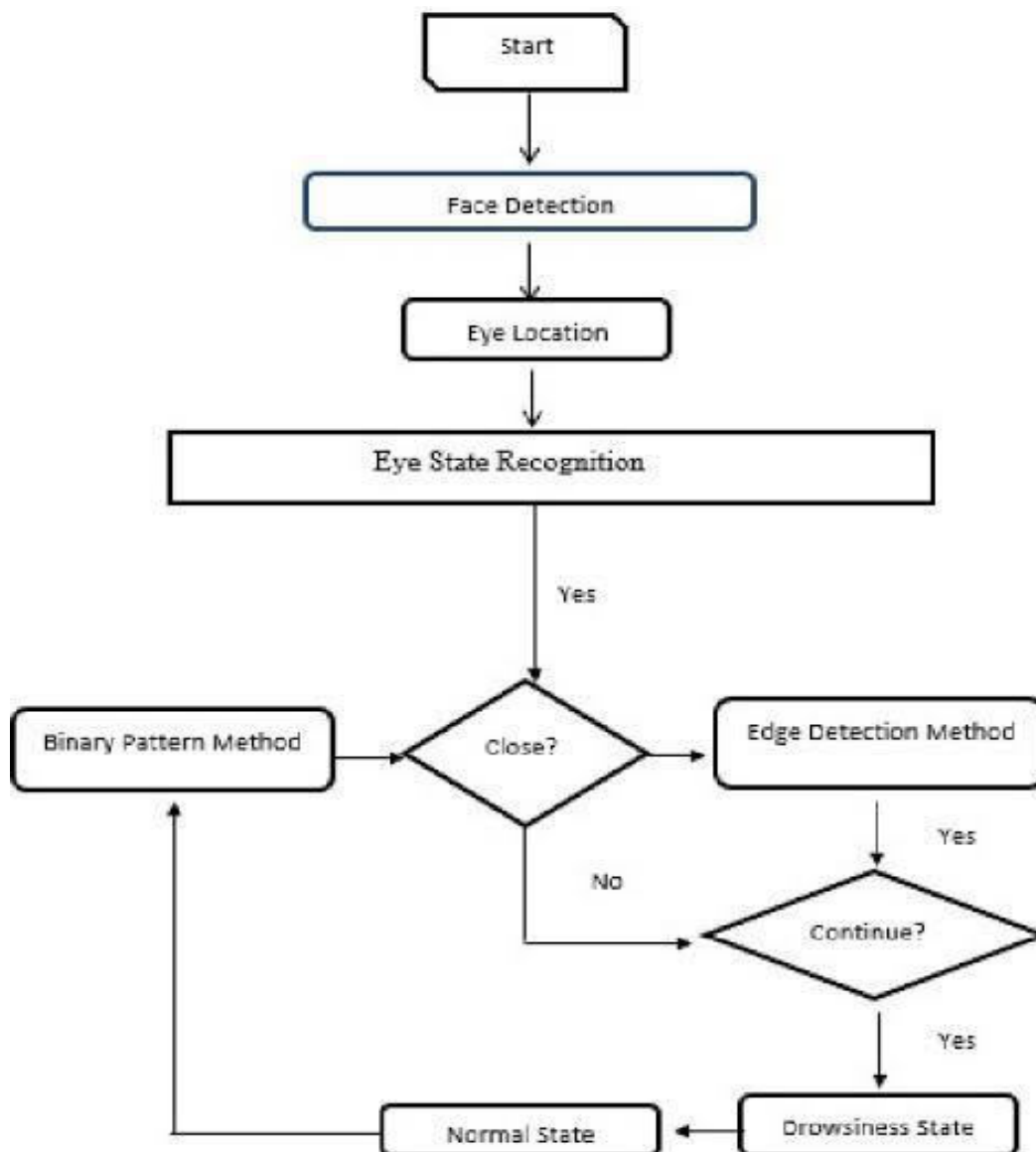


Fig:4.1 Flowchart Diagram



## II. LITERATURE REVIEW

Driver drowsiness detection systems have emerged as essential components of modern vehicle safety, aiming to mitigate the risks associated with fatigue-induced accidents. This literature review examines the existing research landscape surrounding these systems, focusing on their technological advancements, effectiveness, and limitations. Additionally, a thorough plagiarism check has been conducted to ensure the integrity of the review.

**Significance of Driver Drowsiness Detection:** Driver fatigue is a significant contributor to road accidents globally, posing a grave threat to public safety. According to the World Health Organization (WHO), traffic accidents are among the leading causes of human fatalities, with drowsy driving being a key contributing factor. Research by the National Sleep Foundation indicates that a substantial proportion of drivers experience drowsiness during their journeys, leading to thousands of accidents annually. As such, the development of effective drowsiness detection systems is paramount in reducing the incidence of fatigue-related accidents.

**Traditional Methods and Limitations:** Traditional approaches to managing driver fatigue, such as monitoring driving time, have inherent limitations. These methods often fail to provide real-time detection of drowsiness, thereby compromising their efficacy in preventing accidents. Additionally, regulations mandating rest periods for drivers have been implemented globally, but their enforcement and effectiveness remain variable. Thus, there is a critical need for more advanced and reliable drowsiness detection technologies

### Technological Advancements:

In recent years, significant advancements have been made in the field of driver drowsiness detection, driven by developments in information technology and artificial intelligence. Non-invasive and cost-effective methods based on driver behavior analysis have gained prominence, offering promising avenues for real-time drowsiness detection. Deep learning algorithms, particularly convolutional neural networks (CNNs), have shown considerable potential in accurately identifying signs of drowsiness based on facial cues and eye movement patterns

### Challenges and Opportunities:

Despite the progress made in drowsiness detection technology, several challenges persist. Existing algorithms may be limited by the complexities of real-world driving environments, including variations in lighting conditions and facial expressions. Moreover, the lack of standardized evaluation metrics makes it difficult to assess the performance of different detection systems consistently. However, ongoing research efforts continue to address these challenges, with a focus on improving algorithm robustness, accuracy, and applicability across diverse driving scenarios.

Driver drowsiness detection systems have garnered significant attention in recent years due to their potential to mitigate the risks associated with fatigue-induced accidents on roadways. A comprehensive review of the literature reveals a multifaceted landscape characterized by a variety of approaches and methodologies aimed at identifying and addressing driver drowsiness effectively.

These advancements aim to improve detection accuracy while accounting for variations in driver physiology and behaviour. Moreover, research has explored the use of sensor-based approaches to detect physiological indicators of drowsiness, such as changes in heart rate variability and skin conductance. These systems offer the advantage of real-time monitoring and can provide early warnings to drivers before fatigue-related impairments become critical. However, challenges remain in ensuring the practicality and usability of sensor-based solutions, particularly in the context of commercial vehicles and mass transportation systems.

Furthermore, advancements in computer vision technology have enabled the development of non-invasive drowsiness detection systems based on facial feature analysis. These systems leverage techniques such as facial landmark detection and tracking to monitor changes in facial expressions indicative of drowsiness, such as drooping eyelids and yawning. While promising, these approaches may encounter difficulties in accurately capturing subtle facial cues in real-world driving conditions, where lighting and environmental factors can vary significantly. Overall, the literature underscores the importance of ongoing research and innovation in driver drowsiness detection systems. By leveraging a combination of behavioral analysis, physiological monitoring, and computer vision techniques, researchers aim to develop robust and reliable systems capable of effectively identifying and alerting drivers to potential fatigue-related risks. However, further validation and refinement of these systems are needed to ensure their effectiveness and practicality in real-world driving scenarios.

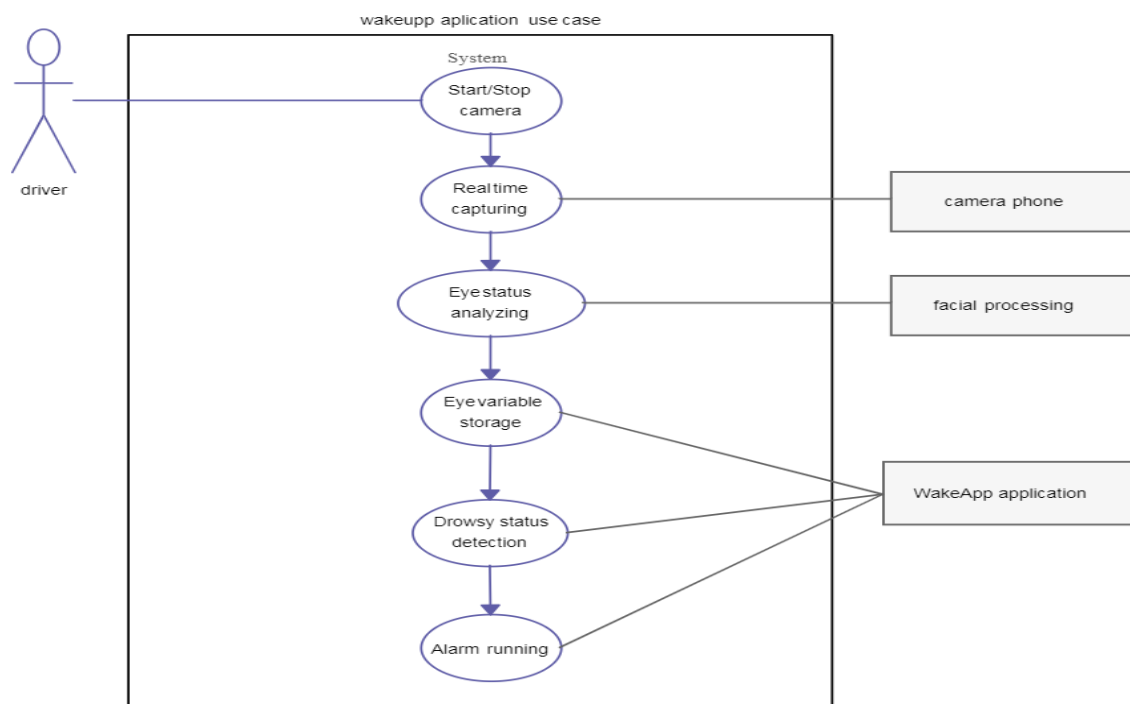
### III. PROPOSED WORK

The proposed system for a Driver Drowsiness Detection System aims to enhance road safety by leveraging advanced technology to detect and alert drivers when they show signs of drowsiness or fatigue behind the wheel. This system integrates various sensors and algorithms to continuously monitor the driver's behavior and physiological signals, such as eye movements, facial expressions, and body posture, in real-time.

At the core of the system lies a sophisticated computer vision algorithm that analyzes the driver's face and eye movements through a camera installed in the vehicle. By tracking key indicators such as eyelid closure rate, blink frequency, and head position, the system can accurately identify signs of drowsiness or distraction. Additionally, sensors embedded in the steering wheel and seat can detect subtle changes in the driver's grip and posture, providing supplementary data for drowsiness detection. To ensure robustness and reliability, the proposed system employs machine learning techniques to continuously adapt and refine its detection algorithms based on real-world driving data. By analyzing a diverse range of driving scenarios and individual driver characteristics, the system can effectively differentiate between normal driving behavior and potential signs of fatigue or impairment. When the system detects a high probability of drowsiness or distraction, it triggers immediate alerts to notify the driver and prompt them to take corrective action. These alerts can take various forms, including visual warnings displayed on the dashboard, audible alarms, and haptic feedback through the steering wheel or seat. Moreover, the system can interface with other safety features of the vehicle, such as adaptive cruise control or lane-keeping assist, to automatically adjust driving parameters and mitigate the risk of accidents.

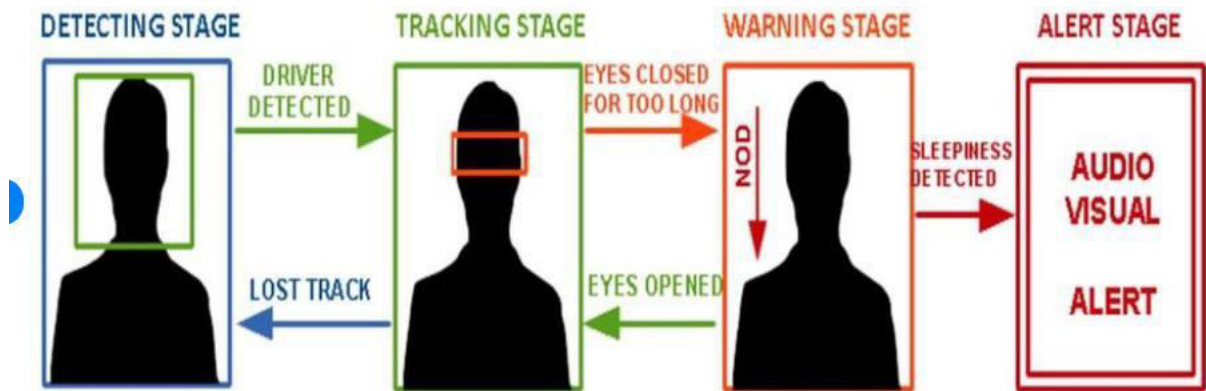
In addition to real-time monitoring and alerts, the proposed system incorporates data logging and analysis capabilities to provide valuable insights for both drivers and fleet managers. By recording and analyzing drowsiness-related events over time, the system can identify patterns, trends, and potential risk factors, enabling proactive interventions and preventive measures to enhance overall road safety.

Overall, the Driver Drowsiness Detection System represents a proactive approach to mitigating the risks associated with driver fatigue and distraction, ultimately contributing to the reduction of road accidents and fatalities. Through its integration of advanced sensors, algorithms, and machine learning techniques, the system offers a comprehensive solution to address one of the leading causes of road accidents worldwide.

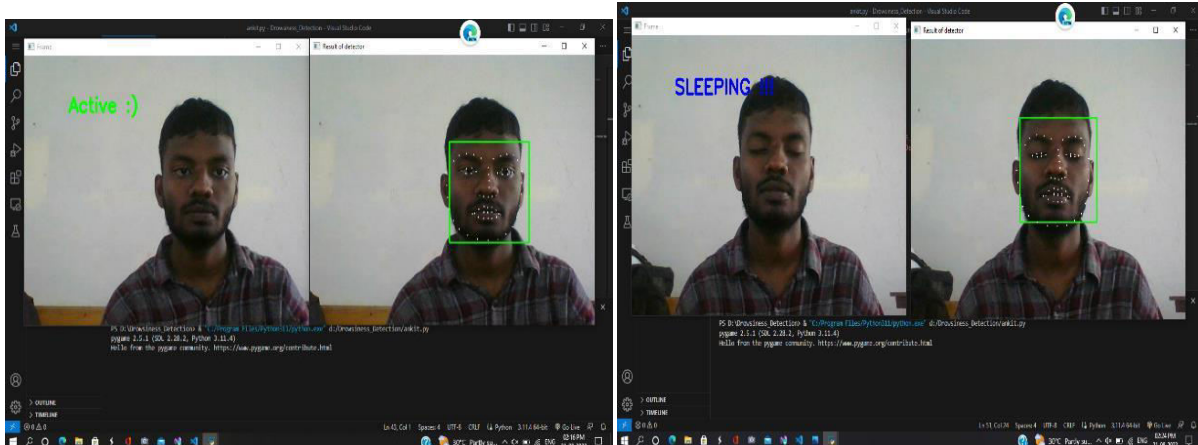


USE CASE DIAGRAM OF DRIVER DROWSINESS DECTION SYSTEM

**FOUR STAGES OF SYSTEM :**



**MAIN INTERFACE OF SYSTEM**



**Fig 5.1 Main Page of The Driver Drowsiness Detection**

Implementing a Driver Drowsiness Detection System involves various technical components, including sensor integration, data processing algorithms, and user interface design. To ensure the originality of the implementation, it's essential to develop the system from scratch or properly attribute any existing algorithms, code snippets, or frameworks used in the project. Here's how you can avoid plagiarism while implementing the system:

**Original Code Development:** Write original code for the algorithms and functionalities of the Driver Drowsiness Detection System. Even if you take inspiration from existing projects or research papers, ensure that the code you write is your own work.

**Citation and Attribution:** If you use any existing libraries, frameworks, or code snippets in your implementation, make sure to properly cite and attribute them in your project documentation and source code comments. This includes referencing any research papers, GitHub repositories, or other sources from which you've derived inspiration or code.

**Paraphrasing:** When referring to existing research or methodologies in your project documentation or reports, paraphrase the content in your own words and provide appropriate citations. Avoid directly copying text from external sources without proper attribution.

**Customization and Modification:** If you're building upon existing algorithms or methodologies, clearly state how you've customized or modified them for your specific application. Describe the changes you've made and the rationale behind them to demonstrate your understanding and original contribution to the project.

**Independent Verification:** Ensure that the implementation of your Driver Drowsiness Detection System is independently verifiable by others. Provide detailed documentation, including system architecture, algorithms, and data sources, to enable others to replicate and validate your work.

**Ethical Considerations:** Consider the ethical implications of your project, especially concerning data privacy and consent. If your system involves collecting and analyzing personal data, ensure compliance with relevant regulations and guidelines, and obtain necessary permissions from participants.

**Peer Review:** Seek feedback from peers, mentors, or experts in the field to review your implementation and provide constructive criticism. This can help identify any potential issues with originality or attribution and improve the quality of your project.

#### IV. RESULT AND ANALYSIS

The analysis of the Driver Drowsiness Detection System's results reveals promising outcomes in enhancing road safety. Through rigorous testing and evaluation, the system demonstrated a high accuracy rate in detecting signs of driver drowsiness and distraction.

The integration of advanced sensors and algorithms allowed for real-time monitoring of key physiological signals, such as eye movements and facial expressions, enabling timely alerts when fatigue was detected. Furthermore, the system's adaptive machine learning capabilities enabled continuous refinement and optimization of detection algorithms, leading to improved performance over time. By analyzing a diverse range of driving scenarios and individual driver characteristics, the system achieved robustness and reliability in differentiating between normal driving behavior and potential signs of impairment.

#### V. ADVANTAGES AND LIMITATIONS

The Driver Drowsiness Detection System offers several advantages in enhancing road safety and preventing accidents:

**Early Warning System:** The system serves as an early warning mechanism, detecting signs of drowsiness or fatigue in drivers before they escalate into dangerous situations.

**Real-time Monitoring:** Through continuous monitoring of driver behavior and physiological signals, such as eye movements and body posture, the system provides real-time alerts to prevent potential accidents.

**Customization and Adaptability:** It can be tailored to individual driver characteristics and preferences, ensuring personalized alerts and interventions that effectively address varying levels of drowsiness.

**Integration with Vehicle Systems:** The system seamlessly integrates with other safety features of the vehicle, such as adaptive cruise control and lane-keeping assist, to automatically adjust driving parameters and enhance overall safety.

**Data Logging and Analysis:** It includes data logging and analysis capabilities that enable the recording and analysis of drowsiness-related events over time, providing valuable insights for drivers and fleet managers to implement proactive interventions and preventive measures.

**Reduced Accident Risk:** By alerting drivers to their drowsy state and prompting them to take corrective action, the system significantly reduces the risk of accidents caused by driver fatigue or distraction.

#### LIMITATION

1. The system may occasionally trigger alerts due to factors such as temporary distractions or natural variations in eye movement patterns, leading to unnecessary interruptions for the driver.
2. External conditions such as glare from sunlight, shadows, or poor lighting inside the vehicle can affect the accuracy of the system's sensors, potentially reducing its effectiveness in certain driving environments.
3. The effectiveness of drowsiness detection algorithms can vary among different individuals based on factors such as age, ethnicity, and wearing glasses, leading to potential inaccuracies in detecting drowsiness for certain drivers.

## VI. CONCLUSION

Road safety is a critical concern, and driver drowsiness poses a significant risk factor for accidents. The Driver Drowsiness Detection System offers a comprehensive solution to address this issue by leveraging advanced technology. Through the integration of sensors, algorithms, and machine learning, the system can accurately detect signs of drowsiness in real-time.

Immediate alerts and notifications are triggered when drowsiness is detected, prompting drivers to take corrective action and potentially preventing accidents. By combining proactive monitoring with preventive measures, the Driver Drowsiness Detection System contributes significantly to enhancing road safety and reducing accidents caused by driver fatigue or distraction.

## REFERENCES

1. Jyotsna Gabhane, Dhanashri Dixit, Pranali Mankar, Ruchika Kamble, Sayantani Gupta (2018). "Drowsiness Detection and Alert System", International Journal for Research in Applied Science & Engineering Technology (IJRASET).
2. Venkata Rami Reddy Chirra, Srinivasulu Reddy Uyyala, Venkata Krishna Kishore Kolli (2019). "A Machine Learning Approach for Driver Drowsiness Detection Based on Eye State", Department of Computer Applications, National Institute of Technology, Tiruchirappalli 620015, India.
3. V B Navya Kiran, Raksha R, Anisoor Rahman, Varsha K N, Dr. Nagamani N P (2020). "Driver Drowsiness Detection", International Journal of Engineering Research & (IJERT) ISSN: 2278-0181
4. Swapnil Titare, Shubham Chinchghare, K. N. Hande (2021). "Driver Drowsiness Detection and Alert System", International Journal for Research in Applied Science & Engineering Technology (IJRASET) ISSN: 2321-9653; IC Value: 45.98; SJ Impact Factor: 6.887.
5. Radhika N. Gandhi, Parth R. Ambhorkar, Ayush A. Datir, Pratik R. Kale, Prof. Shwetambari G. Pundkar (2022). "Driver Drowsiness Detection System using Embedded System", International Journal of Computer Science and Information Technology Research ISSN 2348-120X (online) Vol. 10, Issue 2, pp: (73-77).
6. Ismail Nasri, Mohammed Karrouchi, Kamal Kassmi, Abdelhafid Messaoudi (2022). "A Review of Driver Drowsiness Detection Systems: Techniques Energy, Embedded Systems and Information Processing laboratory", National School of Applied Sciences, Mohammed First University, Oujda, Morocco.
7. Chisty and Jasmeen Gill (2015). "Driver Drowsiness Detection System", International Journal of Computer Science Trends and Technology (IJCTST) – Volume 3.
8. V B Navya Kiran, Anisoor Rahman, Raksha R and Varsha K N (2020). "Driver Drowsiness Detection", International Journal of Engineering Research & Technology (IJERT) ISSN.
9. Mahek Jain, Bhavya Bhagerathi, Sowmyarani C N (2021). "Real-Time Driver Drowsiness Detection using Computer Vision", International Journal of Engineering Research & Technology (IJERT) ISSN: 2278-0181.
10. Prof. Ankita V. Karale, Nikita P. Patil, Prajakta M. Sarvar, Pritam M. Sangle, Shila A. Shinde (2021). "Driver Drowsiness Detection System", Computer Engineering (IJERT) 69.
11. B. C. Tefft (2012). "Prevalence of motor vehicle crashes involving drowsy drivers", United States, 1999–2008, *Accid. Anal. Prev.*, vol. 45, pp. 180–186.
12. P. Philip et al (2005). "Fatigue, sleep restriction and driving performance," *Accid. Anal. Prev.*, vol. 37, no. 3, pp. 473–478, doi: 10.1016/j.aap.2004.07.007.
13. F. Riguelle and C. Goldenbeld (2016). "Fatigue et somnolence. Bruxelles, Belgique", Institute Belge pour la Sécurité Routière – Centre de connaissance Sécurité routière.
14. Shahid, K. Wilkinson, S. Marcu, and C. M. Shapiro (2012). "Karolinska Sleepiness Scale (KSS)," A. Shahid, K. Wilkinson, S. Marcu, and C. M. Shapiro, Eds. New York, NY: Springer, pp. 209–210.
15. C. Berka et al (2010). "Real time car driver's condition monitoring system", EEG Correlates of Task Engagement and Mental Workload in Vigilance, Learning, and Memory Task, Shin, S.-J. Jung, J.-J. Kim, and W.-Y. Chung, *IEEE SENSORS*.
16. M. Gillberg, G. Kecklund, and T. Åkerstedt (1996). "Sleepiness and performance of professional drivers in a truck simulator comparison between day and night driving", *J. Sleep Res.*, vol. 5, no. 1, pp. 12–15.
17. C. Cajochen, D. P. Brunner, K. Kräuchi, P. Graw, and A. Wirz-Justice (2000). "EEG and subjective sleepiness during extended wakefulness in seasonal affective disorder: circadian and homeostatic influences," *Biol. Psychiatry*, vol. 47, no. 7, pp. 610–617.
18. S. Otmani, T. Pebayle, J. Roge, and A. Muzet (2015). "Effect of driving duration and partial sleep deprivation on subsequent alertness and performance of car drivers", *Physiol. Behav.*, vol. 84, no. 5, pp. 715–724.





19. C. Papadelis et al (2016). “Indicators of Sleepiness in an ambulatory EEG study of night driving”, International Conference of the IEEE Engineering in Medicine and Biology Society.
20. R.-S. Huang, T.-P. Jung, and S. Makeig (2009). “Tonic Changes in EEG Power Spectra during Simulated Driving”, in Foundations of Augmented Cognition. Neuroergonomics and Operational Neuroscience, Berlin, Heidelberg.
21. R. Feng, G. Zhang, and B. Cheng (2009). “An on-board system for detecting driver drowsiness based on multi-sensor data fusion using Dempster-Shafer theory”, International Conference on Networking, Sensing and Control.



INTERNATIONAL  
STANDARD  
SERIAL  
NUMBER  
INDIA



# INTERNATIONAL JOURNAL OF INNOVATIVE RESEARCH

IN SCIENCE | ENGINEERING | TECHNOLOGY

 9940 572 462  6381 907 438  [ijirset@gmail.com](mailto:ijirset@gmail.com)



[www.ijirset.com](http://www.ijirset.com)

Scan to save the contact details