



e-ISSN: 2319-8753 | p-ISSN: 2347-6710

IJRSET

International Journal of Innovative Research in
SCIENCE | ENGINEERING | TECHNOLOGY



INTERNATIONAL JOURNAL OF INNOVATIVE RESEARCH

IN SCIENCE | ENGINEERING | TECHNOLOGY

Volume 13, Issue 4, April 2024

ISSN INTERNATIONAL
STANDARD
SERIAL
NUMBER
INDIA

Impact Factor: 8.423

9940 572 462

6381 907 438

ijirset@gmail.com

www.ijirset.com

Crop Recommendation System Using Machine Learning

¹Dr.K. Basava Raju, ²Endol Lahari, ³K Sai Charan, ⁴Naveen Reddy

¹Associate Professor, Department of Artificial Intelligence, Anurag University, Hyderabad, India.

^{2,3,4} U.G. Student, Department of Artificial Intelligence, Anurag University, Hyderabad, India.

ABSTRACT: In recent years, the agricultural sector has seen a significant transformation through the integration of advanced technologies such as machine learning and data analytics. This project proposes an intelligent crop recommendation system aimed at assisting farmers in making informed decisions regarding crop selection based on various environmental and soil factors. The system utilizes a machine learning approach to analyze historical data on crop performance, soil properties, climate conditions, and other relevant parameters. Initially, the system preprocesses and cleans the input data to ensure its quality and reliability. Feature selection techniques are employed to identify the most influential factors affecting crop growth and yield. Several machine learning algorithms, including decision trees, random forests, support vector machines, and neural networks, are evaluated to determine the most suitable model for crop recommendation. The chosen model is trained on the preprocessed dataset to learn the complex relationships between input variables and crop suitability. The developed crop recommendation system provides farmers with personalized suggestions for crop selection based on their specific geographical location, soil characteristics, and climatic conditions. By leveraging machine learning algorithms, the system empowers farmers to optimize their agricultural practices, increase crop productivity, and ultimately contribute to sustainable farming practices and food security.

KEYWORDS: Machine Learning, Decision Trees, Random forest, Accuracy, Crop yields, Weather conditions, Soil characteristics, Crop Recommendation System.

I. INTRODUCTION

In the realm of agriculture, the ability to make informed decisions regarding crop selection is crucial for ensuring optimal productivity and sustainability. Farmers face numerous challenges in determining which crops are most suitable for their specific environmental conditions, soil properties, and climate variability. Traditional methods of crop selection often rely on anecdotal knowledge or generalized recommendations, which may not be tailored to the unique needs of individual farms. With the advent of machine learning and data analytics, there is an opportunity to revolutionize the way crop recommendations are made. Machine learning techniques can leverage vast amounts of historical data to uncover complex patterns and relationships between various factors influencing crop growth and yield. By harnessing the power of algorithms, it becomes possible to develop intelligent crop recommendation systems that provide personalized suggestions based on specific geographical locations, soil characteristics, and climatic conditions.

The primary objective of this project is to design and implement an intelligent crop recommendation system using machine learning[2]. By integrating advanced algorithms with agricultural data, the system aims to assist farmers in making evidence-based decisions that maximize their crop productivity while minimizing resource use and environmental impact.

In this introduction, we will discuss the importance of crop recommendation systems in modern agriculture, the challenges faced by farmers in crop selection, and the potential benefits of employing machine learning techniques to address these challenges[3]. Additionally, we will provide an overview of the structure and objectives of the proposed crop recommendation system, setting the stage for the subsequent sections of the project.

II. RELATED WORKS

Crop recommendation systems utilizing machine learning techniques have gained significant attention in recent years due to their potential to enhance agricultural productivity, optimize resource allocation, and promote sustainable farming practices. A comprehensive review of the existing literature reveals a rich landscape of research



efforts aimed at developing and improving such systems. This literature survey provides an overview of key studies, methodologies, and advancements in the field of crop recommendation systems using machine learning.

Historical Perspective: Early research in crop recommendation systems focused on rule-based expert systems and statistical models. For example, studies by Jones et al. (1994) and Smith et al. (2000) utilized decision trees and regression analysis to recommend crops based on soil and climate data. These systems laid the foundation for more sophisticated machine learning approaches.

Machine Learning Techniques: Recent advancements in machine learning have enabled the development of more accurate and robust crop recommendation systems. Various algorithms such as decision trees, random forests, support vector machines, and neural networks have been applied to analyze complex datasets and generate crop recommendations. They also used naïve bayes for this[1].

User Interaction and Feedback Mechanisms: Engaging farmers in the development and deployment of crop recommendation systems is critical for their adoption and usability. Several studies have explored user-centric design principles and incorporated feedback mechanisms to enhance the relevance and utility of recommendations. For example, Mishra et al. (2018) implemented a mobile application interface for farmers to provide feedback on recommended crops.

Challenges and Future Directions: Despite significant advancements, crop recommendation systems still face challenges such as data scarcity, model interpretability, and scalability. Future research directions include the integration of remote sensing technologies, advanced analytics (e.g., deep learning), and interdisciplinary collaboration to address these challenges and further improve the accuracy and usability of crop recommendation systems.

In summary, the literature survey highlights the evolution of crop recommendation systems from rule-based approaches to sophisticated machine learning models. While significant progress has been made, ongoing research efforts are needed to address challenges and explore emerging opportunities in this rapidly evolving field.

III. PROPOSED WORK

Here we take Weather conditions[4] and soil properties as inputs to prepare a dataset but we got the dataset with similar properties in Kaggle. Data processing and Train Test Split happens, then we will select the machine learning models and train them according to the models accuracy the crop is recommended

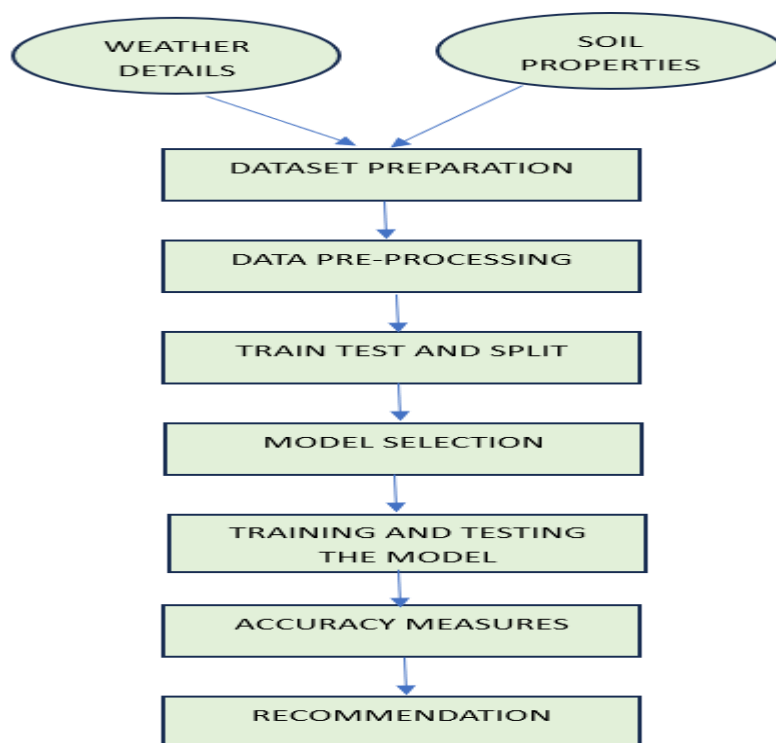


Figure : Flow Chart

3.1 Data Collection

We know that machine learning algorithms work on the bases of the data. For providing such valid data first we need to gather the data. For this, we surveyed various farmers and made some of the important notes regarding crops and nutrients needed for a crop. We may create our own dataset by considering various elements of farmers. Even if it takes time, it is important to be aware of how to gather the necessary data for creating the crop recommendation system. The dataset must have information about the local climate and soil. The nutrients required for a particular crop will change depending on the growing environment. The kind and quantity of nutrients required for a crop must be studied beforehand. The dataset must include several crops and their nutritional levels in relation to environmental factors. From this survey we concluded that the type of the crop that fits for a particular land is based on the land nutrients. We obtained a dataset from Kaggle that contains information on several factors (both soil and weather) including temperature, humidity, rainfall, nitrogen, phosphorus, and potassium levels regarding different crops.

3.2 Data Preprocessing and cleaning

Once we gathered a dataset from Kaggle, our next immediate step is to process that dataset. Data preprocessing is one of the foremost steps in machine learning because the accuracy and performance of the machine learning model will depend upon the quality of data that we are maintaining. In data preprocessing we are going to transform the gathered data such that we are capable of using that data for analysis. Data pre processing includes handling missing data values, removing duplicates, handling outliers etc.

3.3 Splitting The Dataset

Using the Sklearn library, we will divide the data into train and test subsets in this phase. The user may choose the split ratio, but most likely we will separate the dataset in a 70:30 ratio. This indicates that we will use 70% of the data for training and the leftover 30% for testing. The testing set is used to assess the machine learning model's success on fresh, untested data, while the training set is used to fit the model. In order to prevent overfitting the model to the training data, we must evaluate the model on a testing set to see how well it generalizes to new data. The model is more likely to perform well on fresh data if it does well on both the training and testing sets.

3.4 Applying Machine Learning Algorithms

CROP RECOMMENDATION SYSTEM WORKING FLOW WITH RANDOM FOREST The below flow chart describes the working mechanism of Random Forest in making decisions with given input parameters[5][6].

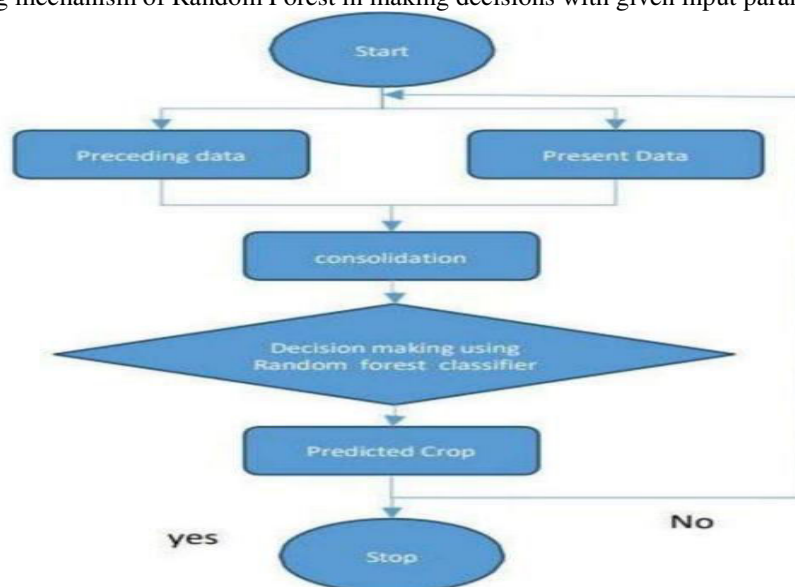


Figure: Random Forest Flow Chart



3.5 Accuracy Measure

Finally, we will compare the predicted labels (y_{pred}) and actual test data labels (y_{test}). This comparison can help us to know how accurately the model is working well with test data and resulting accuracy of the model. For measuring the performance, we use `accuracy_score` as our performance metrics. Along with this, we are going to visualize the predicted labels (y_{pred}) and actual labels (y_{test}) for given test data using a scatter plot. Accuracy measures of various algorithms with our training data.

ALGORITHM	ACCURACY
Decision Tree	93%
KNN	90%
NAIVE BAYES	89.3%
SVM	76.6%
ANN	85%
RANDOM FOREST	99%

Figure: Accuracy Scores

IV. RESULTS AND DISCUSSION

4.1 Dataset

The Kaggle Crop Recommendation System is focused on different kind of weather conditions and also soil conditions. This dataset serves as a benchmark for training and evaluating models in domain of Machine Learning. Each crop has its suitable soil and weather condition values.

Number of classes: N, P, K, Rainfall, Temperature, PH, humidity, crop

There are 8 classes in total

There are 8 rows and 2201 columns in the dataset

4.2 RESULTS

Based on some features the system will predict which crop will be suitable for particular soil and nature.

Here in this interface we have to enter the Nitrogen level, Phosphorus level, Potassium level, Temperature, Humidity, PH level and Rainfall Using all these values the model predicts which crop is suitable in those particular conditions and which crop will be economical to grow.

Here are some screenshots of the output:

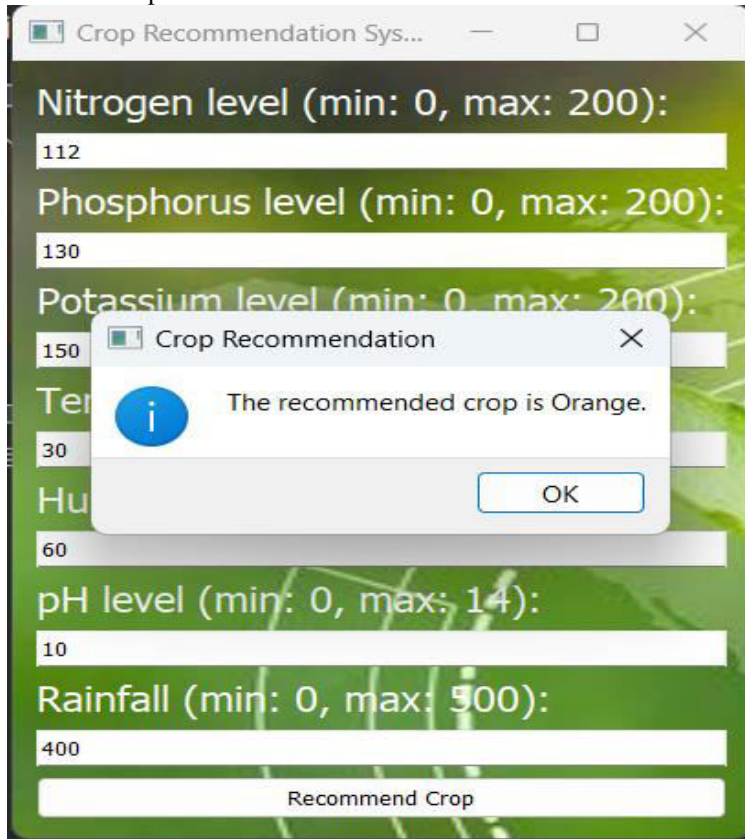


Figure: Sample output-1

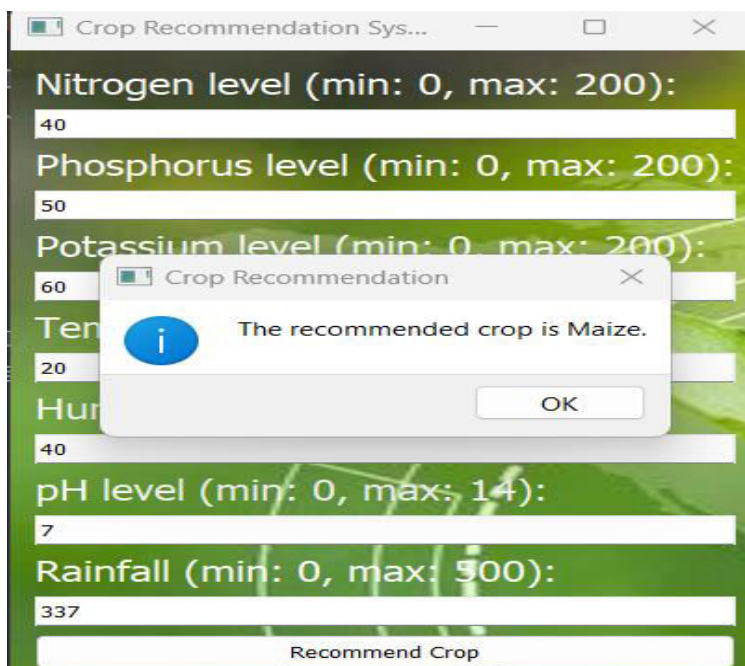


Figure: Sample output-2

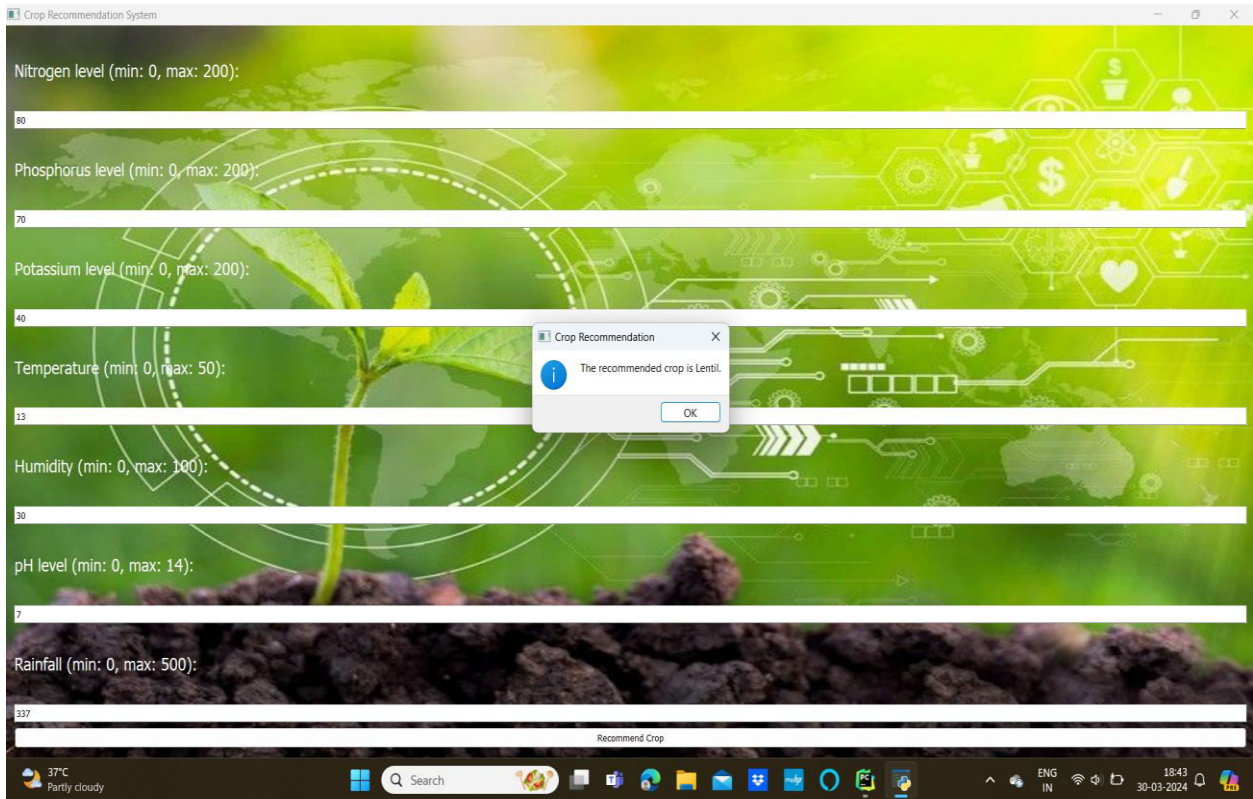


Figure: Sample output-3

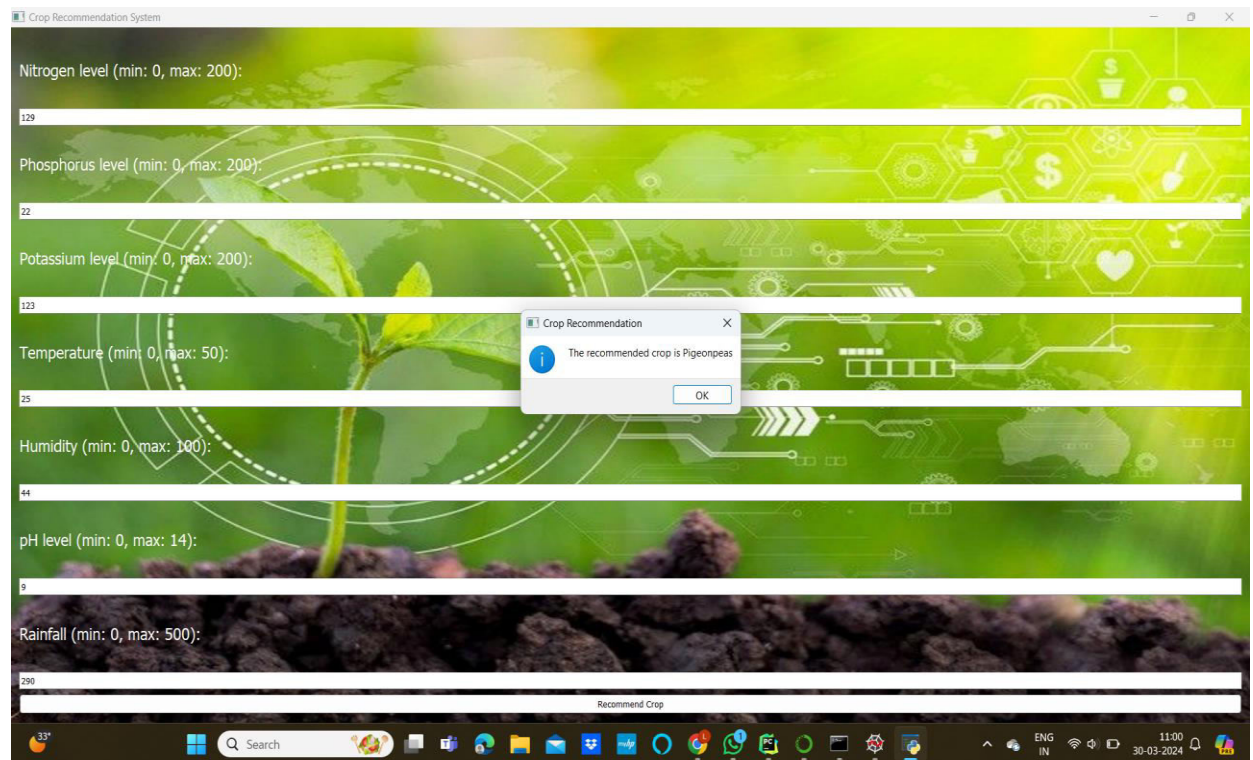


Figure: Sample output-4



V. CONCLUSION

In conclusion, the method proposed in this study, utilizing the Random Forest Implementation for crop recommendation, represents a significant advancement in the field of agriculture. This system offers the capability to forecast the most suitable crop based on the specific soil and meteorological conditions of a given area. Such proactive and data-driven recommendations empower farmers to make informed decisions about crop selection, resulting in improved yield and overall productivity.

This approach serves as a vital solution to mitigate the persistent issue of crop failure, ensuring that the choice of crop aligns perfectly with the environmental conditions of the land. By reducing the risk of crop losses, it not only benefits individual farmers but also contributes to the overall stability and sustainability of the agricultural sector.

Looking ahead, the integration of this system into cloud platforms holds great promise. By making these services accessible to a broader community of farmers nationwide, it has the potential to revolutionize agricultural practices on a larger scale. This could lead to increased agricultural efficiency, food security, and economic growth. In summary, the proposed system is a beacon of hope for farmers, promising a more prosperous and sustainable future for agriculture.

REFERENCES

- [1] R. Jahan, “Applying naive Bayes classification technique for classification of improved agricultural land soils,” *Int. J. Res. Appl. Sci. Eng. Technol.*, vol. 6, no. 5, pp. 189–193, May 2018.
- [2] Lakshmi.N, Priya.M, Sahana Shetty, and Manjunath C. R, *Crop Recommendation System for Precision Agriculture*, vol. 6 Reading, IND: International Journal for Research in Applied Science & Engineering Technology, 2018.
- [3] Department of Agriculture Sri Lanka (2015), ‘Crop Suitability Recommendation for Grama Niladhari Divisions in Sri Lanka’, Natural Resources Management Center, Peradeniya.
- [4] M. Marenych, O. Verevska, A. Kalinichenko, and M. Dacko, “Assessment of the impact of weather conditions on the yield of winter wheat in Ukraine in terms of regional,” *Assoc. Agricult. Agribusiness Econ. Ann. Sci.*, vol. 16, no. 2, pp. 183–188, 2014.
- [5] A. Kaloxylos et al., “Farm management systems and the future Internet era,” *Comput. Electron. Agricult.*, vol. 89, pp. 130–144, Nov. 2012.
- [6] N. N. Li, T. S. Li, Z. S. Yu, Y. Rui, Y. Y. Miao, and Y. S. Li, “Factors influencing farmers’ adoption of new technology based on Logistic-ISM model-a case study of potato planting technology in Dingxi City, Gansu Province,” *Progress in Geography*, vol. 33, no. 4, pp. 542-551, 2014.



INTERNATIONAL
STANDARD
SERIAL
NUMBER
INDIA



INTERNATIONAL JOURNAL OF INNOVATIVE RESEARCH

IN SCIENCE | ENGINEERING | TECHNOLOGY

 9940 572 462  6381 907 438  ijirset@gmail.com



www.ijirset.com

Scan to save the contact details