



e-ISSN: 2319-8753 | p-ISSN: 2347-6710

IJRSET

International Journal of Innovative Research in
SCIENCE | ENGINEERING | TECHNOLOGY



INTERNATIONAL JOURNAL OF INNOVATIVE RESEARCH

IN SCIENCE | ENGINEERING | TECHNOLOGY

Volume 13, Issue 4, April 2024

ISSN INTERNATIONAL
STANDARD
SERIAL
NUMBER
INDIA

Impact Factor: 8.423

9940 572 462

6381 907 438

ijrset@gmail.com

www.ijrset.com

Study of Robot Learning and Adaptability: Towards Autonomous Systems

Kedar N. Charde, Purvesh P. Nimbhorkar, Jeet R. kalbande, Mayur R. Jalamkar, Harshal Patil

U.G. Student, Department of Mechanical Engineering, PRMIT&R, Badnera, Amravati, Maharashtra, India

U.G. Student, Department of Mechanical Engineering, PRMIT&R, Badnera, Amravati, Maharashtra, India

U.G. Student, Department of Mechanical Engineering, PRMIT&R, Badnera, Amravati, Maharashtra, India

U.G. Student, Department of Mechanical Engineering, PRMIT&R, Badnera, Amravati, Maharashtra, India

Assistant Professor, Department of Mechanical Engineering, PRMIT&R, Badnera, Amravati, Maharashtra, India

ABSTRACT: Robot learning and adaptability are pivotal components in the development of autonomous systems. As robots become increasingly integrated into various aspects of society, their ability to learn from experience and adapt to changing environments becomes essential. This research paper explores the concepts of robot learning and adaptability, discussing various approaches, challenges, and potential applications. Through an examination of current research and advancements in the field, this paper aims to provide insights into the future of autonomous systems and the role of learning and adaptability in their development.

KEYWORDS: Robot, Adaptability, Machine learning, Autonomous System

I. INTRODUCTION

Robot Learning refers to the ability of robots to acquire new skills and improve their performance through experience or data. Adaptability, on the other hand, signifies a robot's capacity to adjust its behaviour and strategies in response to changing environments or unexpected situations. Combining these capabilities paves the way for truly intelligent machines capable of operating autonomously in complex setting.

Robots have transitioned from the realm of science fiction to ubiquitous tools across various sectors. From industrial assembly lines to surgical suites, their impact continues to grow. However, traditional robots rely on pre-programmed instructions, limiting their effectiveness in dynamic environments. Unforeseen circumstances or changes in the environment can disrupt their operations. This is where Robot Learning and Adaptability come into play.[1]

A robot that can not only perform repetitive tasks but also improve its skills and adjust to new situations. This is the power of robot learning and adaptability, two key features revolutionizing the field of robotics.

The evolution of robot learning techniques has enabled robots to become more autonomous, adaptive, and capable of handling a wide range of tasks in diverse environments. Ongoing research and advancements continue to push the boundaries of what robots can learn and achieve.

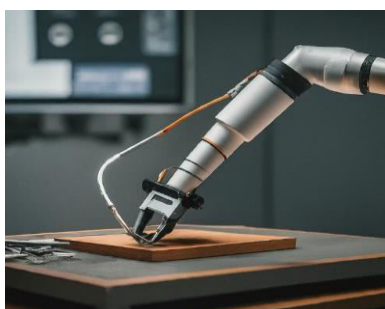


Figure 1: ROBOTIC ARM

II. APPROACHES TO ROBOT LEARNING

Machine learning (ML) plays a pivotal role in robot learning. By leveraging various ML algorithms, robots can analyse data, identify patterns, and make predictions, ultimately improving their performance over time. Reference (1)

Supervised learning is a type of machine learning where the algorithm learns from labeled data. Labeled data refers to input-output pairs, where each input is associated with a corresponding output or label. The goal of supervised learning is to learn a mapping or relationship between inputs and outputs based on the provided labeled data.



Figure 2: Robot learning

Unsupervised learning is a type of machine learning where the algorithm learns patterns and structures from unlabeled data. Unlike supervised learning, there are no predefined labels or output variables provided. The goal of unsupervised learning is to discover hidden patterns, clusters, or relationships within the data.

Reinforcement learning (RL) is a type of machine learning where an agent learns to make decisions by interacting with an environment. The agent receives feedback in the form of rewards or penalties based on its actions, and the goal is to learn an optimal policy that maximizes cumulative rewards over time.

III. CHALLENGES IN ROBOT LEARNING AND ADAPTABILITY

Data Scarcity: Training ML algorithms often requires vast amounts of data. Gathering and labeling such data can be time-consuming and expensive. Techniques for efficient data collection and transfer learning (leveraging knowledge from one task to another) are crucial for overcoming this hurdle.

Safety Concerns: As robots learn and adapt, it's imperative to ensure their safety and the safety of those around them. Robust safety mechanisms and fail-safe protocols need to be implemented to prevent accidents during the learning process.[2]

Interpretability: Understanding how robots make decisions based on learned models can be challenging. This lack of transparency can hinder trust and acceptance of these systems. Research on explainable AI (XAI) is crucial for addressing this issue.



Figure 3: Research on explainable AI

IV. ACHIEVING ADAPTABILITY IN ROBOTS

Robot adaptability goes beyond just learning. It encompasses the ability to sense, perceive, and react to changing environments. Here are some key aspects that contribute to adaptability. Reference (2)

Advanced Sensors: Robots rely on various sensors like cameras, LiDAR, and force sensors to gather information about their surroundings. Higher-fidelity sensors with improved perception capabilities are vital for robots to adapt to dynamic environments.

Perception Algorithms: Robots need sophisticated algorithms to interpret sensory data and construct an accurate understanding of their environment. Advances in computer vision, object recognition, and scene understanding are crucial for robots to adapt their actions based on real-time perception.



Figure 4 : Human Robot Model

V. DECISION-MAKING ALGORITHMS:

Robots require robust algorithms to make informed decisions based on their learned models and real-time perception. Planning, reasoning, and control algorithms enable robots to adapt their strategies and react appropriately to unforeseen situations.

VI. TECHNIQUES FOR ENHANCING ADAPTABILITY

Meta-learning, also known as learning to learn, focuses on teaching models to quickly adapt and learn new tasks or domains with minimal data or experience. Meta-learning algorithms aim to acquire meta-knowledge about different learning tasks and strategies, enabling rapid adaptation and generalization. [3]

Self-supervised learning is a type of learning where a model learns from the data itself without requiring external labels or annotations. Instead of relying on labeled data, self-supervised learning leverages the inherent structure or relationships within the data to create learning tasks. The model is trained to predict certain parts of the input data based on other parts, effectively creating its own labels.



Figure 5: Data prediction through Meta Learning



Ensemble learning is a machine learning technique that involves combining multiple models, called base learners or weak learners, to improve predictive performance and robustness. (Reference 3) The idea behind ensemble learning is that aggregating predictions from diverse models can lead to better overall predictions than any individual model alone.

Curriculum learning is a training strategy in machine learning where the learning process is organized based on a curriculum or sequence of tasks. The idea behind curriculum learning is to gradually increase the complexity or difficulty of the learning tasks over time, starting from simpler tasks and progressing to more challenging ones.

Applications of Robot Learning and Adaptability

Autonomous vehicles, also known as self-driving vehicles or driverless cars, are vehicles equipped with advanced sensors, cameras, radar, lidar, and AI systems that enable them to navigate and make decisions in dynamic environments without human intervention.

Industrial robotics involves the use of robotic systems in manufacturing and industrial settings to automate tasks, improve productivity, and enhance flexibility and adaptability in production processes.

Case Studies and Experiments

Deep reinforcement learning (DRL) has shown remarkable success in training robotic systems for complex manipulation tasks. In DRL, the robot learns through trial and error by interacting with its environment and receiving rewards or penalties based on its actions.[4]

Autonomous drones, also known as unmanned aerial vehicles (UAVs), rely on adaptive control strategies to navigate dynamically changing environments, avoid obstacles, and achieve mission objectives.

Real-world deployment of learning-enabled robotic systems involves translating research advancements in AI, machine learning, and robotics into practical applications and operational environments.

VII. FUTURE DIRECTIONS AND CONCLUSIONS

Robot learning and adaptability are rapidly evolving fields driven by advancements in artificial intelligence, machine learning, and robotics. Emerging trends in robot learning and adaptability include.

Continual Learning: Continual learning techniques enable robots to continuously acquire new knowledge and skills over time without forgetting previously learned information. This allows robots to adapt to evolving environments and tasks.[5]

Transfer Learning: Transfer learning techniques enable robots to leverage knowledge and experiences from one task or domain to improve performance in related tasks or new environments. This facilitates faster learning and adaptation. Reference [6,7]

Meta-Learning: Meta-learning focuses on teaching robots how to learn efficiently and generalize from few examples. Meta-learning algorithms enable robots to quickly adapt to new tasks, environments, and challenges.

Regulatory Frameworks: Governments, policymakers, and industry stakeholders need to develop robust regulatory frameworks, standards, and guidelines for AI-enabled robotic technologies to ensure compliance, safety, and ethical use.

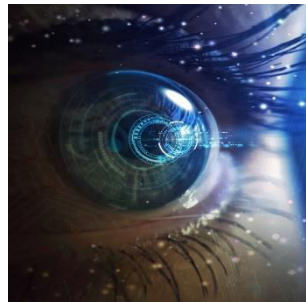


Figure 6: Symbol of Future Prediction

Human Rights and Dignity: AI and robotics should respect human rights, dignity, autonomy, and consent. Ethical considerations include preventing harm, preserving human agency, and promoting well-being in human-robot interactions.

This research paper provides a comprehensive overview of robot learning and adaptability, examining various approaches, challenges, and applications. It also highlights the importance of ongoing research and future directions in this rapidly evolving field.

REFERENCES

1. Sutton, R. S., & Barto, A. G. (2018). Reinforcement learning: An introduction. MIT press.
2. Levine, S., Finn, C., Darrell, T., & Abbeel, P. (2016). End-to-end training of deep visuomotor policies. *Journal of Machine Learning Research*, 17(39), 1-40.
3. Kober, J., Bagnell, J. A., & Peters, J. (2013). Reinforcement learning in robotics: A survey. *The International Journal of Robotics Research*, 32(11), 1238-1274.
4. OpenAI. (2020). Dactyl: A dexterous robotic hand.
5. Pinto, L., Davidson, J., & Gupta, A. (2016). Supersizing self-supervision: Learning to grasp from 50k tries and 700 robot hours. In *Proceedings of Robotics: Science and Systems*.
6. Lillicrap, T. P., Hunt, J. J., Pritzel, A., Heess, N., Erez, T., Tassa, Y., ... & Wierstra, D. (2016). Continuous control with deep reinforcement learning. *arXiv preprint arXiv:1509.02971*.
7. Amodei, D., Olah, C., Steinhardt, J., Christiano, P., Schulman, J., & Mané, D. (2016). Concrete problems in AI safety. *arXiv preprint arXiv:1606.06565*.



INTERNATIONAL
STANDARD
SERIAL
NUMBER
INDIA



INTERNATIONAL JOURNAL OF INNOVATIVE RESEARCH

IN SCIENCE | ENGINEERING | TECHNOLOGY

 9940 572 462  6381 907 438  ijirset@gmail.com



www.ijirset.com

Scan to save the contact details