



e-ISSN: 2319-8753 | p-ISSN: 2347-6710

IJRSET

International Journal of Innovative Research in
SCIENCE | ENGINEERING | TECHNOLOGY



INTERNATIONAL JOURNAL OF INNOVATIVE RESEARCH


IN SCIENCE | ENGINEERING | TECHNOLOGY

Volume 13, Issue 4, April 2024

ISSN INTERNATIONAL
STANDARD
SERIAL
NUMBER
INDIA

Impact Factor: 8.423

 9940 572 462

 6381 907 438

 ijirset@gmail.com

 www.ijirset.com



Smart Logistics Management System

Shreyas Sanjay Vibhute, Gaurav Ganesh Wakhare, Adesh Goraksha Kalamkar, Rohan Ashok Chitte,

Prof. Sushma Shinde

Department of Computer Engineering, Siddhant College of Engineering, Pune, India

ABSTRACT: The significance of logistics services has been stressed in today’s fast-paced world since they serve as a link between companies and customers. The expectation of receiving goods and deliveries the same day or within a few days has now become the global standard for the majority of nations. The demand for such delivery services has been significantly altered by the expansion of online selling, E-commerce, and consumer online shopping behaviors. In the today's world, logistics and courier services have expanded along with online shopping, and the ability to buy and sell goods online has increased the demand for these services. A web-based platform called an online logistics management software optimizes all activities associated to the courier and goods delivery industry. It manages the entire procedure, beginning with the booking of the package and ending with its collection and delivery. The process is transparent because all the parcel information and the current status are displayed on a single screen.

KEYWORDS: Logistics, goods delivery system, web application, Shortest Path.

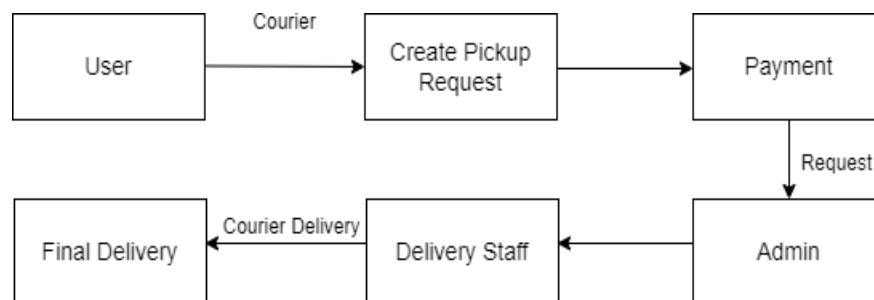
I. INTRODUCTION

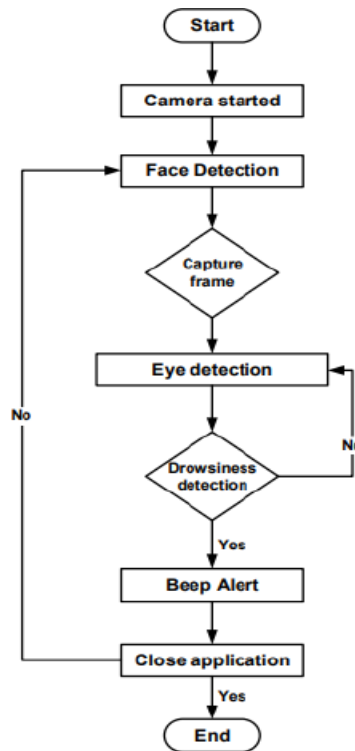
The organizations that help transport parcels are known as courier services. A crucial factor that distinguishes a logistics management service from the more regular and substantial delivery services in this type of service is delivery speed and efficiency. Accurate package pick-up path prediction is required for the logistics sector, which is expanding quickly. The pick-up route prediction challenge seeks to anticipate the parcel's choice of pick-up orders for these unpicked-up packages given the goods unpicked-up packages at time t . A dispatch system's ability to send parcels to couriers more intelligently can be improved by accurate route prediction. It is preferable to allocate the box to the courier. The pick-up route prediction can be thought of as a combinatorial optimization problem with spatial and timing restrictions. Optimization-based methods primarily concentrate on identifying routes with the lowest predetermined cost making them unable to consider multiple limitations. The project's goal is to produce an effective logistics management system, one whose primary functionality—aside from figuring out the courier bill—includes estimating the amount of time needed to get somewhere. Our primary goal should be managing shipments effectively, as requested by our client. The proposed system automates every high-tech process and solves every issue with the current system. It should maintain a record of customer booking and delivery information, among other things, and can be effective with little effort. the precision with which the bill for each shipment was calculated. the precision with which one can estimate the travel time. User interface simplicity and user-friendliness.

II. PROPOSEDSYSTEM

- Most of the existing Courier Management Systems are not provide facilities for delivery agent/boy to deliver the courier in shortest and minimum time in our delivery system we provide lots of facilities for user who give the order as well as for delivery agent/boy to deliver the courier in optimal path and minimum time.
- In normal courier management system delivery agent takes lots of efforts to deliver the courier, in our delivery system user as well as delivery agent/boy take minimum efforts for deliver the product.

III. BLOCKDIAGRAM





IV. RESULTS AND DISSCUSSION

When user launches the application in his/her Desktop, the very first screen which lands is the Home Page. Where he/she see different sections and start button.

V.CONCLUSION

The “**Online Logistics Management System**” project was created under the guidance of and with the assistance of courier services. After the system underwent testing, it was determined that its performance was satisfactory. All required output was produced. The system was discovered to be user-friendly and to include customer assistance messages. The system’s menu-driven architecture offers consumers a user-friendly environment. The system was successfully put into use. The system was seen as being more secure and required less staff and working hours to run. As a result, the Project was successfully finished.

REFERENCES

1. Reginald Lance E. Dones, Michael N. Young ,“Demand on the of Courier Services during COVID-19 Pandemic in the Philippines”, © IEEE 2020.
2. Haitao Wen, Qing Yun, Dan Liu*, Xuemei Fan, WenyuSu,“The Impact of Personality Traits, Group Identification on Courier Turnover Intention: Social Support as a Moderator”, 978-1-7281-4306-4/20/\$31.00 ©2020 IEEE.
3. Haomin Wen, Youfang Lin1, Fan Wu, HuaiyuWan ,“Package Pick-up Route Prediction via Modeling Couriers’ Spatial-Temporal Behaviors”, 978-1-7281-9184-3/21/\$31.00 ©2021 IEEE.
4. Yaoting Huang1 and Wenlian Lu2,“Online Parallel Optimization Approach to Courier Routing Problems”,IEEE, 2021.
5. Sharfuddin Ahmed Khan1, Waqar Ahmed2 and Alaa Ubaid3,“A Decision Support System for Logistics Performance Evaluation of Courier Company”, 978-1-7281-6425-0/20/\$31.00 ©2020 IEEE.
6. SijieRuan, Cheng Long, Xiaodu Yang, Tianfu He, Ruiyuan Li, JieBao, “Discovering Actual Delivery Locations from Mis-Annotated Couriers’ Trajectories”.
7. SijieRuan, Xi Fu, Cheng Long, Member, IEEE, ZiXiong, JieBao, Ruiyuan Li, Yiheng Chen, Shengnan Wu, and Yu Zheng, “Filling Delivery Time Automatically Based on Couriers’ Trajectories”, IEEE, AUGUST 2015.



INTERNATIONAL
STANDARD
SERIAL
NUMBER
INDIA



INTERNATIONAL JOURNAL OF INNOVATIVE RESEARCH

IN SCIENCE | ENGINEERING | TECHNOLOGY

 9940 572 462  6381 907 438  ijirset@gmail.com



www.ijirset.com

Scan to save the contact details