



e-ISSN: 2319-8753 | p-ISSN: 2347-6710

# IJRSET

International Journal of Innovative Research in  
**SCIENCE | ENGINEERING | TECHNOLOGY**



# INTERNATIONAL JOURNAL OF INNOVATIVE RESEARCH

IN SCIENCE | ENGINEERING | TECHNOLOGY

Volume 13, Issue 8, August 2024

**ISSN** INTERNATIONAL  
STANDARD  
SERIAL  
NUMBER  
INDIA

Impact Factor: 8.524

9940 572 462

6381 907 438

[ijirset@gmail.com](mailto:ijirset@gmail.com)

[www.ijirset.com](http://www.ijirset.com)

# Exploratory Analysis of Geolocational Data

Dr. Rajesh K S<sup>1</sup>, Deepa K R<sup>2</sup>, Sanjana K<sup>3</sup>, Saishivani Paladugu<sup>4</sup>, Vaishnavi M D<sup>5</sup>

Professor, Department of AI & ML, Rajarajeshwari College of Engineering, Bangalore, Karnataka, India<sup>1</sup>

Assistant Professor, Department of AI & ML, Rajarajeshwari College of Engineering, Bangalore, Karnataka, India<sup>2</sup>

U.G. Student, Department of AI & ML, Rajarajeshwari College of Engineering, Bangalore, Karnataka, India<sup>3,4,5</sup>

**ABSTRACT:** An essential step in examining and interpreting geographical patterns, correlations, and trends within particular geographic places is the exploratory study of geolocational data. The goals, approach, and most important conclusions of the project are succinctly summarized in this abstract. This project's main goal is to use exploratory analysis to extract useful knowledge and insights from geolocational datasets. The methodology entails gathering geolocation data from several sources, ensuring the quality of the data through preprocessing, and using a range of analytical tools, including data visualization, descriptive statistics, spatial analysis, and temporal analysis. Within the geolocational data, the results of the exploratory analysis can show spatial clusters, patterns of density and distribution, movement patterns, proximity correlations, and temporal trends. These discoveries are applicable to a number of fields, including environmental studies, marketing, transportation, and urban planning. Recommendations to optimize urban planning plans, increase transportation systems, better marketing campaigns, and comprehend the influence of human activities on the environment can be made based on the findings. Where spatial context is important, exploratory analysis of geolocational data lays the groundwork for more in-depth research and well-informed decision-making. It helps planners, researchers, and organizations make data-driven decisions and comprehend the dynamics of physical places more fully.

**KEYWORDS:** Machine Learning, Algorithm, GPS

## I. INTRODUCTION

In today's data-driven world, geolocational data—which includes information linked to particular physical locations—has grown in popularity and value. Due to the increasing use of GPS devices, mobile apps, and internet platforms, a large amount of geolocation data is produced every day. This data offers a spatial context that helps with informed decision-making across a wide range of disciplines and enables a greater knowledge of a variety of occurrences. Exploratory analysis approaches have become more important for the exploration and analysis of geolocational data. By analysing data patterns, correlations, and trends without prior assumptions, exploratory analysis helps researchers come up with new ideas and develop hypotheses for more research. Through summary measures of the geolocation data provided by descriptive statistics, researchers may comprehend the distribution, dispersion, and central tendency of the spatial features. Spatial patterns and correlations can be seen using data visualization techniques like maps, scatter plots, and heat maps, which give a visual depiction of the geographic context of the data. Data's spatial dependencies, hotspots, and clusters can be found using spatial analysis techniques like proximity analysis and spatial clustering. To have a thorough grasp of the dynamics of the data, temporal analysis examines seasonality, patterns, and trends in the geolocational data across time.

The results of an exploratory analysis can provide important new information. Areas of considerable activity, concentration, or significance can be highlighted by spatial clusters. Patterns of density and dispersion can reveal details about the positioning of infrastructure, the distribution of the people, and the dissemination of points of interest. Transportation system optimization can be aided by movement patterns, which might reveal popular routes, traffic patterns, or transportation patterns. Finding the connections and separations between various points of interest or geographical features can be facilitated by proximity analysis. Making better decisions can be facilitated by using temporal trends to reveal seasonal fluctuations, patterns, or trends over time. Exploratory geolocation data analysis is a potent tool for identifying spatial trends, correlations, and patterns. It offers a framework for comprehending geographical phenomena and encourages evidence-based decision-making in a variety of domains. Through the utilisation of exploratory analytical results, stakeholders can effectively allocate resources, boost marketing campaigns, improve urban planning initiatives, and obtain a thorough understanding of the environmental impact of human activities.

This system could enhance and return a good looking photograph using a technique called image inpainting. Image inpainting modify and fill the missing area in an image in an undetectable way, by an observer not familiar with the original image. The technique can be used to reconstruct image damage due to dirt, scratches, overlaid text etc.

Some images contain mixed text-picture-graphic regions in which text characters are printed in an image. Detecting and recognizing these characters can be very important, and removing these is important in the context of removing indirect advertisements, and for aesthetic reasons. There are many applications of image inpainting ranging from restoration of photographs, films, removal of occlusions such as text, subtitle, logos, stamps, scratches, red eye removal etc.

## II. RELATED WORK

A review of the literature on the exploratory analysis of geolocation data demonstrates the abundance of studies and research in this area. Here are a few important conclusions and noteworthy works: Luc Anselin's "Exploratory Spatial Data Analysis" (1996): An extensive introduction of exploratory spatial data analysis (ESDA) methods, including those that apply to geolocational data, is given in this groundbreaking work. It addresses the use of spatial regression analysis, hotspots, clustering, and autocorrelation, among other techniques, in comprehending geographical relationships and patterns [1]. Robert Haining's "Spatial Data Analysis: Theory and Practice" (2003): The theory and applications of spatial data analysis are presented in this book. It discusses approaches for exploratory spatial data analysis and how they are used in different fields. It highlights the value of statistical techniques and spatial visualization by providing examples and case studies on the analysis of geolocational data [2]. Daniel A. Griffith's "Geographical Data Analysis" (2015): An extensive introduction to exploratory spatial data analysis and its use in geography is given in this book. It covers a number of methods and how to use GIS software to perform them, including spatial clustering, spatial autocorrelation, and spatial regression analysis. The significance of spatial thinking is emphasized and examples of geolocational data processing are included in the book [3]. Peter Rogerson and Jaymie R. Meliker's "Exploratory Spatial Data Analysis in Environmental Epidemiology" was published in 2018: The use of exploratory spatial data analysis in environmental epidemiology is the main topic of this research article. In order to comprehend the spatial patterns of environmental exposures and their effects on health outcomes, it addresses methods for analyzing geolocation data. In order to detect spatial clusters and hotspots, the research emphasizes the value of statistical techniques and spatial visualization [4]. Xi Liu et al.'s "Exploratory Analysis of Geolocational Data for Urban Planning" (2019): The use of exploratory analysis techniques on geolocation data for urban planning is investigated in this work. The application of density estimates, spatial regression analysis, and spatial clustering to comprehend urban dynamics, spot trends in urban activity, and aid in urban planning decision-making are covered. For efficient analysis, the study highlights the use of GIS and statistical techniques [5]. Sudipta Sarangi and Jayendran Venkateswaran's "Exploratory Spatial Data Analysis: A Review of Methods and Applications" (2020): An overview of exploratory spatial data analysis techniques and their uses in a number of domains, including geolocation data analysis, is given in this review study. It covers the use of GIS and statistical software in the application of techniques like spatial autocorrelation, geographical clustering, and spatial regression. The significance of exploratory analysis in comprehending spatial patterns and interactions is emphasized in the work [6].

## III. METHODOLOGY

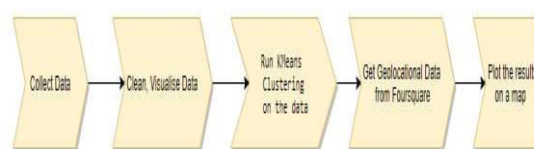


Figure 1. Project Flow Chart

Gaining knowledge and extracting useful information from spatial datasets is the aim of the exploratory study of geolocational data. The purpose of the analysis is to comprehend the dynamics and features of the data by examining patterns, correlations, and trends within particular geographic areas. The following are the project's main goals: Recognize the geolocation dataset's organization and content: Gaining a thorough grasp of the dataset's characteristics, spatial components, and any further contextual data that may be available is the initial goal. Examine spatial linkages

and patterns: The goal of using exploratory analysis techniques is to find anomalies, clusters, or patterns in the geolocation data. This entails looking at the points of interest, landmarks, and other pertinent spatial features' distribution, density, and spatial dependencies. Determine trends and temporal variations: The objective of the study is to determine seasonality, trends, and temporal patterns in the geolocation data. This entails examining the temporal changes and trends of spatial features and determining how they evolve over time. Extrapolate useful insights: The goal is to use the geolocation data to derive insightful and useful information. Decision-making, resource allocation, marketing efforts, urban planning techniques, and environmental research can all benefit from these insights. Create visualizations to aid in communication: Maps, charts, and graphs that visually display the geolocation data are crucial for effectively conveying the results. Making visuals that help communicate the spatial patterns, correlations, and trends found during the exploratory research is the goal. By accomplishing these goals, researchers, planners, and organizations can better understand the spatial characteristics, make well-informed decisions, and spot areas for optimization and improvement across a range of industries, including environmental studies, urban planning, transportation, and marketing. This is made possible through the exploratory analysis of geolocational data.

Data collection: Gathering the geolocation information that will be examined is the initial stage. This could entail compiling information from multiple sources, like satellite photos, geo-tagged social media posts, and GPS trackers. Data pre-processing: Pre-processing the data is necessary to eliminate errors and inconsistencies after it has been gathered. The data may need to be cleaned, filtered, transformed, and formatted appropriately for analysis in this step. Data visualization: Making geolocation data visualizations is the next stage. Maps, scatter plots, heat maps, and other charts and graphs that can be used to find spatial patterns and trends may be examples of this. Spatial analysis: Utilizing spatial analysis tools, one can investigate patterns and correlations within the data once it has been visually

represented. Methods like geographic autocorrelation, spatial clustering, and spatial regression analysis might be used for this. Interpretation of results: Interpreting the findings and deriving significant conclusions from the data is crucial after the analysis is finished. Finding high- or low-activity zones, trends, and patterns, as well as possible reasons or explanations for the observed spatial correlations, may all be part of this process. Communication of results: Ultimately, it is imperative to effectively and concisely convey the analysis's findings to decision-makers and interested parties. This could entail producing reports, presentations, or other kinds of visual aids that clearly convey the analysis's conclusions. In order to pre-process, analyze, visualize, and interpret geolocational data, a variety of tools and technologies are used in the exploratory analysis process. In this context, some frequently utilized tools and technologies are as follows:

- ArcGIS: a feature-rich commercial GIS program with significant capabilities for data visualization, mapping, and geospatial analysis.
- QGIS: An open-source GIS software that provides a wide range of tools for geospatial data processing, analysis, and mapping.
- Python: A versatile programming language with numerous geospatial libraries, including Geo-Pandas, Shapely, Fiona, PySAL, and Folium.
- R: A statistical programming language with packages such as sf, sp, rgdal, rgeos and leaflet for geospatial analysis and visualization.
- Tableau: A popular data visualization tool that supports mapping and geospatial visualizations with interactive dashboards.
- Power BI: Microsoft's business intelligence tool that enables the creation of interactive geospatial visualization sand reports.
- Matplotlib: A powerful plotting library in Python that provides functionality for creating static geospatial visualizations.
- Plotly: An interactive data visualization library in Python and R that supports geospatial visualizations with interactive features.
- Google Maps Geocoding API: A widely used geocoding service provided by Google for converting addresses into geographic coordinates.
- MapQuest Geocoding API: A geocoding service that offers batch geocoding, reverse geocoding, and other geospatial services.

Open Cage Geocoder: An open-source geocoding service that provides worldwide geocoding and reverse geocoding function

#### IV. EXPERIMENTAL RESULTS

Important insights into the spatial patterns, relationships, and trends within the dataset are offered by the findings of the exploratory analysis of the geolocational data. The following are some possible outcomes of the analysis:

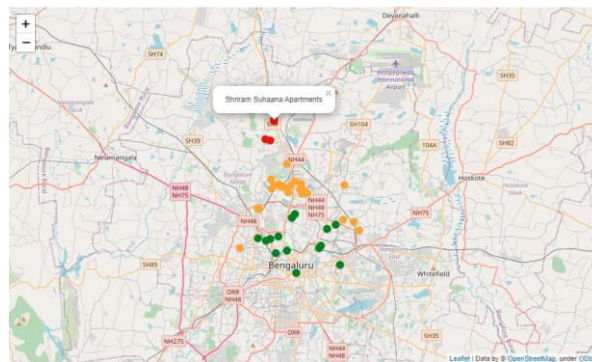
**Spatial Distribution:** The analysis shows how landmarks, points of interest, and other geolocational information are distributed spatially. It assists in locating hotspots or areas of interest by highlighting regions with high concentrations or clusters of particular attributes.

**Spatial Relationship:** The investigation reveals connections in space among several geolocational characteristics. It reveals patterns and possible relationships by determining the geographical interdependence, closeness, or connectivity between different points of interest.

**Temporal Trends:** The research looks at the geolocation data's temporal patterns and fluctuations. It detects seasonality, patterns of change across time, and any notable temporal variations in the spatial features.

**Anomalies and Outliers:** The geolocational data is analyzed to find anomalies or outliers, which may point to odd or unexpected geographical patterns or occurrences. These irregularities could prompt more research or point to a particular phenomenon.

**Correlations and Associations:** The study reveals relationships or correlations between other variables or qualities and geolocational features. It pinpoints geographical elements that could affect particular results or phenomena.



**Patterns of Movement:** The analysis shows trajectories, or the spatial courses that people or objects follow, if the geolocational data include tracking or movement information. It aids in comprehending behavior and patterns of movement.

**Visualization:** The analysis produces graphics that clearly convey the spatial patterns, connections, and trends found during the investigation. These graphics can be maps, charts, or graphs. Stakeholders can better comprehend and communicate the findings with the help of visual representations.

These findings offer a more thorough comprehension of the geolocational data, enabling stakeholders to decide wisely and streamline several procedures. For instance, corporations might focus marketing campaigns based on geographical patterns, urban planners can use the results to determine locations for infrastructure development, and environmental researchers can analyze spatial patterns of pollution or biodiversity. In a variety of fields, the findings of exploratory analysis form the basis for additional research and judgment

#### V. CONCLUSION

In conclusion, the process of exploring spatial information through the analysis of geolocational data is a useful method for identifying patterns, correlations, and trends. Analysts can get insights and extract useful information from geolocational data by utilizing tools and technologies such cloud computing platforms, GIS software, programming languages, data visualization tools, geocoding services, and spatial databases. Analysts can discover trends and

temporal fluctuations, investigate spatial patterns and correlations, comprehend the structure and content of the geolocational dataset, and derive useful insights through the exploratory analysis process. By using visualizations, researchers can more effectively communicate their findings to stakeholders, empowering them to comprehend the spatial aspects and make well-informed decisions. Analysts may now pre-process, analyze, visualize, and interpret geolocational data more correctly and effectively thanks to the availability of cutting-edge tools and technology. These technologies facilitate collaborative work flows, handle big datasets, carry out intricate spatial operations, and enable the integration of many data sources. There are numerous uses for the exploratory analysis of geolocational data in a variety of fields, such as environmental studies, marketing campaigns, urban planning, and transportation management. It offers useful data to support evidence-based tactics, enhance decision-making procedures, and optimize resource allocation. The exploratory study of geolocational data will be further enhanced by new tools and methodologies as technology develops, opening the door to more complex studies and profound insights. Analysts and researchers can continue to explore the possibilities of geolocation data and support sustainable growth and well-informed decision-making by utilizing these developments.

#### REFERENCES

1. "Exploratory Spatial Data Analysis" by Luc Anselin (1996).
2. "Spatial Data Analysis: Theory and Practice" by Robert Haining (2003).
3. "Geographical Data Analysis" by Daniel A. Griffith (2015).
4. "Exploratory Spatial Data Analysis in Environmental Epidemiology" by Peter Rogerson and Jaymie R. Meliker (2018).
5. "Exploratory Analysis of Geolocational Data for Urban Planning" by Xi Liu et al. (2019).
6. "Exploratory Spatial Data Analysis: A Review of Methods and Applications" by Sudipta Sarangi and Jayendran Venkateswaran (2020).



INTERNATIONAL  
STANDARD  
SERIAL  
NUMBER  
INDIA



# INTERNATIONAL JOURNAL OF INNOVATIVE RESEARCH

IN SCIENCE | ENGINEERING | TECHNOLOGY

 9940 572 462  6381 907 438  [ijirset@gmail.com](mailto:ijirset@gmail.com)



[www.ijirset.com](http://www.ijirset.com)

Scan to save the contact details