



e-ISSN: 2319-8753 | p-ISSN: 2347-6710

IJIRSET

International Journal of Innovative Research in
SCIENCE | ENGINEERING | TECHNOLOGY

INTERNATIONAL JOURNAL OF INNOVATIVE RESEARCH

IN SCIENCE | ENGINEERING | TECHNOLOGY

Volume 13, Issue 6, June 2024

ISSN INTERNATIONAL
STANDARD
SERIAL
NUMBER
INDIA

Impact Factor: 8.423



9940 572 462



6381 907 438



ijirset@gmail.com



www.ijirset.com

Enhancing Road Safety: Traffic Sign Detection and Recognition Using OpenCV

Bhargavi H N

PES Institute of Technology and Management, Shimoga, Karnataka, India

ABSTRACT: Using the YOLOv5 model in PyTorch, this script creates a Traffic sign recognition and classification in real-time system that supports variants such as `yolov5s`, `yolov5m`, `yolov5l`, and `yolov5x`. For flexible traffic sign identification, it supports both pretrained and custom weight settings, handling a range of input channels and object classes. Robust model initialization, automated pretrained weight management, and effective inference tuned for real-time performance are some of the salient characteristics. It processes photos quickly and accurately by utilizing PyTorch's capabilities, making it appropriate for quick and precise detection of traffic signs. Its usefulness in real-world situations is demonstrated by practical examples, which makes it an invaluable resource for traffic management system researchers and developers.

I. INTRODUCTION

The research uses traffic sign in real time identification and categorization utilizing the YOLOv5 algorithm to improve road safety and support autonomous driving systems. It interprets pictures or video streams to identify and categorize traffic signs, giving drivers the essential information they must make safe driving decisions. The system's versatility for many deployment circumstances is ensured by its ability to handle a range of input sources, such as webcam feeds and video files. With this technique, detection accuracy is good and quick inference moments, which are crucial for real-time applications, by utilizing the YOLOv5 model. This research intends to improve transportation systems with intelligence by improving the situational awareness of modern cars and reducing accidents caused by missing or misinterpreted traffic signs.

II. LITERATURE SURVEY

Employing hue, form, and movement information, Bahlmann et al. (2005) developed a framework for identifying, tracking, and detecting traffic signals. Their approach, which focused on real-time processing, integrated several cues to accurately recognize and monitor traffic indicators within dynamic contexts. It was demonstrated at the IEEE Symposium on Intelligent Vehicles [1].

Ishida et al. (2006) presented a learning approach for determining whether traffic signs [2] are worn out. Their method, which was presented at the ICPR conference, used cutting-edge pattern recognition techniques to increase recognition accuracy in difficult situations where signs are destroyed.

Using a color digital camera, Siegmann et al. (2008) looked at the retro reflectivity and luminance of vertical traffic signs. Their research yielded key [3] insights for maximizing sign visibility and detection under different lighting circumstances, and it was published in the Transactions on IEEE Instrumentation and Measurement.

At the IEEE Intelligent Vehicles Symposium, a real-time road sign recognition system developed by Broggi et al. (2007) was on display. Their method demonstrated a useful application in improving car navigation and safety [4] systems by effectively detecting and interpreting traffic signs using computer vision techniques.

The use of neural networks and evolutionary algorithms for traffic sign recognition was the subject of research presented by Aoyagi and Asakura (1996) at the IEEE IECON [5] conference. By aiming to develop dependable algorithms that can successfully recognize and classify traffic signs in images, their research exhibited advancements in pattern recognition techniques.

III. METHODOLOGY

The approach of the real-time traffic sign recognition and classification project is broken down into several important phases, such as deployment, data preparation, model training, assessment, and collection. Every step is required to ensure the traffic sign detection system's accuracy and efficacy.

1. **Data collection:** Initially, a large collection of photos of traffic signs needs to be gathered. photos from a variety of sources are included in this dataset, including live video feeds, public datasets (such the GTSRB and LISA Traffic Sign Dataset), and static photos taken in diverse settings. The dataset's diversity is essential for developing a robust and effective model in a range of real-world situations.

2. **Data preparation:** Data preparation is the next stage after gathering the dataset. Several tasks are included in this phase:

- **Annotation:** Adding class names and bounding boxes to the photos to indicate the various traffic signs.
- **Normalization:** Bringing the pixel values within a model-appropriate range, usually between 0 and 1.
- **Augmentation:** Increasing the diversity of the instructions data and enhancing the resilience of the model by utilizing different approaches including rotation, flipping, and color modifications.

3. **Model Training:** The YOLOv5 (You Only Look Once version 5) model is trained using the pre-processed data in this stage. The cutting-edge object identification algorithm YOLOv5 is renowned for its quickness and precision. The following steps are involved in the training process: -

- **Model Initialization:** Use pre-trained weights to initialize the YOLOv5 model to be able to maximize transfer learning.
- **Training Configuration:** Selecting the batch size, learning rate, and number of epochs, among other hyperparameters.
- **Training:** Involves iteratively updating the model weights, fine- the function of loss, and feeding the model with annotated pictures.

4. **Evaluation of the Model:** Using a different validation dataset, the model's performance is assessed following training. To evaluate the accuracy and effectiveness of the model, Calculations are made for important measures like as precision, recall, mean average precision (mAP), and inference time. This evaluation helps to uncover any overfitting or underfitting issues in the model and provides insights into its practicality.

5. **Deployment:** The final step involves using the trained model to identify and classify traffic signs in real-time. This deployment consists of:

- **Integration:** Putting the model in a real-time pipeline for processing images or streaming video inputs.
- **Optimization:** Prior to deploying the model on edge devices, ensure that it has low latency and good throughput.
- **Visualization:** Bounding boxes and confidence scores for identified traffic signs are shown on the video feed using visualization tools.

DFD view

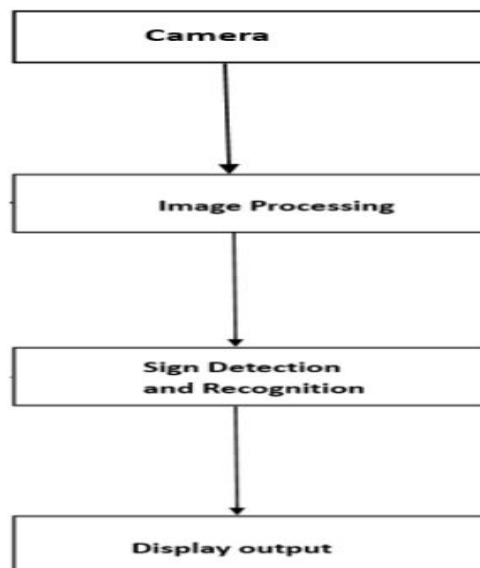


Fig: DFD view

IV. RESULTS AND DISCUSSION

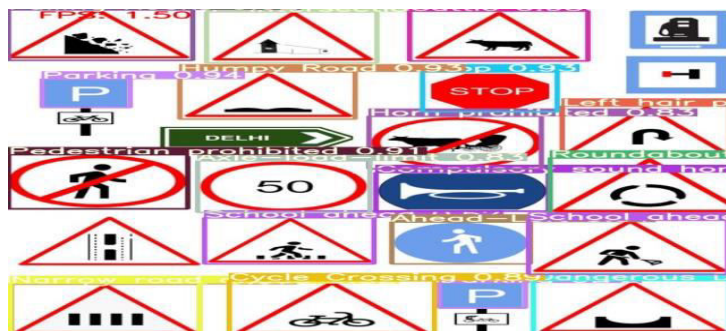


Fig 1: The actual implementation for the project



Fig 2: The output view



Fig 3: Signs view

V. FUTURE ENHANCEMENT

Future advancements for the real-time traffic sign identification and categorization system will include sophisticated methods for augmenting data during training to improve robustness in a variety of environmental circumstances. Accuracy will be improved across diverse geographic regions by combining region-specific traffic sign datasets with transfer learning. It is essential to put in place a feedback system to continuously improve detection accuracy by learning from classification failures. Usability will be improved by adding language support for traffic signs and voice warnings for recognized signs. Deploying the model in mobile systems and in-dash navigation apps requires optimizing it for effective execution for peripheral devices with low processing power capacity.

VI. CONCLUSION

The project aims to recognize and classify traffic signs in real-time, showcasing advanced machine learning methods that improve road safety and facilitate autonomous vehicle systems. High accuracy and quick inference times are guaranteed when utilizing the YOLOv5 model, making it perfect for real-time applications. The created pipeline guarantees a reliable workflow for traffic sign jobs, starting with data collection and preprocessing and ending with detection, classification, and visualization. This research aims to improve model robustness, geographical adaptability, and deployment efficiency for safer and smarter transportation. It also highlights continuous advancements to meet a variety of real-world difficulties. This study demonstrates The possibility of AI to alter transportation systems.

REFERENCES

- [1] C. Bahlmann, Y. Zhu, V. Ramesh, M. Pellkofer, and T. Koehler, "A system for traffic sign detection, tracking, and recognition using color, shape, and motion information," Proc. IEEE Intelligent Vehicles Symposium, 2005, pp. 255–260.
- [2] "Identification of degraded traffic sign symbols by a generative learning method," H. Ishida, T. Takahashi, I. Ide, Y. Mekada, and H. Murase, Proc. 18th Int. Conf. Pattern Recognition (ICPR 2006), vol. 1, 2006, pp. 531–534.
- [3] "Fundamentals in luminance and retroreflectivity measurements of vertical traffic signs using a color digital camera," by P. Siegmann, R. J. López-Sastre, P. Gil-Jiménez, S. Lafuente-Arroyo, and S. Maldonado-Bascón, IEEE Transactions on Instrumentation and Measurement, vol. 57, no. 3, pp. 607–615, 2008.
- [4] "Real-time Road signs recognition," A. Broggi, P. Cerri, P. Medici, P. P. Porta, and G. Ghisio, Proc. IEEE Intelligent Vehicles Symposium, 2007, pp. 981–986.
- [5] "A study on traffic sign recognition in scene images using genetic algorithms and neural networks," by Y. Aoyagi and T. Asakura, appeared in IEEE IECON 22nd International Conference on Industrial Electronics, Control, and Instrumentation, vol. 3, 1996, pp. 1838–1843.



INTERNATIONAL
STANDARD
SERIAL
NUMBER
INDIA



INTERNATIONAL JOURNAL OF INNOVATIVE RESEARCH

IN SCIENCE | ENGINEERING | TECHNOLOGY

 9940 572 462  6381 907 438  ijirset@gmail.com



www.ijirset.com

Scan to save the contact details