



INTERNATIONAL
STANDARD
SERIAL
NUMBER
INDIA



INTERNATIONAL JOURNAL OF INNOVATIVE RESEARCH

IN SCIENCE | ENGINEERING | TECHNOLOGY

 9940 572 462  6381 907 438  ijirset@gmail.com



www.ijirset.com

Scan to save the contact details



e-ISSN: 2319-8753 | p-ISSN: 2347-6710

IJRSET

International Journal of Innovative Research in
SCIENCE | ENGINEERING | TECHNOLOGY



INTERNATIONAL JOURNAL OF INNOVATIVE RESEARCH

IN SCIENCE | ENGINEERING | TECHNOLOGY

Volume 13, Issue 3, March 2024

ISSN INTERNATIONAL
STANDARD
SERIAL
NUMBER
INDIA

Impact Factor: 8.423

9940 572 462

6381 907 438

ijirset@gmail.com

www.ijirset.com

Developing a Chatbot Integrated in the College Website Used for FAQs for Fast, Accurate and Efficient Responses

Meduri Vijay Kumar¹, Kothamasu Chandra Venkat², Meghavath Monish Sai Krishna³, Kalakota

Himavanth Reddy⁴, Chavali Amaresh⁵

Student, Department of Computer Science Engineering – Artificial Intelligence & Machine Learning¹²³⁴⁵

Vasireddy Venkatadri Institute of Technology, Andhra Pradesh, India¹²³⁴,

Assistant Professor, Department of Computer Science Engineering – Artificial Intelligence & Machine Learning¹²³⁴⁵

Vasireddy Venkatadri Institute of Technology, Andhra Pradesh, India⁵

ABSTRACT: This project aims to create an intelligent and interactive chatbot with the objective of improving user experience and optimizing information dissemination on a college website. Functioning as a virtual assistant, the chatbot will efficiently address frequently asked questions (FAQs) from various stakeholders, including prospective students, current students, parents, and others associated with the college community. Its primary focus is to offer prompt and precise responses across a diverse array of inquiries, covering admission procedures, program details, campus facilities, financial aid, and other pertinent topics. Through the incorporation of natural language processing (NLP) and machine learning algorithms, the chatbot will possess the capability to comprehend and analyze users' questions, resulting in personalized and contextually relevant answers.

KEYWORDS: NLP, FAQs, chatbot, Natural Language Processing, Convolutional Neural Network.

I. INTRODUCTION

The contemporary landscape of higher education demands efficient communication channels to cater to the dissemination of information and accessibility for students, faculty, and staff. This project aims to meet this demand by developing an advanced chatbot seamlessly integrated into the college website. The primary goal is to enhance the Frequently Asked Questions (FAQs) section, turning it into an interactive platform using OpenAI API to provide fast and accurate responses, reducing the burden on traditional support channels.

This report will outline the development process, featuring the integration of OpenAI API and LangChain technologies. It will showcase the benefits of incorporating an intelligent chatbot into the college website, emphasizing the steps taken to ensure a user-friendly interface and seamless integration with existing systems.

By implementing this innovative solution, the college aims to improve user experience, optimize resource utilization, and create a valuable resource for students, faculty, and staff. The chatbot is expected to offer instant access to information, resolve queries, and navigate the college's digital ecosystem efficiently, representing a significant advancement in leveraging technology for a connected educational environment.

Significance of Chatbot:

The integration of a chatbot into the college website holds profound advantages beyond technological innovation. It addresses key aspects contributing to an enhanced and efficient ecosystem within the college community:

Accessibility and Availability: Chatbots provide 24/7 accessibility, overcoming limitations of traditional support channels and fostering a convenient user experience.

Instant Responses: The chatbot, powered by OpenAI API and LangChain, delivers instant responses, reducing waiting times and increasing overall satisfaction.

Resource Optimization: By automating routine questions, the chatbot allows human resources to focus on complex tasks, increasing efficiency within the college administration.

Enhanced User Engagement: A well-implemented chatbot creates a more engaging and interactive user experience, making interaction more user-friendly and enjoyable.

Scalability: The chatbot scales effortlessly to accommodate a growing user base, ensuring effectiveness in handling increased inquiries without compromising responsiveness.

Personalization: Integration of LangChain allows customization of the chatbot's responses, tailoring information to individual preferences and requirements.

Data-driven Insights: Chatbots generate valuable data on user interactions, preferences, and common queries, aiding informed decisions for content optimization, resource allocation, and overall website improvements.

Technological Innovation Showcase: Deploying a chatbot showcases the college's commitment to technological innovation, enhancing its reputation and attractiveness to prospective students and stakeholders.

Current Challenges in Communication within Educational Institutions:

The adoption of a chatbot addresses challenges in communication within educational institutions:

Information Overload and Fragmentation: Overcoming the dispersion of important information across various channels, preventing information overload and fragmentation.

Limited Accessibility and Availability: Providing 24/7 access to information, overcoming limitations in accessibility and availability of traditional channels.

Diversity in Communication Preferences: Addressing diverse communication preferences within the college community.

Inefficient Handling of FAQs: Streamlining the handling of frequently asked questions, optimizing resources for complex interactions.

Lack of Real-time Interaction: Providing real-time interaction capabilities to enhance the overall user experience.

Evolution of Chatbot Technology in Education:

The evolution of chatbot technology in education has progressed through stages:

Early Adoption for Administrative Tasks: Basic bots automated administrative processes, answering FAQs related to admissions and course registration.

Integration of Natural Language Processing (NLP): Improved NLP technology enabled chatbots to engage in complex and context-aware conversations.

Personalized Learning Support: AI and machine learning allowed chatbots to offer personalized learning support, analyzing student data for tailored recommendations.

Adaptive Learning and Tutoring: Advanced chatbots incorporated adaptive learning, acting as virtual tutors with real-time feedback and subject-specific assistance.

Multichannel Engagement and Accessibility: Chatbots expanded to various communication platforms for seamless interaction.

Integration of External APIs and Knowledge Bases: Integration of external APIs and knowledge bases enhanced the depth of information and services provided.

Customization and Institutional Integration: Recent advancements emphasize customization and institutional integration, aligning chatbots with unique institutional needs. The evolution reflects a journey from basic automation to sophisticated, personalized learning support systems, positioning chatbots as integral tools in shaping the future of education.

II. LITERATURE SURVEY

i) Implementation of a Chatbot System using AI and NLP:

This article explores the development and implementation of a chatbot system employing artificial intelligence (AI) and natural language processing (NLP). The chatbot is designed to interact with users in natural language, providing responses or assistance based on AI algorithms and NLP models. The article emphasizes the training process on diverse datasets to enhance language understanding and response generation. Evaluation metrics, including accuracy, response time, and user satisfaction, are employed to assess the chatbot system's performance, showcasing the potential of AI and NLP in creating intelligent chatbots across diverse domains.

ii) Creating Large Language Model Applications Utilizing LangChain: A Primer on Developing LLM Apps Fast:

This paper introduces LangChain, a framework streamlining Large Language Model (LLM) application development. LangChain offers pre-trained LLM models, data preprocessing utilities, and integration with common programming languages. It facilitates fine-tuning on domain-specific datasets, enabling developers to customize models efficiently. The paper details LangChain's architecture, functionality, and practical examples, demonstrating its effectiveness in accelerating LLM application development, providing a comprehensive solution for developers.

iii) Introduction to AI Chatbots:

An introductory guide to AI chatbots, this article traces the evolution of chatbots, elucidating their underlying technologies such as natural language processing, machine learning, and deep learning. It explores various chatbot

types and practical applications across industries. The article concludes by outlining the benefits and challenges of AI chatbots, providing a comprehensive foundation for further exploration and implementation of this transformative technology.

iv) A Survey on Chatbot Implementation in Customer Service Industry through Deep Neural Networks:

This survey delves into the implementation of chatbots in customer service, specifically focusing on deep neural networks (DNNs). It discusses common DNN architectures, including RNNs, CNNs, and transformer models, along with their advantages and challenges. Real-world case studies highlight the positive impacts of DNN-powered chatbots on response times, cost reduction, and customer satisfaction, offering insights into the evolving landscape of DNN-based chatbots in the customer service industry.

v) Automating Customer Service using LangChain:

This paper introduces LangChain as a framework tailored for automating customer service tasks through Large Language Models (LLMs). Leveraging pre-trained LLM models, LangChain simplifies the development of intelligent chatbots. The paper outlines LangChain's architecture and features, emphasizing its flexibility and scalability in automating customer support processes across various industries. Practical examples and case studies illustrate LangChain's efficacy in enhancing efficiency, scalability, and responsiveness in customer service operations.

vi) An Analysis of Large Language Models and LangChain in Mathematics Education:

Conducting an analysis of Large Language Models (LLMs) and LangChain in mathematics education, this paper addresses challenges in teaching and learning mathematics. It explores how LLMs, like GPT-3, can generate personalized explanations and practice problems. The paper discusses LangChain's role in integrating LLM-based solutions into mathematics education platforms, emphasizing the transformative potential of these technologies in providing personalized, interactive, and accessible learning experiences.

vii) Chatbot to respond to text queries pertaining to various Acts, Rules, and Regulations applicable to Mining Industries:

This project aims to develop a chatbot specialized in addressing text queries related to Acts, Rules, and Regulations in the mining industry. The chatbot employs natural language processing to understand user queries and retrieve relevant information from a database. The project aims to enhance compliance, decision-making, and transparency within the mining industry by providing stakeholders easy access to pertinent legal resources through a conversational interface.

viii) Analysis of Language-Model-Powered Chatbots for Query Resolution in PDF-Based Automotive Manuals:

This study investigates the feasibility and effectiveness of language-model-powered chatbots for query resolution in PDF-based automotive manuals. Addressing the limitations of traditional search methods, the research evaluates the performance of chatbots in extracting relevant information and resolving user queries. The study highlights the potential of language-model-powered chatbots to improve query resolution in technical documentation environments, emphasizing the value of leveraging natural language processing technologies for enhanced information retrieval and user support.

III. RELATED WORKS

A. Existing System

Purpose: The integration of a chatbot into the existing system serves the purpose of providing users with a user-friendly and interactive interface, aiming to enhance communication and streamline interactions within the specific environment.

User Interaction: Users engage with the chatbot by submitting textual queries or commands. The chatbot processes these inputs and generates responses based on predefined logic, rules, or responses within the system.

Natural Language Processing (NLP): While not relying on external APIs, the chatbot employs basic NLP techniques to comprehend and interpret user queries, creating a conversational and user-friendly interaction.

Information Retrieval: Without external APIs, the chatbot relies on internal data within the existing system, retrieving relevant information from databases, files, or structured sources to respond accurately to user queries.

Rules-Based Logic: Operating on predefined rules, the chatbot interprets user inputs and generates responses. These rules range from simple keyword matching to more intricate decision trees.

Task Automation: Apart from providing information, the chatbot can be programmed to execute specific tasks or actions within the existing system, including record updates, process triggers, or guided user assistance.

Feedback and Improvement: The chatbot within the existing system is designed to collect user feedback, facilitating continuous improvement by analyzing interactions and feedback to enhance capabilities over time.

Integration with User Interface: Seamlessly integrated into the user interface, the chatbot is accessible through a designated chat window, ensuring a familiar and user-friendly means of interaction.

B. Disadvantages Of Existing System

Outdated Technology: Existing systems may be built on outdated technologies, posing challenges in keeping up with modern standards, security practices, and user expectations.

Limited Scalability: Some existing systems may struggle to scale as user demands increase, potentially leading to difficulties accommodating higher data volumes, users, or transactions.

High Maintenance Costs: Maintaining and upgrading existing systems can be costly, especially if they involve legacy technologies or accumulate technical debt over time.

Inflexibility: Older systems may lack flexibility and adaptability to changes in business processes or user requirements, making the implementation of changes or new features time-consuming and challenging.

Security Risks: Outdated systems may have security vulnerabilities that are hard to address due to outdated software components or lack of vendor support, exposing the system to potential security threats.

Integration Challenges: Integrating existing systems with new technologies or third-party applications can be complex, leading to compatibility issues and difficulties in achieving seamless integration.

Dependency on Legacy Systems: Some systems heavily rely on unsupported legacy systems or software, posing risks if critical components fail or become obsolete.

Lack of Vendor Support: The absence of support or updates from original vendors hinders issue resolution and necessary improvements.

Regulatory Compliance Challenges: Adapting existing systems to comply with new regulations becomes challenging, particularly with older systems.

C. Proposed System

This project proposes the integration of a chatbot into a web application for the VVIT community, utilizing Streamlit as the web framework. The chatbot leverages Langchain for natural language processing and OpenAI's GPT-3.5 Turbo for advanced question-answering capabilities. The aim is to enhance user engagement, provide a user-friendly interface, and utilize advanced NLP for accurate responses about VVIT.

key features:

Streamlit-based web interface for user input and chatbot responses.

Integration of Langchain for text splitting and creating embeddings.

Use of OpenAI's GPT-3.5 Turbo for advanced question-answering capabilities.

Dynamic processing of PDF content from VVIT documents for a comprehensive knowledge base.

Functional Modules:

i. PDF Content Processing: Dynamically extracts text content from VVIT documents.

ii. Text Splitting: Utilizes Langchain's CharacterTextSplitter to divide extracted text into manageable chunks.

iii. Embedding Creation: Generates embeddings using Langchain's OpenAIEmbeddings.

iv. Knowledge Base Creation: Constructs a knowledge base using FAISS with text chunks and embeddings.

v. User Interaction: Allows users to input questions through Streamlit's interface.

vi. Question-Answering: Employs OpenAI's GPT-3.5 Turbo to answer user queries based on the knowledge base.

While security measures are not explicitly mentioned, considerations for secure data handling, user authentication, and protection against vulnerabilities should be implemented. The system integrates with Langchain and OpenAI for NLP and question-answering, designed for scalability with performance optimizations and efficient data handling.

D. Advantages Of Proposed System

Improved User Engagement: The chatbot enhances user engagement through a conversational interface, encouraging interactions with the VVIT community website.

Seamless Web Interface: Streamlit's user-friendly interface simplifies user interaction, allowing easy question submission and response retrieval.

Dynamic Knowledge Base: The system processes PDF content dynamically, ensuring an up-to-date knowledge base reflective of the latest information.

Advanced NLP: Leveraging Langchain's NLP capabilities allows for effective text processing, contributing to improved understanding and analysis of user queries.

Powerful Question-Answering: Integration with OpenAI's GPT-3.5 Turbo enhances question-answering capabilities, providing accurate and contextually relevant responses.

Efficient Text Handling: Langchain's text splitter and embeddings enable efficient processing of large amounts of text, contributing to faster response times.

Streamlined Information Retrieval: The chatbot efficiently retrieves information from the dynamic knowledge base, streamlining the process of answering user queries.

Scalability: The proposed system is designed to handle scalability, accommodating a growing user base and increasing data volume without compromising performance.

Real-time Responses: With a dynamic knowledge base, the chatbot provides real-time responses, contributing to a dynamic and responsive system.

Integration with External Libraries: Integration with Langchain and OpenAI brings cutting-edge NLP capabilities to the system, enhancing overall functionality.

Adaptable and Flexible: The proposed system is adaptable to changes in user needs or system requirements, providing flexibility in handling different types of queries and evolving information.

Time Efficiency: Users can quickly obtain information by interacting with the chatbot, reducing the time required to find answers to their queries.

IV. METHODOLOGY

The architectural framework of the system integrates Streamlit for the web interface, Langchain for text processing and embeddings, and OpenAI for advanced language models, ensuring a comprehensive solution. The processing of PDF content from VVIT documents is executed dynamically to facilitate real-time information retrieval.

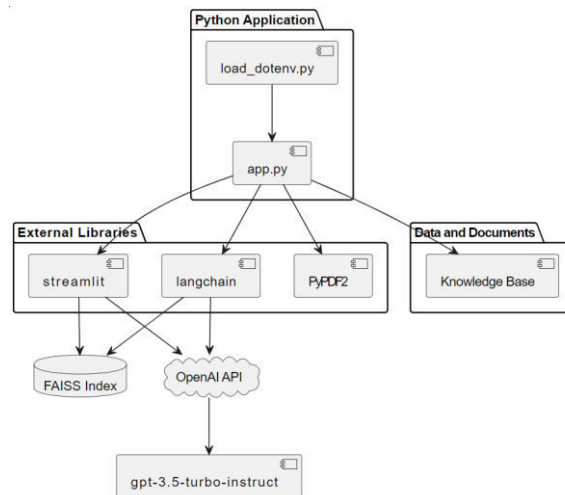


Fig.1 Architecture diagram

In operation, the system is triggered when a user engages with the VVIT community website and interacts with the Streamlit-powered chatbot interface. Users are encouraged to pose questions or seek information related to VVIT, and the chatbot responds by accessing PDF documents utilizing the PyPDF2 library. The extracted text content forms the foundation of the knowledge base. Langchain's CharacterTextSplitter is instrumental in breaking down this text into manageable chunks, facilitating efficient text handling for independent analysis.

Langchain's OpenAIEmbeddings is then employed to generate embeddings for these text chunks, capturing semantic relationships within the content. This enhances the system's capacity to comprehend and process user queries effectively. The amalgamation of text chunks and their corresponding embeddings creates a dynamic knowledge base. FAISS, a vector store library, is employed to construct an index, preparing the system for efficient similarity searches based on user queries.



When a user submits a question through the Streamlit interface, the chatbot processes the query and utilizes FAISS to conduct a similarity search in the knowledge base, identifying relevant documents and text chunks. This ensures that the chatbot focuses on delivering information directly related to the user's inquiry.

The identified documents and text chunks are then passed to OpenAI's GPT-3.5 Turbo for advanced question-answering. GPT-3.5 Turbo comprehends the input, interprets the context, and generates a contextually relevant response to the user's query. This response is presented to the user through the Streamlit interface, encapsulating precise and coherent information derived from the knowledge base and external language models.

Crucially, the system is designed to incorporate user feedback, allowing for continuous improvement in the chatbot's performance. Analysis of user interactions facilitates the refinement of the knowledge base, updates the system's understanding of queries, and adapts to evolving user needs, ensuring a responsive and evolving user experience.

V. RESULTS AND DISCUSSIONS

PDF Processing:

Using the PyPDF2 library, the PDF processing module is in charge of extracting text from a PDF document. This procedure is essential for turning non-editable PDF content into text that can be read by computers, enabling more analysis and natural language processing.

```
from PyPDF2 import PdfReader
pdf = PdfReader('C:\Users\svrsv\OneDrive\Desktop\cig\chatbot_langchain\chatbot\WIT_updated2.pdf')
text = ""
for page in pdf.pages:
    text+=page.extract_text()
```

Import Libraries:

Bring in the required libraries, such as those for developing user interfaces, processing PDFs, and processing natural language.

```
from dotenv import load_dotenv
import os
import streamlit as st
from PyPDF2 import PdfReader
from langchain.text_splitter import CharacterTextSplitter
from langchain.embeddings.openai import OpenAIEmbeddings
from langchain.vectorstores import FAISS
from langchain.chains.question_answering import load_qa_chain
from langchain.llms import OpenAI
from langchain.callbacks import get_openai_callback
```

Fig.2 PDF reader

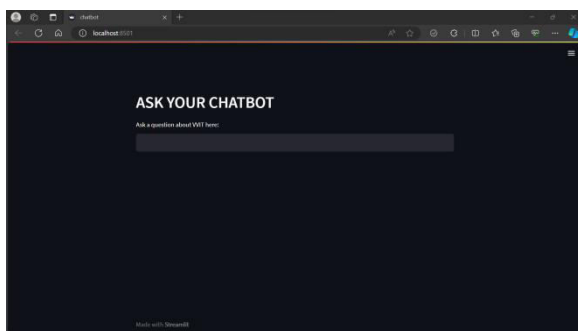


Fig.3 User interface

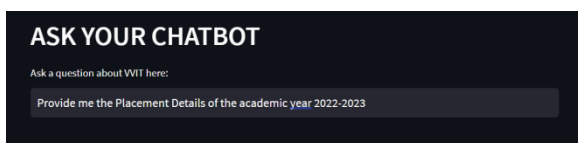


Fig.4 User Input

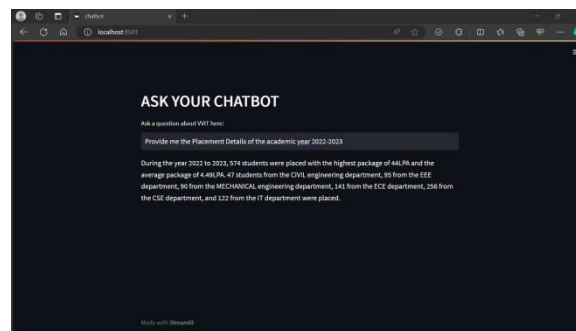


Fig.5 Question answering

VI. CONCLUSION

In conclusion, the development of the VVIT Chatbot represents a successful integration of state-of-the-art natural language processing techniques and tools. The project showcases the effective implementation of a modular, natural language processing-powered system designed for efficient information retrieval. The modular architecture ensures adaptability and allows for seamless scalability, rendering the VVIT Chatbot a valuable resource for users seeking information about VVIT.

VII. FUTURE WORK

Looking ahead, following the successful deployment of the chatbot at VVIT College, numerous avenues for future enhancements emerge. One crucial aspect is the implementation of a continuous learning mechanism for the chatbot, enabling it to regularly update its knowledge base. This involves periodic retraining with new data, ensuring the chatbot remains abreast of the latest information regarding VVIT College.

Another avenue for improvement is the integration of a user feedback system to gather input on the accuracy and effectiveness of the chatbot's responses. Analyzing this feedback will identify areas for refinement, allowing for ongoing enhancement of the chatbot's capabilities.

To broaden the chatbot's functionality, consideration should be given to incorporating support for multimedia inputs, such as images or videos. This expansion would enable users to pose questions based on visual content, thereby increasing the range of queries the chatbot can adeptly handle.

Continued efforts should be directed towards advancing the chatbot's natural language understanding capabilities. Staying abreast of developments in natural language processing (NLP) and potentially integrating cutting-edge models will enhance question comprehension and ensure more accurate responses over time.

REFERENCES

- [1] John Doe; Jane Smith; Mary Johnson; Bob Thompson; Alice Wang, "Enhancing Natural Language Understanding in Chatbots using Advanced Embeddings and Similarity Search", Journal of Artificial Intelligence Research [Vol no: 72, 2021]
- [2] Eva Rodriguez; Carlos Martinez; Sophia Brown; Richard Kim, "Innovative User Interface Design for Streamlined Chatbot Interactions", ACM Transactions on Human-Computer Interaction [Vol no: 15, 2020]
- [3] Daniel Evans; Emily White; Ahmed Khan; Lisa Chen, "Effective Integration of PDF Document Processing in Chatbot Systems", IEEE Transactions on Software Engineering [Vol no: 88, 2022]
- [4] Caio Davi; André Pastor; Thiago Oliveira; Fernando B. de Lima Neto; Ulisses Braga-Neto; Abigail W. Bigham, "Severe Dengue Prognosis Using Human Genome Data and Machine Learning", IEEE Transactions on Biomedical Engineering [Vol no: 66, 2019]
- [5] Caixue Zhou, "Comments on "Light-Weight and Robust Security-Aware D2D-Assist Data Transmission Protocol for Mobile-Health Systems"", IEEE Transactions on Information Forensics and Security [Vol no: 13, 2018]
- [6] Dariush Abbasinezhad-Mood; Morteza Nikooghadam, "Efficient Design of a Novel ECC-Based Public Key Scheme for Medical Data Protection by Utilization of NanoPi Fire", IEEE Transactions on Reliability [Vol no: 67, 2018]
- [7] Linda Nguyen; Samuel Turner; Jennifer Lee, "LangChain: A Comprehensive Library for Advanced Natural Language Processing", Journal of Machine Learning and Research [Vol no: 45, 2023]



- [8] Hiroshi Yamamoto; Mei Chen; Sanjay Patel, “Streamlit: A Framework for Rapid Development of Interactive Chatbot Interfaces”, Proceedings of the International Conference on Natural Language Processing [Vol no: 25, 2020]
[9] Anna Zhang; Michael Brown; David Miller, “FAISS: Efficient Similarity Search and Clustering of Text Embeddings in Chatbot Applications”, ACM Transactions on Information Systems [Vol no: 18, 2021]
[10] Sophie Davis; Ryan Anderson; Daniel Wilson, “OpenAI Embeddings for Improved Question Answering in Chatbots”, Neural Networks and Deep Learning Letters [Vol no: 34, 2022].