



e-ISSN: 2319-8753 | p-ISSN: 2347-6710

IJRSET

International Journal of Innovative Research in
SCIENCE | ENGINEERING | TECHNOLOGY



INTERNATIONAL JOURNAL OF INNOVATIVE RESEARCH

IN SCIENCE | ENGINEERING | TECHNOLOGY

Volume 13, Issue 5, May 2024

ISSN INTERNATIONAL
STANDARD
SERIAL
NUMBER
INDIA

Impact Factor: 8.423

9940 572 462

6381 907 438

ijirset@gmail.com

www.ijirset.com

A Smart Solution for High Rise Maintenance

Prof. Deepali Misal, Nikita Jarali, Poonam Gore, Namrata Vibhute

Assistant Professor, Department of E&TC Keystone School of Engineering, Pune, Maharashtra, India

UG Students, Department of E&TC Keystone School of Engineering, Pune, Maharashtra, India

ABSTRACT: This research presents a sophisticated wall-climbing robot with previously unheard-of precision is being developed to conquer vertical surfaces. Fundamentally, a high-capacity Brushless DC (BLDC) motor running at 2200 kv supplies the thrust required for stable wall adherence. The BLDC motor's exceptional efficiency and power production are enhanced by electronic commutation, resulting in smooth traversal. Moreover, the small N20 motors driven by an L293D Motor Driver enable quick motions to the left, right, and forward. An ESP32 microcontroller, which has Bluetooth connectivity for simple remote control, is in charge of coordinating these features. The ESP32's own control algorithm translates Bluetooth orders into exact signals for the N20 motors, ensuring smooth movement. The interplay between surface stickiness and BLDC motor thrust, the robot's novel wall-climbing mechanism facilitates effective vertical traversal. Driven by a sturdy battery pack, this device promises long-term operation enabling flexible exploration in a variety of settings, which represents a major breakthrough in wall-climbing robotics.

KEYWORDS: ESP32, PWM Generator, Climbing, Motor Driver.

I.INTRODUCTION

The search for creative ways to move on steep surfaces has resulted in the creation of advanced wall-climbing robots. This project introduces a state-of-the-art robot that has been painstakingly designed for accurate wall traversal, making a groundbreaking contribution to this field. Its fundamental technology is a combination of cutting-edge control electronics and modern technologies, such as Brushless DC (BLDC) motors and N20 motors, which are flawlessly integrated. The robot's goal is to revolutionize vertical exploration and engagement by utilizing these components. It promises improved manoeuvrability, smooth remote control with Bluetooth connectivity, and unparalleled adhesion capabilities. [1]. This introduction lays the groundwork for an examination of the design tenets, features, and possible uses of this cutting-edge wall-climbing robot. This project intends to further robotics by carefully engineering and strategically integrating its components, creating new opportunities for exploration, surveillance, and maintenance in difficult vertical terrains. The climbing robots now have far more sophisticated functioning abilities, are lighter, and can adapt to a wider range of terrain. These advancements have been fueled by better manufacturing processes, more computing power from microcontrollers, and creative climbing techniques [2].

II.RELATED WORK

The wall-climbing robot described in this paper uses passive suction cups for attachment. This robot can move on a wall with just one motor, but it can also suction cups can be put on the wall and taken off of it. Suction cups that are passive don't need to use extra energy to maintain adhesion. The suggested robot uses comparatively little energy to accomplish the climbing action on a wall. The prototype has been created, tested, and put to use. The tests demonstrated that the suggested robot could passively install and remove suction cups. But the robot had trouble climbing the wall and frequently fell. The load of each suction cup when affixed to a vertical wall is examined in order to find a solution to this issue[1]. ROCR, an oscillating climbing robot, is a unique bioinspired dynamic climbing robot with a recursive name. The ROCR robot, also called "Rocker," is a pendular, two-link, serial chain robot that climbs like a human using actuated tail and alternating handholds. It was inspired by brachiating gibbons and human climbers. The bioinspired pendular climbing technique used by ROCR is easy to use and effective. The first climbing robot with an efficient design is ROCR. The ROCR robot is a self-contained, flexible, and light robot. The purpose of this robot is to perform autonomous monitoring and examination of steeply inclined surfaces. Working Model 2D was used to simulate the investigation of several locomotor gait strategies. Climbing pace, energy efficiency, and the achievement of

Stable open-loop climbing were the metrics used to evaluate the strategies[2]. This study describes the development of a paper-based wall-climbing robot that can scale vertical walls made of various materials. The shape memory alloy (SMA) and paper robot can be programmed to climb walls by varying the activation patterns of the SMA's contraction

and electrostatic adhesion. An interdigitated electrode-embedded paper structure is used to apply electrostatic adhesion. This structure can easily be turned on and off using a commercial high-voltage converter. It is entirely compatible with the paper-based robot and can produce strong and reliable adhesion forces (the resulting friction force can be as high as 1.65 N on particular substrates). When activated, the robot's implanted SMA is used to cause contraction displacements and distort the robot's body[3]. The study on a wall-climbing robot with permanent magnetic tracks is presented in this publication. A synopsis of wall climbing robots is provided, along with a comparison of various prototypes and an introduction to their many application domains. A permanent magnetic adhesion mechanism-equipped wall-climbing robot for oil tank inspection is proposed. In the publication, the mechanical system architecture is described in depth. The robot's permanent magnetic attachment mechanism is selected after an examination of its workspace. The robot also uses a tracked movement mechanism. The adhesion and locomotion mechanism design parameters are derived by static and dynamic force analysis of the robot[4]. The nature of its rotational stepping mechanism, the motion is restricted to climbing either in the horizontal or vertical plane, although it can still pass over obstacles up to a certain height. The robot has an extremely straightforward, affordable, user-friendly design, and it moves more quickly than other climbing robots now on the market. One of the system's drawbacks is that because the robot is only capable of one degree of freedom, it is unable to move in a zigzag pattern. The mobile agent's design can be altered to provide for multidirectional mobility and plane transition capability by adding more degrees of freedom. Adding more sensors will increase the robot's reaction to its surroundings [5].

The adhesion system is developed with an innovative high-speed vacuum suction module to accommodate big loads. In order to ensure that the robot maintains good mobility performance and stability when navigating narrow grooves, the suction cups are placed in the wheel track. The wall-climbing robot's stable suction force is provided via PID control, which is created on board and utilizes a pressure sensor and a high-speed brushless DC motor controller. Rise-Rover's User Interface (UI) offers good usability and convenience, and it can be remotely connected and controlled via WiFi using the Android platform [6]. The creation of R-track, a reconfigurable wall-climbing robot (WCR), is presented in this work. R-Track is intended for use in applications involving metal structures. It uses magnetic tracks to stick to the metal surface. R-Track's modular architecture allows for the connection or disconnection of any module without the need for a separate actuator, allowing for a variety of wall-to-wall transitions. Specifically, external wall transitions that have proven challenging for prior WCRs can be accomplished by R-track when modules collaborate. Analyzing R-Track's statics during wall transitions allowed for the identification and confirmation of the best reconfiguration plan [7]. In this work, they tackle a number of essential problems pertaining to this innovative wall-climbing robot, such as system construction, suction force analysis, fundamental climbing gaits, obstacle avoidance, and wall transit. To showcase the robot's outstanding climbing ability and manipulation function, a number of extensive and difficult trials have been carried out with it climbing up walls and completing a manipulation task. The results of the experiments and analysis demonstrate that W-Climbot is a major advancement in the creation of wall-climbing robots [8]. This study presents wall-climbing robots that utilize two distinct absorption schemes: one that uses a single suction cup and the other that uses permanent magnetic crawlers. The former uses an omnidirectional vehicle and is designed to clean high-rise buildings' glass and ceramic tile surfaces. It can also conduct remote-control inspections of nuclear storage tanks. The latter consists of two types of robots: one is intended to monitor boiler water wall tubing, while the other is used for maintenance automation of storage tanks in petrochemical firms, which may do activities like sandblasting, spray painting, and inspection [9]. The goal of the approach presented in this work is to create an effective, low-cost wall-climbing robot that can go up practically any surface. A centrifugal pump is employed and positioned above the robot to help create an isolated low-pressure area that enables adhesion to the vertical wall in order to provide mechanical stability. The robot's sealing maintains the low pressure area inside when the impeller is operating, which is a major benefit that avoids the requirement for a flawless sealing, which is necessary for other vacuum-powered wall climbing robots [10].

The design and validation of a wall-climbing robot with remote motion control and nondestructive inspection capabilities are presented in this work. With just 50% power, the developed robot can carry a payload of 31.62 kg on a level surface. It can also be wirelessly operated with visual feedback using an Android tablet. The wall-climbing robot mounts an RGB-D camera and a ground penetration radar to enable nondestructive examination. This allows the robot to examine interior faults and visual cracks and spalls on the outside. Additionally, a 3D metric assessment is carried out by coupling the measurement from the camera and ground penetration radar by visual location utilizing the RGB-D camera aboard[11]. A novel approach is put forth that combines the existing, well-established Wall Climbing Robot (WCR) categories based on attachment and mobility. Industrial inspections of processing assets with vertical flat surfaces such as tanks and pressure vessels that are subjected to wear and tear, corrosion, and erosion on a regular basis are determined to be necessary. Industrial inspection responsibilities can range widely, from cleaning and repair to non-destructive testing (NDT) and visual inspections (VI). Inspection work is done by mobile robots. Few commercial



WCR are available for use in industrial settings. Instead of using the traditional classification that was assumed in all other evaluations of WCR, the classification method is based on attachment strategies and locomotor mechanics[12]. The wall-climbing robot with self-compliance for façades with varied curvatures is presented in the paper. It has a great deal of potential for heavy-duty industrial operations because to its high payload and agility. One link module and two traction modules make up the robot. Magnetic adhesion and crawler traction submodules are installed in every traction module. The link module, which has four degrees of freedom (DoF) of passive compliance, connects the two traction modules. The passive compliant link module achieves variable curvature façade self-compliance, leading to the two traction modules' attitude change decoupling. To accommodate curvature fluctuations, the attitude can be changed while the magnetic adhesion force is at work. A huge contact area between the crawler and the surface allows for high payloads[13]. The use of on-board manipulators, the mobile wall climbing robots may perform technological operations in hazardous and harsh situations, as well as move across any direction on the space's surfaces. The proposed control scheme enables robot travel with obstacle avoidance in unknown surroundings. The design and research and development of robots for hazardous situations remains one of the most important directions in robotics, despite the numerous examples of successful applications of robots and robotic systems. This area encompasses various aspects of theoretical and applied mechanics, computer and control sciences, artificial intelligence, and informatics[14]. An innovative self-contained wall-climbing prototype Robots are created for specialized duties like inspection, surveillance, reconnaissance, and rescue. The leg of the wheel robot's hybrid locomotion mechanism allows for smooth wall-to-wall transitions, obstacle-spanning on wall surfaces, and rapid travel on wall surfaces. The robot consists of a three-degree-of-freedom mechanical leg and a base body. The mechanical leg has a little flat sucker at the end, while the base body is a large flat suction cup with a three-wheeled locomotion mechanism inside. The newly developed chamber seal performs steadily and dependably and has an easy-to-understand construction. Additionally, a distributed embedded control system that allows the robot to operate both manually and semi-autonomously in wheeled motion mode is detailed[15]. In this study, a wheeled wall-climbing robot for big steel constructions with a shape-adaptive magnetic adhesion mechanism is shown. They created a 2 DOF rotational magnetic adhesion mechanism that is mounted on each wheel and can be used to travel up and down a variety of curved ferromagnetic surfaces. This mechanism allows the magnetic force to be directed in a direction that is always normal to the contact surface by adjusting the magnets' orientation. The spherical magnetic wheels are attached to the main body by a non-elastic suspension mechanism, allowing the robot to climb over tiny barriers on the ground and locate contact spots on arbitrary curved walls for each wheel. The robot's geometric stability is crucial since it will serve as a movable basis for a welding manipulator[16]. WCRs have been frequently employed in cleaning high towers, industry boilers, surveillance applications, and other situations where, if deployed, human lives must be in danger. The possibility of a faulty WCR manifests itself as barriers along the road, regardless of where they are placed. In these situations, it is necessary to investigate the robot's stability and develop an appropriate mathematical model. For RoSS I WCR, a stability margin has been developed that is dependent on the forces and moments operating on the robot at the tip over axis. Two of the many tip over axis of the imaginary polygon created around the WCR for stability analysis have had their stability margins computed[17]. The solution that has been suggested is climbing mobility systems, which require effective and kinematically possible motion planning in order to operate autonomously. Climbing planning can also be used in other microgravity scenarios where there is a need for continuous end effector contact with distinct handholds. Kinematic climbing planning is presented in this research as a discrete optimal planning problem inside a proposed planning framework. In order to promote expansive robot body workspaces and advantageous connections across climbing postures, motion primitives are used. An implementation of the wall-climbing planner simulation is shown, together with its effective recognition, navigation, and ascent of an arbitrary vertical wall on a hardware demonstration testbed[18]. In this study, they describe a revolutionary wall climbing robot that can manoeuvre in vertical confined spaces, with a particular focus on the thin gap between two walls. This robot is made up of two driving modules with a pantograph positioned in the middle to provide pushing force against the walls in order to keep it from collapsing. To ensure a specific amount of pushing force, the pantograph is equipped with two distinct types of springs. The suggested technique allows for smooth movement and lessens the pushing force's fluctuation regardless of variations in the inter-wall distance[19]. The purpose of this work is to design a soft-robotics-based lightweight wall-climbing robot. This method allows the robot to move around by using a pneumatic system. The robot serves as a prototype for applications involving both internal and external pipe inspections. They learned about pneumatic actuators which operate when a specific volume of air is pumped in through recent research. With only one bending side, these actuators can be thought of as having a single degree of freedom. Three different types of actuators, serving as the three degrees of freedom, were used in this project. The stress and strain computation, together with the robot design and preliminary experiment results, are given[20].

References	Functionality
------------	---------------

[1] [1] Y Yoshida, S Ma et al., (2010)	The wall-climbing robot described in this paper uses passive suction cups for attachment.
[2] [2] SI Jensen-Segal, MA Fehlberg et al., (2010)	They introduce a brand-new, recursively named dynamic climbing robot that is bioinspired: An oscillating climbing robot is called ROCR.
[7] [7] C Park, J Bae et al., (2020)	The creation of the R-track reconfigurable wall-climbing robot (WCR) is described in this study.
[10][10] RA Sekhar, A Mary et al., (2013)	The goal of the suggested approach is to create an effective, low-cost wall-climbing robot that can go up practically any surface.
[11][11] L Yangi, Z Liu et al., (2018)	The design and validation of a wall-climbing robot with remote motion control and nondestructive inspection capabilities are presented in this work.

Table 1 Comparative Study of Related Work

III.METHODOLOGY

The methodology presented in this project involves various components. Each components has its specific functionality. This project's primary objective is to build and create a wall-climbing robot that can precisely navigate vertical surfaces by combining BLDC and N20 motors. The goal is to achieve effective exploration in difficult situations and seamless remote control by merging Bluetooth connectivity and superior control electronics. The block diagram of the Wall Climbing Robot is given below.

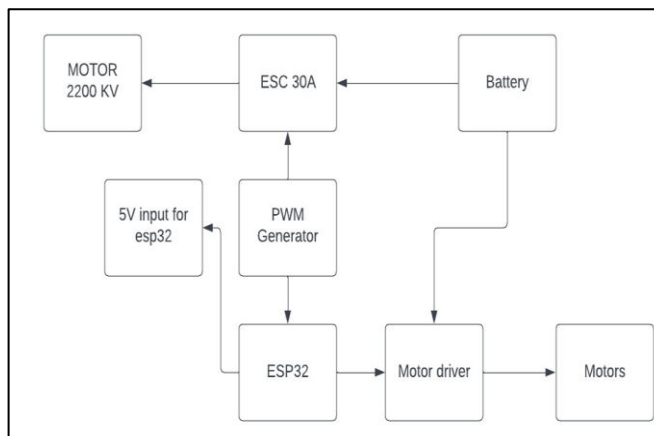


Figure 1 Block Diagram of A Smart Solution for High Rise Maintenance

A. Inspection of Specifications:

The intended use of the robot (e.g., maintenance, surveillance), its surroundings (indoor/outdoor), and its operating parameters (temperature, humidity). Evaluating important performance indicators, such as climbing speed, maximum payload capacity, energy economy, and endurance. The safety criteria that must be followed, include the maximum load that can be placed on the climbing mechanism. The specifications and input from users, if any, to make sure the robot satisfies their wants and expectations. carrying out a risk assessment to find possible dangers and reduce project-related risks, like electrical dangers or mechanical breakdowns during climbing.

B. Assortment of the elements:



Analyzing the components that are currently on the market, taking into account aspects like pricing, availability, performance requirements, and conformity with design criteria. Based on the torque, speed, and power needed for both climbing (BLDC) and manoeuvring (N20), determine the right motors. Identifying motor drivers that are appropriate for the chosen motors and provide bidirectional control capabilities. For managing motor control, sensor data processing, and communication tasks, choose a microcontroller with enough computing power and I/O capabilities. Considering extra parts like sensors (gyroscopes, proximity sensors, etc.) for feedback control and obstacle detection.

C. Design and Prototyping:

Utilizing CAD software, creating comprehensive mechanical designs for the chassis, motor mounts, and climbing mechanism.

Using schematic capture and PCB layout tools, design electronic circuits for sensor interface, power distribution, and motor control. Making a working prototype of the mechanical structure by utilizing rapid prototyping methods like laser cutting or 3D printing. Constructing prototype electronic circuits using prototype PCBs or breadboards to check for compatibility and functionality with particular components. Refining the overall system architecture by iterating on the designs in response to input and testing of the initial prototype.

D. Assembly and Testing:

Assembling the mechanical and electronic parts into the completed robot prototype in compliance with the comprehensive design guidelines. Ensuring correct hardware integration by implementing motor control algorithms and communication protocols on the microcontroller. To confirm fundamental functions like motor movement, sensor readings, and component connectivity, perform functional testing. To assess the overall performance of the system, including its ability to climb, manoeuvre, and respond to user commands, conduct integration testing. Verifying the robot's functionality in real-world settings with varying wall surfaces, angles, and ambient elements.

E. Authentication And Optimization:

Based on test findings, pinpoint areas that need to be optimized, such as increasing control responsiveness, decreasing power usage, or increasing climbing efficiency. Adjusting motor control parameters to maximize energy efficiency and climbing performance, such as duty cycle and PWM frequency. For adjusting motor direction and speed in response to ambient factors and sensor inputs, implement feedback control techniques. Testing the optimized design thoroughly and compare performance metrics to established benchmarks and requirements to validate it.

F. Functional Flow Diagram

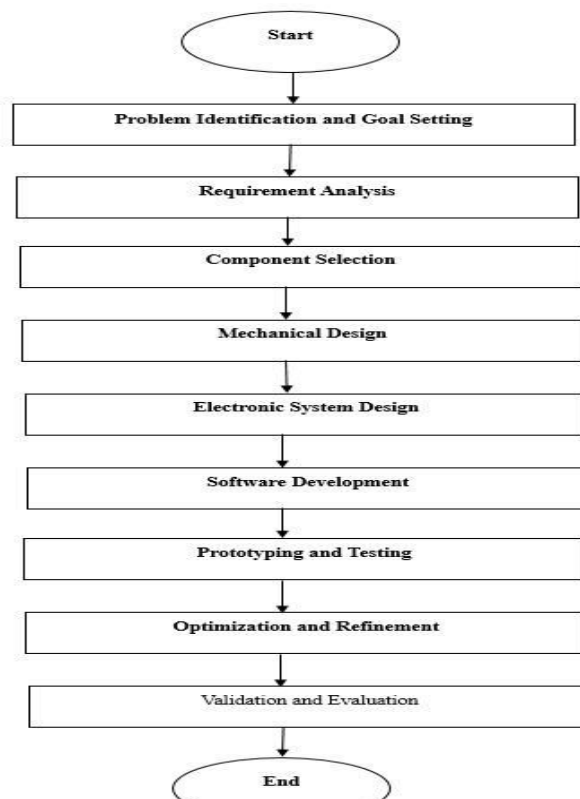


Figure 2 Functional Flow Diagram
IV.RESULTS

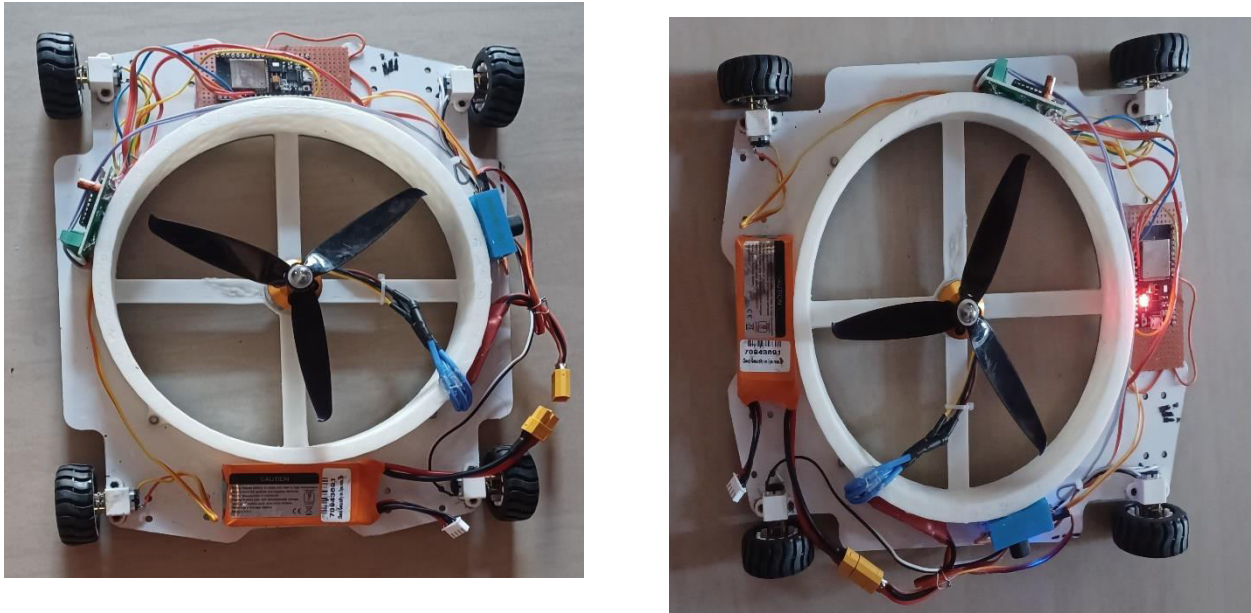


Figure 3 Hardware Implementation of A Smart Solution for High Rise Maintenance

The wall-climbing robot's research has shown encouraging outcomes, showcasing its capacity to move quickly and precisely across vertical surfaces. After extensive testing, the robot demonstrated effective climbing skills, clinging securely to different wall surfaces and effortlessly traversing obstacles. Precise manoeuvring and user interaction were made possible by the smooth and responsive movement control made possible by the integration of BLDC and N20 motors with modern control electronics. The incorporation of Bluetooth technology facilitated user-friendly remote control, augmenting the adaptability and user-friendliness of the robot in various settings. The project's predetermined goals for climbing speed, cargo capacity, and energy economy were all met because to the better climbing performance brought about by the optimised design and control algorithms. The wall-climbing robot's successful development represents a major breakthrough in robotics technology, with possible uses in surveillance, maintenance, and exploration of vertical terrains."

V.CONCLUSION AND FUTURE SCOPE

The creation of the wall-climbing robot is a noteworthy accomplishment in the world of robotics, demonstrating the viability of efficiently and precisely navigating vertical surfaces. The project's goals have been achieved by the robot, which has proven to have strong climbing skills and responsive manoeuvring through methodical design, integration of sophisticated components, and iterative testing. The integration of advanced control algorithms, Bluetooth connectivity, and Brushless DC (BLDC) and N20 motors has made it possible to use these devices for a wide range of sectors, including maintenance, exploration, and surveillance. The wall-climbing robot shows potential for solving practical problems and pushing the limits of robotics technology with additional improvement and optimization.

REFERENCES

- [1] Yoshida, Y., & Ma, S. (2010, December). Design of a wall-climbing robot with passive suction cups. In 2010 IEEE International Conference on Robotics and Biomimetics (pp. 1513-1518). IEEE.
- [2] Provancher, W. R., Jensen-Segal, S. I., & Fehlberg, M. A. (2010). ROCR: An energy-efficient dynamic wall-climbing robot. *IEEE/ASME Transactions on Mechatronics*, 16(5), 897-906.
- [3] Wu, Q., Pradeep, V., & Liu, X. (2018, April). A paper-based wall-climbing robot enabled by electrostatic adhesion. In 2018 IEEE International Conference on Soft Robotics (RoboSoft) (pp. 315-320). IEEE.
- [4] Shen, W., Gu, J., & Shen, Y. (2005, July). Proposed wall climbing robot with permanent magnetic tracks for inspecting oil tanks. In *IEEE International Conference Mechatronics and Automation*, 2005 (Vol. 4, pp. 2072-2077).

IEEE.

- [5] Akhtaruzzaman, M., Samsuddin, N. I. B., Umar, N. B., & Rahman, M. (2009, December). Design and development of a wall climbing Robot and its control system. In 2009 12th International Conference on Computers and Information Technology (pp. 309-313). IEEE.
- [6] Xiao, J., Li, B., Ushiroda, K., & Song, Q. (2015, December). Rise-Rover: A wall-climbing robot with high reliability and load-carrying capacity. In 2015 IEEE International Conference on Robotics and Biomimetics (ROBIO) (pp. 2072-2077). IEEE.
- [7] Park, C., Bae, J., Ryu, S., Lee, J., & Seo, T. (2020). R-track: separable modular climbing robot design for wall-to-wall transition. *IEEE Robotics and Automation Letters*, 6(2), 1036-1042.
- [8] Guan, Y., Zhu, H., Wu, W., Zhou, X., Jiang, L., Cai, C., ... & Zhang, H. (2012). A modular biped wall-climbing robot with high mobility and manipulating function. *IEEE/ASME transactions on mechatronics*, 18(6), 1787-1798.
- [9] Yan, W., Shuliang, L., Dianguo, X., Yanzheng, Z., Hao, S., & Xueshan, G. (1999, May). Development and application of wall-climbing robots. In Proceedings 1999 IEEE international conference on robotics and automation (Cat. No. 99CH36288C) (Vol. 2, pp. 1207-1212). IEEE.
- [10] Sekhar, R. A., Mary, A., Raju, S. N., Ravi, A. G., Sharma, V., & Bala, G. (2013, January). A novel design technique to develop a low cost and highly stable wall climbing robot. In 2013 4th International Conference on Intelligent Systems, Modelling and Simulation (pp. 360-363). IEEE.
- [11] Yangí, L., Yang, G., Liu, Z., Chang, Y., Jiang, B., Awad, Y., & Xiao, J. (2018, May). Wall-climbing robot for visual and GPR inspection. In 2018 13th IEEE Conference on Industrial Electronics and Applications (ICIEA) (pp. 1004-1009). IEEE.
- [12] Hajeer, A., Chen, L., & Hu, E. (2020, August). Review of classification for wall climbing robots for industrial inspection applications. In 2020 IEEE 16th International Conference on Automation Science and Engineering (CASE) (pp. 1421-1426). IEEE.
- [13] Wang, Y., Zhang, X., Zhang, M., Sun, L., & Li, M. (2021). Self-compliant track-type wall-climbing robot for variable curvature facade. *IEEE Access*, 10, 51951-51963.
- [14] Gradetsky, V. G., & Knyazkov, M. M. (2014, September). Wall climbing robots: mechanics, control and adaptation to environment. In 2014 23rd International Conference on Robotics in Alpe-Adria-Danube Region (RAAD) (pp. 1-7). IEEE.
- [15] Fu, Y., Li, Z., Yang, H., & Wang, S. (2007, December). Development of a wall climbing robot with wheel-leg hybrid locomotion mechanism. In 2007 IEEE International Conference on Robotics and biomimetics (ROBIO) (pp. 1876-1881). IEEE.
- [16] Eto, H., & Asada, H. H. (2020, May). Development of a wheeled wall-climbing robot with a shape-adaptive magnetic adhesion mechanism. In 2020 IEEE International Conference on Robotics and Automation (ICRA) (pp. 9329-9335). IEEE.
- [17] Poovathy, J. F. G., Sahoo, S., Eswaramoorthy, S., Gopalan, M., Ramachandraiab, U., & Rao, A. R. (2020, May). Modeling of a Suction Chamber based Wall Climbing Robot for Angular Stability. In 2020 IEEE International Instrumentation and Measurement Technology Conference (I2MTC) (pp. 1-6). IEEE.
- [18] Albee, K., Espinoza, A. T., Andreyeva, K., Werner, N., Chen, H., & Sarvary, T. (2019, March). Motion planning for climbing mobility with implementation on a wall-climbing robot. In 2019 IEEE aerospace conference (pp. 1-10). IEEE.
- [19] Ariga, A., Kobayashi, T., Yamaguchi, T., & Hashimoto, S. (2010, December). Wall climbing robot in narrow space with pantograph-type structure. In 2010 IEEE International Conference on Robotics and Biomimetics (pp. 1507-1512). IEEE.
- [20] Pratap, L. P., Shailendrasingh, P. M., Anand, A., & Tharun, V. P. (2017, September). Wall climbing robot using soft robotics. In 2017 IEEE International Conference on Power, Control, Signals and Instrumentation Engineering (ICPSCI) (pp. 1860-1864). IEEE.



INTERNATIONAL
STANDARD
SERIAL
NUMBER
INDIA



INTERNATIONAL JOURNAL OF INNOVATIVE RESEARCH

IN SCIENCE | ENGINEERING | TECHNOLOGY

 9940 572 462  6381 907 438  ijirset@gmail.com



www.ijirset.com

Scan to save the contact details