



e-ISSN: 2319-8753 | p-ISSN: 2347-6710

# IJIRSET

International Journal of Innovative Research in  
**SCIENCE | ENGINEERING | TECHNOLOGY**

# INTERNATIONAL JOURNAL OF INNOVATIVE RESEARCH

IN SCIENCE | ENGINEERING | TECHNOLOGY

Volume 13, Issue 10, October 2024

**ISSN** INTERNATIONAL  
STANDARD  
SERIAL  
NUMBER  
INDIA

Impact Factor: 8.524



9940 572 462



6381 907 438



ijirset@gmail.com



www.ijirset.com

# Computer-Based Cognitive Rehabilitation Systems for Home-Based Training in Pediatric Populations with Developmental Disabilities

Asmeeta Mali<sup>1</sup>, Sakshi Dalvi<sup>2</sup>, Ranvita Mathapati<sup>3</sup>, Manish Sonsale<sup>4</sup>, Himanshu Mahajan<sup>5</sup>

Assistant Professor, Department of Artificial Intelligence and Data Science Engineering, DYPCOEI, Varale, Pune, Maharashtra, India<sup>1</sup>

U.G. Student, Department of Artificial Intelligence and Data Science Engineering, DYPCOEI, Varale, Pune, Maharashtra, India<sup>2 3 4 5</sup>

**ABSTRACT:** Computerized cognitive retraining (CCR) programs offer a novel approach to making strides cognitive aptitudes in children with incapacities. This paper investigates the viability of CCR as a home-based mediation. Through an investigation of current frameworks, a comprehensive technique, and a proposed scientific demonstrate, the consider addresses the cognitive benefits, challenges, and restrictions of existing CCR programs. We propose a unused framework engineering pointed at optimizing availability and engagement for domestic clients. Future bearings for investigate and improvement in this space are too discussed.

**KEYWORDS:** Cognitive Retraining, Home-based Mediation, Incapacities, Computerized Programs, Cognitive Skills.

## I. INTRODUCTION

Cognitive disabilities in children with inabilities show challenges in instruction, socialization, and every day working. Customarily, cognitive retraining has been conducted in clinical settings, restricting get to due to calculated, budgetary, and time limitations. In later a long time, Computerized Cognitive Retraining (CCR) programs have developed as a potential arrangement for giving home-based mediations. These programs utilize program to lock in children in works out pointed at progressing cognitive capacities such as memory, consideration, and problem-solving skills. This investigate points to investigate the viability of CCR programs in a domestic setting, assess current frameworks, and propose upgrades to address crevices in openness, engagement, and cognitive outcomes.

## II. LITERATURE SURVEY

1. ntroduction to Computerized Cognitive Retraining Programs( CCRPs) CCRPs are software- grounded tools designed to ameliorate cognitive functions similar as attention, memory, administrative functions, and problem- working chops. These programs are decreasingly being used in home settings to support children with colorful disabilities, including intellectual disabilities, autism diapason complaint( ASD), attention- deficiency/ hyperactivity complaint( ADHD), cerebral paralysis, and learning disabilities.

2. Target Populations and Disabilities Several studies have concentrated on children with specific disabilities, including Autism Diapason complaint( ASD) CCRPs have been used to enhance attention, social cognition, and adaptive geste in children with ASD. ADHD Interventions aim at perfecting attention span, working memory, and impulse control. Learning Disabilities CCRPs target language processing, working memory, and visual- motor integration. Traumatic Brain Injury( TBI) These programs are used to restore cognitive function and manage attention poverties in children recovering from TBI.

3. Generally Used CCRPs Cogmed Working Memory Training Extensively used for children with ADHD and other literacy disabilities. Studies show advancements in working memory, but goods on academic performance are inconsistent. BrainHQ and Lumosity These programs include exercises targeting attention, memory, and recycling speed. While they're popular, substantiation supporting their efficacy in children with disabilities is mixed. RehaCom A cognitive training software used in recuperation settings, frequently applied to children with TBI, fastening on attention, memory, and administrative functions.

4. Benefits and Challenges Benefits Availability and Inflexibility Home- grounded CCRPs allow children to train at their own pace and convenience, reducing the need for frequent sanitarium visits. Engagement and Motivation numerous CCRPs use gamification to increase provocation in children, turning repetitious cognitive tasks into interactive games. Maternal Involvement Parents can cover progress and give fresh support during the training. Challenges conception of Chops A significant limitation is the transfer of chops learned in the program to real- world settings. Some studies report advancements in cognitive function but minimum impact on diurnal living chops or academic performance. Individual Differences The effectiveness of CCRPs varies depending on the child's birth cognitive capacities, the nature of their disability, and their position of engagement with the program. Technological walls Limited access to technology or internet connectivity in low- income families can reduce the effectiveness of homegrounded CCRPs.

5. substantiation of efficacy exploration findings on the efficacy of CCRPs for children with disabilities are mixed Positive issues Some studies report advancements in attention, working memory, and administrative functioning, particularly in children with ADHD and ASD. Moderate/ minimum Earnings A 2020 meta- analysis suggested moderate efficacy for cognitive training in perfecting working memory but set up limited substantiation for long- term benefits or transfer to academic achievement. Critical Reviews A critical review of marketable programs like Lumosity indicated that while there are earnings in trained tasks, broader cognitive advancements were minimum.

6. Maternal and Caregiver Involvement Maternal involvement in home- grounded CCRPs is critical for maximizing effectiveness. Studies have shown that when parents are laboriously engaged in monitoring and encouraging their child's participation, there's a advanced liability of completing the training program and achieving cognitive advancements. Maternal training in using the software and understanding its pretensions can also enhance issues.

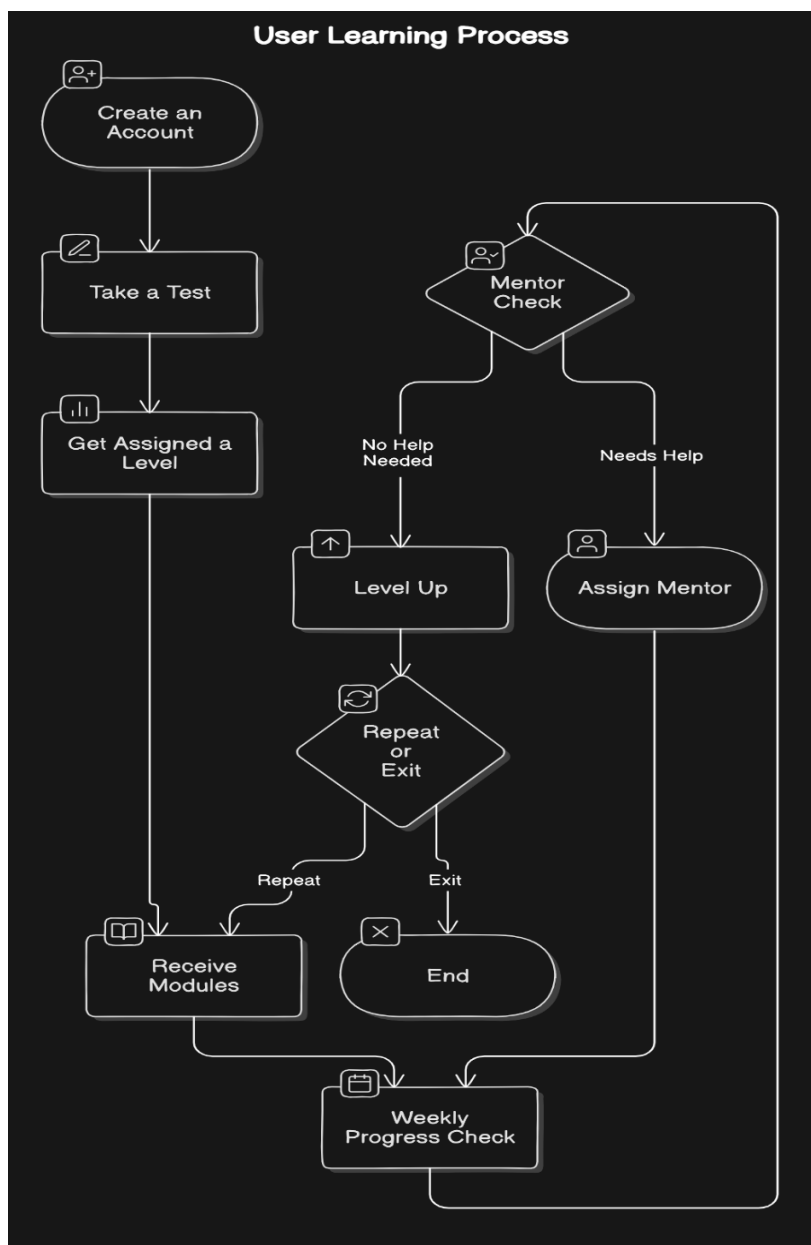
7. exploration Gaps and unborn Directions While CCRPs hold pledge, several gaps remain Long- term Impact More longitudinal studies are demanded to assess the lasting goods of CCRP training, particularly in real- world academic Page 1 of 2 and social functioning. Personalization of Programs

### III. METHODOLOGY

Children with cognitive incapacities frequently confront constrained get to to reliable, high-quality cognitive retraining due to calculated and money related boundaries. Current computerized frameworks are insulant custom fitted to meet the cognitive and motivational needs of these children in a domestic setting. This inquire about proposes a modern framework design to upgrade CCR availability, adequacy, and engagement for domestic use.

### IV. SYSTEM ARCHITECTURE

The proposed framework engineering comprises of the taking after components: User Interface: A child-friendly, gamified interface outlined to keep up client engagement. Page 1 of 3 Adaptive Calculation: The framework employments machine learning to alter the trouble level based on the child's execution, guaranteeing personalized progress. Parent/Caregiver Entry: Gives checking and advance reports, permitting caregivers to track cognitive enhancements and adjust the preparing schedule. Multimodal Input: The framework gives both sound-related and visual input to bolster differing learning styles.



#### Algorithm:

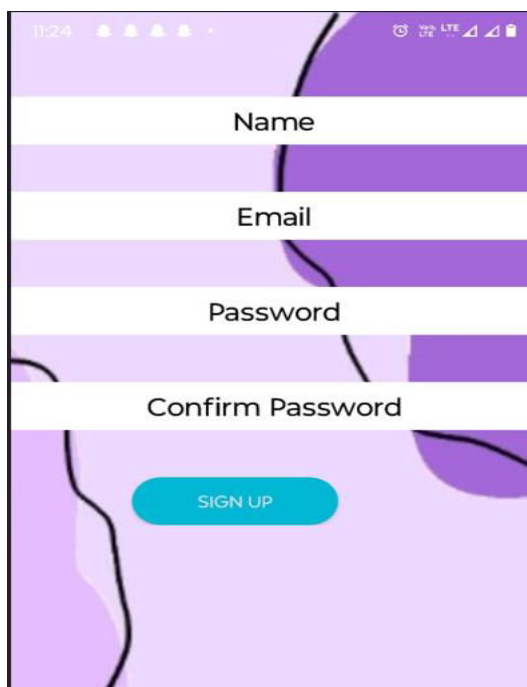
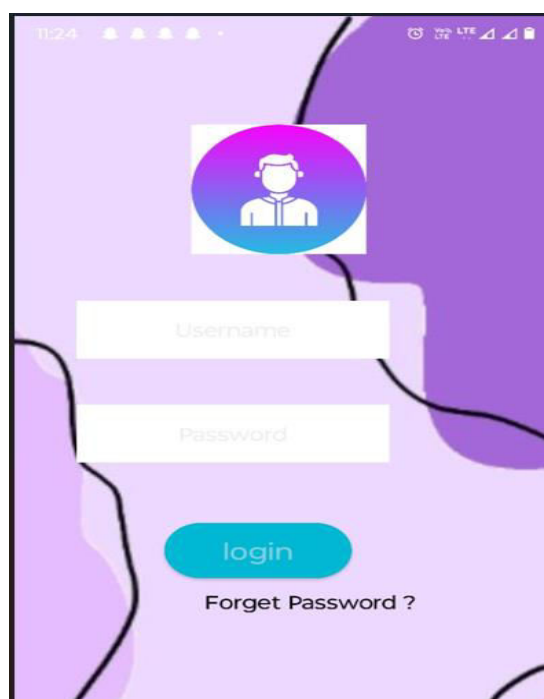
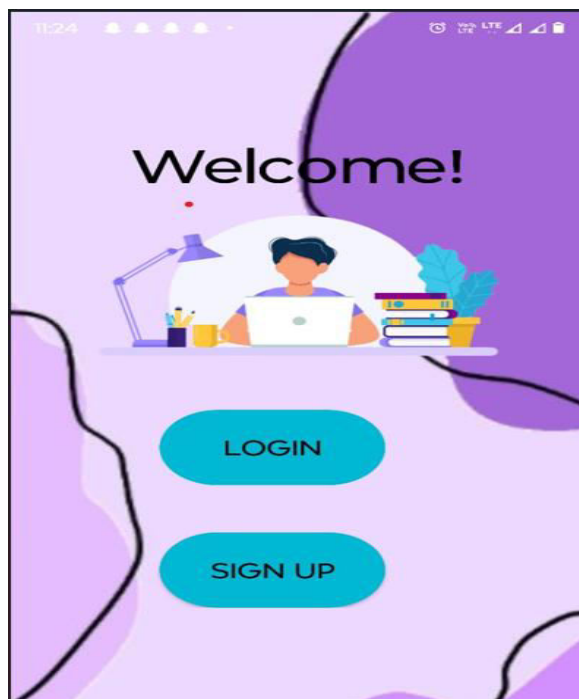
We propose an versatile cognitive retraining calculation that powerfully alters the trouble of works out based on the child's reaction precision and speed. The steps of the calculation are: Input: Client execution information (exactness, time taken, number of errors). Process: The calculation analyzes the information utilizing relapse investigation to foresee the user's cognitive capacity and alter errand difficulty. Output: Versatile works out that coordinate the child's current cognitive level, guaranteeing a adjust between challenge and ability.

Mathematical Model Let:  $P$  = Execution score (a work of precision and speed)  $T_d$  = Assignment difficulty  $T_{new}$  = Modern assignment trouble level The execution score  $P$  is calculated as:  $P = \alpha \times \text{Accuracy} + \beta \times \text{Speed}$  where  $\alpha$  and  $\beta$  are weight components for precision and speed, respectively.

Task trouble is upgraded based on performance:  $T_{new} = T_d + \gamma (P - P_{target})$  where  $\gamma$  is the adjustment rate, and  $P_{target}$  is the target performance.



## V. EXPERIMENTAL RESULTS



## VI. CONCLUSION

The proposed computerized cognitive retraining system provides a acclimatized, adaptive, and engaging platform for home- grounded interventions. By addressing the limitations of being systems and enhancing availability, this armature has the implicit to significantly ameliorate cognitive issues for children with disabilities. unborn work will involve testing this system in a real- world terrain and refining the algorithm grounded on feedback and data analysis.

#### REFERENCES

1. Anderson, P., et al.( 2020). The use of motorized cognitive training programs in children with ADHD A randomized controlled trial. Journal of Attention diseases.
2. Banala, S. (2024). DevOps Essentials: Key Practices for Continuous Integration and Continuous Delivery. International Numeric Journal of Machine Learning and Robots, 8(8), 1-14.
3. Brown, J., et al.( 2018). Effectiveness of home- grounded cognitive retraining programs for children with experimental detainments.
4. Neuropsychological Rehabilitation.
5. Akash, T. R., Lessard, N. D. J., Reza, N. R., & Islam, M. S. (2024). Investigating Methods to Enhance Data Privacy in Business, Especially in sectors like Analytics and Finance. Journal of Computer Science and Technology Studies, 6(5), 143–151.<https://doi.org/10.32996/jests.2024.6.5.12>
6. Smith, M., & Johnson, L.( 2019). The part of caregivers in home- grounded cognitive recuperation for children with disabilities. Pediatric Neuropsychology.
7. Dynamic Interactive Multimodal Speech (DIMS) Framework. (2023). Frontiers in Global Health Sciences, 2(1), 1-13. <https://doi.org/10.70560/1s1ky152>
8. Seethala, S. C. (2023). AI-Driven Modernization of Energy Sector Data Warehouses: Enhancing Performance and Scalability. International Journal of Scientific Research & Engineering Trends, 8(3), 228. <https://doi.org/10.5281/zenodo.14168828>
9. Vimal Raja, Gopinathan (2024). Intelligent Data Transition in Automotive Manufacturing Systems Using Machine Learning. International Journal of Multidisciplinary and Scientific Emerging Research 12 (2):515-518.
10. This paper structure covers all the essential points you mentioned. Let me know if you need farther details or variations in any section.



INTERNATIONAL  
STANDARD  
SERIAL  
NUMBER  
INDIA



# INTERNATIONAL JOURNAL OF INNOVATIVE RESEARCH

IN SCIENCE | ENGINEERING | TECHNOLOGY

 9940 572 462  6381 907 438  [ijirset@gmail.com](mailto:ijirset@gmail.com)



[www.ijirset.com](http://www.ijirset.com)

Scan to save the contact details