



e-ISSN: 2319-8753 | p-ISSN: 2347-6710

IJRSET

International Journal of Innovative Research in
SCIENCE | ENGINEERING | TECHNOLOGY



INTERNATIONAL JOURNAL OF INNOVATIVE RESEARCH

IN SCIENCE | ENGINEERING | TECHNOLOGY

Volume 13, Issue 10, October 2024

ISSN INTERNATIONAL
STANDARD
SERIAL
NUMBER
INDIA

Impact Factor: 8.524

9940 572 462

6381 907 438

ijirset@gmail.com

www.ijirset.com

Rainfall Prediction Using Machine Learning Algorithms

Ramakrishna Reddy Badveli¹, Sindhu R²

Assistant Professor, Department of Computer Science & Applications, The Oxford College of Science,
Bangalore, India

MCA Student, Department of Computer Science & Applications, The Oxford College of Science, Bangalore, India

ABSTRACT: Rainfall prediction is a crucial aspect of weather forecasting with wide-ranging implications for agriculture, water resource management, disaster preparedness, and environmental planning. In recent years, machine learning techniques have emerged as powerful tools for improving the accuracy and reliability of rainfall prediction models. This project presents a comprehensive review of various machine learning approaches employed in rainfall prediction, ranging from traditional statistical methods to advanced algorithms such as Linear Regression, support vector machines, and ensemble learning techniques. The review explores the key challenges and considerations in rainfall prediction, including data preprocessing, feature selection, model selection, and evaluation metrics. Additionally, it discusses the impact of environmental factors, geographical characteristics, and climate change on rainfall patterns and the potential for incorporating remote sensing data and meteorological variables into prediction models. By synthesizing existing research and identifying future research directions, this project aims to contribute to the ongoing efforts to enhance the accuracy and reliability of rainfall prediction models for practical applications in diverse domains.

KEYWORDS: Linear Regression, Logistic Regression, SVM.

I. INTRODUCTION

Rainfall Prediction is an advanced machine learning models enhance rainfall prediction accuracy, promoting proactive decision-making in agricultural optimization, water resource management, disaster preparedness, economic benefits, environmental sustainability, and public safety. This technology enhances resilience, efficiency, and sustainability across various sectors. The project aims to enhance rainfall prediction accuracy, improve agriculture, and promote environmental sustainability through real-time weather data and machine learning models. The project uses real-time weather data to enhance rainfall predictions, aiding in agriculture, water resource management, and disaster preparedness, promoting economic benefits and environmental sustainability. The project aims to enhance rainfall prediction accuracy across sectors but faces challenges like incomplete data, sensor errors, overfitting, interpretability issues.

II. METHODOLOGY

a. CatBoost Model

CatBoost (Categorical Boosting) is an advanced gradient boosting decision tree algorithm developed by Yandex, primarily designed to manage categorical features efficiently and enhance model performance. It is an open-source library that supports various machine learning tasks, including classification, regression, and ranking.

b. Random Forest

Random Forest is a versatile and widely-used ensemble learning method primarily for classification and regression tasks. It constructs multiple decision trees during training and merges their outputs to improve predictive performance and control overfitting. Developed by Leo Breiman and Adele Cutler, Random Forests leverages the power of multiple trees to achieve higher accuracy and robustness compared to individual decision trees.

c. XGBoost

XGBoost (Extreme Gradient Boosting) is a highly efficient and scalable implementation of gradient boosting that has become a dominant tool in the field of machine learning, particularly for structured/tabular data. Developed by Tianqi Chen, XGBoost is known for its speed, performance, and scalability. It has been widely adopted in data science competitions and real-world applications due to its ability to achieve state-of-the-art results.

2.1 Architecture Diagram of Rainfall Prediction

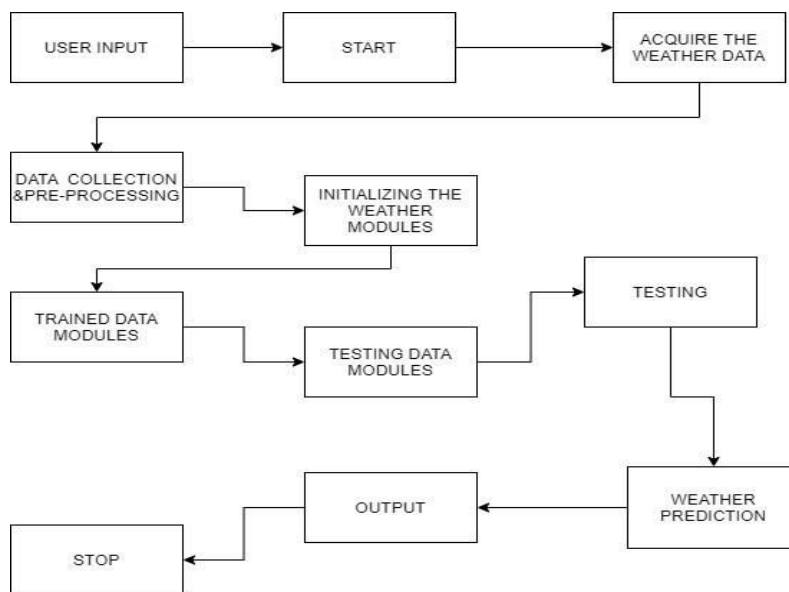


Figure-2.1 Architecture Diagram of Rainfall Prediction

2.2 Pseudo Code

```

Step 1: Import necessary libraries
import pandas as pd
import numpy as np
from sklearn.ensemble import RandomForestClassifier
import joblib

Step 2: Load pre-trained models
rainfall_model = joblib.load('rainfall_prediction_model.pkl')
Load the pre-trained model

Step 3: Load today's weather data
today_weather_data = pd.read_csv('today_weather_data.csv')
Load current weather data

Step 4: Preprocess the data
def preprocess_data(data)
    return data

Step 5: Prepare features for prediction
Preprocess the data

Step 6: Predict rainfall for tomorrow
Make the prediction

Step 7: Interpret the prediction result
if rain_prediction[0] == 1:
    prediction = "Rain"
else:
    prediction = "No Rain"

Step 8: Display the prediction result
  
```

2.3 Description of Algorithms

2.3.1 CatBoost (Categorical Boosting)

CatBoost employs a method known as ordered encoding to handle categorical features efficiently. This approach utilizes target statistics from preceding rows to calculate replacements for categorical variables. Unlike traditional methods such as one-hot encoding, CatBoost integrates this ordered boosting technique with a novel categorical feature encoding strategy. This combination minimizes the risk of overfitting and enhances predictive accuracy, particularly beneficial for smaller datasets prone to prediction shift issues in gradient boosting models. By ensuring that target information from each iteration does not influence model fitting in the same iteration, CatBoost achieves more stable and reliable results. It is renowned for producing robust and precise models while simplifying data preprocessing by automatically managing missing values during training.

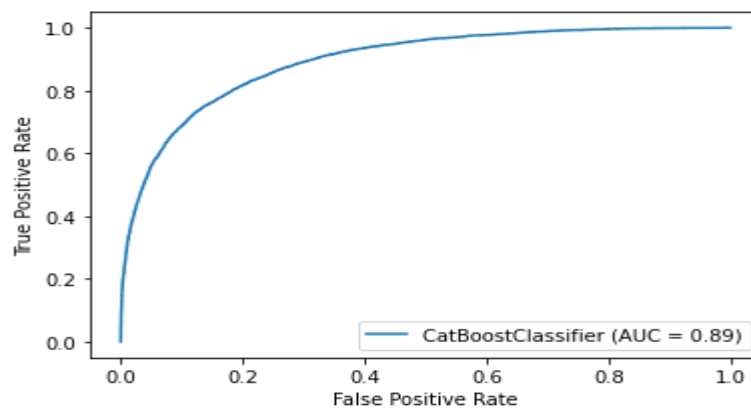


Figure 2.3.1:- CatBoostclassifier

2.3.2 Random Forest classifier

A random forest is a collective estimator that trains multiple decision tree classifiers on various sub-samples of the dataset and leverages averaging to enhance predictive accuracy and mitigate over-fitting. As an ensemble method, Random Forest integrates the predictions of several distinct decision trees to yield a more precise and reliable model. By combining the predictions of numerous trees, Random Forest decreases the likelihood of overfitting, a common issue with individual decision trees. Random Forest also provides an assessment of feature importance, showing the extent to which each feature contributes to the model's predictive power. It is resilient to noise and outliers in the data and is capable of managing large datasets and high-dimensional data effectively.

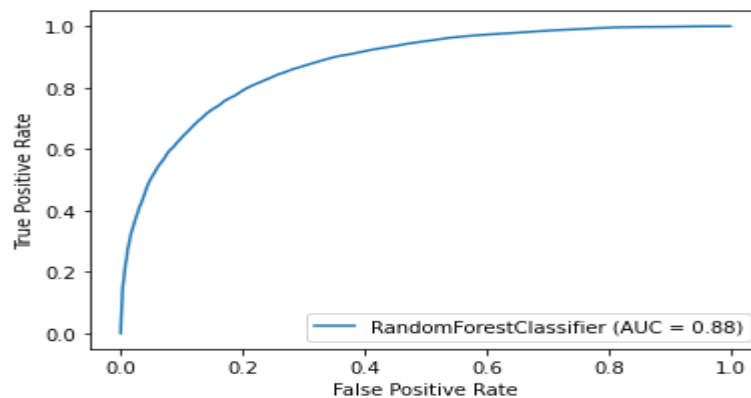


Figure 2.3.2:-RandomForestClassifier

2.3.3 Logistic Regression

Logistic Regression analyzes the relationship between one or more free factors and classifies information into discrete classes. It is broadly utilized in prescient modeling, where the show gauges the numerical likelihood of whether an occurrence has a place to a particular category or not. if the yield of the sigmoid work (assessed likelihood) is more noteworthy than a predefined limit on the chart, the demonstrate predicts that the occasion has a place to that course. If the assessed likelihood is less than the predefined edge, the show predicts that the occasion does not have a place to the course.

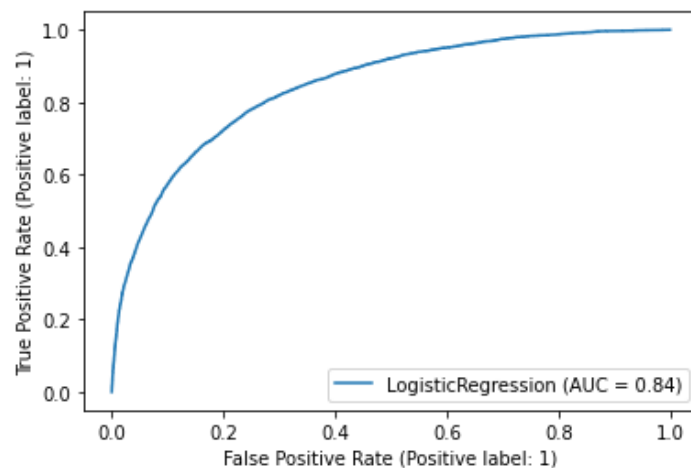


Figure 2.3.3:-LogisticRegression

III. RESULTS

| | | | |
|-----------------------|------------|-----------------------|--------|
| Date | 29-05-2024 | Minimum temperature | 13.4 |
| Maximum Temperature | 22.9 | Rainfall | 0.6 |
| Evaporation | NA | Sunshine | NA |
| Wind Gust Speed | 44 | Wind Speed 9am | 20 |
| Wind Speed 3pm | 24 | Humidity 9am | 71 |
| Humidity 3pm | 22 | Pressure 9am | 1007.7 |
| Pressure 3pm | 1007.1 | Temperature 9am | 16.9 |
| Temperature 3pm | 21.8 | Cloud 9am | 8 |
| Cloud 3pm | NA | Location | Albury |
| Wind Direction at 9am | W | Wind Direction at 3pm | WNW |
| Wind Gust Direction | W | Rain Today | NA |

Figure 3.1:-Input values to Predict Rainfall

IV. CONCLUSION

To predict tomorrow's rainfall, various machine learning models were employed, including K-Nearest Neighbors, Support Vector Machine, Logistic Regression, CatBoost, XGBoost, and Naive Bayes. Each model was trained on historical weather data to capture patterns and trends related to rainfall. KNN and SVM offered robust performance by leveraging neighborhood data points and optimal hyperplanes, respectively. Logistic Regression provided a

straightforward probabilistic framework, while CatBoost and XGBoost enhanced predictions through gradient boosting on decision trees. Naive Bayes, with its simplistic probabilistic approach, served as a baseline comparison. Together, these models provided a comprehensive and diverse set of predictions, with ensemble or averaged outputs potentially offering the most accurate forecast for tomorrow's rainfall.

REFERENCES

1. Ashish Kumar, RAAJ Ramsankaran, Luca Brocca, Francisco Munoz-Arriola: "A Machine Learning Approach for Making strides Near-Real-Time Satellite-Based Precipitation Gauges by Coordination Soil Moisture".
2. Aakash Parmar, Kinjal Mistree, Mithila Sompura: "Machine Learning Methods For Precipitation Expectation". Conference: 2017 Worldwide Conference on Advancements in Data Inserted and Communication Frameworks (ICIIECS) at Coimbatore.
3. A. K. Sahai, M. K. Soman, and V. Satyan: "All India summer storm precipitation expectation utilizing an Fake Neural Organize," Climate Dynamics.
4. Amitav Mahapatra, Deepak Ranjan Nayak, Pranati Mishra, College of Designing and Innovation: "A Study on Precipitation Forecast utilizing Counterfeit Neural Organize". In Worldwide Diary of Computer Applications.
5. Afzan Adam, Nor Samsiah Sani, Abdul Hadi Abd Rahman, Israa Shlash, Mohd Aliff: "Outfit learning for precipitation expectation". Worldwide Diary of Progressed Computer Science and Applications-2020.
6. A K Upadhyay, Sanjiv Sharma, Hemant Kumar Soni, Neelam Mishra, Office of Computer Science and Building, NRI College of Building and Management.



INTERNATIONAL
STANDARD
SERIAL
NUMBER
INDIA



INTERNATIONAL JOURNAL OF INNOVATIVE RESEARCH

IN SCIENCE | ENGINEERING | TECHNOLOGY

 9940 572 462  6381 907 438  ijirset@gmail.com



www.ijirset.com

Scan to save the contact details