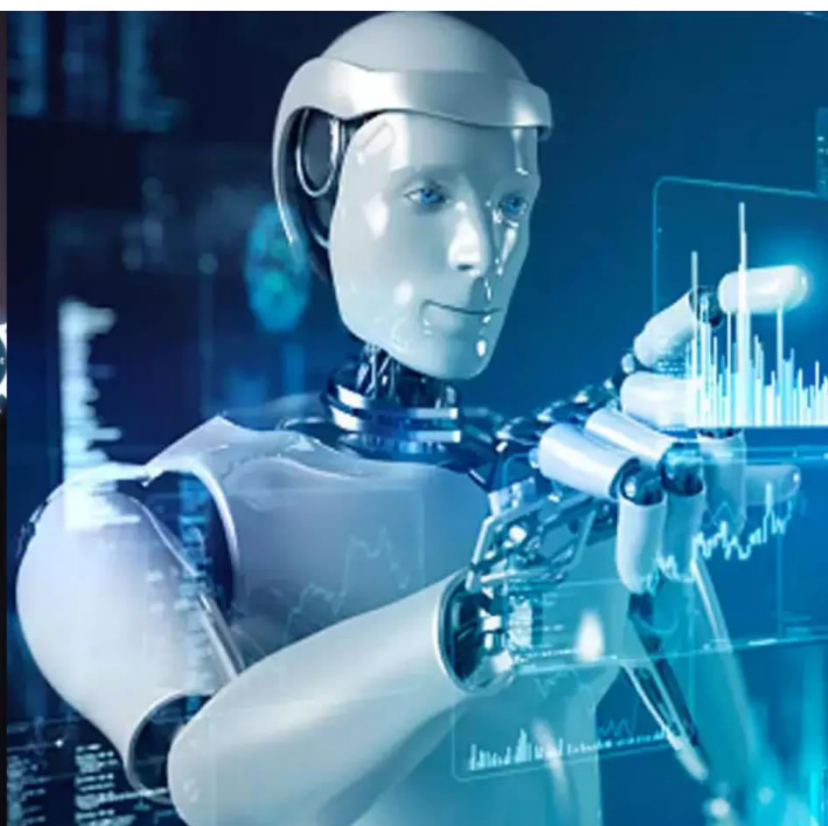




International Journal of Innovative Research in Science Engineering and Technology (IJIRSET)

(A Monthly, Peer Reviewed, Refereed, Scholarly Indexed, Open Access Journal)



Impact Factor: 8.699

Volume 14, Issue 4, April 2025

Evaluating the Effectiveness of 360 Degree Work Performance Appraisals

Dr. S Namasivayam, Sanjay S

Professor and Head Commerce (BPS), Dr. N.G.P. Arts and Science College, Coimbatore, India

Student, Commerce (BPS), Dr. N.G.P. Arts and Science College, Coimbatore, India

ABSTRACT: This study explores the effectiveness of 360-degree performance appraisal systems in modern organizational settings. Unlike traditional top-down evaluations, the 360-degree approach incorporates feedback from multiple sources including peers, subordinates, supervisors, and sometimes clients, offering a comprehensive view of an employee's performance. The objective of this research is to assess how accurately this method reflects actual work performance, enhances employee development, and contributes to organizational growth. Through literature review, case studies, and surveys, the study examines the benefits, limitations, and implementation challenges of the 360-degree appraisal system. Findings suggest that while the system promotes transparency, self-awareness, and constructive feedback, its success largely depends on organizational culture, the quality of feedback, and proper training for participants. The paper concludes with recommendations to optimize the effectiveness of 360-degree appraisals in achieving both individual and organizational performance goals.

KEYWORDS: 360-Degree Appraisal, Performance Evaluation, Multi-Source Feedback, Human Resource Management, Employee Development, Organizational Growth, Feedback System, Appraisal Methods, Workplace Performance.

I. INTRODUCTION

Performance appraisal plays a vital role in human resource management by evaluating employee performance, identifying development areas, and supporting career growth. Traditional methods, often reliant on supervisor feedback, are criticized for being biased and limited in scope. In contrast, the 360-degree appraisal system offers a more comprehensive approach by collecting feedback from supervisors, peers, subordinates, and clients, providing a holistic view of an employee's performance. This method aims to reduce bias, enhance fairness, and foster a culture of continuous improvement. While it offers benefits such as increased engagement and well-rounded evaluations, challenges like feedback overload, perceived subjectivity, resistance to criticism, and implementation issues can hinder its effectiveness. Therefore, a critical examination is required to determine whether 360-degree appraisals truly enhance individual and organizational performance.

STATEMENT OF PROBLEM

The effectiveness of 360-degree performance appraisals is debated due to concerns over feedback bias, fairness, and inconsistent outcomes on employee growth and organizational performance. Despite its holistic approach, empirical evidence on its long-term impact—especially in virtual or hybrid work settings—remains limited. Challenges also include managing psychological effects and ensuring accurate feedback through technology. Addressing these gaps is essential for enhancing the appraisal system's relevance in today's dynamic work environment.

SCOPE OF THE STUDY

This study evaluates the effectiveness of 360-degree performance appraisals in improving employee performance, professional growth, and organizational development. It examines feedback quality, impact on productivity, organizational benefits, and key challenges, while also comparing it with traditional appraisal methods. The study may focus on specific sectors based on data availability.

OBJECTIVES OF THE STUDY

- To measure the accuracy and fairness of feedback from multiple sources (peers, managers, subordinates, and self-assessment).
- To assess its effectiveness in aligning individual performance with organizational goals.

II. REVIEW OF LITERATURE

- **Antonioni, D. (1996).** "Designing an Effective 360-Degree Appraisal Feedback System" – Organizational Dynamics Discusses how well-designed 360-degree feedback systems enhance employee development and performance.
- **Bracken, D. W., Timmreck, C. W., & Church, A. H. (2001).** "The Handbook of Multisource Feedback" – Jossey-Bass Explores various dimensions of 360-degree feedback, including implementation challenges and effectiveness.

III. RESEARCH METHODOLOGY

This study employs both primary and secondary data. Primary data is collected through structured questionnaires from 93 employees and HR professionals in IT companies in Coimbatore. Secondary data is sourced from research papers, reports, and relevant websites. A stratified random sampling method ensures representation across employee levels. Data is analyzed using simple percentage analysis and the chi-square test to identify patterns and relationships.

LIMITATION OF THE STUDY

- 360-degree appraisal provides holistic feedback, reducing individual bias.
- It supports employee development by identifying strengths and skill gaps.
- Encourages collaboration and open communication within teams.
- Feedback may be influenced by personal bias or workplace politics.
- The process is time-consuming and requires structured implementation.
- Without proper follow-up, the impact of feedback may be limited

IV. ANALYSIS AND INTERPRETATIONS

The analysis shows that 360-degree appraisals are more effective than traditional methods, offering accurate, multi-source feedback that supports employee growth and improves workplace collaboration. Despite benefits, challenges like bias and time constraints exist. Overall, the method positively impacts employee satisfaction and organizational performance.

➤ SIMPLE PERCENTAGE

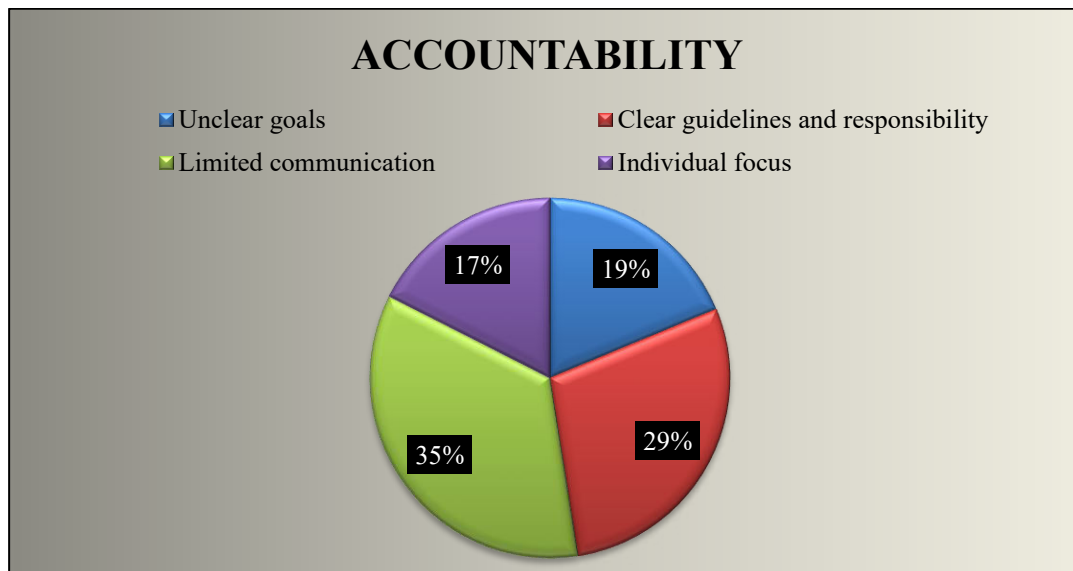
TABLE NO.: 1

PARTICULARS	NO OF RESPONDENTS	PERCENTAGE %
Unclear goals	15	19.0
Clear guidelines and responsibility	23	29.0
Limited communication	28	35.0
Individual focus	14	17.0
Total	80	100

(SOURCE: PRIMARY DATA)

INTERPRETATION

From the above table, the most significant factor affecting accountability is limited communication (35%), followed by clear guidelines and responsibility (28.7%). Unclear goals (18.8%) and individual focus (17.5%) are less reported but still impact accountability.



➤ CHI- SQUARE

1. To find the significant difference between Age of the respondents and Perception of Fair Decision – Making

TABLE NO.: 2

Chi-Square	Value	df	Asymptotic Significance (2-sided)
Pearson Chi-Square	88.228 ^a	16	.000

INTERPRETATION

The Chi-Square test result ($\chi^2 = 88.228$, $df = 16$, $p = .000$) suggests a statistically significant association between the variables being analyzed. Since the p-value is below 0.05, we reject the null hypothesis, indicating that the relationship between the variables is not due to random chance. However, if any expected counts are too low, the test's reliability might be compromised.

V. FINDINGS

- **Accountability Challenges:** 35% face limited communication as a barrier to accountability.
- The Chi-Square test ($\chi^2 = 88.228$, $p = 0.000$) shows a significant relationship between age and perception of fair decision-making, though reliability is affected as 76% of cells have expected counts below 5; merging categories or increasing the sample size is recommended for more accurate results.

VI. SUGGESTIONS

To enhance the effectiveness of 360-degree performance appraisals, organizations should ensure clear communication of the process, provide regular training to evaluators to reduce bias, and implement structured guidelines for consistency. Incorporating follow-up actions like personalized development plans and using technology to streamline the process can improve feedback accuracy, employee development, and overall organizational growth.

VII. CONCLUSION

The 360-degree performance appraisal system offers a multi-dimensional view of employee performance by incorporating feedback from peers, subordinates, supervisors, and sometimes clients. This approach encourages self-awareness, skill development, and improved communication within teams. The study concludes that, when implemented effectively with clear procedures, proper training, and confidentiality, 360-degree appraisals can significantly enhance employee growth and contribute to organizational success. However, to maximize its impact, organizations must address challenges such as bias, feedback quality, and time constraints.

REFERENCES

1. Antonioni, D. (1996). Designing an effective 360-degree appraisal feedback system. *Organizational Dynamics*, 25(2), 24-38.
2. Bracken, D. W., Timmreck, C. W., & Church, A. H. (2001). *The Handbook of Multisource Feedback*. Jossey-Bass.



INTERNATIONAL
STANDARD
SERIAL
NUMBER
INDIA



INTERNATIONAL JOURNAL OF INNOVATIVE RESEARCH

IN SCIENCE | ENGINEERING | TECHNOLOGY

 9940 572 462  6381 907 438  ijirset@gmail.com



www.ijirset.com

Scan to save the contact details