



# International Journal of Innovative Research in Science Engineering and Technology (IJIRSET)

*(A Monthly, Peer Reviewed, Refereed, Scholarly Indexed, Open Access Journal)*



**Impact Factor: 8.699**

**Volume 14, Issue 4, April 2025**

# GreenScan

K. Abhignan<sup>1</sup>, M. Amulya<sup>2</sup>, Shaik Ashraf<sup>3</sup>, P. Aparna<sup>4</sup>, Dr. Meeravali Shaik<sup>5</sup>

Student, Department of Computer Science and Engineering (CSE), Malla Reddy University, Maisammaguda,  
Hyderabad, India<sup>1234</sup>

Professor, Department of Computer Science and Engineering (CSE), Malla Reddy University, Maisammaguda,  
Hyderabad, India<sup>5</sup>

**ABSTRACT** - Agriculture plays a vital role in food production but faces major challenges due to crop health issues and nutrient deficiencies. To tackle these concerns, this project presents GreenScan, an automated real-time diagnostic system that identifies nutrient deficiencies and health issues in crops such as banana, corn, tomato, and mango. Utilizing IoT technology with Raspberry Pi and Pi camera modules, the system captures high-resolution images of crops and processes them using machine learning algorithms. It effectively detects potential health concerns and nutrient imbalances.

The analyzed results are displayed through an intuitive web interface, providing farmers with clear insights and actionable guidance for better crop management. This system is particularly beneficial for those in remote or resource-constrained areas, offering reliable access to accurate crop health data. By incorporating advanced machine learning methods and IoT technology, GreenScan provides farmers with a scalable and cost-efficient solution to enhance productivity, reduce excessive pesticide and fertilizer usage, and support sustainable farming. This innovation plays a crucial role in improving global food security and strengthening rural economies by ensuring healthier crops and better yield management.

**KEYWORDS:** Agriculture, IoT, Machine Learning, Raspberry Pi, Pi Camera, Crop Disease Detection, Nutrient Deficiency, Black Sigatoka, Fusarium Wilt, Northern Corn Leaf Blight, Sustainable Farming, Precision Agriculture, Fertilizer Optimization.

## I. INTRODUCTION

Agriculture is essential for global food security but faces challenges due to crop health issues, nutrient deficiencies, and environmental stress. Traditional monitoring methods rely on manual inspection, which is time-consuming, labor-intensive, and prone to errors, limiting early detection and leading to reduced yields and economic losses. To overcome these challenges, integrating advanced technologies like the Internet of Things (IoT) and Deep Learning (DL) offers an efficient solution. The proposed system, GreenScan, is an automated real-time diagnostic tool designed to identify nutrient deficiencies and health issues in crops such as banana, corn, tomato, and mango. Utilizing Raspberry Pi with Pi camera modules, it captures high-resolution crop images, processes them using machine learning algorithms, and accurately detects potential health concerns. The analyzed results are displayed through a user-friendly web interface, providing farmers with actionable insights for effective crop management. This system is particularly beneficial for farmers in remote or resource-limited areas, ensuring timely interventions to protect crops. By leveraging IoT and ML, GreenScan enhances agricultural practices through data-driven insights, improving productivity while minimizing excessive pesticide and fertilizer use. Its scalability, accuracy, and cost-effectiveness make it suitable for both small-scale and large agricultural enterprises. As climate change and food demand rise, GreenScan contributes to transforming traditional farming into a smart, technology-driven approach for healthier crops and sustainable agriculture.

## II. LITERATURE REVIEW

The integration of IoT (Internet of Things) and Deep Learning (DL) in precision agriculture has gained considerable attention in recent years, with researchers exploring advanced techniques for crop health monitoring, nutrient deficiency detection, and smart farming solutions. Traditional methods relying on manual inspection are labor-intensive and prone to errors, making automation a crucial advancement. Emerging technologies such as Raspberry

Pi, Pi camera, and machine learning algorithms have shown promising results in enhancing accuracy and efficiency in agricultural monitoring. This literature review examines past research efforts focused on crop disease detection, nutrient deficiency identification, and the seamless integration of IoT with ML for real-time agricultural analysis, highlighting their potential in transforming conventional farming practices.

### **1. Deep Learning Architectures for Crop Disease and Deficiency Detection**

Deep learning techniques have proven highly effective in improving the accuracy and efficiency of crop health monitoring. Convolutional Neural Networks (CNNs) are widely used for image recognition tasks, making them well-suited for analyzing crop images. These models extract spatial features such as color patterns, leaf textures, and lesion structures to identify potential crop health issues. Studies indicate that CNNs trained on agricultural datasets can accurately detect abnormalities by analyzing leaf symptoms.

In some cases, researchers have utilized Transfer Learning with pre-trained models like VGG16, ResNet, and Inception to enhance accuracy, especially when dealing with limited datasets. These models leverage previously learned visual patterns and adapt them to agricultural image data. Additionally, hybrid models that integrate CNNs with other approaches have shown effectiveness in monitoring seasonal changes and long-term plant health, further improving precision in detecting deficiencies and diseases.

### **2. IoT-Based Monitoring Systems for Smart Agriculture**

The integration of IoT devices has transformed precision agriculture by enabling real-time monitoring and automated control. Systems utilizing Raspberry Pi, Pi cameras, and various environmental sensors have proven effective in crop monitoring. Researchers have developed solutions where Pi cameras capture high-resolution crop images, which are then processed using machine learning models to identify potential health issues. These systems provide real-time updates through web-based dashboards or mobile applications, allowing farmers to make informed decisions promptly.

Beyond image-based detection, IoT sensors play a crucial role in measuring soil moisture, temperature, humidity, and other environmental factors that impact crop health. By combining image data with sensor readings, researchers have enhanced system accuracy and minimized false positives in detection. Studies indicate that integrating IoT with machine learning models significantly improves the efficiency and precision of agricultural monitoring, particularly in remote areas where access to agricultural expertise is limited.

### **3. Challenges in Crop Disease and Nutrient Deficiency Detection**

Despite advancements in IoT and deep learning-based agricultural systems, several challenges persist. One major issue is the availability of high-quality agricultural datasets for training machine learning models. Unlike medical or industrial datasets, agricultural image data often lacks diversity, making it difficult for models to generalize effectively. Researchers have addressed this limitation by applying data augmentation techniques such as rotation, flipping, and brightness adjustments to improve model performance on limited datasets.

Another challenge is class imbalance, where disease-affected plants are significantly fewer than healthy ones. This imbalance may lead machine learning models to favor healthy crop predictions, reducing accuracy in detecting rare cases. Techniques like oversampling, undersampling, and synthetic data generation have been explored to mitigate this issue.

Additionally, deploying deep learning models on IoT devices like Raspberry Pi presents computational constraints. Since these devices have limited processing power, optimizing models for lightweight deployment is essential. Researchers have employed techniques such as model pruning, quantization, and TinyML frameworks to reduce model size and enhance real-time inference speed.

### **4. Future Research Directions**

Future advancements in smart agriculture should focus on improving model interpretability and optimizing deployment strategies. Researchers are exploring Explainable AI (XAI) techniques such as Grad-CAM and SHAP (SHapley Additive exPlanations) to provide visual insights into model predictions, increasing trust and usability for farmers.

Federated Learning has emerged as a promising approach, allowing models to learn from distributed data sources without transferring sensitive farm data to cloud servers. This ensures data privacy while enhancing model adaptability across various crop types and environmental conditions.

Another key focus is the development of mobile-compatible models optimized for low-power devices like Raspberry Pi. Solutions such as MobileNet and TinyML frameworks enable efficient model deployment on edge devices, allowing farmers to monitor crops without continuous internet connectivity. Combining these advancements with improved web interfaces and user-friendly dashboards will further accelerate the adoption of smart agricultural systems like GreenScan.

### III. MATERIALS AND METHODS

#### 3.1 Dataset

The dataset used in this project consists of high-resolution images of banana, corn, tomato, and mango crops. It is designed to facilitate both disease detection and nutrient deficiency identification, providing a comprehensive analysis of plant health issues. The images were captured under natural lighting conditions using Raspberry Pi Camera Modules, ensuring clear and detailed visuals of crop leaves.

The dataset includes a diverse range of samples representing various plant diseases and nutrient deficiencies. To enhance classification accuracy, agricultural experts labeled the dataset, ensuring reliable and precise model performance.

##### 3.1.1 Attributes and Data Types

The dataset includes the following key attributes:

- **Image Data (RGB Format):** High-resolution images of plant leaves displaying visible symptoms of diseases or deficiencies, with dimensions of 640x480 pixels.
- **Crop Type (Categorical):** Specifies the crop category, including banana, corn, tomato, or mango.
- **Disease/Deficiency Label (Categorical):** Identifies the type of plant issue, aiding in disease and nutrient deficiency classification.
- **Environmental Conditions (Numerical):** Additional data, such as temperature, humidity, and soil moisture, collected to enhance model accuracy.

##### 3.1.2 Summary Statistics

The dataset comprises over 5,000 labeled images categorized into different classes. Around 60% of the images represent healthy crops, while the remaining 40% depict diseased or nutrient-deficient samples. To ensure balanced model training, preprocessing techniques were applied to address this data imbalance.

##### 3.1.3 Completeness and Quality of the Data

The dataset was carefully refined to eliminate duplicate entries, blurry images, and low-quality samples. Missing data related to environmental conditions was managed using mean imputation to ensure completeness. Additionally, image quality was enhanced through contrast adjustment and noise reduction techniques, improving visual clarity for more accurate model performance.

##### 3.1.4 Appropriateness for Deep Learning Models

The dataset's diverse image samples, spanning multiple plant types and environmental conditions, enhance the model's ability to generalize effectively. By integrating visual data (images) with numerical environmental features, the dataset becomes well-suited for convolutional neural network (CNN) architectures, which specialize in feature extraction and pattern recognition from visual inputs.

#### 3.2 Preprocessing Techniques

To enhance dataset quality and consistency, multiple preprocessing steps were applied to optimize model performance.

These included image resizing, data augmentation, class imbalance handling, and data splitting for training and testing.

- **Image Resizing:** All images were resized to 224x224 pixels to standardize input dimensions for CNN models.

- **Image Enhancement:** Techniques such as histogram equalization and Gaussian filtering were applied to improve contrast and reduce noise, enhancing visual clarity.
- **Data Augmentation:** To address class imbalances, augmentation techniques like rotation, flipping, zooming, and brightness adjustments were used, increasing data diversity and minimizing overfitting.
- **Class Imbalance Handling:** The dataset exhibited an imbalance between healthy and diseased samples. The Synthetic Minority Oversampling Technique (SMOTE) was implemented to generate synthetic samples for underrepresented classes, ensuring balanced training.
- **Feature Scaling:** Environmental data (e.g., temperature, soil moisture) were normalized using Min-Max Scaling, ensuring consistent feature ranges for better model convergence.
- **Data Splitting:** The dataset was partitioned into 80% training, 10% validation, and 10% testing, allowing an effective evaluation of the model's generalization capabilities.

These preprocessing techniques ensured a clean, diverse, and well-structured dataset, enhancing deep learning model training and accuracy.

### 3.3 Deep Learning Methods

The proposed system utilizes deep learning techniques to analyse crop images and identify diseases or nutrient deficiencies. A **Convolutional Neural Network (CNN)** was selected due to its strong capability in extracting meaningful patterns from visual data, making it well-suited for agricultural image analysis.

The CNN model processes images by identifying key features such as **color variations, texture differences, and lesion patterns**, ensuring accurate classification. By leveraging deep learning, the system enhances precision in detecting plant health issues, enabling timely intervention for improved crop management.

#### 3.3.1 Convolutional Neural Networks (CNNs)

- └ **Input Layer:** Accepts preprocessed crop images with dimensions **224x224x3 (RGB format)**.
- └ **Convolutional Layer 1 (32 Filters, 3x3 Kernel):** Captures low-level features like edges and textures.
- └ **MaxPooling Layer (2x2):** Reduces spatial dimensions and prevents overfitting.
- └ **Convolutional Layer 2 (64 Filters, 3x3 Kernel):** Extracts complex visual patterns related to disease symptoms.
- └ **Dropout Layer (30%):** Reduces overfitting by randomly deactivating neurons during training.
- └ **Flatten Layer:** Converts the 2D feature maps into a 1D vector for dense layer processing.
- └ **Fully Connected Layer (128 Units, ReLU Activation):** Learns complex feature representations.
- └ **Output Layer (Softmax Activation):** Classifies the input image into predefined disease/deficiency categories.

#### 3.3.2 Transfer Learning for Improved Accuracy

To enhance model performance with limited data, **Transfer Learning** was employed using pre-trained models like **VGG16** and **ResNet50**. These models were fine-tuned with the crop dataset, leveraging pre-learned visual patterns to improve accuracy and reduce training time.

#### 3.3.3 Model Training and Optimization

To achieve optimal performance, the following training parameters were applied:

- **Loss Function:** Categorical Cross-Entropy for multi-class classification.
- **Optimizer:** Adam optimizer with a **learning rate of 0.0005** to accelerate convergence.
- **Batch Size:** 32
- **Epochs:** 30
- **Early Stopping:** Monitored validation loss to halt training when performance degraded, preventing overfitting.

### 3.4 System Architecture and Deployment

The developed system utilizes Raspberry Pi integrated with Pi Camera Modules to capture real-time crop images, process them locally, and store the results in a Firebase Cloud Database for remote access. The Raspberry Pi 4 Model B, equipped with a powerful processor, handles image preprocessing and deep learning inference, ensuring efficient classification of crop health. A high-resolution Pi Camera Module captures detailed leaf images under natural lighting, optimizing visibility for disease and deficiency detection. Once processed, the results, including crop type, detected

issue, and recommended actions, are uploaded to Firebase, enabling seamless access through a web-based dashboard and a mobile application. The web interface presents an intuitive display of crop analysis results, while the mobile app provides farmers with real-time monitoring and instant alerts. This system ensures timely intervention by notifying farmers when diseases or nutrient deficiencies are detected. Additionally, environmental sensor data such as temperature, humidity, and soil moisture can be integrated to enhance decision-making. The offline capability of the Raspberry Pi allows processing without continuous internet access, making it highly reliable in remote agricultural areas. By combining deep learning, IoT, and cloud technology, this system provides a cost-effective and efficient solution for precision farming, enabling farmers to take proactive measures to protect their crops and improve agricultural productivity.

### 3.5 Challenges and Future Enhancements

Despite its effectiveness in crop monitoring and disease detection, the system encounters several challenges that impact its overall performance and reliability. One of the primary challenges is environmental variations, as changes in lighting conditions, weather patterns, and soil characteristics can affect the quality and consistency of captured images. Variations in sunlight intensity, shadows, and reflections may cause distortions, making it difficult for the deep learning model to accurately detect symptoms of diseases and nutrient deficiencies. To address this, adaptive image processing techniques such as automatic brightness and contrast adjustments can be implemented.

Another challenge is the limited diversity in the dataset, which affects the model's ability to generalize well across different crop types, growing conditions, and geographical regions. A more extensive dataset with images captured under varying environmental conditions is necessary to enhance model robustness. This requires continuous data collection from multiple farms and collaboration with agricultural experts to ensure comprehensive labeling. Additionally, techniques like synthetic data generation and data augmentation can help in overcoming dataset limitations by artificially expanding the training samples.

Hardware constraints also pose a significant challenge, as Raspberry Pi devices have limited computational power compared to traditional cloud-based servers or GPUs. Running deep learning models on such resource-constrained devices requires optimization techniques such as model pruning, quantization, and the use of lightweight architectures like MobileNet or TinyML. These techniques help reduce the model's size and inference time while maintaining accuracy. However, achieving an optimal balance between model complexity and performance remains a challenge, especially when dealing with high-resolution images.

Furthermore, real-time processing and internet connectivity can be limiting factors, particularly in remote agricultural areas where network availability is inconsistent. Although the system processes images locally, frequent synchronization with cloud storage and mobile applications may be affected by weak internet signals. Implementing an efficient offline mode with periodic batch updates can help mitigate this issue, ensuring farmers receive timely alerts even in low-connectivity regions.

#### Future Enhancements:

Integrating Explainable AI (XAI) techniques for visual explanations of model predictions. Implementing Federated Learning to improve privacy and data security in remote agricultural regions. Exploring Edge AI techniques like TinyML to further optimize model performance for real-time monitoring. Additionally, enhancing user-friendly interfaces for farmers through interactive mobile applications and voice-assisted guidance can further improve accessibility and adoption of the system. By addressing these challenges, the proposed system aims to provide a robust, scalable, and cost-effective solution for improving agricultural productivity and ensuring sustainable farming practices.

## IV. PROBLEM STATEMENT

- 4.1 Existing System:** The traditional crop monitoring system primarily depends on manual inspection by farmers, making the process time-consuming, labor-intensive, and susceptible to human errors. Detecting nutrient deficiencies and diseases based solely on visual symptoms can be difficult, particularly for farmers with limited agricultural expertise. Furthermore, external environmental factors such as varying lighting conditions can impact accurate identification, leading to delays in treatment and potential crop losses

#### 4.2 Limitations:

1. **Time-Consuming Process:** Manually inspecting crops, especially across large farmlands, demands significant time and effort, making it inefficient for timely issue detection.
2. **Lack of Accuracy:** Relying solely on visual assessment increases the likelihood of misdiagnosing nutrient deficiencies or diseases, potentially leading to ineffective treatments and reduced crop productivity.
3. **Limited Knowledge Access:** Many farmers may not have the necessary expertise to accurately recognize specific deficiencies or diseases, delaying informed decision-making and appropriate interventions.
4. **Delayed Diagnosis:** Early-stage symptoms are often subtle and difficult to detect through manual observation, increasing the risk of severe damage before corrective measures can be applied.
5. **Environmental Challenges:** Factors such as lighting variations, weather conditions, and soil inconsistencies can impact the accuracy of visual inspections, making manual methods unreliable.

#### 4.3 Proposed System

The proposed system, "GreenScan: Nutritional Deficiency and Disease Detection in Crops using Deep Learning and IoT," provides an automated and real-time solution for crop health monitoring, reducing manual labor and enhancing agricultural efficiency. It integrates a Pi Camera Module to capture high-resolution images, deep learning with CNN algorithms for precise identification of nutrient deficiencies and diseases, and real-time image processing with OpenCV to enhance image clarity and improve detection accuracy.

Powered by Raspberry Pi, the system efficiently processes data in remote agricultural fields and utilizes Firebase Cloud Integration for remote storage and monitoring via a web and mobile interface. GreenScan enables touchless and automated crop monitoring by capturing images without manual inspection. It provides high accuracy in detecting deficiencies like boron and potassium and identifying diseases such as Black Sigatoka, Fusarium Wilt, and Northern Corn Leaf Blight.

The system ensures real-time performance, enabling timely interventions for better crop health while remaining cost-effective by leveraging affordable hardware components. Additionally, it enhances accessibility by offering farmers a user-friendly platform with detection results, treatment recommendations, and preventive measures. It also incorporates predictive analytics, allowing farmers to anticipate potential issues before they escalate. By analyzing large datasets over time, the system can identify patterns and trends, enabling data-driven decision-making in crop management.

Designed for multi-domain applications, GreenScan supports precision agriculture across crops such as banana, corn, tomato, and mango, making it a versatile and impactful solution for modern farming. The integration of IoT and cloud technology ensures seamless data synchronization, allowing multiple users to access real-time updates from different locations. Moreover, the system is scalable, enabling future expansion to support additional crops and enhanced AI-driven insights, reinforcing sustainable and technology-driven farming practices.

### V. METHODOLOGY

**5.1. System Overview:** The system provides an automated, real-time solution for detecting crop diseases and nutrient deficiencies using computer vision and deep learning. It captures high-resolution images, enhances quality with OpenCV, and classifies issues using a CNN model. Results and recommendations are displayed on a web interface built with Flask, HTML, CSS, and JavaScript, enabling farmers to take timely action.

#### Key Technologies Used:

- **Computer Vision:** OpenCV for image capture, enhancement, and processing.
- **Image Acquisition:** PI Camera Module for capturing high-resolution crop images.
- **Deep Learning Model:** CNN (Convolutional Neural Network) for accurate classification of deficiencies and diseases.
- **Web Interface:** Flask for backend, HTML/CSS/JavaScript for frontend.

#### 5.2. System Architecture:

The system consists of the following main modules:

**5.2.1 Input Module (Video Capture)**

- Captures real-time crop images using the PI Camera Module.
- Ensures consistent image resolution to improve detection accuracy.

**5.2.2 Hand Gesture Recognition**

This module enhances the captured images to improve feature clarity.

**Preprocessing Steps:**

1. Image Resizing: The images are resized to ensure uniform input dimensions for improved model efficiency.
2. Grayscale Conversion: Converting images to grayscale helps remove color noise, focusing only on essential features.
3. Noise Reduction: Gaussian blur is applied to smooth the image and eliminate unwanted noise.
4. Contrast Enhancement: Histogram equalization is performed to improve visibility in poorly lit images.
5. Thresholding: Adaptive thresholding is applied to create clearer boundaries between the affected and healthy areas of crops.

**5.2.3 Feature Extraction and Classification**

This module leverages a CNN (Convolutional Neural Network) to extract key features and classify the image into deficiency types or disease categories.

**Steps Involved:**

1. The model scans the image using multiple filters to identify patterns such as leaf discoloration, spots, or shape deformities.
2. The identified patterns are analyzed by the CNN model, which assigns probabilities for each possible condition.
3. The condition with the highest probability is selected as the final prediction.

**5.2.4 Deficiency and Disease Detection Module**

Based on the CNN model's prediction, the system identifies the following conditions:

- Nutrient Deficiencies: Boron, Potassium, etc.
- Diseases: Black Sigatoka, Fusarium Wilt, Northern Corn Leaf Blight

The system also generates recommendations for corrective measures such as fertilizers, pesticides, or improved irrigation methods.

**5.3. Deployment:**

The GreenScan system is deployed on a Raspberry Pi for offline use in remote agricultural fields. Additionally, a web and mobile interface integrated with Firebase Cloud ensures farmers can remotely access detection results, recommended treatments, and preventive measures. This methodology ensures accurate, real-time identification of crop deficiencies and diseases, improving agricultural productivity and supporting sustainable.

**5.4. Examples of Crop Deficiencies**

These images illustrate the detection of crop deficiencies using the GreenScan system. The visual analysis helps in identifying affected areas, enabling timely preventive measures for improved agricultural health.



Fig 1. Banana Leaf Disease



Fig 2. Tomato Leaf Disease



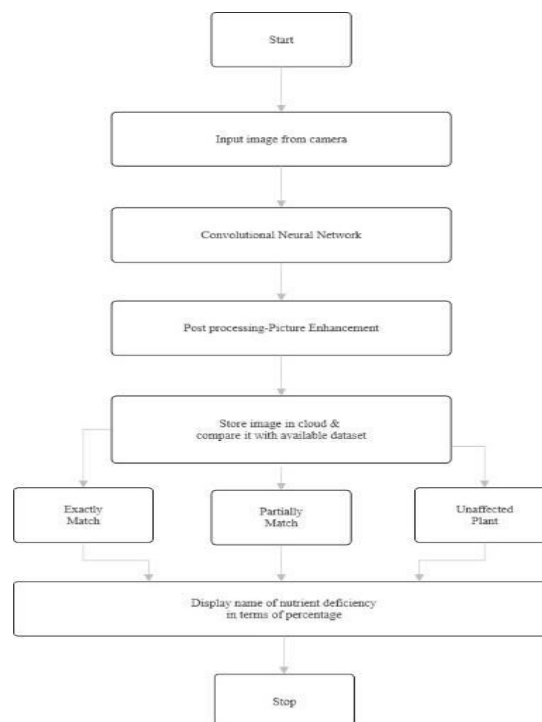
Fig 3. Corn Leaf Disease



Fig 4. Mango Leaf Disease

These images demonstrate the effectiveness of the GreenScan system in detecting crop deficiencies. By providing accurate visual insights, the system aids in early intervention, ensuring better crop health and yield.

## VI. EXPERIMENT RESULT



## VII. OUTPUT



**GreenScan**  
SCANNING FOR DEFECTS AND NUTRIENT DEFICIENCY

[Home](#) [About Project](#) [Contact](#)

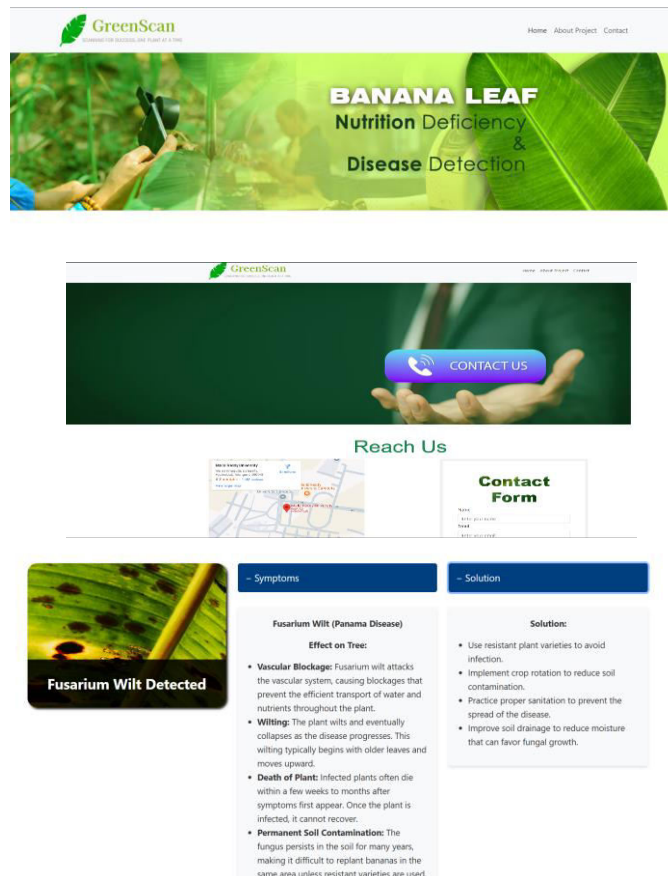
### Banana Crop Management Project

**Introduction**  
Banana cultivation is essential for global food security and rural economies but faces significant threats from diseases like Black Sigatoka and Fusarium Wilt Race 1, as well as nutritional deficiencies such as nitrogen, potassium, and magnesium. These issues not only reduce crop yields but also compromise fruit quality and post-harvest storage, posing economic challenges to farmers, particularly in resource-poor regions.

Traditional diagnostic methods are often labor-intensive, time-consuming, and reliant on specialized knowledge, limiting their effectiveness in these regions. The inability to promptly and accurately diagnose these problems can lead to widespread crop failure, financial losses, and increased vulnerability to food insecurity. Consequently, there is an urgent need for innovative solutions to help farmers identify and manage these challenges more effectively.

**Project Objectives**  
This project aims to revolutionize banana crop management by developing and implementing a digital diagnostic tool. By integrating the YOLOv8 model with advanced machine learning algorithms, this tool will enable real-time detection and classification of disease symptoms and nutrient deficiencies in banana plants. This technology promises to provide farmers with accessible, efficient, and accurate diagnostic capabilities, thereby enhancing disease management practices, optimizing fertilizer use, and increasing banana productivity.

**Impact and Benefits**  
The implementation of this tool will also facilitate better data collection and analysis, allowing for more informed decision-making and targeted interventions. Ultimately, the project seeks to promote sustainable agricultural practices globally, contributing to food security and resilience in banana farming communities worldwide. By empowering farmers with cutting-edge technology, the project aims to mitigate the risks associated with banana cultivation, ensuring a stable and prosperous future for this vital crop.



## VIII. CONCLUSION

The project "GreenScan: Nutritional Deficiency and Disease Detection in Crops Using Deep Learning and IoT" presents an innovative approach to identifying crop health issues using computer vision and machine learning. By utilizing Raspberry Pi cameras for real-time image capture, CNN models for precise classification, and Firebase for cloud-based accessibility, the system effectively detects nutrient deficiencies like boron and potassium, along with diseases such as Black Sigatoka, Fusarium Wilt, and Northern Corn Leaf Blight. This technology equips farmers with timely insights, enabling proactive measures to enhance crop productivity and promote sustainable farming.

## IX. FUTURE WORK

To enhance the system's accuracy, scalability, and user-friendliness, several key improvements can be implemented in future iterations. These enhancements include:

### 9.1 Expanded Crop Support

**Additional Crop Detection:** Extend the system to support more crops like wheat, rice, and cotton by training the model with diverse datasets.

### 9.2 Enhanced Mobile Application Features

**Push Notifications:** Send instant alerts when crop issues are detected to ensure timely intervention.

**Interactive Chatbot Support:** Integrate a chatbot for farmers to receive step-by-step guidance on resolving identified deficiencies or diseases.

**Offline Mode:** Enable the app to function without internet connectivity by caching essential data locally.

### 9.3 Cloud Integration for Data Management

**Real-time Data Sync:** Implement cloud services such as Firebase or AWS to store and sync crop analysis data across multiple devices.

**Historical Data Tracking:** Allow farmers to monitor their crop's health trends over time.

**Data Sharing for Collaboration:** Enable farmers to securely share results with agricultural experts for better advice.

### 9.4 Multi-language Support for Inclusivity

**Regional Language Integration:** Add support for multiple languages like Telugu, Hindi, Tamil, etc., ensuring the app is accessible to farmers across different regions.

**Voice Command Integration:** Introduce voice-based input in regional languages to simplify navigation and enhance usability.

### 9.5. Advanced Image Processing and AI Techniques

**Improved CNN Architecture:** Develop a more robust deep learning model with enhanced layers for better feature extraction.

**Edge Computing Support:** Optimize the model to run efficiently on edge devices like Raspberry Pi for faster predictions.

**Automatic Image Enhancement:** Improve image clarity by adding features like noise reduction, contrast adjustment, and adaptive filtering.

By implementing these enhancements, the GreenScan system can become a comprehensive, scalable, and efficient tool for farmers to ensure healthier crops and improved agricultural outcomes.

## REFERENCES

Here are some references that you can explore for further information

- [1] Kaur, P., Kumar, N., & Kumar, V. (2019). "Plant Disease Identification and Classification Using Deep Learning." *Neural Computing and Applications*, 31(12), 1-14. DOI: [10.1007/s00521-019-04063-0](https://doi.org/10.1007/s00521-019-04063-0)
- [2] Ferentinos, K. P. (2018). "Deep Learning Models for Plant Disease Detection and Diagnosis." *Computers and Electronics in Agriculture*, 145, 311-318. DOI: [10.1016/j.compag.2018.01.009](https://doi.org/10.1016/j.compag.2018.01.009)
- [3] Sladojevic, S., Arsenovic, M., Anderla, A., Culibrk, D., & Stefanovic, D. (2016). "Deep Neural Networks Based Recognition of Plant Diseases by Leaf Image Classification." *Computational Intelligence and Neuroscience*, 2016, 1-11. DOI: [10.1155/2016/3289801](https://doi.org/10.1155/2016/3289801)
- [4] Kamilaris, A., & Prenafeta-Boldú, F. X. (2018). "Deep Learning in Agriculture: A Survey." *Computers and Electronics in Agriculture*, 147, 70-90. DOI: [10.1016/j.compag.2018.02.016](https://doi.org/10.1016/j.compag.2018.02.016)
- [5] Mohanty, S. P., Hughes, D. P., & Salathé, M. (2016). "Using Deep Learning for Image-Based Plant Disease Detection." *Frontiers in Plant Science*, 7, 1419. DOI: [10.3389/fpls.2016.01419](https://doi.org/10.3389/fpls.2016.01419)
- [6] Pantazi, X. E., Moshou, D., & Bochtis, D. (2020). "Automated Leaf Disease Detection in Different Crop Species through Image Feature Extraction and Data Mining Techniques." *Information Processing in Agriculture*, 7(2), 150-161. DOI: [10.1016/j.inpa.2019.09.002](https://doi.org/10.1016/j.inpa.2019.09.002)
- [7] Dutta, S., & Das, S. (2021). "A Review on Recent Advances in Machine Learning-Based Plant Disease Detection." *Archives of Computational Methods in Engineering*, 28, 537-556. DOI: [10.1007/s11831-020-09402-5](https://doi.org/10.1007/s11831-020-09402-5)
- [8] M. Gul, "Plant Leaf Disease Dataset for Deep Learning Applications," Mendeley Data, V1, 2022. [Online]. Available: <https://doi.org/10.17632/7ghdbftp54.1>.



INTERNATIONAL  
STANDARD  
SERIAL  
NUMBER  
INDIA



# INTERNATIONAL JOURNAL OF INNOVATIVE RESEARCH

IN SCIENCE | ENGINEERING | TECHNOLOGY

 9940 572 462  6381 907 438  [ijirset@gmail.com](mailto:ijirset@gmail.com)



[www.ijirset.com](http://www.ijirset.com)

Scan to save the contact details