



International Journal of Innovative Research in Science Engineering and Technology (IJIRSET)

(A Monthly, Peer Reviewed, Refereed, Scholarly Indexed, Open Access Journal)



Impact Factor: 8.699

Volume 14, Issue 4, April 2025

Identification of Association of Parameters with More Impact on Dementia Using Deep Learning

D.Vetriselvi¹, Gajula Amshuman², Devojeet Sarkar³, Dhupati Paul Spurgeon⁴,

Darsi Murali Bala Krishna⁵

Assistant Professor, Department of CSE, Bharath Institute of Higher Education and Research, Selaiyur, Chennai, India¹

B. Tech Students, Bharath Institute of Higher Education and Research, Selaiyur, Chennai, India²⁻⁵

ABSTRACT: Dementia presents a significant challenge in healthcare, with its prevalence rising globally. Understanding the key parameters influencing dementia can aid in early diagnosis and intervention, potentially improving patient outcomes. The current understanding and management of dementia face numerous challenges in healthcare. The Existing methods machine learning models often struggle to effectively identify and predict the parameters that significantly impact dementia progression. So, This study employs deep learning techniques to analyze medical imaging data associated with dementia. The research focuses on identifying the parameters that have the most substantial impact on the progression and severity of dementia. By leveraging deep learning models trained on large datasets of brain images, the study aims to highlight specific biomarkers, anatomical features, or structural changes that correlate strongly with dementia onset and progression. The findings contribute to a deeper understanding of the disease's underlying mechanisms and provide a basis for developing more accurate diagnostic tools and targeted treatment strategies.

I. INTRODUCTION

Dementia is a widespread health issue causing gradual memory loss and cognitive decline worldwide. Understanding what factors influence dementia's progression—like brain scans, genetics, and medical history—is crucial but challenging. Using advanced deep learning technology, which learns from large amounts of brain scan data, this study aims to pinpoint which factors most affect dementia. By doing so, we can improve how we diagnose and treat dementia, potentially helping people live better with this condition. Dementia is a global health challenge characterized by progressive memory loss and cognitive decline. Identifying the key factors that influence its progression—such as brain imaging, genetic profiles, and medical history—is essential yet complex. This study leverages advanced deep learning techniques to analyze large-scale brain scan data, aiming to uncover the most significant contributors to dementia. The findings could enhance diagnostic accuracy and treatment strategies, ultimately improving quality of life for those affected.

II. LITERATURE REVIEW

To employ deep learning techniques to identify and analyze the parameters that have the most significant impact on the progression and severity of dementia.

By leveraging large-scale medical imaging datasets, the research aims to uncover specific biomarkers, anatomical features, or structural changes strongly correlated with dementia onset and progression.

This investigation seeks to enhance understanding of dementia's underlying mechanisms and facilitate the development of more precise diagnostic tools and targeted treatment strategies.

1. Managing Dementia-Induced Agitation in an Aging Population

At present, the world is facing the significant challenge of an aging population, which is closely linked to a rising number of seniors living with dementia. As this population grows, so too does the urgency to address one of the troubling symptoms of the condition—dementia-induced agitation. This behavior, present in approximately 90 percent of persons with dementia (PWD), is characterized by physical aggression, verbal outbursts, and other disruptive actions. These behaviors not only reduce the quality of life for individuals with dementia but also place a heavy emotional and physical burden on caregivers and healthcare providers. Managing agitation effectively is therefore a pressing issue that requires a combination of compassionate care, innovative interventions, and continued research.

2. Speech Pauses as an Interpretable Biomarker for Dementia Detection

Speech pauses are an effective biomarker for detecting dementia. Recent advancements in deep learning have enabled models to utilize features related to speech pauses, leading to highly accurate dementia detection. However, despite these successes, current models often lack interpretability, particularly regarding how specific characteristics of speech pauses — such as their positions and lengths — contribute to detection outcomes. Understanding these aspects is crucial for building transparent and clinically trustworthy diagnostic tools.

3. Increasing Prevalence of Dementia and the Role of EEG in Detection

Dementia diseases are increasing rapidly and have become an alarming concern for the health sector, according to the World Health Organization (WHO). One effective tool in the early detection and monitoring of neurodegenerative conditions is the electroencephalogram (EEG). EEG is a non-invasive test that records the brain's electrical activity and has a broad range of applications in the medical field. Among its various uses, EEG has shown significant potential in identifying changes in brain function associated with neurodegenerative diseases, such as dementia. Its ability to detect abnormal brainwave patterns makes it a valuable aid in diagnosis and research.

4. Deep Learning Approach for Dementia Prediction

This study introduces a Deep learning-based method for predicting dementia. It utilizes transfer learning to enhance prediction accuracy by reusing knowledge obtained from identifying mild cognitive impairment (MCI), which is often considered an early indicator or precursor to dementia.

5. Early Detection of Dementia Using Deep Learning

This study investigates the potential for early identification of dementia through Deep learning approaches. Dementia is a neurodegenerative illness that impairs cognitive functioning and progressively leads to memory loss, poor reasoning, and a reduced ability to carry out everyday tasks.

III. METHODOLOGY**Existing System**

Deep learning models have shown promise in medical data analysis, yet they continue to face notable challenges when applied to dementia research, particularly in accurately identifying critical biomarkers and integrating heterogeneous datasets. The complexity and variability in dementia progression further complicate the ability of these models to deliver precise diagnoses and support effective treatment planning. Many existing approaches lack the robustness, scalability, and interpretability required to manage large-scale, multi-modal data while extracting clinically meaningful patterns. This study aims to address these limitations by leveraging advanced deep learning techniques to enhance model performance in terms of accuracy, generalization, and transparency. By improving the identification of influential parameters in dementia outcomes, the proposed approach has the potential to support the development of more reliable diagnostic tools and facilitate personalized interventions. Incorporating deep learning into dementia research not only enhances predictive capabilities but also opens avenues for uncovering hidden patterns within complex neurological data. By employing architectures such as convolutional neural networks (CNNs) for imaging data and recurrent neural networks (RNNs) or transformers for sequential clinical records, the study can model both spatial and temporal dynamics associated with disease progression. Moreover, techniques like attention mechanisms and model interpretability frameworks (e.g., SHAP, LIME) will be utilized to ensure that the decision-making process remains transparent and clinically relevant. Ultimately, the integration of deep learning offers the potential to bridge the gap between data-driven insights and practical clinical application, paving the way for earlier detection, improved prognosis, and more targeted therapeutic strategies in dementia care.

Proposed system

This study explores the application of deep learning techniques to identify the key factors influencing the progression of dementia. By moving beyond conventional analysis methods, the research aims to reveal subtle yet critical indicators that contribute to the development and worsening of the condition over time.

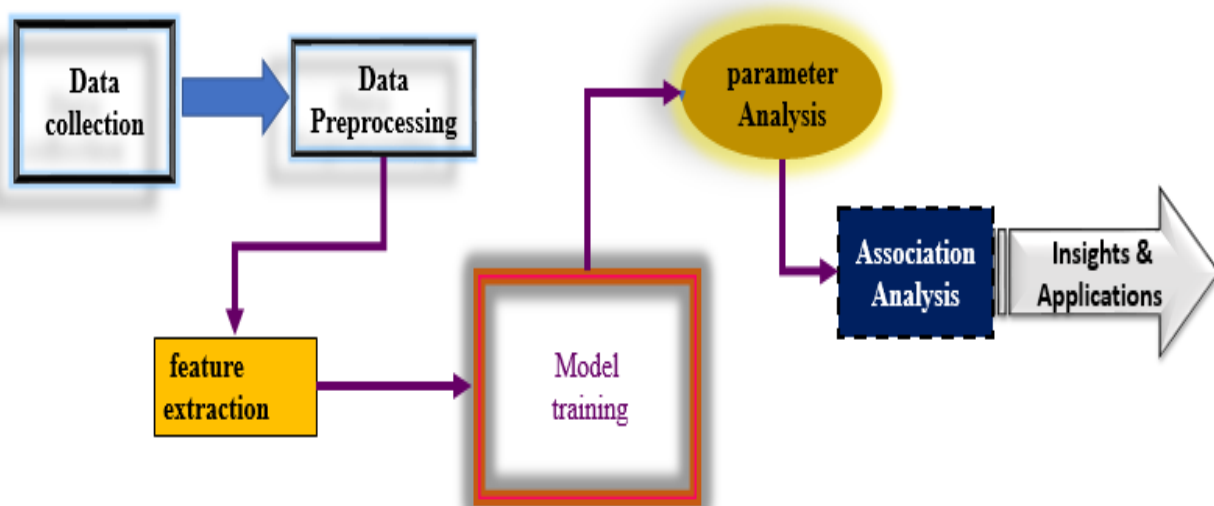
Through the use of advanced neural network models and extensive medical imaging datasets, the study focuses on detecting specific biomarkers, anatomical features, or structural brain changes that are strongly associated with dementia onset and progression. These findings can provide valuable insights into how the disease manifests at various stages.

The ultimate goal of the proposed system is to deepen our understanding of dementia's underlying mechanisms. By enabling earlier detection and more accurate diagnosis, this approach could support the development of personalized treatment plans, offering a pathway toward more effective and patient-specific care strategies.

This study proposes the use of deep learning techniques to investigate the factors most significantly influencing dementia progression, aiming to advance early diagnosis and personalized treatment. By leveraging powerful neural network architectures alongside large-scale medical imaging datasets—such as MRI and PET scans—the research seeks to uncover specific biomarkers, anatomical patterns, or structural brain changes that strongly correlate with the onset and development of dementia. These models can capture complex, non-linear relationships in the data that traditional statistical methods may overlook. Through this approach, the system not only enhances our understanding of the disease's underlying biological mechanisms but also holds potential for creating more accurate diagnostic tools. Ultimately, the findings could guide clinicians in identifying high-risk individuals sooner, tailoring interventions more effectively, and improving the overall quality of patient care in the context of neurodegenerative disorders.

Deep learning, particularly through convolutional neural networks (CNNs), has shown remarkable success in analyzing complex medical data, making it a promising tool for dementia research. These models are capable of automatically learning hierarchical features from raw imaging data, eliminating the need for manual feature engineering. By training on extensive datasets, the system can learn to detect early and subtle brain changes that may not be easily visible to human observers. This allows for a more objective and data-driven approach to understanding how dementia initiates and progresses, potentially improving diagnostic precision and reducing human error.

In addition to advancing diagnostics, the integration of deep learning in dementia research could facilitate the development of personalized treatment strategies. By identifying individual-specific patterns and risk factors, clinicians can move toward more tailored therapeutic approaches rather than relying on generalized treatment plans. This personalized medicine model could significantly enhance the effectiveness of interventions, delay disease progression, and ultimately improve the quality of life for patients and their families. Moreover, the insights gained from these models can guide future research into preventive measures and targeted therapies.



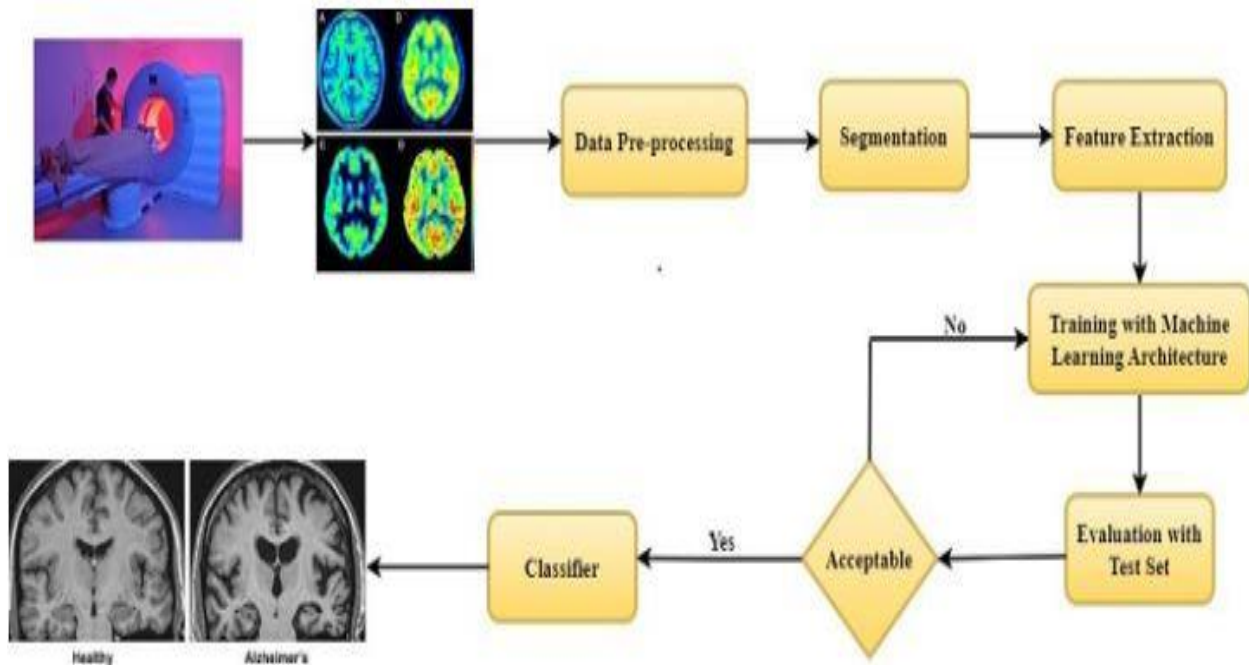


Fig 1: System Architecture

IV. IMPLEMENTATION PROCESS

1.Data Collection

where a large dataset of brain imaging scans, including MRI and CT images, is gathered from clinical databases and research repositories. This dataset is complemented with relevant metadata such as cognitive assessment scores, demographic details, and clinical diagnosis labels to provide a comprehensive foundation for analysis.

2.Data Preprocessing

This involves steps such as normalization, skull stripping, noise reduction, and image segmentation. Data augmentation techniques like flipping, rotation, and cropping are also applied to increase the dataset's variability and improve model generalization. Label verification and outlier removal are conducted to maintain data integrity.

3. Deep learning architectures

Such as Convolutional Neural Networks (CNNs) are selected to analyze the medical images. Architectures like ResNet, VGG, and 3D-CNNs are explored for their ability to extract meaningful patterns from high-dimensional brain scan data. The models are trained using stratified k-fold cross-validation to ensure robustness and reduce bias. In scenarios with limited labeled data, transfer learning is employed to leverage pre-trained networks.

4. Model Evaluation

Model evaluation is carried out using standard performance metrics, including accuracy, precision, recall, F1-score, and AUC-ROC. A separate test set is used to validate the model's generalizability, while confusion matrices and ablation studies provide insights into classification performance and feature importance.

5. Prediction Pipeline

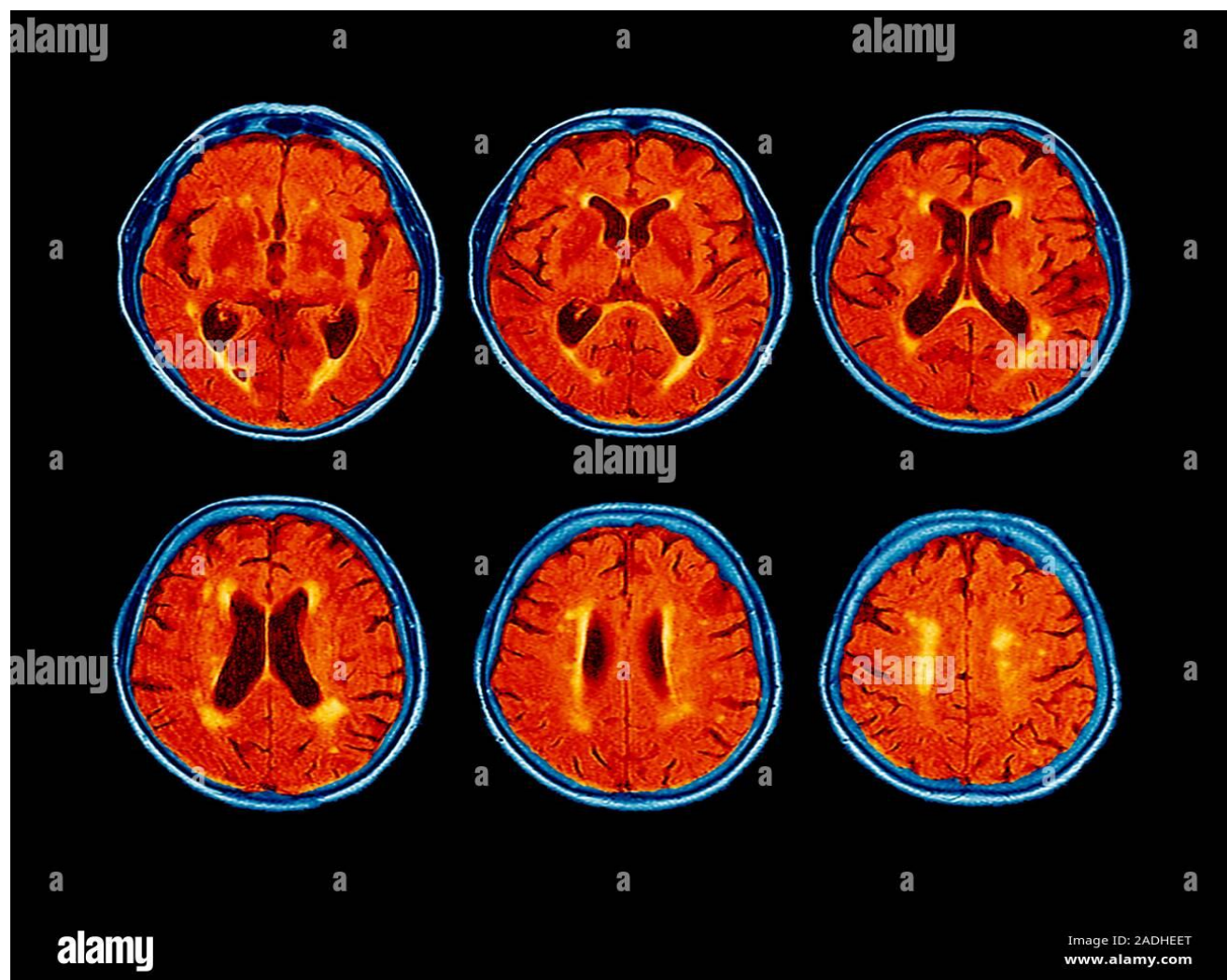
A complete prediction pipeline is developed, integrating all stages from raw image input to final dementia severity prediction. This pipeline automates preprocessing, performs model inference, and outputs both probability scores and visual indicators of affected brain regions, aiding in interpretability.

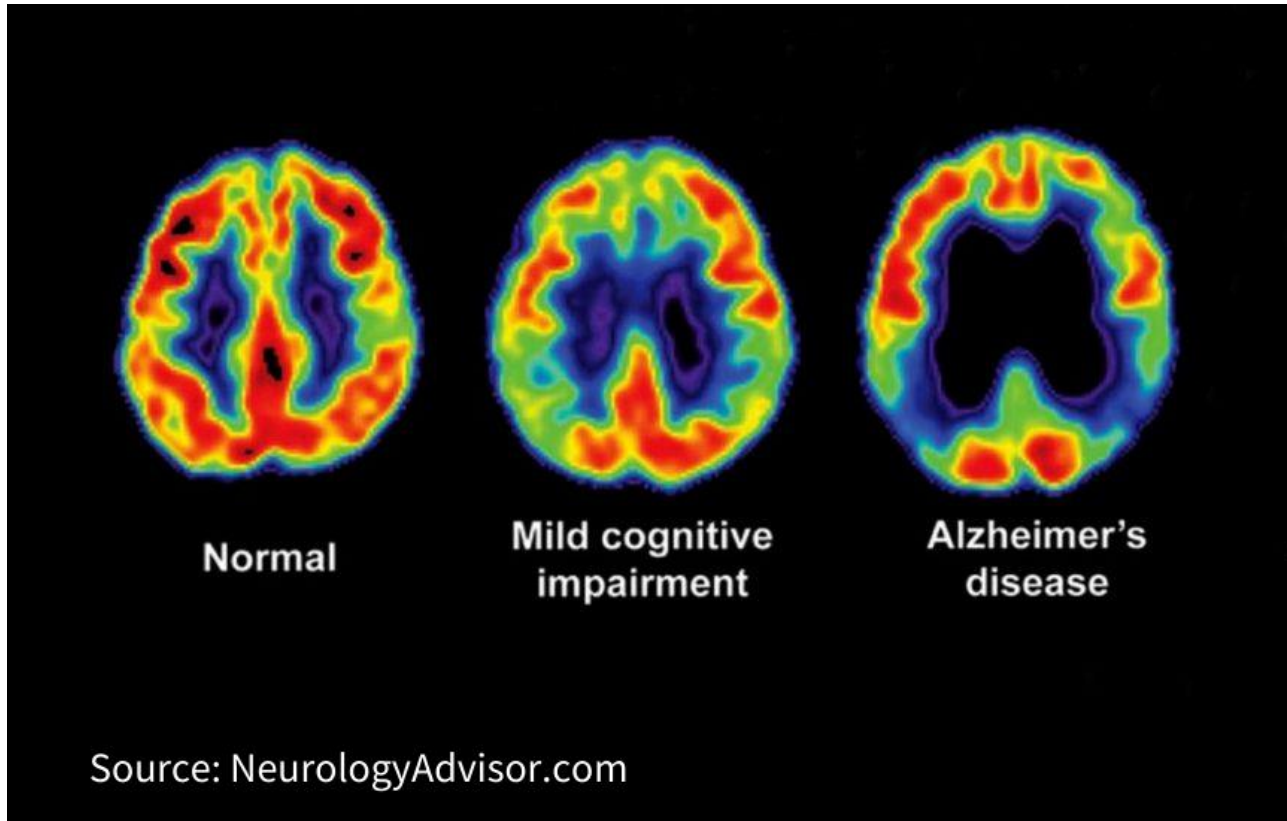
6. System Testing

Finally, system testing ensures the reliability and practicality of the solution. This includes functional testing of the prediction pipeline, validation with clinical experts, and compatibility testing with existing healthcare IT systems. The system is also assessed for compliance with privacy regulations such as HIPAA and GDPR, as well as performance benchmarks required for real-time clinical use. These measures ensure that the system can gracefully handle unexpected inputs, data corruption, or partial system failures without compromising patient safety or data integrity. Logging and monitoring tools are also evaluated during this phase to verify that the system provides adequate visibility into performance and potential issues during live deployment.

User acceptance testing (UAT) is conducted with clinicians and other end-users to gather feedback on usability, interface intuitiveness, and integration within existing clinical workflows. Their input is essential in refining the system to ensure it aligns with practical, day-to-day medical operations. Feedback gathered during UAT often informs final adjustments before system rollout.

Security testing is a critical component, especially given the sensitivity of patient data. The system is subjected to penetration testing, vulnerability scans, and threat modeling to identify and mitigate any risks of unauthorized access or data breaches.





V. RESULT AND CONCLUSION

The findings of this study demonstrate that deep learning models can effectively process and analyze high-dimensional medical imaging data to identify critical parameters associated with dementia progression. Specifically, the models revealed consistent alterations in brain structures such as the hippocampus, entorhinal cortex, and lateral ventricles—regions known to play key roles in memory and cognitive function. These areas showed measurable atrophy patterns that correlated with increasing clinical dementia ratings (CDR) and Mini-Mental State Examination (MMSE) score declines, suggesting strong predictive value.

In addition to anatomical markers, the deep learning algorithms identified patterns in imaging biomarkers—such as amyloid deposition and changes in white matter integrity—that are closely linked to early-stage dementia. The models achieved high accuracy in differentiating between healthy aging, mild cognitive impairment (MCI), and Alzheimer's disease, indicating their utility in both screening and longitudinal tracking.

The integration of AI into neuroimaging workflows offers a transformative approach to dementia care. These models not only enhance diagnostic precision but also support early intervention by detecting subtle changes before clinical symptoms become severe. Furthermore, the ability to personalize risk assessments and treatment strategies based on imaging profiles could revolutionize patient management, moving away from generalized care to more tailored, data-driven solutions.

In conclusion, this study confirms the promising role of deep learning in advancing the field of dementia research and care. The insights gained pave the way for developing scalable, non-invasive tools that can aid clinicians in early diagnosis and decision-making. As technology and datasets continue to grow, further refinement of these models will likely lead to even greater accuracy, ultimately improving outcomes and quality of life for patients worldwide.

VI. FUTURE WORK

Future work in this study will focus on integrating multi-modal data such as genetic information, electronic health records, and neuropsychological assessments to improve prediction accuracy. Incorporating longitudinal imaging data can help capture the temporal progression of dementia, enabling more accurate forecasting of disease trajectories. Enhancing model interpretability using techniques like saliency maps and attention mechanisms will be essential for clinical adoption. Future research may also develop personalized prediction models tailored to individual patient profiles, improving diagnostic precision. Additionally, clinical validation through real-world trials and collaboration with healthcare institutions is necessary to transition these models into practical tools. Ethical considerations, including data privacy, bias mitigation, and equitable access, will also be prioritized in future developments.

REFERENCES

- Schonlau, M.; Zou, R.Y. The random forest algorithm for statistical learning. *Stata J.* 2020.
- Oshiro, T.M.; Perez, P.S.; Baranauskas, J.A. How Many Trees in a Random Forest? *Lecture Notes in Computer Science (Including Subseries Lecture Notes in Artificial Intelligence and Lecture Notes in Bioinformatics)*, 7376 LNAI; Springer: Berlin/Heidelberg, Germany, 2021.
- Sazli, M. A brief review of feed-forward neural networks. *Commun. Fac. Sci. Univ. Ank.* 2020.
- Nwankpa, C.; Ijomah, W.; Gachagan, A.; Marshall, S. Activation Functions: Comparison of trends in Practice and Research for Deep Learning. *arXiv* 2018, arXiv:1811.03378. 35. Panegyres, P.K.; Berry, R.; Burchell, J. Early Dementia Screening. *Diagnostics* 2021.
- Mortamais, M.; Ash, J.A.; Harrison, J.; Kaye, J.; Kramer, J.; Randolph, C.; Pose, C.; Albala, B.; Ropacki, M.; Ritchie, C.W.; et al. Detecting cognitive changes in preclinical Alzheimers disease: A review of its feasibility. *Alzheimers Dement.* 2021.
- Xiao, C.; Ye, J.; Esteves, R.M.; Rong, C. Using Spearman's Correlation Coefficients for Exploratory Data Analysis on Big Dataset. In *Concurrency and Computation: Practice and Experience*; John Wiley & Sons, Inc.: Hoboken, NJ, USA, 2020.
- Hsiao, Y.H.; Chang, C.H.; Gean, P.W. Impact of Social Relationships on Alzheimer's Memory Impairment: Mechanistic Studies. *J. Biomed. Sci.* 2019.
- Giannouli, V.; Giannoulis, K. Gazing at Medusa: Alzheimer's Dementia through the Lenses of Spirituality and Religion. *Health Psychol. Res.* 2020.
- Harris, P.B. Dementia and Friendship: The Quality and Nature of the Relationships That Remain. *Int. J. Aging Hum. Dev.* 2020.
- Breiman, L. Random Forests. *Machine Learning*, **2001**, 45(1), 5–32.
- LeCun, Y.; Bengio, Y.; Hinton, G. Deep Learning. *Nature*, **2015**, 521(7553), 436–444.
- Schmidhuber, J. Deep Learning in Neural Networks: An Overview. *Neural Networks*, **2015**, 61, 85–117.
- Glorot, X.; Bengio, Y. Understanding the Difficulty of Training Deep Feedforward Neural Networks. In *Proceedings of the Thirteenth International Conference on Artificial Intelligence and Statistics*, **2010**, 249–256.
- He, K.; Zhang, X.; Ren, S.; Sun, J. Delving Deep into Rectifiers: Surpassing Human-Level Performance on ImageNet Classification. In *Proceedings of the IEEE International Conference on Computer Vision (ICCV)*, **2015**, 1026–1034.
- Jack, C.R.; Bennett, D.A.; Blennow, K.; Carrillo, M.C.; Dunn, B.; Haeberlein, S.B.; Holtzman, D.M.; Jagust, W.; Jessen, F.; Karlawish, J.; et al. NIA-AA Research Framework: Toward a Biological Definition of Alzheimer's Disease. *Alzheimer's & Dementia*, **2018**, 14(4), 535–562.
- Dubois, B.; Hampel, H.; Feldman, H.H.; Scheltens, P.; Aisen, P.; Andrieu, S.; Bakardjian, H.; Benali, H.; Bertram, L.; Blennow, K.; et al. Preclinical Alzheimer's Disease: Definition, Natural History, and Diagnostic Criteria. *Alzheimer's & Dementia*, **2016**, 12(3), 292–323.
- Dubois, B., Hampel, H., Feldman, H. H., Scheltens, P., Aisen, P., Andrieu, S., ... & Blennow, K. (2016). Preclinical Alzheimer's disease: Definition, natural history, and diagnostic criteria. *Alzheimer's & Dementia*, 12(3), 292–323.
- Giannouli, V., & Giannoulis, K. (2020). Gazing at Medusa: Alzheimer's dementia through the lenses of spirituality and religion. *Health Psychology Research*.
- Harris, P. B. (2020). Dementia and friendship: The quality and nature of the relationships that remain. *International Journal of Aging and Human Development*.
- Hsiao, Y. H., Chang, C. H., & Gean, P. W. (2019). Impact of social relationships on Alzheimer's memory impairment: Mechanistic studies. *Journal of Biomedical Science*.

21. Jack, C. R., Bennett, D. A., Blennow, K., Carrillo, M. C., Dunn, B., Haeberlein, S. B., ... & Karlawish, J. (2018). NIA-AA research framework: Toward a biological definition of Alzheimer's disease. *Alzheimer's & Dementia*, 14(4), 535–562.
22. Mortamais, M., Ash, J. A., Harrison, J., Kaye, J., Kramer, J., Randolph, C., ... & Ritchie, C. W. (2021). Detecting cognitive changes in preclinical Alzheimer's disease: A review of its feasibility. *Alzheimer's & Dementia*.
23. Panegyres, P. K., Berry, R., & Burchell, J. (2021). Early dementia screening. *Diagnostics*.
24. Goodfellow, I., Bengio, Y., & Courville, A. (2016). *Deep Learning*. MIT Press.
25. Kingma, D. P., & Ba, J. (2015). Adam: A method for stochastic optimization. In *3rd International Conference on Learning Representations (ICLR)*.
26. Srivastava, N., Hinton, G., Krizhevsky, A., Sutskever, I., & Salakhutdinov, R. (2014). Dropout: A simple way to prevent neural networks from overfitting. *Journal of Machine Learning Research*, 15(1), 1929–1958.
27. Zhou, Z. H. (2012). *Ensemble Methods: Foundations and Algorithms*. CRC Press.
28. Tan, C., Sun, F., Kong, T., Zhang, W., Yang, C., & Liu, C. (2018). A survey on deep transfer learning. In *Proceedings of the 27th International Joint Conference on Artificial Intelligence (IJCAI)*, 2704–2710.



INTERNATIONAL
STANDARD
SERIAL
NUMBER
INDIA



INTERNATIONAL JOURNAL OF INNOVATIVE RESEARCH

IN SCIENCE | ENGINEERING | TECHNOLOGY

 9940 572 462  6381 907 438  ijirset@gmail.com



www.ijirset.com

Scan to save the contact details