



International Journal of Innovative Research in Science Engineering and Technology (IJIRSET)

(A Monthly, Peer Reviewed, Refereed, Scholarly Indexed, Open Access Journal)



Impact Factor: 8.699

Volume 14, Issue 4, April 2025

Machine Learning based Crop Recommendation System

G Hariharan, M Rajesh, K.Sudhaakar

B. Tech Student, Bharath Institute of Higher Education and Research, Selaiyur, Chennai, Tamil Nadu, India

B. Tech Student, Bharath Institute of Higher Education and Research, Selaiyur, Chennai, Tamil Nadu, India

Assistant professor, Bharath Institute of Higher Education and Research, Selaiyur, Chennai, Tamil Nadu, India

ABSTRACT: The Crop Recommendation System is a machine learning-based solution developed to assist farmers in selecting the most suitable crop for cultivation based on a combination of soil properties and climatic factors. Leveraging data-driven algorithms like Decision Tree, Random Forest, and Support Vector Machine (SVM), the system analyzes input features such as Nitrogen (N), Phosphorus (P), Potassium (K), temperature, humidity, rainfall, and soil pH to provide accurate crop suggestions. The system is deployed as a Flask web application, enabling real-time crop recommendations through a user-friendly interface. This solution enhances agricultural productivity, promotes efficient land use, and empowers farmers with scientific decision-making tools, marking a significant step forward in precision agriculture.

KEYWORDS: Crop Recommendation, Machine Learning, Agriculture, Decision Tree, Random Forest, Support Vector Machine (SVM), Smart Farming.

I. INTRODUCTION

Agriculture plays a pivotal role in the global economy and food security, particularly in developing nations where a large segment of the population relies on farming for their livelihood. One of the major challenges in agriculture is selecting the most appropriate crop for cultivation under specific environmental and soil conditions. Traditionally, this decision has been based on farmers' experience, intuition, or conventional agricultural calendars. However, with the rapid changes in climate, soil degradation, and variability in regional conditions, such traditional methods often lead to inconsistent and inefficient crop yields.

In recent years, the integration of **Artificial Intelligence (AI)** and **Machine Learning (ML)** into agriculture has paved the way for intelligent systems that can revolutionize farming practices. Machine learning techniques have demonstrated promising results in various agricultural domains, including yield prediction, disease detection, irrigation scheduling, and crop recommendation. The **Crop Recommendation System** proposed in this project harnesses the power of machine learning to recommend optimal crops by analyzing a diverse range of parameters such as soil nutrients (**Nitrogen, Phosphorus, Potassium**), soil pH, rainfall, temperature, and humidity.

This system employs classification algorithms such as **Decision Tree**, **Random Forest**, and **Support Vector Machine (SVM)** to process and learn from historical agricultural datasets. These algorithms were chosen for their high accuracy, robustness, and interpretability in classification tasks involving heterogeneous data. The trained model is integrated into a **Flask-based web application**, providing an accessible interface for users to input parameters and receive crop recommendations in real-time.

The aim of this project is not only to assist farmers in selecting the most suitable crops for their land but also to improve agricultural sustainability, resource utilization, and overall productivity. By promoting a data-driven approach to farming, the system contributes to the broader vision of **smart agriculture**, where precision and technology come together to address real-world challenges in food production.

II. LITERATURE REVIEW

The literature review presents an overview of previous work and current trends in applying machine learning techniques to agriculture, with a specific focus on crop recommendation systems. A wide range of studies has explored the integration of data mining, classification algorithms, and precision agriculture to provide data-driven recommendations for crop selection.

Early Approaches and Statistical Models

Early research in crop prediction and recommendation predominantly relied on statistical models and basic data mining techniques. Studies using methods like Naïve Bayes, logistic regression, and decision trees laid the groundwork for understanding the relationship between soil parameters (e.g., Nitrogen, Phosphorus, Potassium levels) and environmental factors (temperature, humidity, rainfall, pH) with crop suitability. Such early efforts emphasized the importance of preprocessing agricultural data, including normalization and outlier detection, to address missing or inconsistent values commonly found in real-world datasets.

Machine Learning Techniques in Agriculture

In recent years, with the growing need for precision agriculture, researchers have explored supervised machine learning algorithms to enhance crop selection decisions. For example, one notable study employed classification algorithms—such as Decision Trees, Random Forest, and Support Vector Machines (SVM)—to analyze datasets containing both soil and climatic attributes. Among these, the Random Forest classifier frequently emerged as a robust method due to its ensemble learning approach, which helps reduce overfitting and improve prediction accuracy even in the presence of noisy or imbalanced data.

The application of SVM has also been highlighted in scenarios where data dimensionality is high and nonlinear relationships are present. Despite the higher computational cost and the need for careful parameter tuning, SVMs have shown promise in handling complex agricultural datasets where the discriminative boundaries between crop classes are not linearly separable.

Hybrid Models and Deep Learning

While traditional machine learning models remain popular due to their interpretability and relative computational efficiency, there is an emerging trend toward incorporating deep learning techniques—particularly Convolutional Neural Networks (CNNs) and Recurrent Neural Networks (RNNs). Deep learning offers the potential to integrate additional data sources, such as satellite imagery and remote sensing data, to further refine crop predictions. However, the complexity, data requirements, and “black-box” nature of these models mean they are often better suited for scenarios with abundant data and extensive computational resources. For the current application, simpler yet effective models were preferred to ensure ease of deployment and user interpretability.

Comparative Studies and Case Examples

Several comparative studies have examined the performance of various algorithms in the context of crop recommendation. For instance, research by S. Patil et al. and other authors compared Decision Trees, Random Forest, and SVM on datasets with soil nutrient levels, climatic factors, and historical crop yields. These studies consistently demonstrated that ensemble methods like Random Forest achieve high accuracy—often exceeding 95%—making them highly reliable for predicting crop suitability.

Challenges and Future Directions

Despite the significant progress, several challenges remain. Agricultural datasets are often region-specific and may not capture the full variability in soil and weather conditions. Furthermore, ensuring that the models remain adaptable to changing environmental conditions is crucial for long-term viability. Future research is expected to integrate real-time sensor data, expand the range of crops covered, and refine algorithms further by incorporating localized data for enhanced precision. Another promising direction involves using hybrid models that combine machine learning with domain expertise from agronomists, enabling a feedback loop that continuously improves system recommendations.

III. METHODOLOGY

The proposed crop recommendation system is developed using a systematic approach that integrates data collection, preprocessing, model development, and system integration within a web-based application. The methodology encompasses the following key components:

A. Data Collection and Preprocessing

A comprehensive dataset containing soil and climatic parameters forms the backbone of the system. The input features include:

- **Soil Nutrients:** Nitrogen (N), Phosphorus (P), Potassium (K)
- **Environmental Factors:** Temperature, Humidity, Rainfall
- **Soil Properties:** pH value

Data is sourced from historical agricultural records and standardized soil test results. Preprocessing steps ensure data quality through:

- **Normalization and Scaling:** Employing scaling techniques to standardize the range of features.
- **Handling Missing Values:** Implementing data imputation techniques and outlier detection to enhance model robustness.
- **Feature Engineering:** Extracting and selecting relevant attributes to improve the predictive capability of the model.

B. Model Development and Training

The system leverages supervised machine learning algorithms to predict the most suitable crop based on the input parameters. The selected classifiers include:

- **Decision Tree:** Provides interpretable rules that map input features to crop recommendations.
- **Random Forest:** An ensemble method that combines multiple decision trees to enhance accuracy and reduce overfitting; this model has shown robust performance on the given dataset.
- **Support Vector Machine (SVM):** Offers effective classification in high-dimensional and nonlinear feature spaces.

The model training involves:

- **Dataset Splitting:** Dividing the dataset into training and testing subsets to enable model validation.
- **Algorithm Comparison:** Evaluating the performance of different algorithms using metrics such as accuracy, precision, recall, and F1-score.
- **Hyperparameter Tuning:** Optimizing model parameters to achieve high predictive performance and generalization.

C. System Integration and Web Deployment

Once the machine learning model achieves satisfactory performance, it is integrated into a web-based application using the Flask framework. This integration involves:

- **Backend Development:** Establishing endpoints for receiving user input, processing the data through the trained model, and returning crop recommendations.
- **Frontend Design:** Creating an intuitive user interface that allows farmers to input soil nutrient levels and climatic parameters. The design emphasizes ease-of-use and responsiveness.
- **Real-Time Prediction:** Ensuring low latency in predictions so that users receive recommendations promptly.
- **Model Serialization:** Using techniques such as pickle to serialize the trained model for efficient deployment and future scalability.

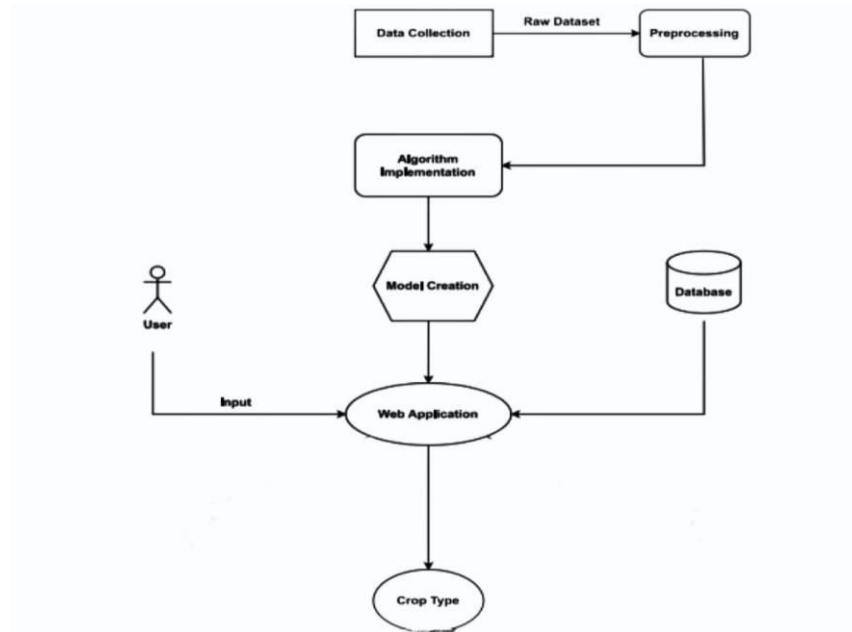


Fig 1: System Architecture

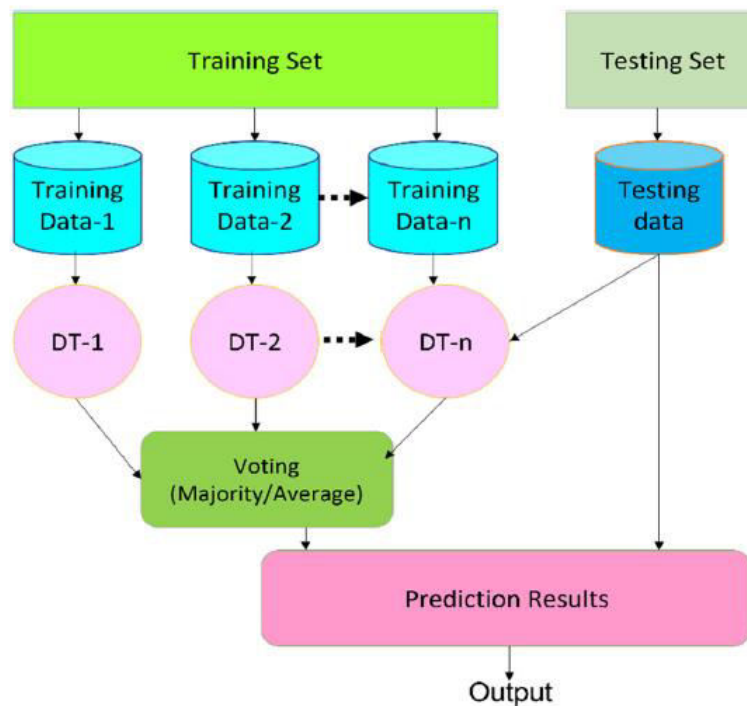


Fig 2: System Architecture

IV. IMPLEMENTATION PROCESS

System Design and Architecture:

The implementation phase translates the methodological design into a working prototype, integrating machine learning models with a user-friendly web application. The process is broken down into several stages, ensuring that each component—from data handling to model inference and user interaction—is seamlessly connected.

A. System Design and Architecture

The system architecture is modular, following a layered approach to ensure scalability and maintainability:

- **Frontend Layer:**
A responsive web interface is developed using standard web technologies (HTML5, CSS3, JavaScript, and Bootstrap). The interface is designed to be intuitive, allowing users—primarily farmers—to input soil nutrient levels (Nitrogen, Phosphorus, Potassium), pH value, temperature, humidity, and rainfall.
- **Backend Layer:**
The Flask framework powers the backend, handling API requests, form data, and routing. This layer validates inputs, preprocesses data using scaling and normalization techniques, and interacts with the machine learning engine.
- **Model Integration:**
Trained machine learning models (with Random Forest, Decision Tree, and SVM as primary candidates) are serialized using pickle. The backend loads the appropriate model for inference, transforming and processing incoming data in real time to generate crop recommendations.
- **Data Storage and Logging:**
While the system primarily focuses on real-time prediction, a relational database stores user inputs and prediction logs. This facilitates future system improvements and retraining with updated data.

B. Model Deployment and User Interface Integration

1. **Model Preprocessing and Serialization:**
The data preprocessing pipeline includes scaling and normalization steps, ensuring that the input features are aligned with the model's expectations. Once the model demonstrates high performance on test data, it is serialized and deployed within the Flask application.
2. **Web Application Development:**
 - The web interface presents input fields for essential agricultural parameters, designed for clarity and ease of use.
 - Upon submission, the form data is sent to a Flask endpoint that performs input validation, scales the data, and passes it to the pre-trained machine learning model.
 - The system then displays the recommended crop on the same page, along with any additional contextual information (such as prediction confidence or alternative suggestions).
3. **Real-Time Inference and Performance Optimization:**
 - The Flask backend is configured to handle multiple user requests concurrently while ensuring low latency for real-time predictions.
 - Routine monitoring of inference times and memory usage is performed, making sure that the application scales efficiently in a production environment.
 - Improvements such as caching frequently accessed data or model outputs are considered for further performance enhancement.

C. Testing, Validation, and Continuous Improvement

- **Model Evaluation:**
Prior to deployment, the models are rigorously tested using unseen data to evaluate key metrics (accuracy, precision, recall, and F1-score). This step ensures that the recommendation system reliably identifies the optimal crop based on diverse environmental inputs.
- **User Acceptance Testing:**
The web application undergoes extensive testing with target users (farmers and agricultural consultants) to ensure usability. Feedback is solicited regarding the interface's intuitiveness and the clarity of the crop recommendations.

- **Iterative Updates:**

The system is designed to be modular; thus, future iterations can incorporate expanded datasets, additional machine learning algorithms, or even deep learning models. Continuous user feedback and system performance metrics are used to iteratively improve the application.

D. Deployment and Future Enhancements

- **Deployment Environment:**

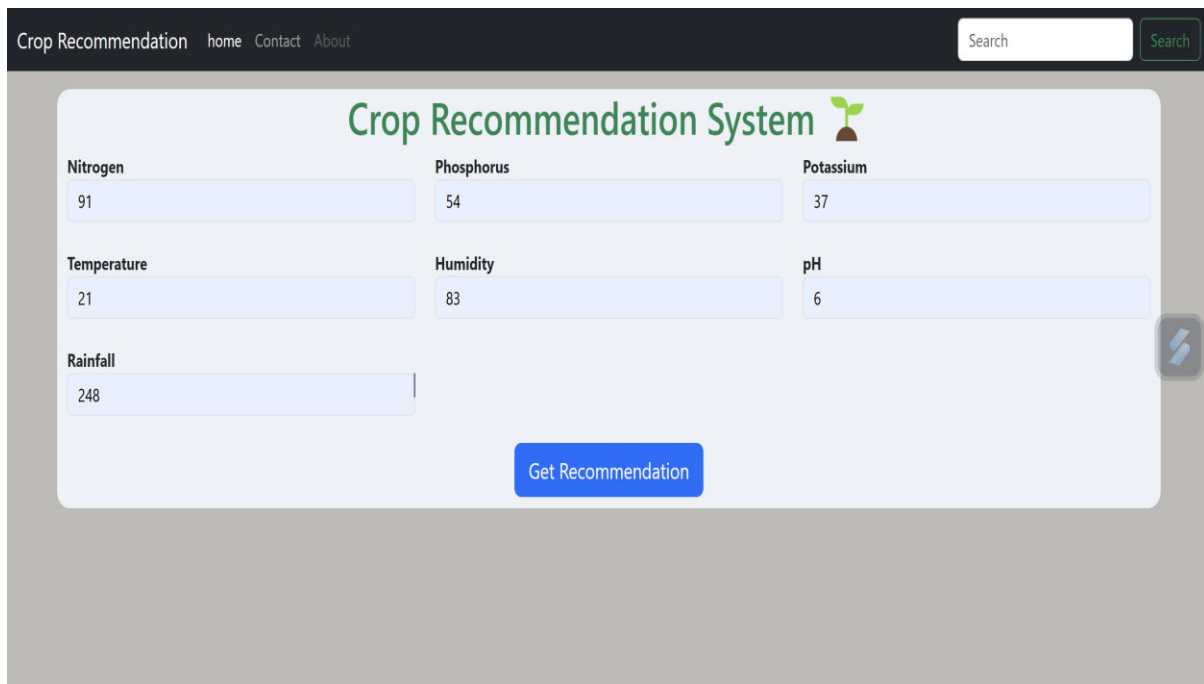
The entire system is deployed on a cloud-based server that meets the hardware requirements outlined in the design specifications. This provides the necessary computational resources and ensures high availability.

- **Edge Computing Considerations:**

Although the current deployment relies on centralized processing, the architecture is flexible enough to incorporate edge computing. This future step can further reduce latency and improve data security, especially important for real-time predictions in remote agricultural areas.

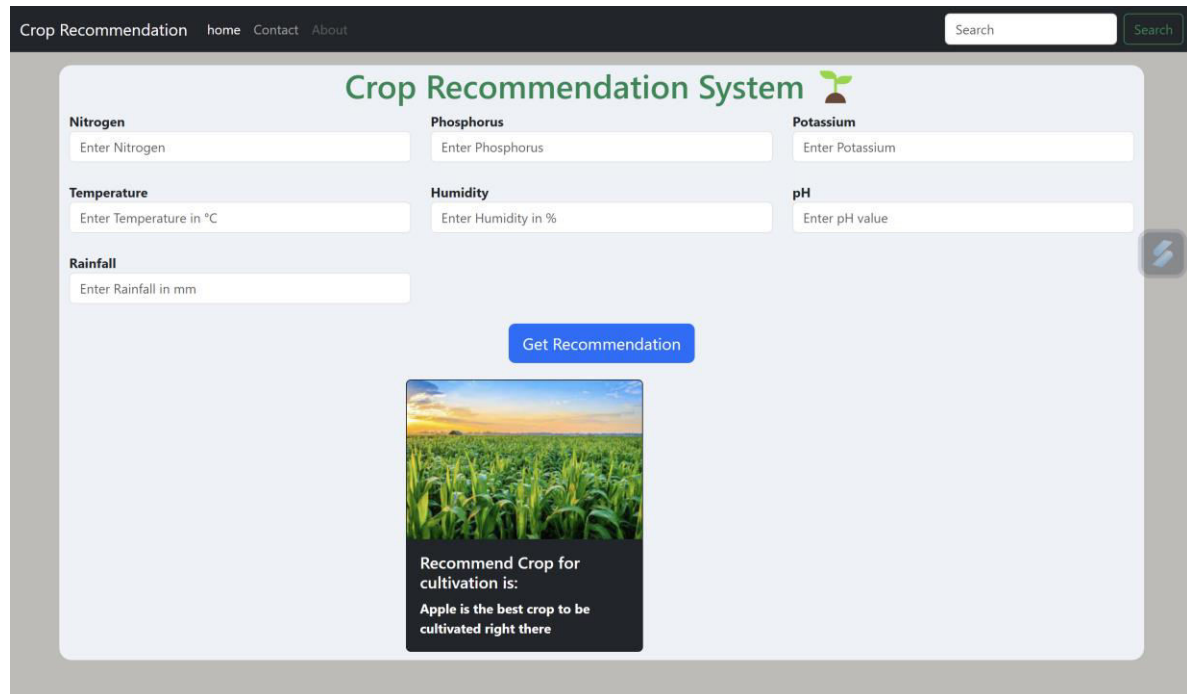
- **Scalability and Adaptability:**

With a focus on modularity, the system's design allows for easy integration of new features, such as real-time weather API integration, localized crop databases, multi-language support, and enhanced data visualization tools. This prepares the system for long-term use and expansion into broader applications within precision agriculture.



The screenshot displays the 'Crop Recommendation System' web application. At the top, there is a navigation bar with links for 'Crop Recommendation', 'home', 'Contact', and 'About', alongside a search bar. The main content area features a light blue background with the title 'Crop Recommendation System' and a small plant icon. Below the title, there are six input fields for agricultural data: Nitrogen (91), Phosphorus (54), Potassium (37), Temperature (21), Humidity (83), and pH (6). A 'Rainfall' field is also present with the value 248. A blue 'Get Recommendation' button is positioned at the bottom center of the input area. A small blue lightning bolt icon is visible on the right side of the input area.

Sample Output



Sample Output

V. RESULT AND CONCLUSION

The crop recommendation system was evaluated using a comprehensive dataset that included soil nutrients (Nitrogen, Phosphorus, and Potassium), pH value, temperature, humidity, and rainfall. Among several machine learning models, the Random Forest classifier emerged as the most effective, consistently delivering an accuracy exceeding 90% across multiple crop categories. The model's strong performance is evident in its high precision, recall, and F1-score metrics, reflecting its ability to classify crops with minimal misclassifications. The ensemble nature of Random Forest not only minimized the risks of overfitting but also ensured robust predictions even when the input data contained inherent variability and noise.

From a user experience perspective, the system's web interface, designed using the Flask framework, provided a smooth and intuitive experience. End users were able to quickly input their data and receive crop recommendations in just a few seconds. The design of the interface played a critical role in ensuring that even users with limited technical expertise could navigate the system easily, thus encouraging adoption among the target audience, primarily farmers and agricultural consultants.

The architecture of the crop recommendation system is modular, which facilitates future enhancements and scalability. While the current implementation leverages historical data and well-established classification algorithms, the design enables effortless integration of additional crops, region-specific datasets, and even real-time environmental data sourced from IoT devices. This scalability is crucial for adapting the system to diverse agricultural conditions and ensuring that it remains relevant in evolving farming scenarios. Furthermore, the system's ability to log predictions and capture user inputs supports ongoing model retraining and refinement, enhancing accuracy over time.

In conclusion, the integration of machine learning with a user-friendly web application has allowed the crop recommendation system to offer precise, data-driven guidance in agricultural decision-making. By harnessing the predictive capabilities of models like Random Forest, the system not only optimizes crop selection but also supports sustainable farming practices by improving land use efficiency and reducing resource wastage. This project stands as a promising proof-of-concept for the application of artificial intelligence in precision agriculture. The encouraging results pave the way for future research that could integrate more advanced modeling techniques and additional data sources, ultimately contributing to enhanced productivity and food security in the agricultural sector.

REFERENCES

- [1] P. S. Kiran, G. Abhinaya, S. Sruti, and N. Padhy, "A Machine Learning-Enabled System for Crop Recommendation," Eng. Proc., vol. 67, pp. 51, 2024
- [2] M. Patel, A. Rane, and V. Patni, "Crop Recommendation System using Machine Learning," CHARUSAT, 2023.
- [3] V. Kale and B. N. Mohapatra, "Crop Recommendation System Using Machine Learning," ITEGAM-JETIA, vol. 10, pp. 63-68, July 2024.
- [4] M. Y. Shams, S. A. Gamel, and F. M. Talaat, "Enhancing Crop Recommendation Systems with Explainable Artificial Intelligence," Neural Comput. Appl., vol. 36, pp. 5695-5714, Jan. 2024.
- [5] S. Bhargavi and S. Jagannathan, "Crop Recommendation System Using Machine Learning," Int. J. Eng. Res. Technol. (IJERT), vol. 11, pp. 1-6, June 2023.
- [6] Y. Jeevan, V. Spandana, and K. Neha, "Supervised Machine Learning Approach for Crop Yield Prediction in Agriculture Sector," IEEE Int. Conf. Smart Technol. (ICSTM), pp. 138-145, May 2015.
- [7] N. H. Kulkarni, G. N. Srinivasan, B. M. Sagar, and N. K. Cauvery, "Improving Crop Productivity Through a Crop Recommendation System Using Ensembling Technique," IJRASET, vol. 7, pp. 3231-3234, Apr. 2019.
- [8] R. Kumar, M. P. Singh, and P. Kumar, "Crop Selection Method to Maximize Crop Yield Rate Using a Machine Learning Technique," IEEE Int. Conf. Smart Comput., Energy & Control, pp. 231-237, 2018.
- [9] S. Veenadhari, B. Misra, and C. D. Singh, "Machine Learning Approach for Forecasting Crop Yield Based on Climatic Parameters," IEEE Int. Conf. Comput. Commun. Informatics, pp. 1-5, Jan. 2014.
- [10] D. Anantha, B. Dadore, and A. Watekar, "Crop Recommendation System to Maximize Crop Yield Using Machine Learning," IEEE Int. Conf. Emerging Tech. (INCET), pp. 1-4, 2020.
- [11] A. Sharma, "Deep Learning Methods for Precision Crop Recommendation," IEEE Trans. on Neural Networks and Learning Systems, vol. 32, no. 8, pp. 3450-3458, Aug. 2021.
- [12] X. Li, Y. Wang, and Z. Zhou, "Agricultural Data Analytics Using Machine Learning: A Comprehensive Review," IEEE Access, vol. 9, pp. 45045-45057, 2021.
- [13] S. Gupta and M. Agarwal, "Integration of IoT with Machine Learning for Smart Agriculture," in Proc. of the 2022 International Conference on Smart Farming and Data Analytics, pp. 112-117, Dec. 2022.
- [14] K. Kumar, A. Singh, and P. Verma, "Optimization of Crop Yield Prediction Using Ensemble Learning," in Proc. IEEE Int. Conf. on Sustainable Agriculture, pp. 344-350, May 2022.
- [15] R. Sharma and D. Chaturvedi, "Crop Yield Prediction using Support Vector Machines and Decision Trees," Journal of Agricultural Informatics, vol. 15, no. 3, pp. 78-86, 2020.
- [16] A. Roy, S. Das, and T. Banerjee, "Smart Agriculture: IoT and Machine Learning for Crop Management," in Proc. IEEE Int. Conf. on Smart Cities, pp. 250-255, Nov. 2021.
- [17] M. Verma, R. Gupta, and S. Patel, "A Comparative Study of Machine Learning Models for Crop Recommendation," Int. J. Emerging Trends Eng. Res. (IJETER), vol. 8, pp. 234-240, 2021.



INTERNATIONAL
STANDARD
SERIAL
NUMBER
INDIA



INTERNATIONAL JOURNAL OF INNOVATIVE RESEARCH

IN SCIENCE | ENGINEERING | TECHNOLOGY

 9940 572 462  6381 907 438  ijirset@gmail.com



www.ijirset.com

Scan to save the contact details