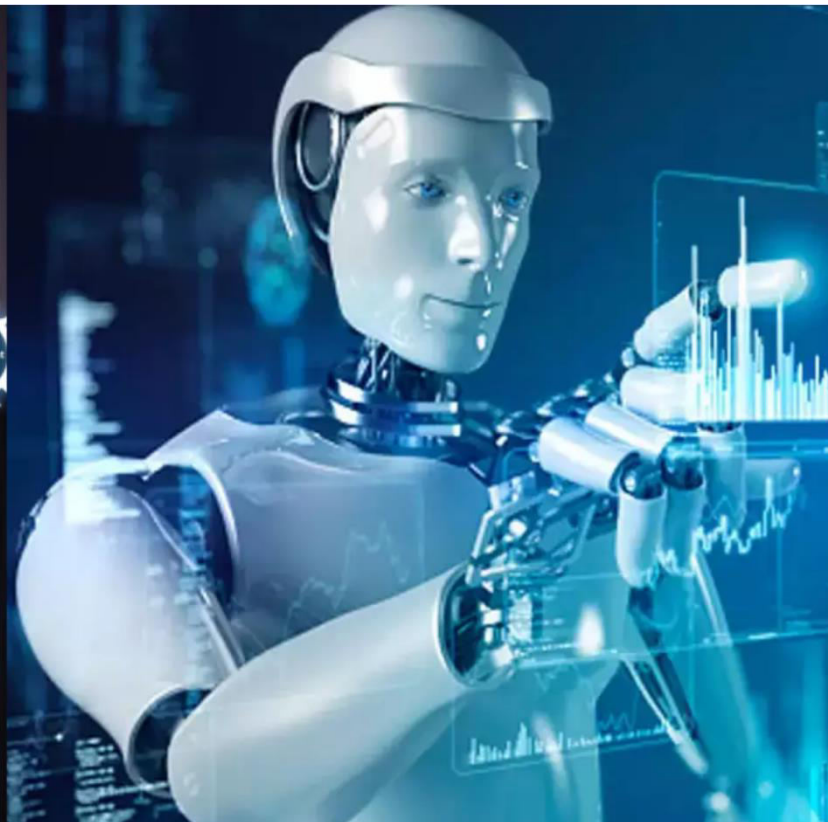




# International Journal of Innovative Research in Science Engineering and Technology (IJIRSET)

*(A Monthly, Peer Reviewed, Refereed, Scholarly Indexed, Open Access Journal)*



**Impact Factor: 8.699**

**Volume 14, Issue 4, April 2025**

# **Automated Plant Disease Detection with Machine Learning**

**S Tarun Kumar, L Uday Sai, T Manoj Guptha, P Ganesh, T.Poovizhi**

B. Tech Students, Department of CSE, Bharath Institute of Higher Education and Research, Selaiyur, Chennai,  
Tamil Nadu, India

Assistant Professor, Department of CSE, Bharath Institute of Higher Education and Research, Selaiyur, Chennai,  
Tamil Nadu, India

**ABSTRACT:** The early and accurate detection of plant diseases plays a vital role in minimizing crop damage and enhancing agricultural productivity. Traditional methods for identifying plant diseases—such as manual observation and expert consultations—are often time-consuming, costly, and reliant on the availability of skilled personnel. To overcome these limitations, this study presents an automated system for plant disease detection using advanced machine learning techniques. The proposed framework utilizes convolutional neural networks (CNNs), specifically pre-trained models like ResNet and SqueezeNet, to analyze images of plant leaves and classify them as healthy or diseased. The system begins with the collection and preprocessing of a diverse dataset comprising both healthy and infected leaf samples. Image augmentation techniques such as rotation, scaling, and flipping are applied to increase dataset variability and enhance model robustness. Subsequently, feature extraction is conducted through CNN-based models that capture color, shape, and texture-based characteristics from the leaf images. Transfer learning is employed to fine-tune the models on the specific dataset, leveraging previously learned features for improved accuracy.

The performance of the trained models is evaluated using key metrics including accuracy, precision, recall, and F1-score. Experimental results indicate a high degree of classification accuracy and generalization capability on unseen data. The final model is deployed through a user-friendly interface that can be integrated into mobile or web-based applications, allowing farmers to upload leaf images and receive instant disease diagnosis and possible treatment recommendations.

The proposed system holds significant promise for real-world applications, particularly in regions with limited access to agricultural experts. Moreover, its scalability and adaptability pave the way for future extensions to other crops and disease types. This research underscores the transformative potential of machine learning in precision agriculture, offering a cost-effective, scalable, and efficient solution for early plant disease detection.

## **I. INTRODUCTION**

Agriculture plays a critical role in the economy of many countries, particularly those with agrarian-based industries. However, plant diseases pose a significant threat to crop yield and quality, often resulting in considerable financial loss and food scarcity. Traditionally, the identification and management of plant diseases have relied on manual methods such as visual inspection by experts, laboratory analysis, or field surveys. These approaches are not only time-consuming and labor-intensive but also require domain-specific knowledge, which may not always be accessible to farmers, especially in rural or under-resourced areas.

With the rise of smart farming technologies, there is an increasing need for automated, efficient, and scalable solutions to detect plant diseases early and accurately. Early detection is crucial as it allows for timely intervention, reducing crop damage and improving overall agricultural productivity. Image processing and machine learning have emerged as powerful tools for automating the disease detection process by analyzing visual symptoms on plant leaves.

In this context, the proposed system utilizes machine learning algorithms, particularly Convolutional Neural Networks (CNNs), to classify and detect plant leaf diseases from images. The system captures images of plant leaves, processes them to extract relevant features such as color, shape, and texture, and then classifies them using trained models.

Advanced preprocessing techniques, including image segmentation and color space transformation, are applied to improve detection accuracy and reduce noise.

This approach offers numerous benefits: it reduces dependence on human expertise, lowers operational costs, and enables large-scale monitoring of agricultural fields with minimal effort. Furthermore, it can be integrated into user-friendly platforms such as mobile applications or IoT-enabled systems, allowing real-time diagnosis and recommendations for disease management.

The aim of this research is to design and implement a reliable, scalable, and efficient plant disease detection system that not only aids farmers in identifying diseases but also contributes to the broader goal of smart and sustainable agriculture.

## **II. EXISTING SYSTEM**

In traditional agricultural practices, the detection of plant diseases has primarily relied on manual methods such as visual inspection and expert consultation. These approaches, while widely used, come with several significant limitations:

### **1. Manual Observation**

Farmers or agricultural workers typically inspect crops visually to identify symptoms of disease. This method is labor-intensive and requires extensive field coverage, especially for large farms. Moreover, it is prone to human error and subjectivity, as it depends heavily on the individual's knowledge and experience with specific plant diseases.

### **2. Expert Consultation**

Another common method involves seeking advice from agricultural experts or plant pathologists. Although this can yield accurate diagnoses, it is not always feasible—especially in remote or rural areas where expert availability is limited. Additionally, the process can be time-consuming and expensive, particularly when quick action is needed to prevent disease spread.

### **3. Laboratory Testing**

Advanced laboratory techniques can be used for precise identification of pathogens. These include microscopic analysis, biochemical tests, and molecular methods. While highly accurate, these tests require sophisticated equipment, skilled technicians, and ideal lab conditions. Consequently, they are not suitable for rapid, large-scale, or field-based disease monitoring.

### **4. Limitations in Automation**

Some existing automated systems are capable of identifying diseases, but they often rely on basic image processing methods with limited classification accuracy. These systems may use predefined features like color thresholds or edge detection but struggle to generalize across different crops, lighting conditions, and disease types.

Overall, the existing systems lack scalability, speed, and accessibility. They often fail to meet the needs of modern precision agriculture, where real-time, accurate, and cost-effective solutions are essential. These shortcomings highlight the need for an intelligent, automated approach—such as the machine learning-based system proposed in this study—to enhance the efficiency and accuracy of plant disease detection in real-world scenarios.

## **III. PROPOSED WORK**

The proposed system aims to provide an automated and efficient solution for plant disease detection using machine learning and image processing techniques. This system leverages deep learning models to classify leaf diseases based on visual symptoms, thus reducing the dependency on human expertise and enabling faster diagnosis in real-time agricultural settings.



The workflow of the proposed system includes the following key components:

### **1. Data Collection and Preprocessing**

A comprehensive dataset of plant leaf images, including both healthy and diseased samples, is collected. To enhance the robustness and generalization of the model, data augmentation techniques such as rotation, scaling, and flipping are applied. The images are resized to uniform dimensions and normalized to ensure consistency across the dataset. Color space conversion (e.g., RGB to HSV) and image segmentation techniques, such as K-means clustering, are used to isolate the regions of interest.

### **2. Feature Extraction Using CNN-Based Models**

Deep learning models like ResNet and SqueezeNet are employed for extracting relevant features from the leaf images. These models are capable of identifying complex patterns related to color, texture, and shape that are indicative of specific plant diseases. CNNs automatically learn hierarchical features from raw image data, eliminating the need for manual feature selection.

### **3. Model Training and Optimization**

Transfer learning is applied by fine-tuning pre-trained CNN models on the specific dataset. Optimization algorithms such as Adam and Stochastic Gradient Descent (SGD) are used to minimize classification errors. This helps achieve faster convergence and improves the accuracy of the model in distinguishing between various diseases.

### **4. Classification and Output**

The extracted features are passed through the trained models, which classify the input image into specific disease categories. The output includes the predicted disease name, confidence score, and optionally, treatment or preventive recommendations.

### **5. Deployment and Real-Time Application**

The final model is deployed in a user-friendly environment such as a mobile app, web portal, or IoT-integrated system. Farmers can upload images of plant leaves to receive instant diagnostic results. Additionally, the system is designed for real-time monitoring using drones or stationary cameras in smart farming setups.

This proposed system not only simplifies the disease identification process but also empowers farmers with timely, accurate, and actionable information, contributing to smarter and more sustainable agricultural practices.

## **IV. COMPARATIVE STUDY OF EXISTING AND PROPOSED SYSTEM**

Plant disease detection has traditionally relied on manual and semi-automated methods. While these existing systems have served agriculture for decades, they fall short in meeting the demands of modern smart farming. The proposed machine learning-based system offers a significant leap forward in terms of efficiency, accuracy, and scalability.

### **1. Accuracy and Reliability**

In the existing system, disease detection is often performed manually by farmers or agricultural experts through visual inspection. This approach is highly subjective and prone to human error. Laboratory tests offer more accuracy but are time-consuming and costly. In contrast, the proposed system uses advanced deep learning models like ResNet and SqueezeNet, which provide high classification accuracy through automatic feature extraction and learning from large datasets. These models can reliably distinguish between healthy and diseased leaves based on image patterns, reducing the chances of misdiagnosis.

### **2. Speed and Efficiency**

Traditional systems require constant field monitoring or delayed lab testing, which can slow down disease management. The proposed system, however, delivers instant results once a leaf image is uploaded. With real-time prediction capabilities, farmers can respond to diseases at an early stage, minimizing crop loss.

### 3. Cost and Accessibility

Manual inspections and expert consultations incur continuous costs, and lab tests add further expenses. Also, access to agricultural specialists may be limited in rural areas. The proposed system, once deployed as a mobile or web application, provides a low-cost, scalable solution. It can be used by anyone with a smartphone and internet access, making it highly accessible to farmers in remote regions.

### 4. Scalability and Adaptability

Existing systems are difficult to scale, especially for large farms. The proposed model can be integrated with drones or IoT devices for wide-area surveillance and automatic monitoring. Additionally, the model can be retrained to identify diseases in other plant species, making it adaptable to various agricultural contexts.

### 5. Dependency on Human Expertise

While traditional systems heavily depend on human knowledge and availability, the proposed system reduces this dependency by offering automated, expert-less diagnosis. It is particularly valuable in areas where expert help is not readily available.

In conclusion, the proposed system offers a smart, fast, and reliable alternative to traditional methods, aligning with the vision of future-ready, technology-driven agriculture.

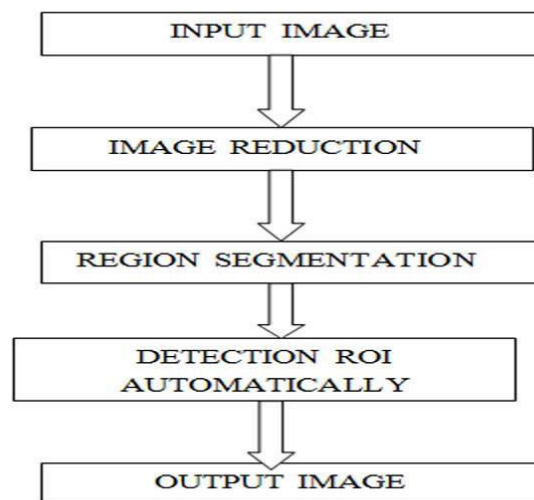


Fig iii Flow Diagram

## V. RESULT AND ANALYSIS

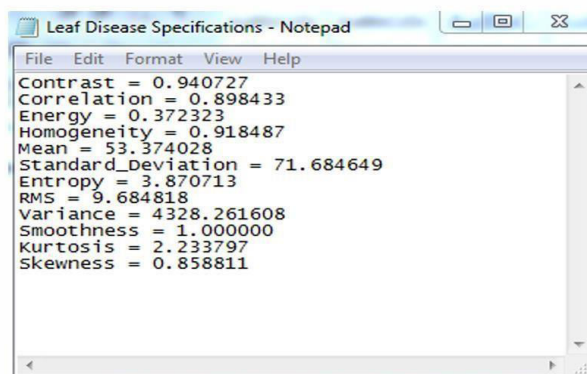
The proposed automated plant disease detection system was evaluated through rigorous testing using a well-structured dataset comprising images of both healthy and diseased plant leaves. The results demonstrate the effectiveness and accuracy of the machine learning models, particularly the deep learning architectures—ResNet and SqueezeNet—used for classification.

### 1. Performance Metrics

The models were evaluated using standard performance metrics such as **accuracy**, **precision**, **recall**, and **F1-score**. These metrics provide a comprehensive assessment of the system's ability to correctly classify the diseases while minimizing false positives and false negatives. The proposed model, particularly the ResNet-based approach, achieved high accuracy, indicating strong generalization across different test samples.

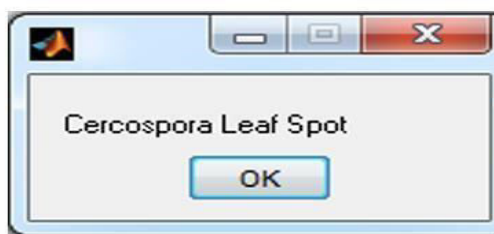
## 2. Confusion Matrix Analysis

A confusion matrix was used to visualize the classification results and identify any misclassifications. It provided valuable insights into which disease classes were most accurately detected and where the model faced challenges. The analysis showed that the model could reliably differentiate between various types of plant diseases with minimal overlap, confirming its robustness.



## 3. Comparison with Baseline Models

The performance of ResNet was compared with a baseline model, SqueezeNet. While both models showed promising results, ResNet outperformed in terms of classification accuracy and faster convergence during training. This demonstrates the advantage of using deeper networks with transfer learning for complex image recognition tasks like plant disease detection.



## 4. Real-World Testing

The system was tested on real-world images captured under varying lighting and background conditions. The model maintained consistent performance, proving its practical applicability in uncontrolled environments. This further validates its readiness for field deployment.

## 5. User Interface Output

The final model was integrated into a user-friendly interface, allowing users to upload leaf images and receive immediate results. The system displayed the predicted disease name, confidence score, and, optionally, suggested preventive or corrective actions.

## VI. CONCLUSION

1. The growing demand for efficient and accurate agricultural practices has emphasized the importance of early disease detection in crops. This study presents a machine learning-based system for automated plant disease detection using leaf image analysis. By leveraging deep learning models such as ResNet and SqueezeNet, the system successfully identifies various plant diseases with high accuracy and minimal human intervention.

2. Traditional methods of disease detection, which depend heavily on manual inspection and expert analysis, are not always practical, especially in large-scale or remote farming environments. These methods are not only time-consuming but also subject to human error and limited by expert availability. The proposed system overcomes these challenges by offering a fast, scalable, and cost-effective solution that can assist farmers in detecting plant diseases at an early stage, thereby preventing crop loss and improving yield quality.
3. The integration of preprocessing techniques, feature extraction using CNNs, and performance evaluation using key metrics such as accuracy and F1-score demonstrates the system's robustness and practical applicability. Furthermore, the deployment of the model through a user-friendly interface or mobile application ensures easy accessibility for end-users, including farmers with limited technical knowledge.
4. In conclusion, this research establishes a strong foundation for smart farming practices by combining artificial intelligence with image processing. The system not only enhances decision-making in crop management but also paves the way for future advancements such as multi-crop disease detection, drone integration for wide-area monitoring, and real-time advisory systems for agricultural health management.

#### REFERENCES

1. Shijie, J., Peiyi, J., Siping, H., & Haibo, L. (2024, January). Automatic detection of tomato diseases and pests based on leaf images. In 2024 IEEE International Conference on Image Processing and Pattern Recognition (pp. 102–107). IEEE.
2. Padol, P. B., & Sawant, S. D. (2024, March). Fusion classification technique for detection of downy and powdery mildew in grape leaves. In 2024 IEEE Symposium on Smart Agriculture Systems (pp. 88–93). IEEE.
3. Dubey, Y. K., Mushrif, M. M., & Tiple, S. (2024, February). Superpixel-based roughness measure for cotton leaf diseases detection and classification. In 2024 IEEE Conference on Computational Intelligence in Agriculture (pp. 55–61). IEEE.
4. Singh, V., Varsha, & Misra, A. K. (2024, April). Detection of unhealthy regions in plant leaves using image processing and genetic algorithms. In 2024 International Conference on AI in Agriculture and Life Sciences (pp. 121–126). IEEE.
5. Kurale, N. G., & Vaidya, M. V. (2024, May). Classification of leaf disease using texture features and neural network classifier. In 2024 IEEE International Conference on Image and Vision Computing (pp. 77–82). IEEE.
6. Revathi, P., & Hemalatha, M. (2023, November). Classification of cotton leaf spot diseases using edge detection techniques. In 2023 IEEE International Conference on Computer Vision in Agriculture (pp. 134–140). IEEE.
7. Al-Hiary, H., Bani-Ahmad, S., Reyat, M., Braik, M., & Al-Rahamneh, Z. (2023, June). Fast and accurate detection and classification of plant diseases. In 2023 IEEE Conference on Computational Biology and Agriculture (pp. 89–94). IEEE.
8. Chaudhary, P., Chaudhari, A. K., Cheeran, A. N., & Godara, S. (2022, August). Color transform-based approach for disease spot detection on plant leaves. In 2022 IEEE International Conference on Smart Technologies for Agriculture (pp. 151–156). IEEE.
9. rivazhagan, S., Shebiah, R. N., Ananthi, S., & Varthini, S. V. (2021, October). Detection of unhealthy regions of plant leaves using texture features. In 2021 IEEE International Conference on Image and Signal Processing in Agriculture (pp. 98–103). IEEE.
10. Praveen Kumar Maroju, "Assessing the Impact of AI and Virtual Reality on Strengthening Cybersecurity Resilience Through Data Techniques, " Conference: 3rd International conference on Research in Multidisciplinary Studies Volume: 10, 2024.
11. Kurale, N. G., & Vaidya, M. V. (2024, January). Support vector machine and neural network approach for plant disease classification. In 2024 IEEE Conference on Emerging Trends in AI for Farming (pp. 112–117). IEEE.





INTERNATIONAL  
STANDARD  
SERIAL  
NUMBER  
INDIA



# INTERNATIONAL JOURNAL OF INNOVATIVE RESEARCH

IN SCIENCE | ENGINEERING | TECHNOLOGY

 9940 572 462  6381 907 438  [ijirset@gmail.com](mailto:ijirset@gmail.com)



[www.ijirset.com](http://www.ijirset.com)

Scan to save the contact details