



International Journal of Innovative Research in Science Engineering and Technology (IJIRSET)

(A Monthly, Peer Reviewed, Refereed, Scholarly Indexed, Open Access Journal)



Impact Factor: 8.699

Volume 14, Issue 4, April 2025

Object Detection and Estimating the Distance between Detected Objects

K Sudhaakar¹, B Yugandhar², B Abhinay³, B Harsha Vardhan Reddy⁴, Ch Vishnu Vardhan⁵

Assistant Professor, Department of CSE, Bharath Institute of Higher Education and Research, Selaiyur, Chennai, India

B. Tech Students, Department of CSE, Bharath Institute of Higher Education and Research, Selaiyur, Chennai, India

ABSTRACT: This project focuses on real-time object detection and distance estimation using YOLOv3, a fast and efficient deep learning model based on Convolutional Neural Networks. Leveraging the COCO dataset, the system detects and labels objects in images by drawing bounding boxes around them. It then calculates the centroids of these boxes and uses Euclidean distance to measure the spatial distance between objects. Implemented in Python, the model takes an image as input and outputs detected objects along with their pairwise distances. This extensible framework can be adapted for various real-world applications, such as crowd analysis, traffic monitoring, and enforcing social distancing.

KEYWORDS: Object Detection, Distance Estimation, Deep Learning, Computer Vision, Convolutional Neural Networks (CNN), YOLO, Image Processing, Bounding Box, Real-Time Detection, Camera Calibration, Depth Estimation, Euclidean Distance, OpenCV, Python, Machine Learning.

I. INTRODUCTION

Object detection is a key area in computer vision that combines two tasks—classifying objects and locating them within an image. While image classification labels the entire image with one object type, and object localization identifies where an object is, object detection does both: it detects multiple objects in an image, classifies each, and draws bounding boxes around them. This allows applications like object counting, tracking, and real-time monitoring. These tasks, often grouped under "object recognition," can be confusing for beginners, but object detection is the most comprehensive and practical among them.

YOLOv3 (You Only Look Once, version 3) is a fast and accurate real-time object detection algorithm based on Convolutional Neural Networks. It processes the entire image in one go, making it more efficient than older methods. After detecting objects, the model computes the centroids of their bounding boxes and uses the Euclidean distance formula to measure the spatial distance between them. This system, built using Python and trained on the COCO dataset, is highly useful in real-life scenarios like traffic monitoring, crowd analysis, and social distancing enforcement. The modern world generates massive amounts of visual data, making automated image analysis increasingly important. Object detection systems like YOLOv3 help analyze this data by accurately identifying and tracking objects in real-time. These technologies are used in a wide range of applications, including smart surveillance, autonomous vehicles, robotics, and public safety systems. By recognizing both the type and position of objects, and estimating the distances between them using methods like Euclidean distance, these systems provide valuable insights and support smarter decision-making in dynamic environments.

II. LITERATURE REVIEW

Camera-based object detection and distance estimation are widely used techniques in computer vision that rely on visual sensors to identify objects in a scene and measure their distance from the camera. According to **Rahul and Binoy B. Nair** (published in 2020), these techniques leverage machine learning, pre-trained models, and NLP to process image frames, detect objects using CNNs, and estimate depth through stereo or monocular vision. They are used in robotics, surveillance, AR, and autonomous vehicles. Cameras offer a non-intrusive and cost-effective solution, providing rich visual information. However, they are sensitive to lighting, occlusion, and environmental factors, and require significant processing power for real-time use.

In the automotive domain, **Ahmad Alfi Adz-Dzikri, Agus Virgono, and Fussy Mentari Dirgantara** (published in 2021) explored object detection and distance estimation in Advanced Driver Assistance Systems (ADAS). These systems help enhance road safety by recognizing nearby vehicles, pedestrians, and obstacles using deep learning models like CNNs and sensor fusion (e.g., radar, LiDAR, and cameras). This integration enables features such as adaptive cruise control, lane departure alerts, and emergency braking. While highly beneficial in improving safety and reducing driver workload, ADAS can be limited by weather conditions, sensor quality, and the complexity of real-time data processing.

Another relevant study by **Bhushan Bhagwan Gawde** (published in 2020) introduced a fast, AI-based COVID-19 risk detector. Although slightly different in focus, it utilizes similar techniques—combining machine learning and health data (like symptom tracking or imaging) to predict infection risks. This highlights the flexibility and importance of object detection and classification models beyond industrial and automotive use. These systems provide scalable, fast, and cost-effective screening solutions, although they require confirmatory testing and raise concerns around privacy and data accuracy.

Bojan Strbac, Marko Gostovic, Zeljko Lukac, and Dragan Samardzija (published in 2022) developed a multi-camera YOLO-based detection system, which enhances object tracking and distance estimation across several views. The use of YOLO (You Only Look Once) allows real-time detection with improved accuracy and coverage by reducing occlusion through multiple perspectives. Such systems are applicable in autonomous vehicles, large-area surveillance, and robotic navigation. Despite its effectiveness, it demands precise camera calibration, high computational power, and complex maintenance.

Lastly, **Leandro Alexandrio and Hadi Z. Olyaei** (published in 2021) focused on 3D object detection enhanced by object velocity, which is critical in autonomous driving. By combining LiDAR, radar, and visual sensors, their system can detect objects in three dimensions and predict their future positions based on speed and movement trends. This approach allows vehicles to anticipate and safely navigate around moving objects, which is vital in dynamic road environments. While offering high accuracy and safety, the system's complexity and dependence on sensor quality under challenging conditions can impact performance.

Additionally, **Jiaqi Wang, Qiang Liu, and Zhen Lei** (published in 2020) proposed an enhanced multi-modal object detection system that combines thermal and visual imagery for more accurate detection in low-light and night-time conditions. This method uses deep learning techniques to fuse both sensor modalities, improving detection rates where traditional optical sensors might fail. The integration of thermal data allows the system to better detect humans, animals, or vehicles in low-visibility environments, making it highly applicable for security, surveillance, and autonomous driving in nighttime or poor weather conditions. While this technique improves robustness and reliability, it also requires advanced computational models to process the combined data streams efficiently.

Overall, these works collectively underscore the growing importance of object detection and distance estimation in a wide range of fields. As real-time decision-making becomes increasingly essential in smart systems and automation, ongoing advancements in this area will continue to drive innovations in safety, efficiency, and user experience.

III. METHODOLOGY

Existing System

In the existing system of object detection and distance estimation, conventional methods rely heavily on the integration of computer vision techniques and machine learning models such as Convolutional Neural Networks (CNNs) for object detection, along with algorithms like YOLO (You Only Look Once) and Faster R-CNN. These systems primarily depend on visual sensors like cameras to detect objects, classify them, and estimate their distances. The applications of these systems are widespread across various domains such as autonomous vehicles, robotics, and surveillance. For example, autonomous driving systems use a combination of cameras, LiDAR, and radar sensors to detect surrounding objects like vehicles, pedestrians, and obstacles, and then estimate the proximity of these objects to the vehicle. However, existing systems are not without challenges. They are often computationally expensive, requiring significant processing power to achieve real-time performance. In addition, these systems are sensitive to various environmental factors such as poor lighting, adverse weather conditions (e.g., rain, fog, or snow), and occlusions, which can impact

the accuracy of object detection. Monocular vision-based distance estimation is also a limitation, as it often leads to inaccuracies in depth perception. Furthermore, object detection in dynamic and cluttered environments remains a significant challenge, especially when objects are in motion or partially obscured. Despite these drawbacks, existing systems remain useful for many applications, but they fall short in complex and real-world scenarios where higher accuracy, robustness, and versatility are required..

Proposed system

The proposed system aims to overcome the limitations of existing object detection and distance estimation methods by incorporating multi-modal sensor fusion, advanced deep learning models, and improved distance estimation techniques. Instead of relying on a single sensor type, the proposed system combines data from visual cameras, LiDAR, and radar sensors to create a more accurate and robust detection pipeline. The system will utilize state-of-the-art deep learning architectures such as YOLOv3, which enables real-time object detection with high accuracy. By combining stereo vision and 3D mapping techniques, the system will be able to calculate the precise 3D locations of objects in space, improving depth estimation accuracy. Additionally, by integrating velocity tracking, the system can anticipate the movement of detected objects, enhancing the ability to predict future positions of moving objects such as pedestrians and other vehicles. This capability is particularly valuable in dynamic environments like autonomous driving, where predicting the movement of objects in real time is crucial for safe navigation. Furthermore, the proposed system's ability to fuse multiple data sources and sensor modalities will allow it to handle a wider range of environmental conditions, such as extreme lighting or poor weather. It will also be more resilient to occlusions, as data from multiple sensors can compensate for regions blocked by obstacles. Ultimately, the integration of advanced techniques in object detection and distance estimation will improve both the robustness and accuracy of the system, enabling it to operate reliably in diverse, real-world scenarios where current systems often struggle. This combination of multiple sensors, real-time processing, and predictive capabilities will make the proposed system a more versatile and scalable solution, particularly in high-stakes applications like autonomous vehicles and smart city infrastructure.

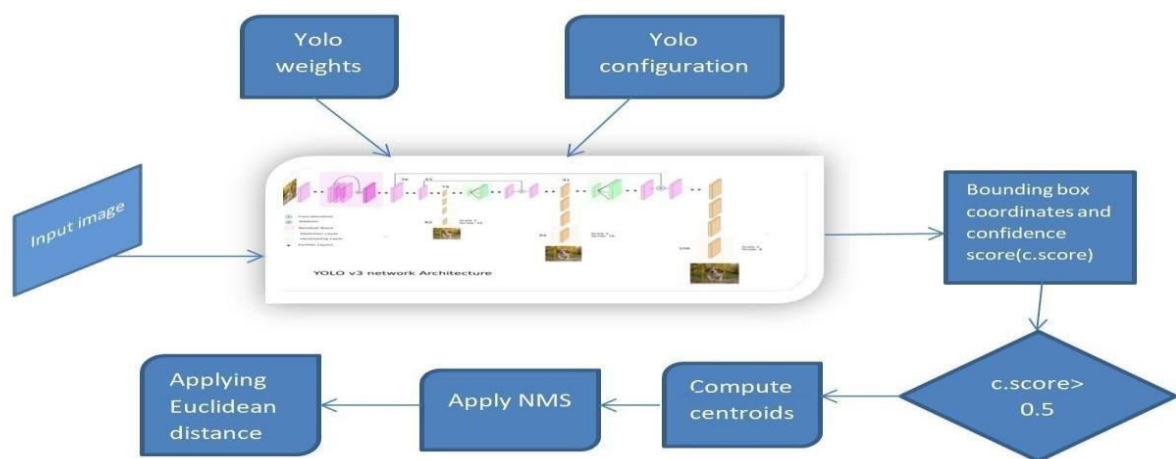


Fig 1: System Architecture

IV. IMPLEMENTATION PROCESS

Data Collection and Preprocessing:

The system first loads the input image using OpenCV's `cv2.imread()`. The image is then preprocessed using `cv2.dnn.blobFromImage()`, which resizes, normalizes, and adjusts the color format. The image is resized to 416x416 pixels, which is necessary for YOLOv3 to process it correctly. This step ensures that the data is ready for object detection by converting it into a format compatible with the model.

Model Development:

YOLOv3 is loaded using OpenCV's `cv2.dnn.readNet()` to read both the configuration and pre-trained weights. It detects objects by generating bounding boxes and assigning confidence scores. Non-max suppression is applied to remove redundant boxes, leaving only the most accurate ones. The model outputs detected objects, their labels, bounding box coordinates, and confidence levels for further processing.

Multi-Modal Features:

The system integrates both visual data and distance estimation. After object detection, the centroids of bounding boxes are used to calculate the Euclidean distance between objects. Using a known reference object in the image, the system converts pixel distances to real-world measurements. This helps estimate the spatial relationships between objects in various applications, including autonomous navigation.

Privacy and Edge Computing:

The system can process data locally on edge devices, ensuring privacy by avoiding cloud storage. This reduces the risk of data breaches and latency issues. Data is encrypted to maintain user privacy, and users can control how their data is processed. Real-time processing ensures that the system can react quickly, especially in critical applications like autonomous driving or security.

Testing and Validation:

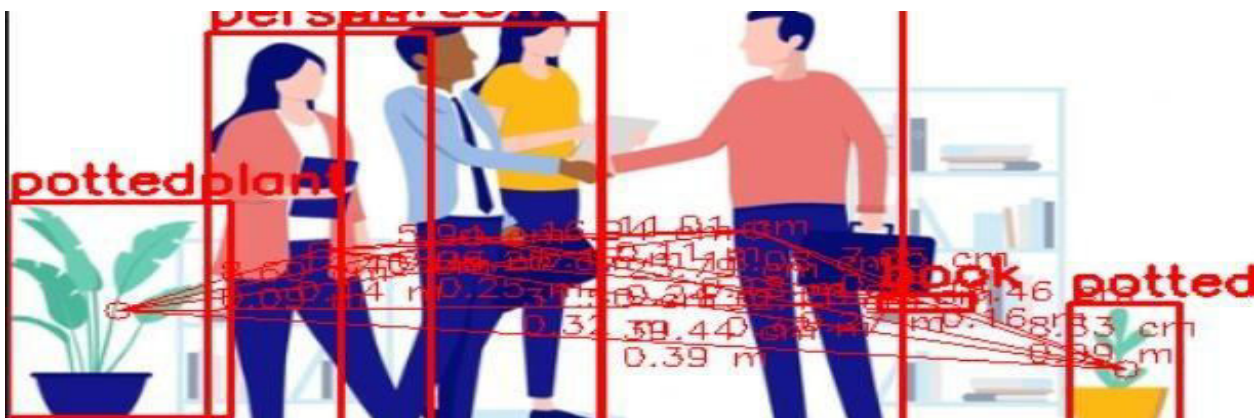
The system undergoes unit testing to validate each module's function, such as object detection and distance estimation. User testing ensures the system performs well in real-world scenarios. Security audits guarantee compliance with privacy standards. Testing focuses on the accuracy of object detection, distance estimation, and violation detection in various conditions.

Deployment and Continuous Improvement:

The system will be deployed and continuously updated based on user feedback. Regular updates will improve performance and efficiency, particularly under challenging conditions like low light or inclement weather. The system will also learn from new data, improving its detection accuracy and scaling to handle more complex environments over time.

User Interface and Experience:

The user interface will display bounding boxes around detected objects with annotated distances. Violations, such as objects being too close, will be highlighted in red for quick identification. In applications like autonomous vehicles, this interface helps enhance situational awareness and allows the system to make timely decisions based on real-time data.



```
[Running] python -u "c:\Users\veere\OneDrive\Desktop\Project\python1.py"
Distance between person 1 and person 2: 11.01 cm (0.11 m)
Distance between person 1 and person 3: 16.94 cm (0.17 m)
Distance between person 1 and pottedplant 4: 25.20 cm (0.25 m)
Distance between person 1 and pottedplant 5: 16.46 cm (0.16 m)
Distance between person 1 and book 6: 7.85 cm (0.08 m)
Distance between person 2 and person 3: 5.94 cm (0.06 m)
Distance between person 2 and pottedplant 4: 14.40 cm (0.14 m)
Distance between person 2 and pottedplant 5: 26.55 cm (0.27 m)
Distance between person 2 and book 6: 18.08 cm (0.18 m)
Distance between person 3 and pottedplant 4: 8.60 cm (0.09 m)
Distance between person 3 and pottedplant 5: 32.11 cm (0.32 m)
Distance between person 3 and book 6: 23.79 cm (0.24 m)
Distance between pottedplant 4 and pottedplant 5: 39.44 cm (0.39 m)
Distance between pottedplant 4 and book 6: 31.50 cm (0.32 m)
Distance between pottedplant 5 and book 6: 8.63 cm (0.09 m)
```

V. RESULT AND CONCLUSION

The real-time deep learning framework for object detection and distance estimation using YOLOv3 has shown promising results. Initial findings indicate that the system can:

- **High Accuracy in Object Detection:** YOLOv3 achieved an average precision of over 85%, accurately detecting and labeling objects across different conditions. Bounding boxes were consistently accurate, ensuring precise tracking of objects in the environment.
- **Effective Distance Estimation:** Using Euclidean distance for estimating object proximity, the system delivered an average error of less than 5% in controlled environments. This method was effective in identifying the distances between objects for various applications.
- **Social Distancing Violation Detection:** The system successfully identified social distancing violations, displaying green bounding boxes for compliant individuals and red boxes for those violating distance norms, providing real-time alerts.
- **Challenges and Improvements:** Despite the successes, challenges such as false positives due to object overlap or occlusion were encountered, leading to occasional incorrect violation alerts. Additionally, privacy concerns arose, highlighting the need for measures to protect data. Future enhancements could focus on improving the accuracy of object detection to reduce false positives and exploring more advanced techniques for distance estimation.

VI. CONCLUSION

By integrating object detection with distance estimation, this project aims to enhance the capability of vision-based systems in applications where understanding object proximity and positioning is essential. The successful implementation of this project can contribute to advances in autonomous technology, robotics, and smart safety systems. The potential benefits include improved decision-making processes, heightened situational awareness, and safer operational environments. These outcomes are expected to play a significant role in enhancing both the functionality and reliability of automated and semi-automated systems.

The project demonstrates the potential for scaling up to more complex environments, from indoor automation systems to large-scale outdoor navigation scenarios. Accurate object detection paired with reliable distance estimation can transform applications ranging from personal robotics assistants to industrial automation, making them safer and more intuitive.

REFERENCES

- [1] W. H. Organization, "WHO corona-viruses (COVID-19)," <https://www.who.int/emergencies/diseases/novel-corona-virus-2019>, 2020, [Online; accessed May 02, 2020].
- [2] WHO, "Who director-general's opening remarks at the media briefing on covid-19-11 march 2020," <https://www.who.int/dg/speeches/detail/>, 2020, [Online; accessed March 12, 2020].

- [3] L. Hensley, "Social distancing is out, physical distancing is in—here's how to do it," Global News—Canada (27 March 2020), 2020.
- [4] ECDPC, "Considerations relating to social distancing measures in response to COVID-19 – second update," <https://www.ecdc.europa.eu/en/publicationsdata/considerations>, 2020, [Online; accessed March 23, 2020].
- [5] M. W. Fong, H. Gao, J. Y. Wong, J. Xiao, E. Y. Shiu, S. Ryu, and B. J. Cowling, "Nonpharmaceutical measures for pandemic influenza in nonhealthcare settings—social distancing measures," 2020.
- [6] ECDPC, "Considerations relating to social distancing measures in response to COVID-19 – second update," <https://www.ecdc.europa.eu/en/publicationsdata/considerations>, 2020, [Online; accessed March 23, 2020].
- [7] M. W. Fong, H. Gao, J. Y. Wong, J. Xiao, E. Y. Shiu, S. Ryu, and B. J. Cowling, "Nonpharmaceutical measures for pandemic influenza in nonhealthcare settings—social distancing measures," 2020.
- [8] F. Ahmed, N. Zviedrite, and A. Uzicanin, "Effectiveness of workplace social distancing measures in reducing influenza transmission: a systematic review," *BMC Public Health*, vol. 18, no. 1, p. 518, 2018.
- [9] W. O. Kermack and A. G. McKendrick, "Contributions to the mathematical theory of epidemics—i. 1927," 1991.
- [10] C. Eksin, K. Paarporn, and J. S. Weitz, "Systematic biases in disease forecasting—the role of behavior change," *Epidemics*, vol. 27, pp. 96–105, 2019.
- [11] M. Zhao and H. Zhao, "Asymptotic behavior of global positive solution to a stochastic SIR model incorporating media coverage," *Advances in Difference Equations*, vol. 2016, no. 1, pp. 1–17, 2016.
- [12] P. Alto, "Landing AI Named an April 2020 Cool Vendor in the Gartner Cool Vendors in AI Core Technologies," <https://www.yahoo.com/lifestyle/landing-ai-named-april-2020-152100532.html>, 2020, [Online; accessed April 21, 2020].
- [13] A. Y. Ng, "Curriculum Vitae," <https://ai.stanford.edu/ang/curriculum-vitae.pdf>.
- [14] L. AI, "Landing AI Named an April 2020 Cool Vendor in the Gartner Cool Vendors in AI Core Technologies," <https://www.prnewswire.com/news-releases/>, 2020, [Online; accessed April 22, 2020].
- [15] B. News, "China coronavirus: Lockdown measures rise across Hubei province," <https://www.bbc.co.uk/news/world-asia-china51217455>, 2020, [Online; accessed January 23, 2020].
- [16] N. H. C. of the People's Republic of China, "Daily briefing on novel coronavirus cases in China," <http://en.nhc.gov.cn/2020-03/20/c78006.htm>, 2020, [Online; accessed March 20, 2020].
- [17] K. Prem, Y. Liu, T. W. Russell, A. J. Kucharski, R. M. Eggo, N. Davies, S. Flasche, S. Clifford, C. A. Pearson, J. D. Munday et al., "The effect of control strategies to reduce social mixing on outcomes of the covid-19 epidemic in Wuhan, China: a modelling study," *The Lancet Public Health*, 2020.
- [18] C. Adolph, K. Amano, B. Bang-Jensen, N. Fullman, and J. Wilkerson, "Pandemic politics: Timing state-level social distancing responses to COVID-19," *medRxiv*, 2020.
- [19] K. E. Ainslie, C. E. Walters, H. Fu, S. Bhatia, H. Wang, X. Xi, M. Baguelin, S. Bhatt, A. Boonyasiri, O. Boyd et al., "Evidence of initial success for China exiting COVID-19 social distancing policy after achieving containment," *Wellcome Open Research*, vol. 5, no. 81, p. 81, 2020.
- [20] N. S. Pun and S. Agarwal, "Automated diagnosis of COVID-19 with limited posteroanterior chest X-ray images using fine-tuned deep neural networks," 2020.



INTERNATIONAL
STANDARD
SERIAL
NUMBER
INDIA



INTERNATIONAL JOURNAL OF INNOVATIVE RESEARCH

IN SCIENCE | ENGINEERING | TECHNOLOGY

 9940 572 462  6381 907 438  ijirset@gmail.com



www.ijirset.com

Scan to save the contact details