



International Journal of Innovative Research in Science Engineering and Technology (IJIRSET)

(A Monthly, Peer Reviewed, Refereed, Scholarly Indexed, Open Access Journal)



Impact Factor: 8.699

Volume 14, Issue 4, April 2025

Leveraging Machine Learning for Accurate Cardiovascular Event Prediction

R Durairam¹, K Srinivas², K Varshith Reddy³, P Prudhvi⁴, M Kav⁵

Department of Computer Science and Engineering, Mahendra Institute of Technology, Mahendrapuri,
Tamil Nadu, India

ABSTRACT - Heart diseases remain a leading cause of morbidity and mortality globally, necessitating innovative approaches for prediction and management. The prevalence of cardiovascular illnesses is rising due to an aging population and increasing risk factors like obesity and sedentary lifestyles. Despite advancements in medical knowledge, the complex nature of heart disorders, with various causes and risk factors, continues to challenge healthcare systems. Conventional risk assessment methods, based on clinical and demographic data, often lack the precision needed for personalized interventions. Machine learning (ML) techniques have emerged as promising tools to improve heart health outcomes by analyzing large datasets. ML can optimize treatment options, identify new risk factors, and uncover hidden patterns in diverse data sources, such as genetic information, wearable sensor data, imaging data, and electronic health records. This study focuses on three main areas: prediction modeling, risk factor identification, and translating ML findings into clinical practice. We aim to assess the effectiveness of ML algorithms in predicting cardiovascular risk, identifying irregularities early, and providing personalized therapy recommendations. Additionally, we aim to explore the potential obstacles to widespread integration of ML in cardiovascular healthcare, addressing issues like model interpretability, scalability, and ethical considerations. Our goal is to open the door for incorporating ML into standard healthcare practices, ensuring its ethical and responsible use. By fostering collaboration among researchers, clinicians, and policymakers, we envision a future where ML improves heart health outcomes and reduces the global burden of cardiovascular diseases. Furthermore, ML enables the development of patient-specific models that consider clinical, genetic, lifestyle, and environmental factors. These personalized approaches could enhance treatment outcomes, reduce adverse effects, and optimize resource allocation in healthcare settings. Through a thorough review of ML applications in heart health, we aim to provide insights into how these technologies can be effectively incorporated into clinical practice, transforming the management of cardiovascular diseases and improving patients' quality of life.

KEY WORDS: Machine learning, Monitoring, Data analysis.

I. INTRODUCTION

Heart diseases remain one of the leading causes of mortality worldwide, imposing a significant burden on healthcare systems and individual wellbeing. The prevalence of cardiovascular illnesses emphasizes how urgently novel strategies to address their effects on public health are required. Notwithstanding significant advancements in medical research and treatment approaches, there are still issues associated with the complex nature of heart health. The interaction of multiple risk factors makes it more difficult to accurately anticipate, diagnose and treat cardiovascular problems. These factors range from genetic predispositions to lifestyle choices like food and exercise. Therefore, there is an urgent demand for sophisticated techniques that can comprehend and treat heart illnesses more effectively. In recent years, the integration of machine learning techniques has emerged as a promising avenue to revolutionize the understanding and management of heart health. Large and diverse datasets can potentially be analysed by machine learning with never-before-seen speed and accuracy, revealing patterns and relationships that conventional statistical methods could miss. Machine learning makes it possible to create risk strategy tools, individualized treatment algorithms that are suited to the unique profiles of each patient, and predictive models by utilizing algorithms that are able to adapt and learn from data. There is great potential for improving heart health outcomes and lowering the burden of cardiovascular illnesses both globally and personally with this transition towards data-driven approaches. This research paper seeks to explore the transformative potential of machine learning in advancing heart health statistics. This study aims to provide a nuanced understanding of the current landscape and future directions in using artificial intelligence for cardiovascular care through a thorough synthesis of the most recent advancements in risk stratification, early detection, personalized

treatment optimization, and predictive 2 modelling. Through an analysis of the effectiveness, constraints, and moral implications of machine learning applications in cardiac care, this study aims to further the current conversation on the incorporation of cutting-edge technologies into clinical settings. In the end, the knowledge gained from this investigation may influence research priorities, influence policy choices, and ultimately enhance the lives of those afflicted with cardiovascular illnesses. The integration of machine learning in heart health not only holds promise for enhancing clinical decision-making but also for transforming preventive strategies and public health interventions. Machine learning algorithms are able to detect patterns, trends, and risk factors that are associated with the development of cardiovascular diseases at the population level by examining huge amounts of population data. This knowledge can help with focused treatments that support better lives and the early identification and treatment of risk factors like obesity, diabetes, and hypertension. Furthermore, machine learning approaches can support the creation of novel digital health solutions, such as wearable technology and smartphone applications, enabling people to take control of their lifestyle and instantly monitor their heart health. Machine learning has the potential to trigger a paradigm change toward proactive, personalized, and community-centred approaches to cardiovascular disease prevention and management by bridging the gap between clinical practice and public health initiatives. However, the adoption of machine learning in heart health also presents several challenges that must be addressed to realize its full potential. These difficulties include problems with privacy, data quality, and machine learning model interpretability. In order to prevent bias and mistakes in prediction models, it is essential to guarantee the dependability and integrity of the data used to train machine learning algorithms. Furthermore, maintaining trust and ethical standards in the use of health data depends critically on protecting patient privacy and adhering to legal frameworks like the Health Insurance Portability and Accountability Act. Furthermore, interpretation of some machine learning models' judgments might be difficult because to their "black-box" character, which raises questions regarding accountability and transparency in clinical decision making. To establish strong governance frameworks and best practices for the ethical deployment of machine learning in heart health, physicians, data scientists, policymakers, and ethicists must collaborate together to address these difficulties.

OBJECTIVE

The objective of the project "Advancing Cardiovascular Health through Machine Learning" is to leverage the power of machine learning techniques to enhance our understanding of cardiovascular diseases (CVD) and improve patient outcomes. This project aims to address various aspects of CVD, including prevention, diagnosis, treatment, and management, through the application of advanced computational algorithms and data analytics.

Here's a breakdown of the objectives and key areas of focus within this project:

1. Risk Prediction and Prevention: One major objective is to develop machine learning models that can accurately predict an individual's risk of developing cardiovascular diseases. By analyzing large datasets containing clinical, genetic, lifestyle, and environmental factors, these models can identify patterns and risk factors that may predispose individuals to CVD. This information can then be used to develop personalized prevention strategies, such as lifestyle modifications or early interventions, to mitigate the risk of developing CVD.
2. Early Detection and Diagnosis: Another important goal is to improve the early detection and diagnosis of cardiovascular diseases using machine learning techniques. By analyzing medical imaging data (such as MRI, CT scans, and echocardiograms) and patient health records, machine learning algorithms can assist healthcare providers in identifying early signs of CVD, such as plaque buildup in arteries or abnormalities in heart function. Early detection enables timely intervention and treatment, potentially preventing the progression of the disease and reducing associated morbidity and mortality.

II. PROPOSED METHOD

1. Project Planning and Definition: Define the scope, objectives, and goals of the project. Establish a multidisciplinary team comprising data scientists, clinicians, researchers, and domain experts. Conduct a comprehensive literature review to understand the current state-of-the-art in cardiovascular health research and machine learning applications.
2. Data Collection and Acquisition: Identify and acquire diverse datasets related to cardiovascular health, including clinical records, medical imaging data, genetic information, lifestyle factors, and environmental data.
3. Feature Engineering and Selection: Perform feature engineering to extract relevant features from raw data sources, including clinical variables, imaging biomarkers, genetic markers, and behavioural factors. 19 Explore techniques for

dimensionality reduction, feature selection, and feature transformation to enhance the predictive power and interpretability of machine learning models.

4. Model Development and Training: Develop machine learning models for various tasks, such as risk prediction, disease classification, treatment response prediction, and outcome forecasting. Experiment with different algorithms and techniques, including supervised learning, unsupervised learning, and deep learning approaches. Train and validate machine learning models using labelled data, cross-validation techniques, and appropriate evaluation metrics to assess model performance and generalization.

5. Clinical Integration and Validation: Integrate machine learning models into clinical workflows, decision support systems, and healthcare applications to assist clinicians in risk assessment, diagnosis, treatment planning, and patient management.

6. Deployment and Implementation: Deploy machine learning models in production environments, including hospitals, clinics, and telehealth platforms, to enable real-time inference and decision-making.

III. RESULTS AND DISCUSSION

Present the results of statistical analysis in a clear and concise manner.

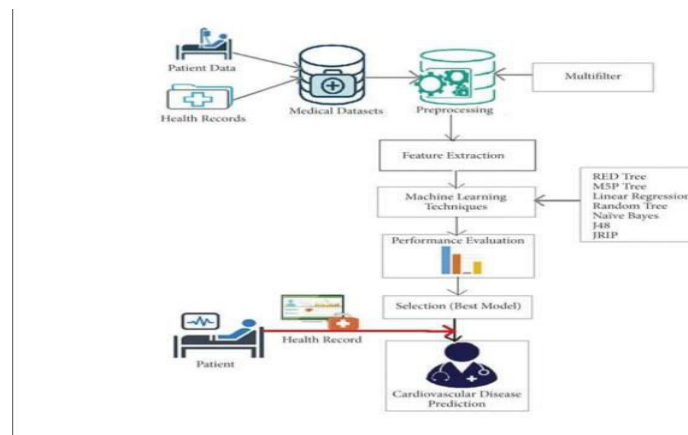


Fig.No.3.1 Internal or Component design structure

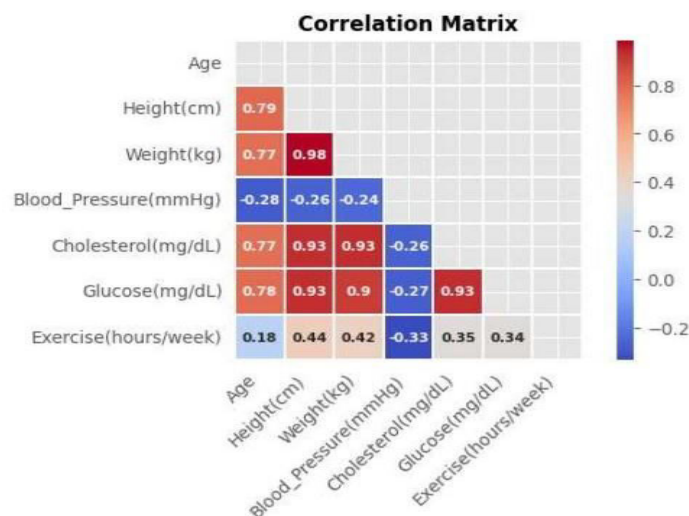


Fig.No.4.1 Correlation Matrix

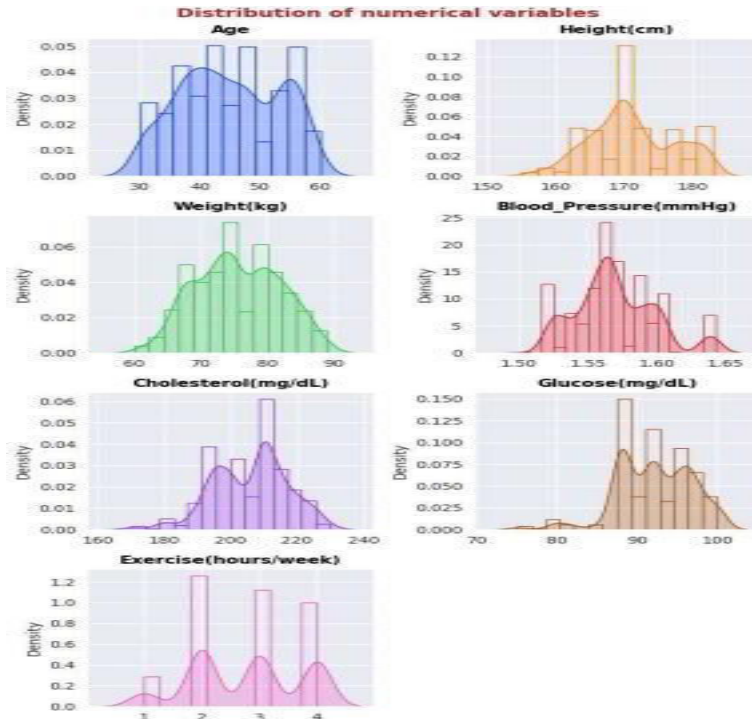


Fig.No.4.2 Distribution of numerical variables

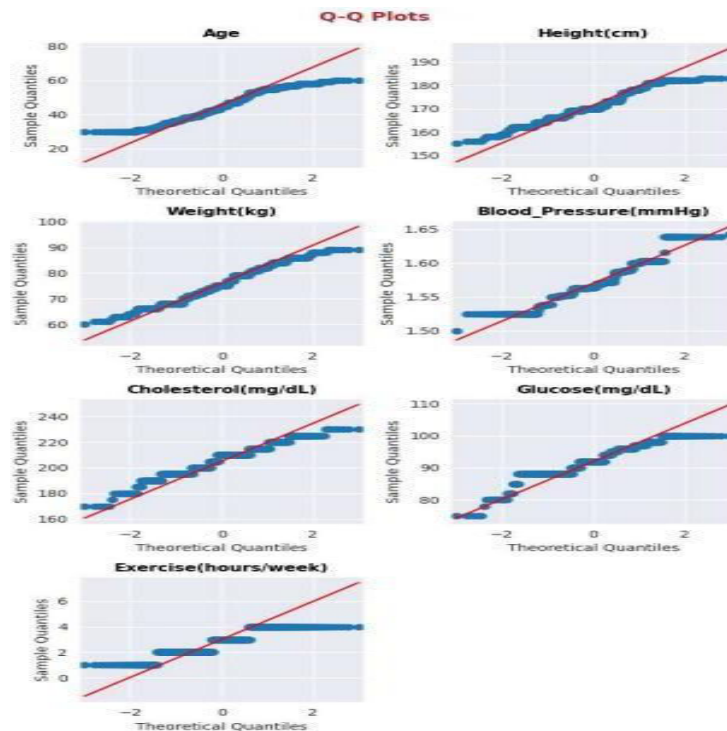


Fig.No.4.3 Q-Q Plots

IV. CONCLUSION

Leveraging machine learning in advancing cardiovascular health presents a transformative approach to tackling the complexities of cardiovascular diseases, from risk prediction to treatment optimization. By harnessing the power of data-driven insights and advanced analytics, machine learning offers unprecedented opportunities to improve patient outcomes, enhance clinical decision-making, and advance our understanding of cardiovascular pathophysiology. Through the development of predictive models, diagnostic tools, and clinical decision support systems, machine learning empowers healthcare providers with actionable insights and personalized interventions tailored to individual patient needs. Moreover, machine learning enables the integration of multi-modal data sources, including clinical records, imaging studies, genomic data, and wearable sensors, facilitating comprehensive patient profiling and precision medicine approaches in cardiology practice. However, the successful implementation of machine learning in cardiovascular health requires careful consideration of ethical, regulatory, and privacy concerns, as well as collaboration among multidisciplinary teams of researchers, clinicians, data scientists, and stakeholders. Ultimately, by embracing innovation, collaboration, and evidence-based practice, machine learning holds immense promise for advancing cardiovascular health and ushering in a new era of preventive, predictive, and personalized medicine in cardiology.

REFERENCES

1. McHugh ML. The odds ratio: calculation, usage, and interpretation. *BiochemMed.* 2009;19:120–6.<http://dx.doi.org/10.11613/BM.2009.011>.
2. Simundić AM. Bias in research. *Biochem Med.* 2013;23:12–5.<http://dx.doi.org/10.11613/BM.2013.003>.
3. Mantel N, Haenszel W. Statistical aspects of the analysis of data from retrospective studies of disease. *J Natl Cancer Inst.* 1959;22:719–48.
4. Bendel RB, Afifi AA. Comparison of Stopping Rules in Forward “Stepwise” Regression. *J Am Stat Assoc.* 1977;72:46–53.
5. Costanza MC, Afifi AA. Comparison of Stopping Rules in Forward Stepwise Discriminant Analysis. *J Am Stat Assoc.* 1979;74:777–85,<http://dx.doi.org/10.1080/01621459.1979.1048.1030>.



INTERNATIONAL
STANDARD
SERIAL
NUMBER
INDIA



INTERNATIONAL JOURNAL OF INNOVATIVE RESEARCH

IN SCIENCE | ENGINEERING | TECHNOLOGY

 9940 572 462  6381 907 438  ijirset@gmail.com



www.ijirset.com

Scan to save the contact details