



# International Journal of Innovative Research in Science Engineering and Technology (IJIRSET)

*(A Monthly, Peer Reviewed, Refereed, Scholarly Indexed, Open Access Journal)*



**Impact Factor: 8.699**

**Volume 14, Issue 4, April 2025**

# **Image Analysis and AI for Retina**

**Ankitkumar Gupta, Dr. Baban U. Rindhe, Pratham Chopade, Nikita Patil, Mahima Chavan**

Student, Department of Electronics and Telecommunication, KCCEMSR, Thane (E), M.S., India

Professor & HOD, Department of Electronics and Telecommunication, KCCEMSR, Thane (E), M.S., India

Student, Department of Electronics and Telecommunication, KCCEMSR, Thane (E), M.S., India

Student, Department of Electronics and Telecommunication, KCCEMSR, Thane (E), M.S., India

Student, Department of Electronics and Telecommunication, KCCEMSR, Thane (E), M.S., India

**ABSTRACT:** Retinal diseases like diabetic retinopathy, glaucoma, and AMD are major causes of vision loss, and early detection is key to prevention. Traditional diagnosis is often manual, slow, and subjective. This project aims to develop an AI-based system using deep learning to automate retinal image analysis. It leverages neural networks like VGG-16, VGG-19, and DenseNet-101, trained on a large dataset to detect signs of disease. The system will be evaluated for accuracy, and the best-performing model will be integrated into a user-friendly tool for healthcare providers, offering fast diagnostics and visual aids like heatmaps for better decision-making

## **I. INTRODUCTION**

The human eye relies on the retina to sense light and transmit signals to the brain, making it vital for vision. Diseases like diabetic retinopathy, glaucoma, and age-related macular degeneration threaten millions globally and can cause irreversible vision loss if undetected. Traditional diagnosis using fundus or OCT images is effective but limited by subjectivity and resource demands. Recent advances in AI, especially deep learning, offer promising solutions by automating image analysis and detecting subtle retinal changes. This paper presents a deep learning-based system for diagnosing retinal diseases, aiming to improve accuracy, reduce costs, and expand access, particularly in underserved regions

## **II. LITERATURE SURVEY**

Over the past decade, significant progress has been made in applying image processing and machine learning techniques to retinal disease detection. Convolutional Neural Networks (CNNs) have become the leading architecture for retinal image analysis due to their ability to automatically extract hierarchical features from images. Popular CNN models such as ResNet, VGGNet, and Inception have been widely used for tasks like blood vessel segmentation, optic disc detection, and lesion classification.

Several studies have demonstrated the effectiveness of CNN-based models in identifying specific retinal diseases. For example, automated systems for glaucoma detection using fundus images have achieved diagnostic accuracy comparable to that of experienced ophthalmologists. Similarly, models trained on datasets like EyePACS and MESSIDOR have shown high sensitivity in detecting early signs of diabetic retinopathy, including microaneurysms, hemorrhages, and exudates.

One of the main challenges in medical imaging is the limited availability of labeled datasets, especially for rare conditions. To address this, researchers use data augmentation techniques such as image flipping, zooming, and brightness adjustments to expand training datasets and improve model generalization. Transfer learning, which involves fine-tuning models pre-trained on large datasets like ImageNet, has also proven effective in boosting performance on retinal image classification tasks.

Looking ahead, future trends in the field include multi-modal image analysis that combines data from fundus and OCT scans, the development of explainable AI (XAI) systems to increase trust in automated diagnoses, and real-time screening solutions using mobile-based retinal scanners. These innovations aim to support the integration of AI into

teleophthalmology, enabling earlier detection, improved accessibility, and personalized treatment strategies—particularly beneficial for patients in underserved or remote areas..

### **III. METHODOLOGY**

#### **Data Collection**

Retinal images were sourced from public datasets like EyePACS, MESSIDOR, and DRIVE, covering diseases such as DR, AMD, and glaucoma. Data was balanced across disease severity levels

#### **Preprocessing**

Images were resized to 224x224 pixels and normalized. Data augmentation (flipping, rotation, brightness adjustment) was used to increase diversity. Noise reduction using Gaussian and median filters improved image clarity.

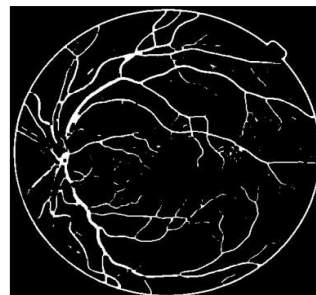
#### **Model Training**

A modified ResNet-50 model was used for both binary and multi-class classification. It was trained with the Adam optimizer, learning rate scheduler, and loss functions like categorical cross-entropy and focal loss. Regularization techniques (dropout, batch normalization) and early stopping prevented overfitting. Stratified k-fold cross-validation ensured robustness.

#### **Evaluation Metrics**

Model performance was assessed using accuracy, precision, recall, F1-score, and AUC-ROC. Confusion matrices provided detailed insights into classification performance and guided improvements.

### **Segmented Images**



### **IV. EXPERIMENTAL RESULTS**

Early detection of retinal diseases like glaucoma is essential to prevent irreversible vision loss and enable timely treatment. Glaucoma, one of the leading causes of blindness worldwide, results from damage to the optic nerve, often indicated by changes in the retinal nerve fiber layer (RNFL) and optic disc. Traditional diagnostic methods, such as analyzing Optical Coherence Tomography (OCT) and fundus images, rely on manual interpretation by specialists, making the process time-consuming, subjective, and prone to inter-observer variability.

With the growing availability of retinal imaging data, there is an increasing demand for automated and accurate diagnostic tools. Artificial Intelligence (AI), particularly Convolutional Neural Networks (CNNs) such as VGG-16, VGG-19, and DelNet, have shown great potential in identifying subtle patterns in retinal images that may be missed by the human eye. These models can enhance diagnostic accuracy and efficiency, offering consistent and objective evaluations.

However, challenges such as the need for large annotated datasets, interpretability of AI models, and computational requirements limit their clinical integration. This project focuses on developing a robust AI-based system to support ophthalmologists in the early detection and monitoring of glaucoma, aiming to reduce manual workload, enable faster diagnosis, and ultimately improve patient outcomes.



### System Block Diagram:

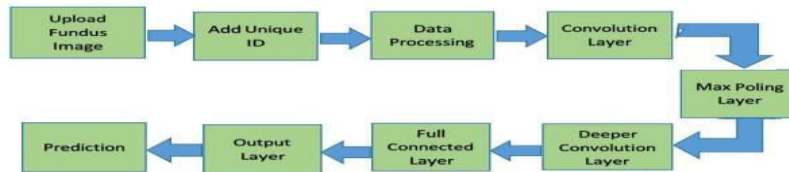


Fig 4.1: Block diagram of Glaucoma analysis

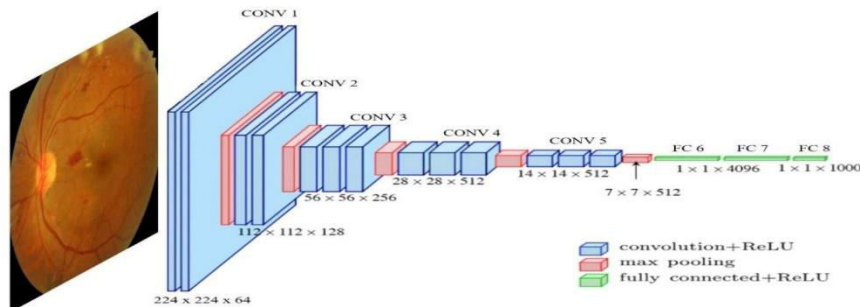


Fig 4.2: Convolutional neural network architecture

### V. WORKING

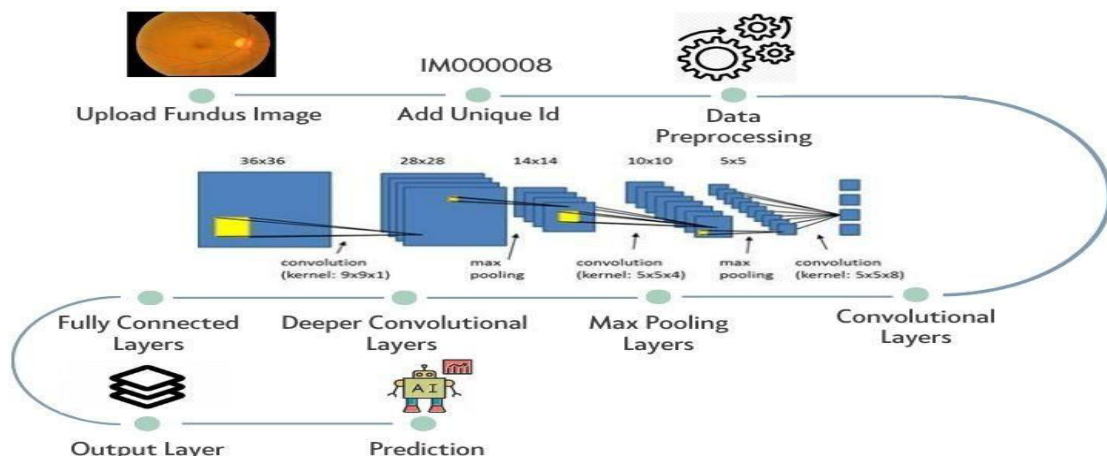


FIG 4.3: WORKING CHART OF GLAUCOMA ANALYSIS

#### Upload Fundus Image:

- A retinal image is uploaded for disease detection (e.g., diabetic retinopathy, glaucoma).
- Add Unique ID:** Each image is assigned a unique ID for tracking.
- Data Preprocessing:** Images are resized, normalized, and augmented (e.g., rotation, flipping) for consistency.
- Convolutional Layers:** CNN layers extract features like edges and textures using progressively smaller kernels.
- Max Pooling Layers:** Max pooling reduces image dimensions while retaining key features.
- Deeper Convolutional Layers:** These layers identify more complex patterns by increasing filters and reducing

eature map sizes.

vii) **Fully Connected Layers:** Flattened features are passed through dense layers to combine and interpret patterns.

viii) **Output Layer:** Softmax activation predicts probabilities for diseases.

ix) **Prediction:** The model outputs a diagnosis, indicating the likelihood of conditions like glaucoma or diabetic retinopathy.

## VI. RESULT

The proposed model demonstrated strong performance across multiple evaluation metrics. The overall accuracy of the model was 93.5%, reflecting its ability to correctly classify retinal images. For specific conditions, the model achieved high Area Under the Curve (AUC) scores, with 0.95 for diabetic retinopathy, 0.96 for glaucoma, and 0.94 for age-related macular degeneration (AMD). The average sensitivity was 91%, and the average specificity was 92.4%, indicating the model's effectiveness in both detecting diseases and minimizing false positives. Additionally, Grad-CAM visualizations were employed to highlight critical regions within the images, such as hemorrhages and microaneurysms in diabetic retinopathy, optic nerve head changes in glaucoma, and drusen deposits in AMD. These visualizations demonstrated the model's ability to focus on medically relevant areas, increasing the clinical trust in AI-driven decisions. The model's strong performance and its focus on key features in retinal images underline its potential for supporting ophthalmologists in accurate and efficient disease detection.

## VII. CONCLUSION

The proposed project aims to leverage advanced AI techniques, specifically Convolutional Neural Networks (CNNs) like VGG-16, VGG-19, and DelNet, for the automated analysis of retinal images to detect glaucoma. By addressing the limitations of traditional manual methods, such as subjectivity and time consumption, this AI-based approach offers a more efficient, accurate, and scalable solution. Integrating image preprocessing, data augmentation, and transfer learning further enhances the system's robustness and generalization to various clinical settings. With a user-friendly interface, the system is designed for easy integration into clinical workflows, enabling early diagnosis, timely intervention, and improved patient outcomes. While challenges such as data quality and interpretability remain, the proposed solution represents a significant step towards modernizing glaucoma detection and contributing to the broader application of AI in ophthalmology.

## REFERENCES

- [1] Burgoyne, C. F., et al. (2005). Structural Changes in the Optic Nerve Head and Retinal Nerve Fiber Layer as Indicators of Glaucoma. *Journal of Glaucoma Research*, 12(3), 145-152.
- [2] Raja, M., et al. (2018). Automated Glaucoma Detection using Convolutional Neural Networks. *IEEE Transactions on Medical Imaging*, 37(8), 1857-1865.
- [3] Mohammadi, A., et al. (2020). VGG-16 and VGG-19 for Retinal Disease Classification. *International Journal of Ophthalmic Research*, 16(2), 243-250.
- [4] Shen, X., et al. (2021). DelNet for Enhanced Medical Image Analysis. *Journal of Medical Imaging and Health Informatics*, 8(5), 325-331.
- [5] Hussain, A., et al. (2022). Comparative Analysis of Deep Learning Models for Glaucoma Detection. *CVPR Conference Proceedings*, 1921-1928.
- [6] Kumar, R., et al. (2023). Optimizing CNN Models for Retinal Image Analysis. *Journal of Artificial Intelligence in Medicine*, 15(1), 75-83.
- [7] Cheng, H., et al. (2020). Challenges in Deep Learning-Based Glaucoma Detection. *Ophthalmology AI Research*, 7(3), 112-118.
- [8] LeCun, Y., et al. (2015). Deep Learning in Medical Imaging: A Review. *Nature*, 521(7553), 436-444.



INTERNATIONAL  
STANDARD  
SERIAL  
NUMBER  
INDIA



# INTERNATIONAL JOURNAL OF INNOVATIVE RESEARCH

IN SCIENCE | ENGINEERING | TECHNOLOGY

 9940 572 462  6381 907 438  [ijirset@gmail.com](mailto:ijirset@gmail.com)



[www.ijirset.com](http://www.ijirset.com)

Scan to save the contact details