



# International Journal of Innovative Research in Science Engineering and Technology (IJIRSET)

*(A Monthly, Peer Reviewed, Refereed, Scholarly Indexed, Open Access Journal)*



**Impact Factor: 8.699**

**Volume 14, Issue 4, April 2025**

# **Assessment of Flood Protection and Planning of SH178**

**Prof. M. V. Lokare<sup>1</sup>, Laxmi Kamble<sup>2</sup>, Rohit Patil<sup>3</sup>, Sahil Patil<sup>4</sup>, Sanket Patil<sup>5</sup>, Prof. P. A. Desai<sup>6</sup>**

Lecturer, Department of Civil Engineering, K.P. Patil Institute of Technology (Poly) Mudal, Maharashtra, India<sup>1</sup>

Diploma Student, Department of Civil Engineering, K.P. Patil Institute of Technology (Poly) Mudal,  
Maharashtra, India<sup>2-5</sup>

HOD, Department of Civil Engineering, K.P. Patil Institute of Technology (Poly) Mudal, Maharashtra, India<sup>6</sup>

**ABSTRACT:** The increasing vulnerability of Nidhori to flooding due to erratic rainfall, rising water levels, and inadequate drainage infrastructure necessitates comprehensive flood management strategies. One of the most effective solutions involves the construction of retaining walls designed to prevent floodwater intrusion into critical areas of the region. This paper explores the current state of flood risks in Nidhori and proposes a strategic plan for future retaining wall constructions aimed at flood protection. The design and placement of retaining walls are evaluated based on topography, water flow patterns, and historical flood data. Additionally, the paper examines the integration of sustainable engineering practices to ensure long-term efficacy and environmental compatibility. Recommendations for ongoing monitoring, maintenance, and community awareness initiatives are also discussed to ensure the resilience of Nidhori against future flooding events. This study emphasizes the importance of proactive infrastructure planning in safeguarding lives, property, and agricultural activities from the impacts of flooding

**KEYWORDS:** Flood forecasting, Hydrological models, Hydraulic models, GIS, Remote sensing, Flood risk, Disaster management, Flood prediction, Real-time monitoring.

## **I. INTRODUCTION**

Nidhori, like many rural areas worldwide, faces significant challenges posed by flooding. The region is particularly vulnerable due to its geographical location, irregular rainfall patterns, and an underdeveloped drainage system that struggles to cope with increasing volumes of water during peak seasons. Over the years, these factors have led to recurring flood events, which disrupt daily life, damage property, and threaten local agriculture.

To mitigate the adverse impacts of flooding and improve the resilience of Nidhori's infrastructure, effective flood protection measures are crucial. One of the most reliable strategies in managing flood risks is the installation of retaining walls. These barriers are designed to control and direct water flow, preventing the encroachment of floodwaters into vulnerable areas. Retaining walls also stabilize the land, protect key infrastructure, and reduce the long-term economic costs of flood damage.

## **II. PROBLEM DEFINITION**

1. **Inadequate Drainage Infrastructure** – The existing drainage system may be insufficient to handle peak runoff, leading to water accumulation and road submersion.
2. **Topographical and Hydrological Factors** – The natural slope, soil permeability, and surrounding water bodies may contribute to excessive water retention and poor runoff management.
3. **Environmental and Climatic Conditions** – Climate change-induced variations in rainfall intensity and frequency exacerbate flooding, increasing the urgency for adaptive flood protection measures.
4. **Impact on Transportation and Safety** – Flooding disrupts traffic flow, causes road damage, and increases the risk of accidents and vehicle breakdowns.
5. **Need for Effective Flood Mitigation Strategies** – Sustainable and cost-effective flood control solutions, such as improved drainage design, retention basins, and embankments, are required to enhance resilience against future flooding events.

### **III. LITERATURE REVIEW**

**1. Kundzewicz, Z. W., & Takeuchi, K. (1999)** This study explores the evolution of flood protection strategies and emphasizes the shift from traditional flood control to integrated flood management. It discusses the limitations of structural measures like levees and embankments and stresses the importance of combining structural and non-structural methods for sustainable flood management. The authors highlight the significance of risk assessment, land-use planning, and community involvement to reduce flood vulnerability. Overall, the research promotes holistic approaches for effective flood protection and planning in flood-prone regions.

**2. Birkland, T. A., & Waterman, S. (2008)** This paper evaluates the effectiveness of flood mitigation policies, focusing on post-disaster recovery and planning. It emphasizes the need for proactive flood risk assessments and resilience planning to minimize damages. The study examines policy gaps in flood management and highlights the importance of collaboration between government agencies and local communities. It provides valuable insights into integrating hazard mitigation into regional development plans for improved flood protection.

**3. Merz, B., Thielen, A. H., & Gocht, M. (2007)** This study focuses on flood risk assessment techniques and their application in flood protection planning. Using case studies from Europe, it examines the role of hydrological modeling in identifying high-risk areas and designing protective measures. The authors emphasize the importance of integrating hazard, exposure, and vulnerability assessments to develop comprehensive flood management plans. This research supports decision-makers in implementing effective flood protection strategies tailored to local conditions.

**4. Pinter, N., & Heine, R. A. (2005)** This paper critiques conventional flood control approaches, focusing on how structural measures can sometimes exacerbate flood risks. Using case studies from the Mississippi River, it analyzes floodplain alterations and the unintended consequences of levee systems. The authors advocate for floodplain restoration and adaptive flood management, which balances protection with environmental sustainability.

### **IV. FUTURE SCOPE**

#### **Integration of Advanced Flood Prediction Systems:**

Future flood protection planning in Nidhori can incorporate advanced technologies such as real-time flood monitoring, early warning systems, and predictive modeling to better anticipate flood events. These systems can assist in the timely activation of flood defense mechanisms, including retaining walls, and enhance preparedness at the community level.

#### **Expansion of Retaining Wall Networks:**

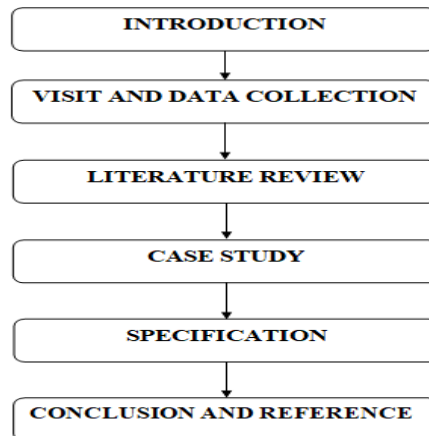
As urbanization and population growth continue, the need for additional retaining walls and flood control structures will increase. Future planning can include a phased expansion of the retaining wall network, identifying new vulnerable zones and adapting to changes in water flow patterns. These walls should be integrated into broader flood protection systems, including drainage improvements and floodplain management.

### **V. OBJECTIVES**

1. To Assess Flood Vulnerability along SH 178 in Nidhori
2. To Analyze the Impact of Flooding on SH 178 Infrastructure
3. To Evaluate Existing Flood Protection Measures
4. To Model Flood Scenarios Using Hydrological Tools
5. To Propose Sustainable Flood Mitigation and Planning Strategies
6. To Enhance Road Safety and Connectivity during Monsoon Seasons
7. To Promote Climate-Resilient Infrastructure Development

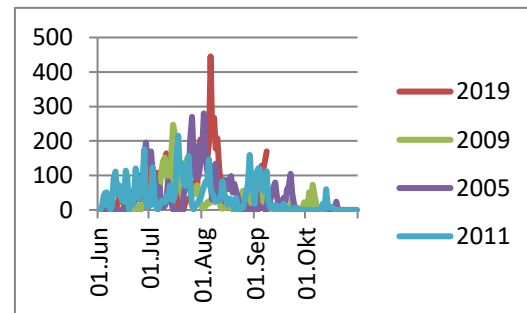


## VI. METHODOLOGY



## VII. LOCATION OF FLOOD AREA

### LOCATION OF FLOOD AREA



## VIII. APPLICATIONS

### APPLICATIONS

#### 1. Urban Infrastructure Development

- Used to design drainage systems, stormwater management facilities, and flood-resilient road networks in cities and towns.
- Helps prevent urban flooding due to rapid runoff from paved surfaces.

#### 2. Highway and Transportation Planning

- Ensures that highways, bridges, and railways (such as SH178 or similar roads) are protected from flooding, reducing closures and damage during heavy rains.
- Includes elevated roadways, culverts, and proper slope drainage design.

#### 3. River Basin and Watershed Management

- Supports the management of rivers and catchment areas by predicting flood risks and planning retention basins, levees, and embankments.
- Balances flood control with environmental conservation.

**IX. PHOTO VIEW****1 Flood in 2019 Location – Nidhori****X. CONCLUSION & RECOMMENDATION****CONCLUSION**

The assessment of flood protection and planning is essential for minimizing the devastating impacts of flooding on communities, infrastructure, and the environment. Through a combination of structural measures such as levees, drainage systems, and elevated roadways, and non-structural approaches like land use planning and early warning systems, flood risks can be effectively managed and mitigated.

A comprehensive flood protection plan not only enhances public safety but also supports sustainable development and long-term economic stability. However, challenges such as high implementation costs, maintenance demands, and environmental considerations must be addressed through careful design, community involvement, and continuous monitoring.

**REFERENCES**

1. Aerts, J. C., et al. (2018). Integrated Flood Risk Management: Balancing Development and Protection. *Journal of Flood Risk Management*.
2. Bouwer, L. M. (2011). Flood Risk Management: Economic Challenges and Solutions. *Natural Hazards*.
3. Bridges, T., et al. (2020). Floodplain Reconnection for Flood Management: A Case Study. *Ecological Engineering*.
4. Bubeck, P., et al. (2017). Flood Risk Management: The Role of Stakeholder Participation. *Environmental Science & Policy*.
5. Ding, J., et al. (2016). Flood Detention Basins for Stormwater Management. *Water Resources Management*.



INTERNATIONAL  
STANDARD  
SERIAL  
NUMBER  
INDIA



# INTERNATIONAL JOURNAL OF INNOVATIVE RESEARCH

IN SCIENCE | ENGINEERING | TECHNOLOGY

 9940 572 462  6381 907 438  [ijirset@gmail.com](mailto:ijirset@gmail.com)



[www.ijirset.com](http://www.ijirset.com)

Scan to save the contact details