



International Journal of Innovative Research in Science Engineering and Technology (IJIRSET)

(A Monthly, Peer Reviewed, Refereed, Scholarly Indexed, Open Access Journal)



Impact Factor: 8.699

Volume 14, Issue 6, June 2025

MindFul Haven: Mental Health Support ChatBot

**Shashank Sakilam¹, Mashamina Rohan², Mr.P.Satya Shekar Varma³, Dr. K. Rajitha⁴,
R.Mohan Krishna Ayyappa⁵**

Student, Computer Science and Engineering, Mahatma Gandhi Institute of Technology, Hyderabad, India¹

Student, Computer Science and Engineering, Mahatma Gandhi Institute of Technology, Hyderabad, India²

Assistant Professor, Computer Science and Engineering, Mahatma Gandhi Institute of Technology, Hyderabad, India³

Assistant Professor, Computer Science and Engineering, Mahatma Gandhi Institute of Technology, Hyderabad, India⁴

Assistant Professor, Computer Science and Engineering, Mahatma Gandhi Institute of Technology, Hyderabad, India⁵

ABSTRACT: The project titled Mindful Haven focuses on building an AI-powered mental health support chatbot that provides immediate and empathetic assistance in a confidential, nonjudgmental environment. The system analyses user input to detect emotional cues commonly associated with stress, anxiety, and depression. By leveraging intelligent natural language understanding, the chatbot delivers personalized responses tailored to individual emotional states and maintains a record of emotional progress to recommend evolving self-care strategies. A key objective of the system is to address the reluctance many individuals face in sharing their mental health concerns in face-to-face interactions due to social stigma, fear of judgment, or anxiety. Through its discreet and supportive digital interface, Mindful Haven aims to foster emotional well-being and encourage open expression in a safe virtual space.

KEYWORDS: AI-Powered Chatbot, Judgement-Free Space, Mental Health Support, Emotional Analysis, Stress, Anxiety.

I. INTRODUCTION

Mental health support remains a growing concern in today's fast-paced society, where individuals increasingly experience stress, anxiety, and depression but hesitate to seek help due to stigma or discomfort with face-to-face interactions. While digital solutions exist, they often lack personalization, emotional intelligence, and safety protocols. Mindful Haven, an AI-powered mental health chatbot, addresses these challenges by offering an accessible and judgment-free platform for emotional expression. Integrating Firebase Authentication, Gemini API for sentiment analysis, and responsive journaling guidance, the system provides secure, real-time support. With features like mood tracking, gamification, and crisis detection, Mindful Haven offers a proactive and engaging experience designed to promote emotional well-being and expand access to mental health resources for diverse users.

II. LITERATURE SURVEY

Xi Fan et al. [1] developed a knowledge-guided chatbot using LLMs and retrieval learning to deliver personalized psychotherapeutic support. Challenges include data privacy and ethical AI deployment.

Yifan Hu et al. [2] evaluated a chatbot aiding young adults with depressive symptoms, showing emotional improvement through a controlled trial. Broader demographic validation is still needed.

Vibhavi K et al. [3] explored AI chatbots with cognitive behavioral techniques for scalable emotional care. Risks of oversimplification and limited integration with clinical systems were noted.

Colm Sweeney et al. [4] analysed mental health professionals' views on AI chatbots, citing benefits like 24/7 support. Concerns included lack of empathy and emotional understanding.

Jean Pierre Nayinzira et al. [5] introduced SentimentCareBot, blending sentiment analysis and retrieval generation for better engagement. Difficulty handling nuanced emotions remains a limitation.

Sunita Patil et al. [6] proposed an ML-based system for early cognitive impairment detection for chatbot integration. Model accuracy and real-time conversational use require refinement.

Rayan Taher et al. [7] assessed digital mental health safety through user feedback, identifying transparency and trust as key. Self-reporting bias limits generalizability.
Asma Ghandeharioun et al. [8] developed EMMA, an emotion-aware chatbot using mobile sensors for timely well-being prompts. Limited sample size and sensor dependency restrict applicability.

III. PROPOSED METHODOLOGY AND DISCUSSION

3.1 System Architecture:

The Mindful Haven system is built to ensure privacy, emotional intelligence, and user accessibility for mental health support. Its architecture leverages a cloud-based, serverless design combining modern AI services to deliver secure and responsive interactions.

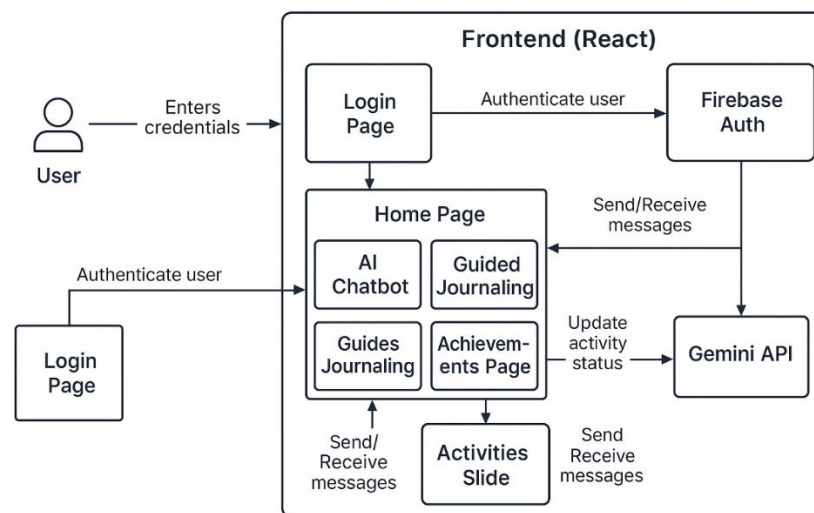


Figure 1: Architecture of Mindful Haven

- The Mindful Digital Haven platform features a patient dashboard where users can log in, interact with an AI-powered chatbot using the Gemini API, track mood changes, complete guided journaling exercises, and mark progress through gamified badges and activities.
- The admin interface supports content moderation, activity insights, and supervision of emergency response triggers, ensuring the platform maintains a safe and responsive user environment.
- Firebase handles authentication, real-time database storage for user inputs and progress tracking, while Gemini API provides contextual sentiment-aware responses, enabling personalized wellness support.

3.2 Process Flow

The Mindful Digital Haven process starts when a user accesses the website on a browser and logs in using email and password via Firebase Authentication. Based on successful authentication, the user is redirected to the Home Page. From there, users can interact with the AI chatbot, record moods, complete guided journaling exercises, and view their achievements. The chatbot uses the Gemini API for response generation and emotional analysis, while Firebase handles secure data storage and user activity updates. If a user attempts to access features without authentication, access is denied and they are redirected to the login page to ensure session security.

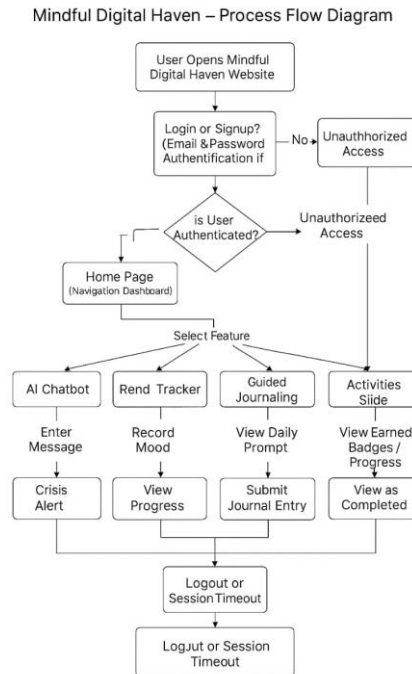


Figure 2: Process Flow Diagram

3.3 Methodology

The proposed Mindful Digital Haven system adopts a modular and user-centric approach to deliver empathetic mental health support through an AI-powered platform. It begins with secure login using Firebase Authentication, granting access to a personalized dashboard for each user. Core features include an AI chatbot powered by Gemini API for emotional analysis and support, guided journaling with daily prompts, mood tracking, and interactive self-care activities. All user interactions and emotional logs are stored in Firebase Realtime Database, ensuring low-latency updates and real-time feedback. Gamified elements like badges and progress tracking enhance engagement and motivation. The platform also supports multilingual access via i18next, making it inclusive and accessible to a broad audience. Built using React and TypeScript, the design is responsive, modular, and optimized for reliable use across devices and varying network conditions.

3.4 Implementation

The Mindful Digital Haven platform is implemented as a responsive, secure mental health support system using modern web technologies. It integrates Firebase Authentication, Gemini API, Firebase Firestore, and session-based logic to deliver seamless chatbot interaction, mood tracking, journaling, and self-care features. The system is lightweight, modular, and optimized for emotional responsiveness and real-time engagement.

- Built using React.js with TypeScript for a component-based, scalable frontend and smooth user experience.
- Tailwind CSS ensures mobile responsiveness and clean, accessible UI design.
- Firebase Authentication provides secure login and session control with email/password credentials.
- Firebase Firestore handles real-time data storage for mood logs, chat history, journaling entries, and achievements.
- Gemini API drives the AI chatbot for natural language understanding, emotion detection, and personalized response generation.

3.5 Discussion

The platform is designed to address the need for accessible and stigma-free mental health support. Firebase Authentication enables secure and simple login, ensuring user privacy and data protection across all features.

The Gemini-powered AI chatbot delivers empathetic, emotion-aware responses in real time, promoting user engagement and emotional self-awareness. Mood tracking and guided journaling features offer structured outlets for reflection, helping users manage stress, anxiety, and sadness more effectively. Multi-language support via i18next enhances inclusivity, allowing users from diverse backgrounds to engage with the platform.

IV. EXPERIMENTAL RESULTS

4.1 Chat Interface

The dashboard allows users to engage with the AI chatbot, send messages, and receive personalized emotional support. It was tested for responsiveness, real-time feedback, and secure session-based interactions.

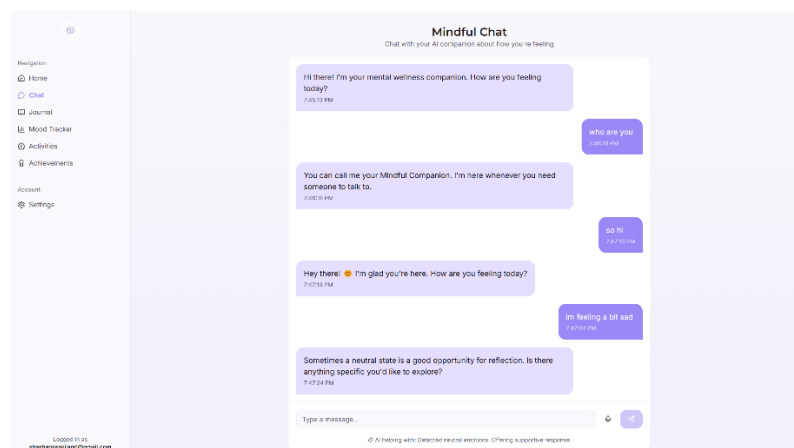


Figure 1: Shows the UI of chatbot.

4.2 Speech to Text:

Users have the option to communicate with the chatbot using voice input, enhancing accessibility and convenience. This feature utilizes speech-to-text technology to convert spoken language into text, allowing users to express their emotions more naturally.

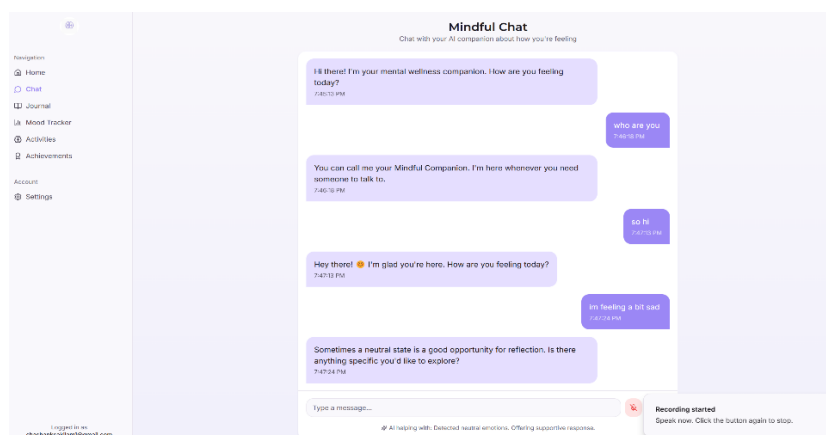


Figure 2: shows user recording his speech to chat with the chatbot.

4.3 Journaling :

Enables users to journal emotions daily with personalized prompts. Designed to support self-reflection and tested for adaptive suggestions based on mood trends.

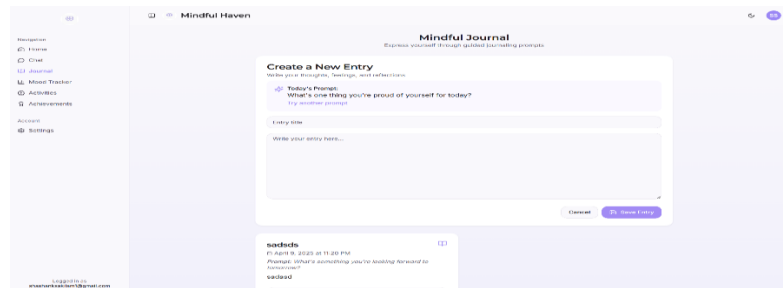


Figure 3: shows the place where user can write down his thoughts.

4.4 Mood Tracking:

Displays the user's emotional history with mood trends and journaling logs. Tested for accurate mood visualization and personalized response generation.

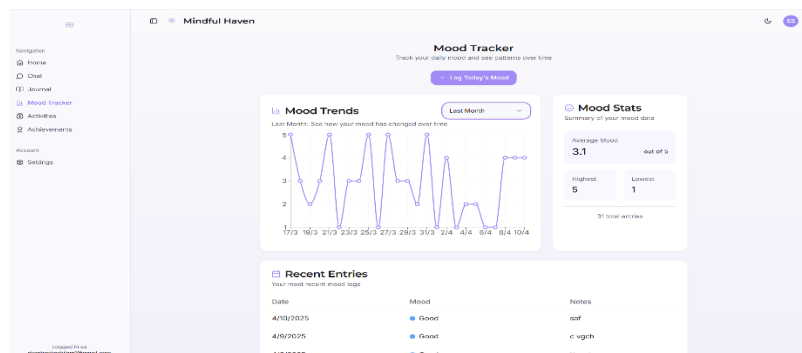


Figure 4: visualizes the User's mood in the previous month.

4.5 Emergency Contact:

Prompts users to add an emergency contact during initial login. Ensures safety measures and allows quick action during crisis detection events.

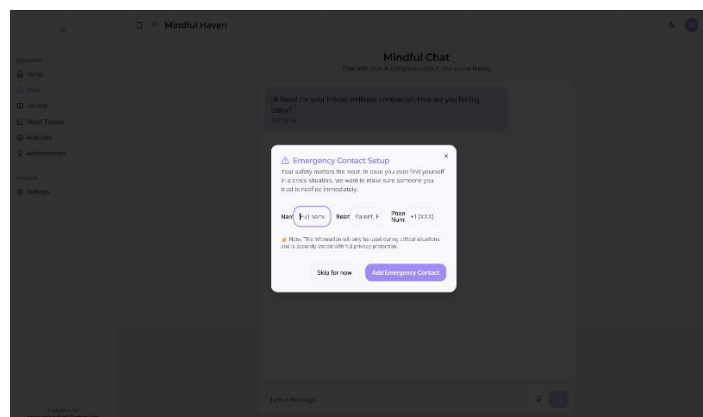


Figure 5: shows a pop-up seeking emergency contact details.

V. CONCLUSION AND FUTURE WORK

The Mindful Digital Haven platform successfully showcases how AI-powered technologies can revolutionize mental health support by providing real-time, personalized care in a private, accessible setting. Through features like emotion-aware response generation, mood tracking, guided journaling, and crisis alert integration, the system creates a safe space for users to reflect and receive timely support. Built using React for a responsive frontend, Firebase for authentication and data handling, and integrated with Gemini and AssemblyAI APIs, the platform ensures a secure, seamless, and scalable experience. It effectively addresses barriers such as stigma and limited access by delivering digital support tailored for emotional well-being.

Future advancements for Mindful Digital Haven may include integration with multilingual support to enhance inclusivity for diverse users. Expanding the voice conversation capability with natural spoken interactions will improve usability, especially for those with literacy challenges. Implementing machine learning for emotion trend forecasting and mood pattern analysis can enhance personalization and early intervention. Additional improvements like therapist-assisted chat options, a broader global crisis support directory, and stronger encryption for user data can further increase trust and adoption. These enhancements aim to evolve Mindful Digital Haven into a holistic and intelligent mental wellness ecosystem.

REFERENCES

- [1] Fitzpatrick, K. K., Darcy, A., & Vierhile, M. (2017). Delivering Cognitive Behavior Therapy to Young Adults With Symptoms of Depression and Anxiety Using a Fully Automated Conversational Agent (Woebot): A Randomized Controlled Trial. *JMIR Mental Health*, 4(2), e19. DOI: [10.2196/mental.7785](https://doi.org/10.2196/mental.7785)
- [2] Ghandeharioun, A., McDuff, D., Czerwinski, M., & Rowan, K. (2018). EMMA: An Emotion-Aware Wellbeing Chatbot. *arXiv preprint arXiv:1812.11423*. DOI: [10.48550/arXiv.1812.11423](https://doi.org/10.48550/arXiv.1812.11423)
- [3] Vivek More, Viren Koli, Vignesh Vijaykumar, and Vimla Jethani, "Chatbot for Mental Well-being," *ITM Web of Conferences*, Volume 40, 2021, pp. 03019. DOI: [10.1051/itmconf/20214003019](https://doi.org/10.1051/itmconf/20214003019)
- [4] Inhwa Song, Sachin R. Pendse, Neha Kumar, and Munmun De Choudhury, "The Typing Cure: Experiences with Large Language Model Chatbots for Mental Health Support," *arXiv preprint*, 2024. DOI: [10.48550/arXiv.2401.14362](https://doi.org/10.48550/arXiv.2401.14362)
- [5] Rawan AlMakinah, Andrea Norcini-Pala, Lindsey Disney, and M. Abdullah Canbaz, "Enhancing Mental Health Support through Human-AI Collaboration: Toward Secure and Empathetic AI-enabled Chatbots," *arXiv preprint*, 2024. DOI: [10.48550/arXiv.2410.02783](https://doi.org/10.48550/arXiv.2410.02783)
- [6] Batyrkhan Omarov, Sergazi Narynov, and Zhandos Zhumanov, "Artificial IntelligenceEnabled Chatbots in Mental Health: A Systematic Review," *Computers, Materials & Continua*, Volume 74, Issue 3, 2023, pp. 3195–3213. DOI: [10.32604/cmc.2023.034655](https://doi.org/10.32604/cmc.2023.034655)
- [7] Ahmad Ishqi Jabir, Laura Martinengo, Xiaowen Lin, John Torous, Mythily Subramaniam, and Lorainne Tudor Car, "AI Chatbots for Mental Health: A Scoping Review of Effectiveness, Feasibility, and Applications," *Journal of Medical Internet Research*, Volume 25, 2023, e44548. DOI: [10.2196/44548JMIR](https://doi.org/10.2196/44548JMIR)
- [8] Eckhard F. Kleinau, Tilinao Lamba, Wanda Jaskiewicz, Katy Gorentz, Ines Hungerbuehler, Donya Rahimi, Demoubly Kokota, Limbika Maliwichi, Edister S. Jamu, Alex Zumazuma, Mariana Negrão, Raphael Mota, Yasmine Khouri, and Michael Kapps, "Effectiveness of a Chatbot in Improving the Mental Wellbeing of Health Workers in Malawi During the COVID-19 Pandemic: A Randomized Controlled Trial," *medRxiv*, 2023. DOI: [10.1101/2023.01.24.23284959](https://doi.org/10.1101/2023.01.24.23284959)
- [9] Laberiano Andrade Arenas and Cesar Yactayo-Arias, "Chatbot with ChatGPT Technology for Mental Wellbeing and Emotional Management," *IAES International Journal of Artificial Intelligence (IJ-AI)*, Volume 13, Issue 3, 2024, pp. 2635–2644. DOI: [10.11591/ijai.v13.i3.pp2635-2644](https://doi.org/10.11591/ijai.v13.i3.pp2635-2644)
- [10] Sabour, S., Zhang, W., Xiao, X., Zhang, Y., Zheng, Y., Wen, J., Zhao, J., & Huang, M. (2022). Chatbots for Mental Health Support: Exploring the Impact of Emohaa on Reducing Mental Distress in China. *arXiv preprint arXiv:2209.10183*. DOI: [10.48550/arXiv.2209.10183](https://doi.org/10.48550/arXiv.2209.10183)
- [11] Yifan Hu, Lin Yang, and Tingting Tao, "Mental Health Chatbot for Young Adults With Depressive Symptoms During the COVID-19 Pandemic: Single-Blind, Three-Arm Randomized Controlled Trial," *Journal of Medical Internet Research*, vol. 24, no. 11, 2022. DOI: [10.2196/40719](https://doi.org/10.2196/40719)
- [12] Rayan Taher, Daniel Stahl, and Sukhi Shergill, "The Safety of Digital Mental Health Interventions: Systematic Review and Recommendations," *JMIR Mental Health*, 2023. DOI: [10.2196/47433](https://doi.org/10.2196/47433)

- [13] Jean Pierre Nayinzira and Mehdi Adda, "SentimentCareBot: Retrieval-Augmented Generation Chatbot for Mental Health Support with Sentiment Analysis," *Procedia Computer Science*, vol. 218, 2024, pp. 1234–1242. DOI: [10.1016/j.procs.2024.01.139](https://doi.org/10.1016/j.procs.2024.01.139)
- [14] Sunita Patil and Swetta Kukreja, "Early Detection of Cognitive Skill Impairments Using Machine Learning," *MethodsX*, vol. 14, 2025, Art. no. 103277. DOI: [10.1016/j.mex.2025.103277](https://doi.org/10.1016/j.mex.2025.103277)
- [15] Gargi Porwal and Jitendra Jeenger, "Evaluating the Quality of Mental Health Information Generated by Large Language Model Chatbots," *medRxiv*, 2024. DOI: [10.1101/2024.12.20.24319373](https://doi.org/10.1101/2024.12.20.24319373)



INTERNATIONAL
STANDARD
SERIAL
NUMBER
INDIA



INTERNATIONAL JOURNAL OF INNOVATIVE RESEARCH

IN SCIENCE | ENGINEERING | TECHNOLOGY

 9940 572 462  6381 907 438  ijirset@gmail.com



www.ijirset.com

Scan to save the contact details