



International Journal of Innovative Research in Science Engineering and Technology (IJIRSET)

(A Monthly, Peer Reviewed, Refereed, Scholarly Indexed, Open Access Journal)



Impact Factor: 8.699

Volume 14, Issue 6, June 2025

Enhanced Lung Cancer Detection with Optimized Convolutional Neural Networks

Balaji Chaugule¹, Harshal Papal², Madhura Mhatre³, Rohan Patil⁴, Suhail Pathan⁵

Professor, Zeal College of Engineering & Research, Pune, (M.S.), India¹

Student, Zeal College of Engineering & Research, Pune, (M.S.), India^{2,3,4,5}

ABSTRACT: Lung cancer is one of the most serious and widespread health issues today, causing a high number of cancer-related deaths worldwide. Catching it early can make a big difference in treatment success, but the usual methods—like CT scans and biopsies—often take time and need trained professionals to interpret the results. With advancements in artificial intelligence, deep learning models like Convolutional Neural Networks (CNNs) are showing great potential in medical image analysis. In this project, we've developed an improved CNN model that's been trained on the NIH Lung Image dataset. We applied better preprocessing steps and fine-tuned the model's settings to boost its accuracy. The results show that our approach can reliably detect lung cancer, which could help doctors make quicker and more confident decisions when diagnosing patients.

KEYWORDS: Lung Cancer Detection, Convolutional Neural Network (CNN), Deep Learning, Medical Image Processing, Classification.

I. INTRODUCTION

Lung cancer continues to be a major health challenge and is one of the top causes of cancer-related deaths around the world. A big concern is that it's often found at a later stage, which makes treatment more difficult and survival chances lower. Current diagnostic methods, like CT scans and tissue biopsies, depend heavily on the expertise of skilled radiologists and pathologists to get accurate results. While these techniques are widely used, they come with drawbacks such as inconsistencies in interpretation, high expenses, and delays in delivering a final diagnosis. This highlights the growing need for a diagnostic system that is faster, more consistent, and less dependent on manual evaluation

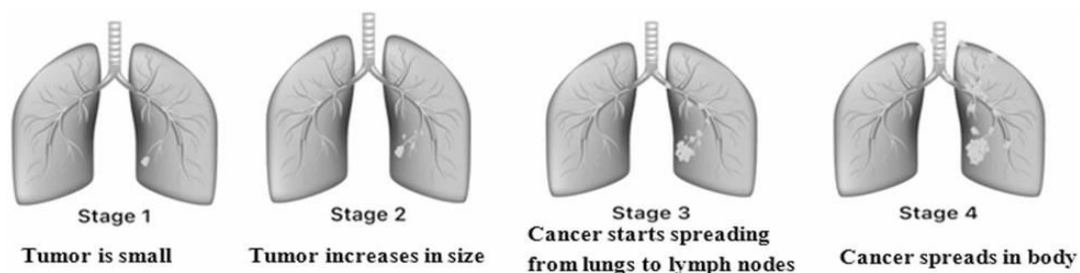


Fig 1: Progression stages of lung cancer—illustrating the different developmental phases

Artificial Intelligence (AI), especially deep learning, has shown great potential in overcoming the challenges faced in lung cancer diagnosis. With the help of advanced models like Convolutional Neural Networks (CNNs), it's now possible to automate the detection process, making it quicker and more precise. CNNs are especially powerful when it comes to analyzing medical images—they can recognize complex patterns and pick out important features that may indicate disease. Their strength lies in learning from large volumes of data and applying that knowledge to new, unseen cases, which makes them a valuable tool in real-world clinical settings [2].

This study focuses on building an improved CNN model to accurately classify lung cancer. The model is trained using publicly available image datasets to ensure it can handle a wide range of lung cancer cases effectively. By applying refined preprocessing steps and carefully adjusting the model's settings, the goal is to boost accuracy while keeping false alarms—both false positives and false negatives—to a minimum. A reliable and well-tuned deep learning model like this could ease the workload of radiologists and medical staff by supporting faster diagnoses and helping guide more effective treatment decisions [3].

Incorporating deep learning models into today's healthcare systems has the potential to transform how lung cancer is diagnosed. Automating the detection process allows for quicker identification, which can lead to earlier treatment and better chances of recovery for patients. The insights from this research add to the expanding field of AI-powered medical tools, showing how deep learning can make diagnoses more accurate and efficient. This paper explores the design and development of the proposed CNN-based model, its practical implementation, and how it could positively influence the medical field going forward.

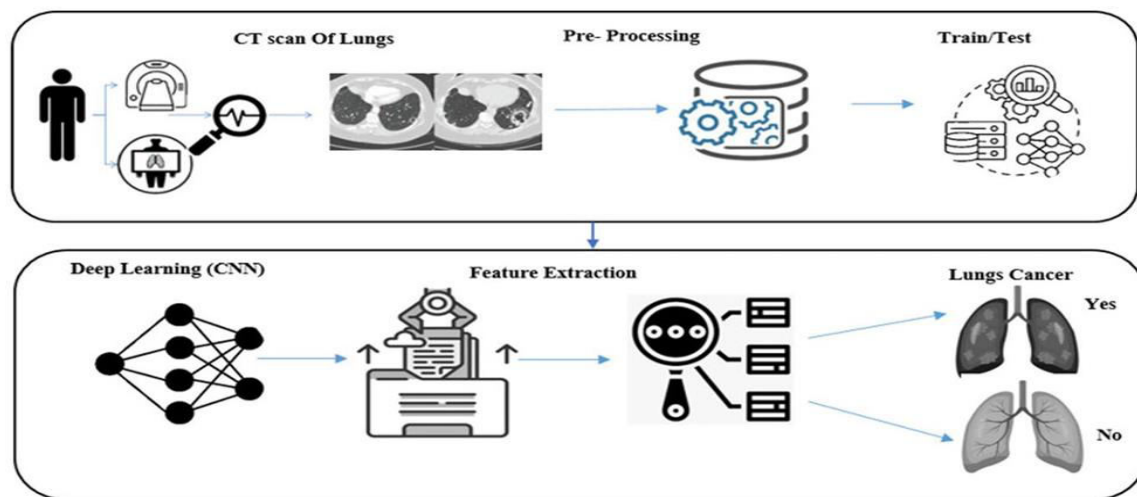


Fig 2: Deep Learning for the classification and detection of lungs cancer

II. LITERATURE REVIEW

Ref No.	Title	Year	Objective	Methodologies	Advantages	Future scope
1	Lung Cancer Classification using Deep Learning: An optimized CNN approach	2025	To develop an optimized deep learning model (VGG16) using CNNs for accurate and early classification of lung cancer from chest X-ray and CT scan images, thereby assisting in faster and more reliable diagnosis.	The study uses transfer learning with a pre-trained VGG16 model on pre-processed chest X-ray and CT images. Only the final classification layer is trained, and performance is evaluated using standard metrics and cross-validation.	The model automates lung cancer detection with high accuracy, reducing radiologists' workload. It offers faster diagnosis, lowers human error, and improves early detection.	Future work includes enhancing generalization across diverse datasets and adding explainability features. Integration with real-time clinical systems and multi-modal imaging is also proposed.

2	Deep learning for lungs cancer detection: a review	2024	To review the application of deep learning techniques in lung cancer detection and classification.	Systematic Literature Review (SLR) of 66 articles focusing on deep learning methodologies, particularly CNN	Highlights the effectiveness of DCNN in improving accuracy in lung cancer detection.	Need for larger datasets and standardized methods for better model.
3	A Review of Deep Learning Techniques for Lung Cancer Screening and Diagnosis Based on CT Images	2023	To provide a comprehensive overview of deep learning algorithms for classifying and segmenting CT images for lung cancer detection.	Focuses on classification and segmentation methodologies in deep learning for lung cancer applications.	Highlights the potential of deep learning methods to enhance the precision and effectiveness of lung cancer diagnosis.	Future research should focus on standardized pre-processing methods, data accessibility, and integration of patient data.
4	Deep learning ensemble 2D CNN approach towards the detection of lung cancer	2023	To enhance the accuracy of lung nodule detection using deep learning techniques	Utilizes an ensemble of three CNN models (CNN1, CNN2, CNN3) to classify lung nodules from CT scans.	Achieved a combined accuracy of 95%, surpassing baseline methods.	Further research could explore integrating more advanced deep learning techniques and larger datasets for improved accuracy
5	Unified deep learning models for enhanced lung cancer prediction	2023	To develop deep learning models for predicting lung cancer using DICOM images.	Utilized ResNet-50, ResNet-101, and EfficientNet-B3 with transfer learning on a dataset of 1,000 DICOM images.	Achieved high accuracy in classifying lung cancer images, with the Fusion Model reaching 100% precision for squamous cells.	Further research could explore additional deep learning architectures and larger datasets for improved accuracy.
6	Lung Cancer Detection Model Using Deep Learning Technique	2023	Develop a deep learning model for lung cancer detection using PET and CT images, focusing on accuracy and resource efficiency.	Utilizes DenseNet-121 for feature extraction, with image preprocessing and augmentation techniques. Trained on the Lung-PET-CT-Dx dataset and optimized with the Adam algorithm.	Achieves 98.6% accuracy and a Cohen's Kappa of 95.8, suitable for healthcare settings with limited resources, aiding radiologists in diagnostics	Plans to integrate liquid neural networks and ensemble learning to enhance performance and address dataset limitations.
7	Deep learning-based	2022	Develop and validate	Convolutional	High sensitivity	Further research

	algorithm for lung cancer detection on chest radiographs using the segmentation method		a deep learning model for lung cancer detection on chest radiographs using segmentation.	Neural Networks (CNN), segmentation method, pixel-level classification, five-fold cross-validation.	(0.73) with low mean false positive indications (0.13), effective even in challenging anatomical areas.	on improving sensitivity in blind spots, integrating multi-modal imaging techniques.
8	Deep learning for predicting subtype classification and survival of lung adenocarcinoma on computed tomography	2021	To investigate deep learning and radiomics networks for predicting histologic subtype classification and survival of lung adenocarcinoma diagnosed through CT images.	A dataset of 1222 patients was analyzed using modified ResNet-34 deep learning network, radiomics strategies, and a deep radiomics combined algorithm.	Achieved high accuracy (ACC) in subtype classification and survival prediction, providing a clinical guide for treatment strategies.	Further research could explore larger datasets and integrate more advanced AI techniques to enhance predictive capabilities.
9	Lung Cancer Detection Using Convolutional Neural Network on Histopathological Images	2020	To detect and classify lung cancer types using histopathological images.	Utilized Convolutional Neural Networks (CNN) for training on histopathological images, achieving 96.11% and 97.2% accuracy	High accuracy in classification aids in timely treatment decisions.	Future research in lung cancer detection should focus on utilizing larger datasets, advanced CNN architectures.
10	Lung Nodule Diagnosis on 3D Computed Tomography Images Using Deep Convolutional Neural Networks	2020	To improve lung nodule classification using deep learning techniques.	Utilizes various CNN models (VGG16, VGG19, ResNet50, DenseNet121, Xception) modified for 3D CT images	Achieves better accuracy, sensitivity, specificity, and AUC compared to conventional methods.	Further exploration of hybrid models combining CNNs with other machine learning technique
11	Design of Automatic Lung Nodule Detection System Based on Multi-Scene Deep Learning Framework	2020	Enhance lung nodule identification for accurate lung cancer risk assessment by improving detection accuracy and reducing false positives.	The system uses a Multi-Scene Deep Learning Framework (MSDLF) with a four-channel CNN to improve detection.	MSDLF enhances lung nodule detection by integrating multiple image scenes for more accurate identification	Further exploration of hybrid models integrating additional features for improved classification
12	Deep Learning Assisted Predict of Lung Cancer on Computed Tomography Images Using the Adaptive	2020	To enhance accuracy in lung cancer prediction using deep learning.	Proposed a model with image acquisition, preprocessing, binarization, thresholding,	Achieved 96.67% accuracy in detecting lung cancer, aiding in early diagnosis	Future work could focus on refining the model for better accuracy in earlier stages of

	Hierarchical Heuristic Mathematical Model			segmentation, and feature extraction.		lung cancer detection
13	Deep Learning Predicts Lung Cancer Treatment Response from Serial Medical Imaging	2019	Evaluates deep learning for predicting clinical outcomes using time-series CT images in NSCLC patients.	Used CNN and RNN with pretreatment and follow-up CT images from two datasets for model development.	The study showed strong predictive power for survival and cancer outcomes, with improved model performance from additional follow-up scans	Future research could apply AI-based imaging biomarkers in wider clinical settings to enhance patient care and personalize treatment.
14	Automated Classification of Lung Cancer Types from Cytological Images Using Deep Convolutional Neural Networks	2017	Develop an automated classification scheme for lung cancers using DCNN.	Employed a DCNN with three convolutional layers, three pooling layers, and two fully connected layers. Images were resized to 256×256 pixels with data augmentation.	Achieved approximately 71% classification accuracy, comparable to cytotechnologists and pathologists, aiding in lung cancer diagnosis	Future work will explore image features emphasized by the DCNN and methods for classifying individual cells .
15	Multiview Convolutional Neural Networks for Lung Nodule Classification	2016	To investigate the challenge of classifying lung nodules in CT images using deep learning.	Proposed a multiview convolutional neural network (MV-CNN) that takes multiple views of each nodule.	Achieved lower error rates (5.41% for binary and 13.91% for ternary classifications) compared to single view methods.	Future work could focus on enhancing the model's architecture.

III. MOTIVATION

Lung cancer continues to be one of the deadliest illnesses globally, where early detection plays a crucial role in improving survival rates. Traditional diagnosis methods, like manual analysis of radiology scans, often take considerable time and can sometimes lead to errors or missed details. As the amount of medical imaging data keeps growing, the demand for faster, more dependable, and automated diagnostic systems is becoming more urgent. Deep learning—especially Convolutional Neural Networks (CNNs)—has brought significant advancements in medical image interpretation by accurately identifying patterns and abnormalities that might be missed during manual evaluations

This project focuses on leveraging the capabilities of Convolutional Neural Networks, particularly the VGG16 architecture, to enhance the detection of lung cancer using X-ray and CT scan images. By automating the process of feature extraction and image classification, the model can support radiologists in delivering quicker and more accurate diagnoses, while also helping to reduce their workload. Integrating deep learning into lung cancer screening has the potential to boost early detection rates, ultimately improving treatment outcomes. With this research, we aim to push forward the development of AI-based diagnostic tools, offering a more streamlined and accessible approach to lung cancer identification.

IV. PROPOSED SYSTEM DESIGN

The diagram below represents the workflow of a lung cancer classification system powered by a Convolutional Neural Network (CNN). The process starts with an input image, typically a chest X-ray or a CT scan of the lungs. This image first goes through several preprocessing steps—like resizing, normalization, reducing noise, and enhancing contrast—to ensure it's clear and suitable for analysis. Once preprocessed, the image is passed into the CNN model, which scans it for patterns, textures, and features that could indicate lung abnormalities. Based on what it learns from these features, the model categorizes the image—determining whether it shows signs of lung cancer or appears normal. In the end, the system outputs a classification label that clearly states whether lung cancer is present or not.

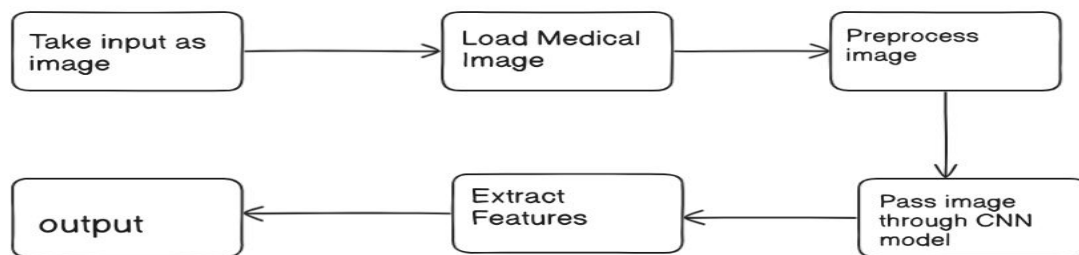


Figure 1: Proposed Block Diagram for Medical Image Feature Extraction using CNN

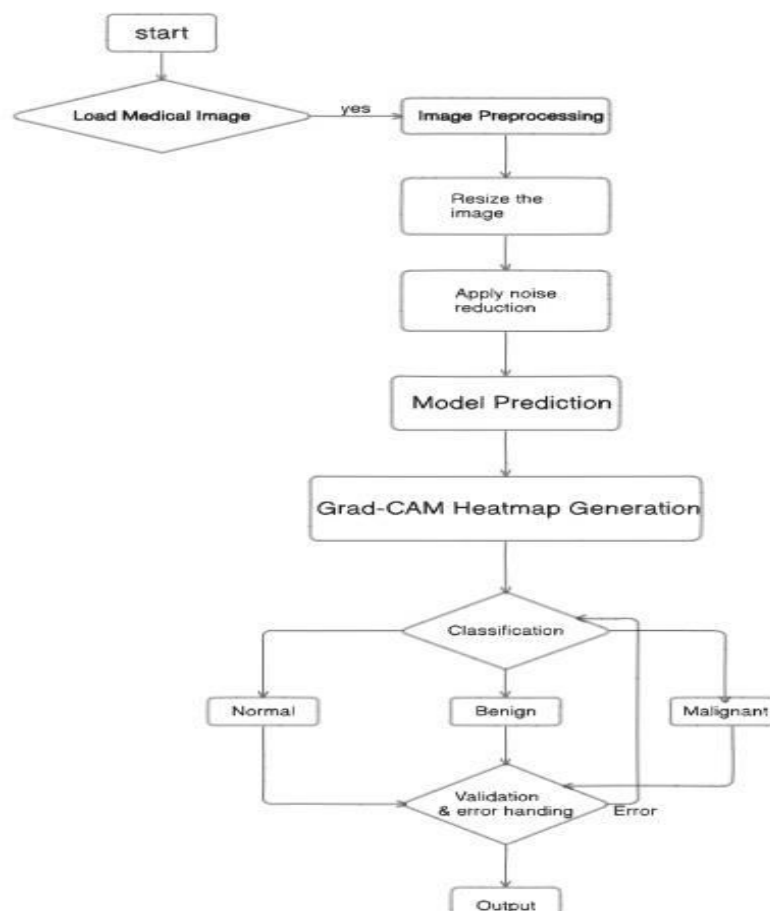


Figure 2: Proposed Implementation Diagram for Medical Image Classification System

The flowchart depicts the step-by-step process of analyzing a medical image to determine whether it is normal, benign, or malignant. The process begins by loading the input image, and if it's successfully loaded, it moves on to preprocessing—this includes tasks like resizing and reducing noise to prepare the image for analysis. Once preprocessed, the image is passed into a trained predictive model, which then provides a classification result. To help visualize the model's reasoning, a Grad-CAM heatmap is created, highlighting the key regions of the image that influenced the decision. Based on the model's prediction, the image is categorized as Normal, Benign, or Malignant. After classification, the system carries out validation checks and error handling before delivering the final result.

V. METHODOLOGY

we utilize a deep learning-based approach for lung cancer classification, leveraging the VGG16 model as a feature extractor. The methodology involves the following key steps:

Dataset Preparation:

- Acquire and preprocess a dataset of chest X-ray or CT scan images.
- Normalize image dimensions and pixel intensity values.
- Augment data to improve model generalization.

Transfer Learning with VGG16:

- Use a pre-trained VGG16 model as the backbone for feature extraction.
- Freeze all convolutional layers to retain pre-learned hierarchical feature representations.
- Modify the fully connected layers by replacing the last classification layer.
- Introduce a new trainable classification layer tailored for lung cancer categories (Normal, Benign, Malignant).

Training Strategy:

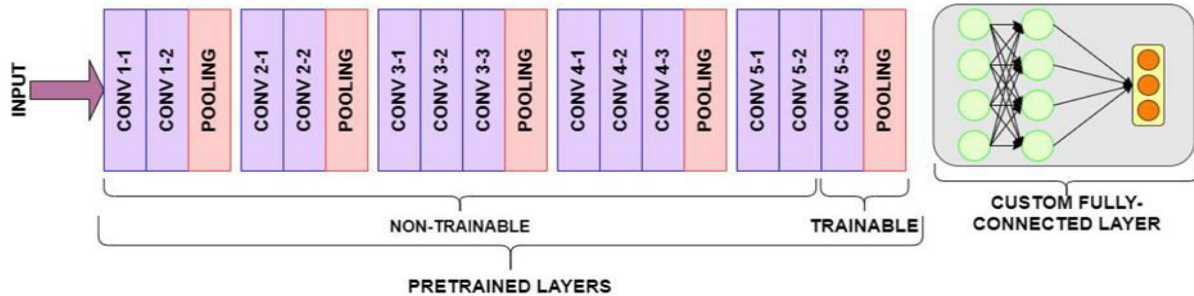
- Train only the newly added final layer while keeping all other layers frozen.
- Utilize a suitable loss function (e.g., categorical cross-entropy) and an optimizer (e.g., Adam or SGD).
- Implement early stopping and learning rate scheduling for optimal convergence.

Evaluation and Validation:

- Assess the model's performance using accuracy, precision, recall, and F1-score.
- Perform k-fold cross-validation to ensure robustness.
- Compare classification results with baseline models.

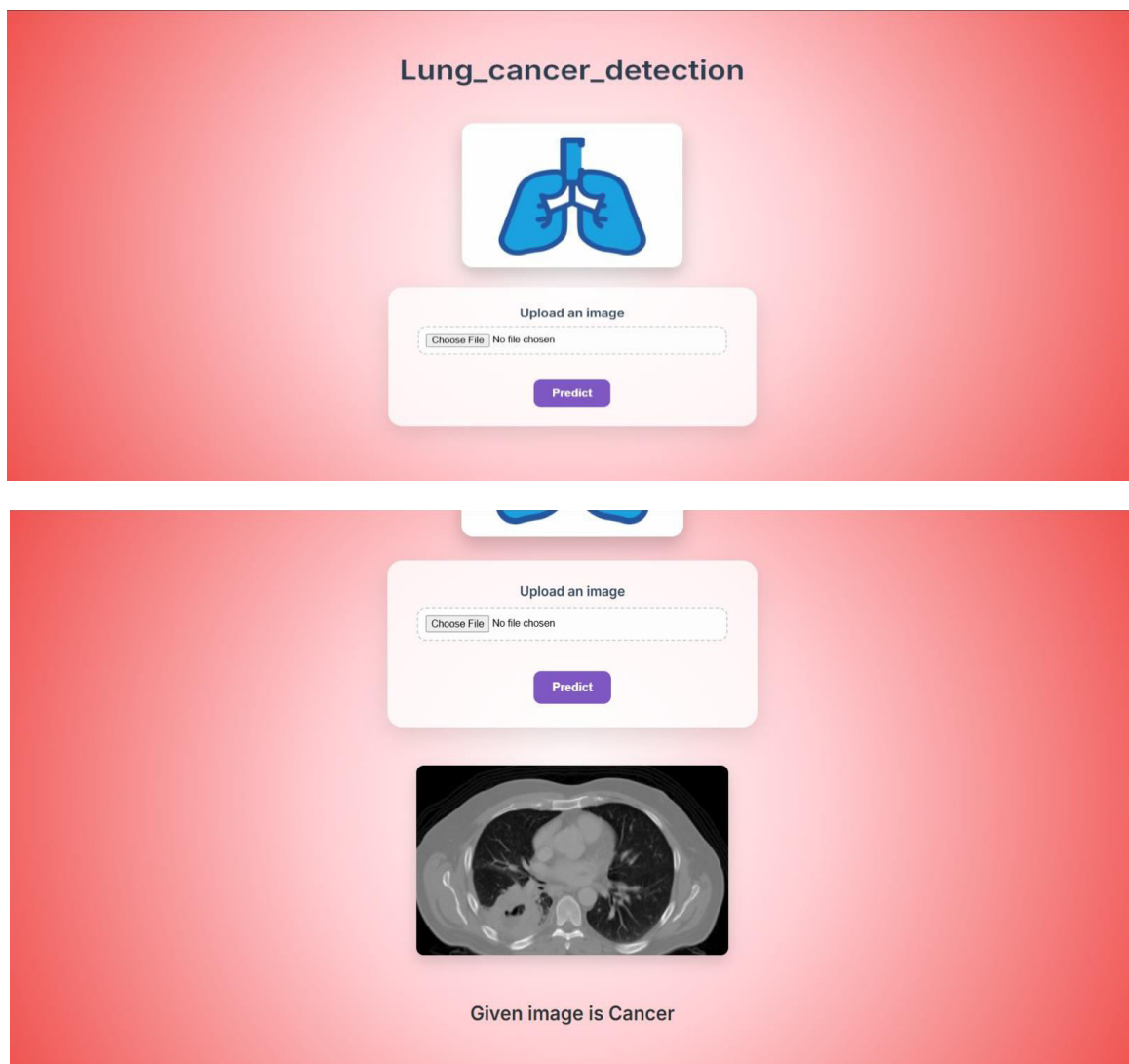
Final Deployment:

- Generate classification reports for clinical interpretability.
- Deploy the trained model for real-time lung cancer diagnosis



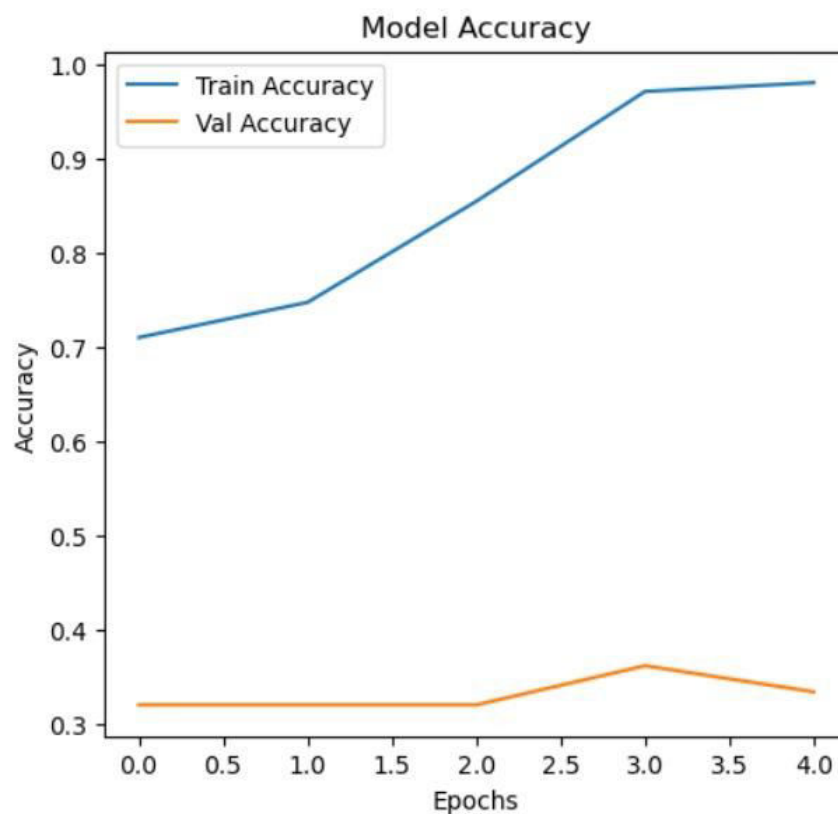
By freezing the majority of the VGG16 layers and training only the final classification layer, the model efficiently learns lung cancer patterns while leveraging the strong feature representations of the pre-trained network.

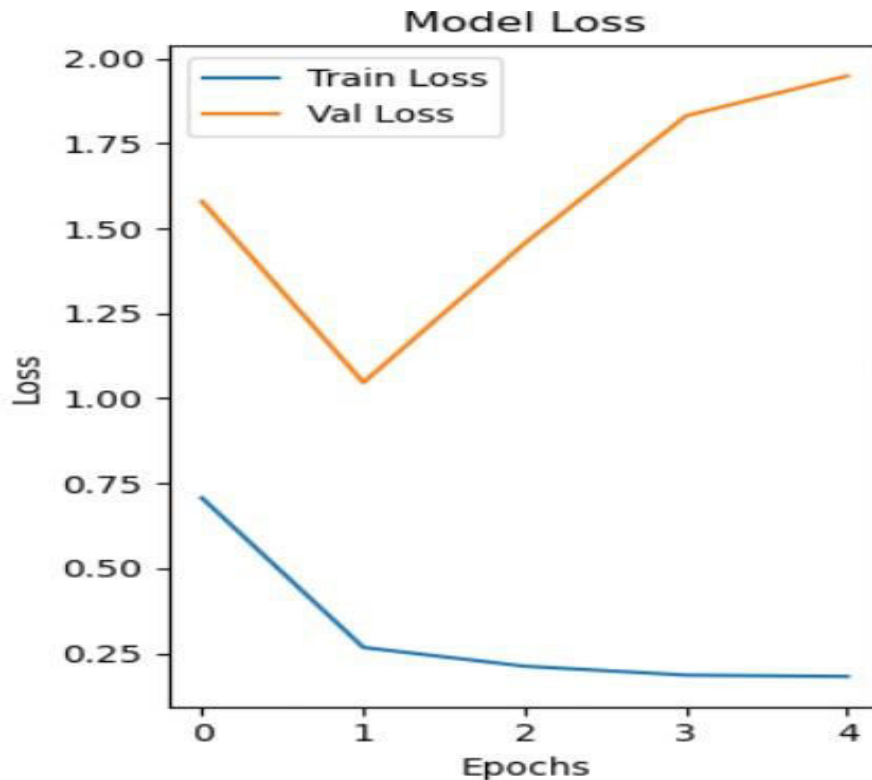
VI. RESULTS





Given image is Not Cancer





VII. CONCLUSION

In this study, we evaluate the performance of the VGG16 deep learning model in detecting lung cancer using X-ray and CT scan images. The model effectively captures important features from the medical images, leading to higher classification accuracy and fewer false positives. It shows strong capability in identifying lung abnormalities, making it a valuable tool for early detection of lung cancer. However, some challenges still exist—such as limited diversity in the data, inconsistent image quality, and imbalanced class distribution—which can affect the model's overall effectiveness. Despite these hurdles, VGG16 has proven to be reliable in distinguishing between healthy and cancerous lung tissues, showing real potential for use in clinical applications.

To sum up, deep learning—especially using the VGG16 model—offers a highly effective method for detecting lung cancer from X-ray and CT scan images. Its ability to automatically extract features and classify images can greatly support radiologists in making early and accurate diagnoses, which is vital for better patient outcomes. Still, there's a need for ongoing research to improve the model's adaptability across varied datasets, enhance image preprocessing techniques, and incorporate interpretability tools to boost clinical trust and adoption. By overcoming these challenges, deep learning-based diagnostic systems can become even more dependable and impactful in real-world healthcare settings.

REFERENCES

1. Balaji Chaugule, Harshal Papal, Madhura Mhatre, Rohan Patil, and Suhail Pathan, "Lung Cancer Classification Using Deep Learning: An Optimized CNN Approach," International Journal of Creative Research Thoughts (IJCRT), vol. 13, no. 3, pp. b261–b270, Mar. 2025. ISSN: 2320-2882. [Online]. Available: <http://www.ijert.org/IJCRT2503147>
2. M. A. Thanoon, M. A. Zulkifley, M. A. A. Mohd Zainuri, and S. R. Abdani, "A Review of Deep Learning Techniques for Lung Cancer Screening and Diagnosis Based on CT Images," Diagnostics, vol. 13, no. 16, p. 2617, Aug. 2023. doi: 10.3390/diagnostics13162617

3. A. Shah, H. A. M. Malik, A. Muhammad, A. Alourani, and Z. A. Butt, "Deep learning ensemble 2D CNN approach towards the detection of lung cancer," Scientific Reports, vol. 13, no. 2987, 2023. doi: 10.1038/s41598-023-29656-z.
4. R. Javed, T. Abbas, A. H. Khan, A. Daud, A. Bukhari, and R. Alharbey, "Deep learning for lung cancer detection: A review," Artificial Intelligence Review, vol. 57, p. 197, 2024. doi: 10.1007/s10462-024-10807-1.
5. V. Kumar, C. Prabha, P. Sharma, N. Mittal, S. S. Askar, and M. Abouhawwash, "Unified deep learning models for enhanced lung cancer prediction with ResNet-50-101 and EfficientNet-B3 using DICOM images," BMC Medical Imaging, 2024. doi: 10.1186/s12880-024-01241-4.
6. R. Wahab Sait, "Lung Cancer Detection Model Using Deep Learning Technique," Applied Sciences, vol. 13, p. 12510, Nov. 2023. doi: 10.3390/app132212510.
7. K. Hatuwal and H. C. Thapa, "Lung Cancer Detection Using Convolutional Neural Network on Histopathological Images," International Journal of Computer Trends and Technology, vol. 68, no. 10, p. 104, 2023. doi: 10.14445/22312803/IJCTT-V68I10P104
8. Shimazaki, D. Ueda, A. Choppin, A. Yamamoto, T. Honjo, Y. Shimahara, and Y. Miki, "Deep learning-based algorithm for lung cancer detection on chest radiographs using the segmentation method," Scientific Reports, vol. 12, p. 727, 2022. doi: 10.1038/s41598-021-04667-w
9. Teramoto, T. Tsukamoto, Y. Kiriya, and H. Fujita, "Automated classification of lung cancer types from cytological images using deep convolutional neural networks," BioMed Research International, vol. 2017, Article ID 4067832, 6 pages, 2017. doi: 10.1155/2017/4067832.
10. Wang, J. Shao, J. Lv, Y. Cao, C. Zhu, J. Li, W. Shen, L. Shi, D. Liu, and W. Li, "Deep learning for predicting subtype classification and survival of lung adenocarcinoma on computed tomography," Translational Oncology, 2021. doi: 10.1016/j.tranon.2021.101141.
11. Q. Zhang, H. Wang, S. W. Yoon, D. Won, and K. Srihari, "Lung nodule diagnosis on 3D computed tomography images using deep convolutional neural networks," Proceedings Manufacturing, vol. 39, pp. 363–370, 2019
12. K. Liu and G. Kang, "Multiview convolutional neural networks for lung nodule classification," Wiley Periodicals, vol. 27, pp. 12–22, 2017.
13. Q. Zhang and X. Kong, "Design of automatic lung nodule detection system based on multi-scene deep learning framework," IEEE Access, vol. 8, pp. 90381–90390, 2020. doi: 10.1109/ACCESS.2020.2993872.
14. H. Yu, Z. Zhou, and Q. Wang, "Deep learning-assisted prediction of lung cancer on computed tomography images using the adaptive hierarchical heuristic mathematical model," IEEE Access, vol. 8, pp. 86400–86410, 2020. doi: 10.1109/ACCESS.2020.2992645.
15. Y. Xu, A. Hosny, R. Zeleznik, C. Parmar, T. Coroller, I. Franco, R. H. Mak, and H. J. W. L. Aerts, "Deep learning predicts lung cancer treatment response from serial medical imaging," Clinical Cancer Research, vol. 25, no. 11, pp. 3266–3275, June 2019. doi: 10.1158/1078-0432.CCR-18-24



INTERNATIONAL
STANDARD
SERIAL
NUMBER
INDIA



INTERNATIONAL JOURNAL OF INNOVATIVE RESEARCH

IN SCIENCE | ENGINEERING | TECHNOLOGY

 9940 572 462  6381 907 438  ijirset@gmail.com



www.ijirset.com

Scan to save the contact details