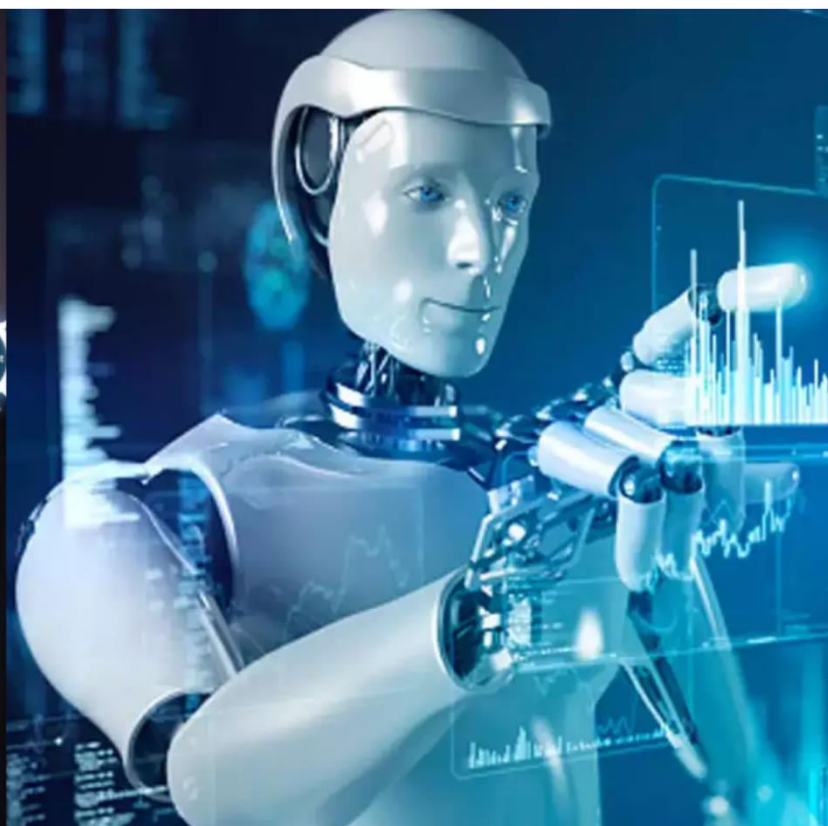




International Journal of Innovative Research in Science Engineering and Technology (IJIRSET)

(A Monthly, Peer Reviewed, Refereed, Scholarly Indexed, Open Access Journal)



Impact Factor: 8.699

Volume 14, Issue 3, March 2025

Impact of Global Warming on Animal Biodiversity

G Suresh Babu¹, K Samuel Babu^{2*}, M Bhaskara Sai Ram³

Assistant Professor, Department of Zoology, Sir C. R. Reddy Autonomous College, Eluru, Andhra Pradesh, India^{1,2}

Student, Department of Zoology, Sir C. R. Reddy Autonomous College, Eluru, Andhra Pradesh, India³

ABSTRACT: Global warming has significantly altered ecosystems worldwide, affecting animal populations and biodiversity. This paper explores the direct and indirect consequences of global warming on animals, including habitat loss, behavioural changes, and physiological adaptations. Rising temperatures, extreme weather events, and changing food availability disrupt natural ecosystems, causing shifts in species distributions, increased extinction risks, and altered predator-prey dynamics. This research highlights the necessity of global conservation strategies to mitigate these effects.

KEYWORDS: Global warming, climate change, biodiversity, habitat loss, species adaptation, extinction risk, conservation.

I. INTRODUCTION

Global warming is one of the most pressing environmental challenges of the 21st century, with profound and far-reaching consequences for ecosystems, biodiversity, and animal populations. As human activities continue to release greenhouse gases into the atmosphere, global temperatures are rising at an unprecedented rate, disrupting natural habitats and altering the delicate balance of life on Earth. The effects of climate change extend beyond simple temperature increases, influencing weather patterns, sea levels, and the availability of food and water resources. These environmental shifts place immense pressure on wildlife, forcing species to adapt, migrate, or face the risk of extinction.

One of the most significant impacts of global warming is habitat loss, as rising temperatures and extreme weather events degrade ecosystems essential for species survival. Melting ice caps, desertification, deforestation, and ocean acidification have already displaced countless species, pushing them into unfamiliar environments where survival is uncertain. In addition to habitat changes, many animals experience behavioral shifts as they attempt to cope with fluctuating conditions. Migration patterns are altered, breeding seasons shift, and feeding behaviors change as species struggle to adapt to their new realities.

Beyond behavioral changes, global warming also drives physiological adaptations in certain species. Some animals evolve to tolerate higher temperatures, while others experience shifts in body size, metabolic rates, or reproductive patterns in response to environmental stress. However, these adaptations may not be sufficient for long-term survival, particularly for species with slow evolutionary rates or highly specialized ecological niches. Furthermore, disrupted predator-prey relationships and shifting species distributions contribute to imbalances in ecosystems, potentially leading to cascading effects that threaten biodiversity at a global scale.

The challenges posed by climate change highlight the urgent need for conservation efforts to mitigate its impacts on wildlife. Protecting natural habitats, reducing carbon emissions, and implementing sustainable land and resource management practices are critical steps toward preserving biodiversity. This paper explores the direct and indirect effects of global warming on animals, examining the complex interactions between environmental changes and species survival. By understanding these challenges, we can develop effective strategies to protect vulnerable species and ensure the long-term stability of ecosystems worldwide.

II. PRELIMINARIES

This study examines the impact of global warming on animal species using ecological and climatological analyses. The primary factors include temperature rise, ocean acidification, and changing weather patterns, affecting species survival, reproduction, and migration.

- **Temperature Rise:** Increasing global temperatures impact ecosystems by shifting climatic zones, forcing many species to migrate to cooler areas or adapt to extreme conditions. This disrupts food chains, breeding cycles, and natural behaviors of both terrestrial and marine species.
- **Ocean Acidification:** The absorption of excess atmospheric carbon dioxide (CO₂) by oceans lowers pH levels, making waters more acidic. This directly affects marine life, including corals, shellfish, and fish, disrupting marine biodiversity and food sources.
- **Extreme Weather Events:** Global warming intensifies storms, droughts, wildfires, and floods. These events destroy habitats, force mass migrations, and cause significant population declines in vulnerable species.
- **Shifts in Ecosystems:** Many plant and animal species are experiencing habitat fragmentation due to climate-induced environmental changes. This leads to reduced genetic diversity, population decline, and increased vulnerability to disease and predators.
- **Changes in Food Availability:** Seasonal variations in temperature and precipitation affect the availability of food sources for various species. For instance, earlier springs and delayed winters can cause mismatches between animal reproduction cycles and their food supplies.

III. DEFINITIONS

Global Warming: The long-term heating of Earth's climate due to human activities, primarily fossil fuel combustion. It results in rising global temperatures, increased frequency of extreme weather events, and changes in precipitation patterns, all of which negatively affect ecosystems and animal populations.

Habitat Loss: The destruction or alteration of natural environments, making them unsuitable for species. This occurs due to deforestation, urban expansion, industrialization, and climate change-induced changes like desertification, rising sea levels, and glacial melting.

Biodiversity Decline: The reduction in species variety due to environmental changes. This includes the loss of genetic diversity, species extinction, and disruptions in ecological interactions. Biodiversity decline weakens ecosystem stability and resilience, making it harder for ecosystems to recover from climate-related disturbances.

Species Migration: The movement of species in response to climate changes. Animals migrate to cooler areas, higher altitudes, or deeper waters in search of suitable habitats. This shift often leads to increased competition for resources, changes in predator-prey dynamics, and in some cases, the failure of species to adapt, leading to population declines or extinctions.

IV. MAIN RESULTS

Impact of Climate Change on Wildlife and Ecosystems

1. **Rising Temperatures and Habitat Shifts:** One of the most significant effects of global warming is the rise in average temperatures across the planet. As temperatures increase, many species are forced to migrate to cooler regions in order to survive. This shift can be particularly challenging for species that have adapted to specific environmental conditions over thousands of years. For example, some mountain-dwelling species are moving to higher elevations, but as they reach the peaks, they have nowhere else to go, increasing their risk of extinction.

This migration does not happen in isolation; it affects entire ecosystems. Predator-prey relationships and food chains are disrupted when species move into new areas. For instance, if a primary prey species moves to a cooler region but its predator does not, the predator population may decline due to food shortages. Additionally, new interactions between species may occur, sometimes leading to increased competition for limited resources. Species that struggle to adapt to new habitats often face population declines, and in extreme cases, they may become extinct.

2. **Ocean Acidification:** Rising levels of carbon dioxide (CO₂) in the atmosphere do not just contribute to warming temperatures; they also have a direct impact on ocean chemistry. When CO₂ dissolves in seawater, it forms carbonic acid, which lowers the pH of the ocean. This process, known as ocean acidification, makes it harder for marine organisms such as coral reefs, shellfish, and plankton to build and maintain their calcium carbonate structures.

Coral reefs, in particular, are highly sensitive to changes in ocean acidity. When the water becomes too acidic, corals experience bleaching, a phenomenon where they expel the symbiotic algae that provide them with energy. Without these algae, corals become weak and may eventually die, leading to the loss of entire reef ecosystems. Since coral reefs serve as critical habitats for numerous marine species, their decline results in significant disruptions to fish populations and other marine life. Many fish species depend on coral reefs for shelter and food, and their populations decline as their habitats degrade.

3. **Phenological Changes:** Climate change also affects the timing of natural events in wildlife, a phenomenon known as phenological shifts. Many species rely on environmental cues such as temperature and daylight to determine when to breed, migrate, or hibernate. However, as temperatures rise, these events are occurring earlier than usual. For example, birds may migrate to breeding grounds sooner than they normally would, only to find that their primary food sources, such as insects, are not yet available.

These timing mismatches can have severe consequences. If a species hatches or gives birth when food is scarce, the survival rate of offspring decreases. This can weaken populations over time, reducing their ability to sustain themselves in changing environments. In some cases, species may attempt to adjust their life cycles, but rapid climate change makes adaptation difficult. Over time, disrupted phenology can contribute to population declines and loss of biodiversity.

4. **Extinction Risks:** Perhaps the most alarming impact of climate change on wildlife is the increased risk of extinction. Species that cannot adapt quickly enough to rising temperatures or habitat changes face significant survival challenges. The loss of habitat due to deforestation, desertification, and melting ice further exacerbates the problem. For instance, Arctic species such as polar bears rely on sea ice to hunt for food. As ice melts at an unprecedented rate, their hunting grounds disappear, leading to starvation and declining populations.

Additionally, climate change intensifies competition for resources. As some species migrate to new areas, they may compete with native species for food, water, and shelter. This can drive weaker species to extinction, particularly those that are already endangered. The extinction of one species can trigger a cascade effect, where dependent species also suffer, further destabilizing ecosystems.

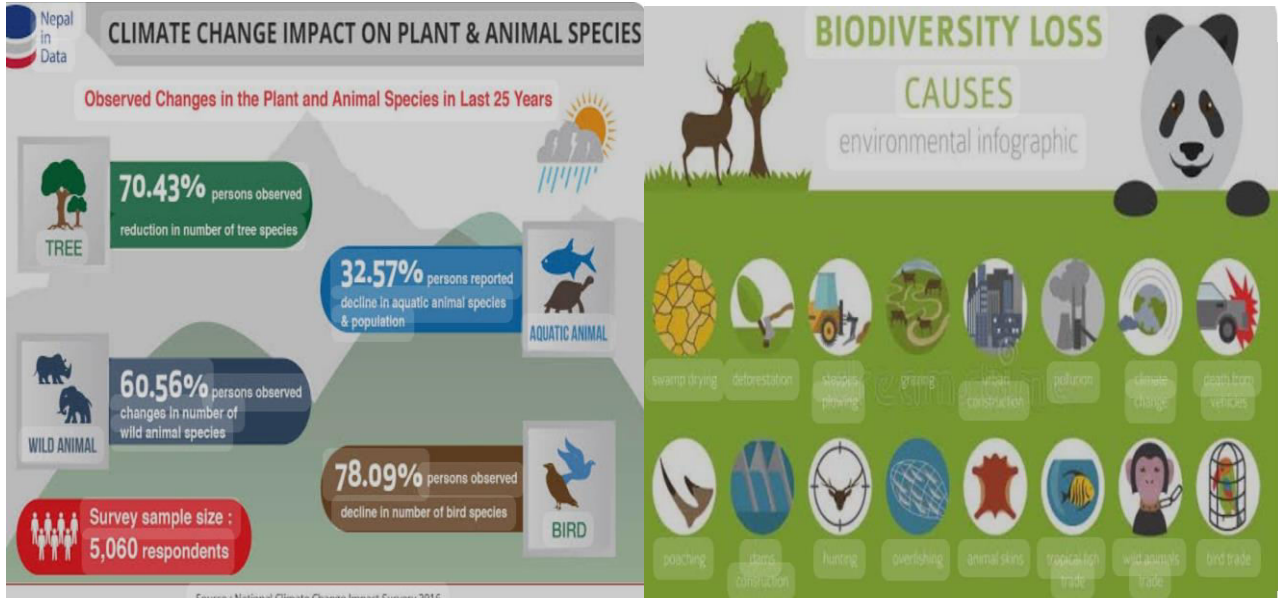
The Need for Urgent Conservation Efforts

Global warming poses a severe threat to animal species and biodiversity. Habitat destruction, migration shifts, and increased extinction risks necessitate urgent conservation efforts. As ecosystems face unprecedented changes, proactive measures must be taken to safeguard global wildlife.

International policies play a critical role in addressing these threats. Agreements such as the Paris Agreement aim to limit global temperature rise by reducing greenhouse gas emissions. Conservation strategies, including habitat protection, wildlife corridors, and breeding programs for endangered species, are essential to mitigating biodiversity loss.

Climate mitigation strategies, such as reducing carbon footprints, transitioning to renewable energy, and protecting forests, are crucial in slowing down climate change and preserving natural habitats. Governments, organizations, and individuals must work together to implement sustainable practices and policies that ensure the survival of species and ecosystems.

These findings highlight the urgent need for conservation strategies and climate mitigation efforts to protect global biodiversity.



V. EXAMPLES

1. Polar Bears:

- Polar bears rely on sea ice to hunt seals, their primary food source.
- Due to rising temperatures, Arctic ice is melting earlier in the season and forming later, reducing hunting time.
- Many polar bears face malnutrition and declining populations as they struggle to find food.

2. Coral Reefs:

- Corals have a symbiotic relationship with algae that provide them with nutrients.
- Increased ocean temperatures cause corals to expel algae, leading to coral bleaching.
- This disrupts marine ecosystems, affecting fish populations that depend on reefs for shelter and food.

3. Bird Migration:

- Many birds migrate seasonally to find food and nesting sites.
- Rising temperatures cause some birds to migrate earlier than usual.
- This can create mismatches in food availability, as insects and plants they rely on may not be in sync with their arrival.

Each of these examples illustrates how global warming directly affects different species and disrupts ecosystems, highlighting the need for urgent conservation efforts.



VI. APPLICATIONS

- **Conservation Efforts:** Establishing wildlife corridors and protected areas to provide safe migration routes and preserve habitats. This ensures species have access to necessary resources and can adapt to environmental changes more effectively.
- **Climate Mitigation:** Reducing greenhouse gas emissions by promoting renewable energy sources, reforestation, and sustainable land use practices. These efforts help slow temperature rise and stabilize ecosystems.
- **Wildlife Monitoring:** Implementing advanced tracking systems, such as satellite monitoring and AI-driven analytics, to study animal movements, detect population changes, and predict potential threats. This data is crucial for developing targeted conservation strategies and policies.
- **Ecosystem Restoration:** Reintroducing native plant species, restoring degraded habitats, and improving land management to counteract the adverse effects of climate change. Healthy ecosystems support biodiversity and increase species resilience.

- **Public Awareness and Policy Development:** Educating communities about climate change impacts and advocating for stronger environmental policies at national and international levels. Government regulations can play a vital role in reducing industrial pollution and protecting endangered species.

1	Species Affected by Global Warming and Their Response Strategies	Around one million animal and plant species are now threatened with extinction according to the Intergovernmental Science-Policy Platform on Biodiversity and Ecosystem Services (IPBES)	Corals. ... Chinook salmon. ... Green sea turtle. ... Polar bear. ... Adélie penguin. ... Bumblebee. ... Whales.
2	Conservation Strategies and Their Effectiveness	The conservation strategy is a series of conservation actions that collectively achieve the biological goals and objectives of the Habitat Plan. The conservation strategy provides mitigation for impacts on covered species on the basis of species and habitat needs.	biodiversity, wildlife, ecosystem, etc
3	Global Temperature Trends and Their Impact on Biodiversity	Rising global temperatures, driven by climate change, pose a significant threat to biodiversity, causing habitat loss, shifts in species distribution, and increased extinction risks, impacting ecosystems and the planet's natural balance.	Coral Reefs Rainforests Polar Regions Terrestrial Ecosystems

VII. REAL-LIFE PROBLEMS

Impact of Climate Change on Ecosystems, Human-Wildlife Interaction, and Economy

1. Food Chain Disruptions: As global temperatures rise, many species are forced to migrate toward cooler regions in search of suitable habitats. This shift disrupts established food chains and alters the delicate balance of ecosystems in several ways:

- Changes in Predator-Prey Dynamics:** When prey species move to new areas, their natural predators may struggle to find food. This can lead to population declines or even local extinctions of predator species. In some cases, predators may be forced to switch to alternative food sources, which can create additional ecological imbalances.
- Domino Effect on Ecosystems:** When a key species in an ecosystem experiences a shift or decline, other species that depend on it are also affected. For example, if a small fish species migrates to cooler waters, seabirds and larger fish that rely on them for food may experience starvation, leading to cascading effects throughout the ecosystem.
- Invasive Species Expansion:** As species move into new territories, they may outcompete native species, disrupting local ecosystems. This can lead to the loss of biodiversity and the decline of species that have adapted to specific environmental conditions over thousands of years.

2. Human-Wildlife Conflict: Climate change has intensified habitat destruction through processes such as deforestation, desertification, rising sea levels, and melting ice caps. As natural habitats shrink or become uninhabitable, many species are forced to seek new territories, often leading to increased interactions with humans.

- Encroachment into Human Settlements:** Animals searching for food and shelter may wander into farms, towns, and cities. This can lead to dangerous encounters and conflicts, as well as economic losses for farmers and communities.

Example: Elephants in Africa and Asia frequently raid crops when their natural food sources become scarce, causing significant agricultural damage.

Example: Tigers in India and Southeast Asia sometimes enter villages due to habitat destruction, leading to deadly encounters.

Example: Bears in North America increasingly rummage through urban trash bins as their natural food sources, such as berries and fish, become less abundant due to climate change.

- a) **Increased Risk of Disease Transmission:** Closer interactions between humans and wildlife also raise the risk of zoonotic diseases (diseases transmitted from animals to humans). Deforestation and climate-induced habitat loss can bring wild animals into closer contact with human populations, increasing the chances of outbreaks of diseases such as Ebola, avian influenza, and coronaviruses.
- b) **Displacement of Indigenous and Rural Communities:** Many indigenous and rural populations depend on natural ecosystems for their way of life. As wildlife moves into new areas or becomes scarce, these communities face difficulties in maintaining traditional practices, such as hunting and fishing, leading to economic and cultural disruptions.

3. Economic Losses: The economic consequences of climate change are widespread, affecting industries such as fisheries, agriculture, and tourism.

a) **Fisheries and Marine Industries:**

- Rising ocean temperatures and acidification have led to widespread coral bleaching, which affects marine biodiversity and disrupts fish populations.
- Fish that thrive in cooler waters are moving toward the poles, making it difficult for traditional fishing communities to sustain their livelihoods.
- Overfishing in new areas due to shifting fish populations can lead to ecological damage and reduced future yields.

b) **Agricultural Challenges:**

- Changing rainfall patterns, prolonged droughts, and extreme heatwaves threaten food production. Crops that once thrived in certain regions may struggle, leading to reduced yields and food shortages.
- Increased pest activity due to warmer temperatures further threatens crops, forcing farmers to invest in expensive pest control measures.
- Farmers face higher production costs, which result in increased food prices for consumers.

c) **Decline in Tourism and Conservation Efforts:**

- The destruction of natural attractions, such as coral reefs, rainforests, and savannas, reduces the appeal of ecotourism destinations.
- Countries that rely on wildlife tourism, such as Kenya, South Africa, and Australia, suffer economic setbacks as species decline and ecosystems degrade.
- Conservation programs struggle to secure funding as tourism revenue declines, further threatening endangered species and protected areas.

VIII. CONCLUSION

The impact of climate change on wildlife and ecosystems is profound and far-reaching. Rising temperatures force species to migrate, leading to habitat shifts that disrupt ecosystems. Ocean acidification threatens marine life, while phenological changes create mismatches in breeding and food availability. Ultimately, species that cannot adapt face a high risk of extinction. Addressing climate change requires global efforts to reduce greenhouse gas emissions, protect habitats, and implement conservation strategies to help species survive in a rapidly changing world. International cooperation and climate action are essential to safeguarding biodiversity and ensuring the long-term health of our planet.

REFERENCES

1. Parmesan, C. (2006). "Ecological and evolutionary responses to recent climate change." Annual Review of Ecology, Evolution, and Systematics, 37(1), 637-669.
2. Thomas, C.D. et al. (2004). "Extinction risk from climate change." Nature, 427(6970), 145-148.

3. Root, T.L. et al. (2003). "Fingerprints of global warming on wild animals and plants." *Nature*, 421(6918), 57-60.
4. Hoegh-Guldberg, O. et al. (2007). "Coral reefs under rapid climate change and ocean acidification." *Science*, 318(5857), 1737-1742.
5. Parmesan, C. & Yohe, G. (2003). "A globally coherent fingerprint of climate change impacts across natural systems." *Nature*, 421(6918), 37-42.
6. Lovejoy, T.E. & Hannah, L. (2019). "Biodiversity and climate change: Transforming the biosphere." Yale University Press.
7. Hughes, L. (2000). "Biological consequences of global warming: Is the signal already apparent?" *Trends in Ecology & Evolution*, 15(2), 56-61.
8. Dawson, T.P. et al. (2011). "Beyond predictions: Biodiversity conservation in a changing climate." *Science*, 332(6025), 53-58.
9. Sala, O.E. et al. (2000). "Global biodiversity scenarios for the year 2100." *Science*, 287(5459), 1770-1774.
10. Walther, G.-R. et al. (2002). "Ecological responses to recent climate change." *Nature*, 416(6879), 389-395.
11. McCarty, J.P. (2001). "Ecological consequences of recent climate change." *Conservation Biology*, 15(2), 320-331.
12. Deutsch, C.A. et al. (2008). "Impacts of climate warming on terrestrial ectotherms across latitude." *Proceedings of the National Academy of Sciences*, 105(18), 6668-6672.
13. Jetz, W. et al. (2007). "Projected impacts of climate and land-use change on the global diversity of birds." *PLoS Biology*, 5(6), e157.
14. Cahill, A.E. et al. (2013). "How does climate change cause extinction?" *Proceedings of the Royal Society B*, 280(1750), 20121890.
15. Scheffers, B.R. et al. (2016). "The broad footprint of climate change from genes to biomes to people." *Science*, 354(6313), aaf7671.
16. Tewksbury, J.J. et al. (2008). "Putting the heat on tropical animals." *Science*, 320(5881), 1296-1297.
17. Urban, M.C. (2015). "Accelerating extinction risk from climate change." *Science*, 348(6234), 571-573.
18. Moritz, C. & Agudo, R. (2013). "The future of species under climate change: Resilience or decline?" *Science*, 341(6145), 504-508.
19. Willis, C.G. et al. (2008). "Phylogenetic patterns of species loss in Thoreau's woods reflect climate change." *Proceedings of the National Academy of Sciences*, 105(44), 17029-17033.
20. Bellard, C. et al. (2012). "Impacts of climate change on the future of biodiversity." *Ecology Letters*, 15(4), 365-377.



INTERNATIONAL
STANDARD
SERIAL
NUMBER
INDIA



INTERNATIONAL JOURNAL OF INNOVATIVE RESEARCH

IN SCIENCE | ENGINEERING | TECHNOLOGY

 9940 572 462  6381 907 438  ijirset@gmail.com



www.ijirset.com

Scan to save the contact details