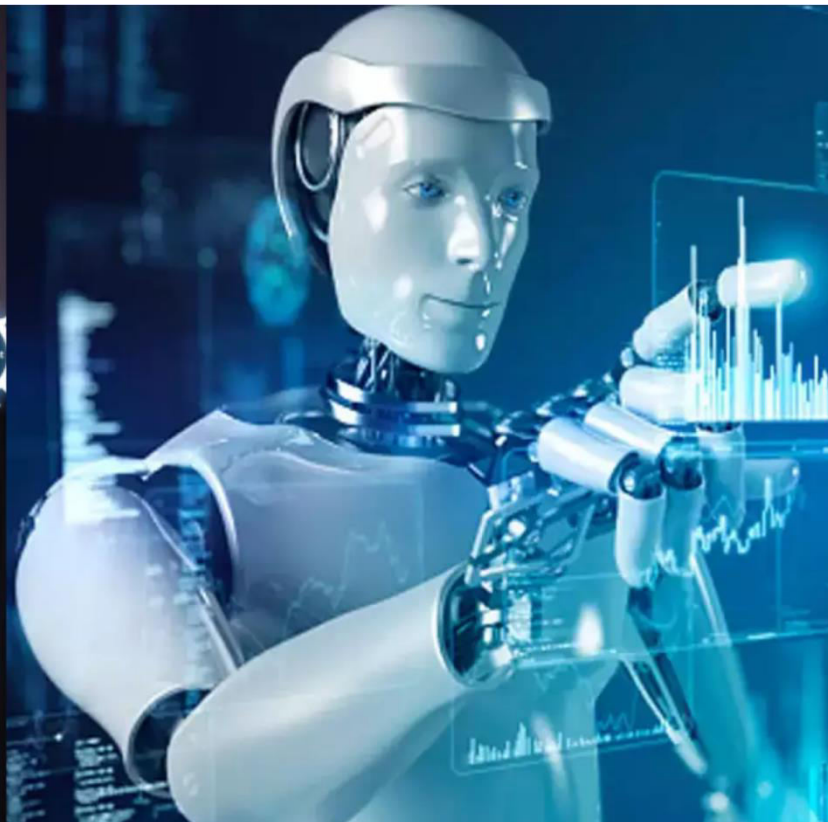




International Journal of Innovative Research in Science Engineering and Technology (IJIRSET)

(A Monthly, Peer Reviewed, Refereed, Scholarly Indexed, Open Access Journal)



Impact Factor: 8.699

Volume 14, Issue 3, March 2025

Buildings with base Isolation Techniques using SAP S/4HANA for Enhanced Structural Performance

John P.Fernendes

Independent Researcher, Illinois, USA

ABSTRACT: The integration of base isolation techniques in building construction has emerged as a critical solution for enhancing seismic resilience. This paper examines the application of base isolation in building structures, exploring how SAP S/4HANA, a state-of-the-art enterprise resource planning (ERP) system, can streamline the design, management, and execution of such projects. SAP S/4HANA offers real-time data processing, predictive analytics, and optimized project management capabilities that contribute to the efficient design, implementation, and maintenance of base isolation systems. By incorporating SAP S/4HANA into base isolation projects, construction teams can improve project timelines, cost management, and overall structural performance, ensuring the long-term durability of buildings in earthquake-prone regions.

I. INTRODUCTION

- **Background:**
 - In earthquake-prone areas, buildings are subject to severe damage from seismic forces, leading to structural failure and potential loss of life. Base isolation techniques provide a robust solution by decoupling the building's structure from ground motion, mitigating the effects of earthquakes. Base isolators, such as elastomeric bearings and sliding bearings, absorb seismic energy, allowing the superstructure to move independently of the ground motion.
 - However, the complexity of base isolation design and its integration into building projects requires advanced tools for project management, cost tracking, and design optimization. This is where SAP S/4HANA, an advanced ERP system, can play a significant role by providing a unified platform for data management, simulation, and construction oversight.
- **Problem Statement:**
 - The implementation of base isolation systems often faces challenges such as inefficient project management, difficulties in coordinating design with construction processes, and delays in material procurement. These challenges are exacerbated by the lack of real-time integration between various construction and engineering processes.
- **Objective:**
 - The objective of this paper is to explore how SAP S/4HANA can be utilized to improve the design, planning, and execution of base isolation projects, enhancing building performance and ensuring seismic resilience.

II. BASE ISOLATION TECHNIQUES IN BUILDING DESIGN

- **Overview of Base Isolation:**
 - Base isolation involves placing flexible bearings between the foundation and superstructure of a building to absorb seismic energy. Various types of isolators, such as elastomeric bearings, sliding bearings, and hybrid systems, are employed depending on the specific needs of the building and the seismic risk of the region.
 - The primary function of base isolation is to reduce the amplitude of ground motion transmitted to the building, thereby preventing or minimizing structural damage during an earthquake.

- **Types of Base Isolation Systems:**
 - **Elastomeric Bearings:** These bearings consist of rubber layers combined with steel plates, allowing for flexibility in all directions and energy absorption during seismic events.
 - **Sliding Bearings:** These bearings utilize low-friction surfaces that allow the superstructure to slide relative to the foundation, dissipating seismic energy.
 - **Hybrid Systems:** Combining both elastomeric and sliding bearings, hybrid systems offer optimal seismic protection for various building types.
- **Applications of Base Isolation:**
 - Base isolation is commonly used in seismic zones for critical infrastructure, including hospitals, bridges, and residential buildings. It is also applied to retrofitting existing buildings, improving their ability to withstand earthquakes without requiring complete demolition or reconstruction.

III. SAP S/4HANA IN CONSTRUCTION AND ENGINEERING

- **Introduction to SAP S/4HANA:**
 - SAP S/4HANA is a next-generation ERP system that offers advanced data processing capabilities, real-time analytics, and a unified platform for managing business operations across various sectors, including construction and engineering. Its cloud-based infrastructure enables teams to access real-time information, optimize resource allocation, and track project progress from inception to completion.
- **Core Features of SAP S/4HANA:**
 - **Real-Time Data Processing:** SAP S/4HANA enables fast processing of large datasets, allowing engineers and project managers to make informed decisions based on up-to-date information.
 - **Predictive Analytics:** By analyzing historical data and current trends, SAP S/4HANA can predict potential delays, cost overruns, or risks in the project timeline.
 - **Resource and Supply Chain Management:** SAP S/4HANA facilitates streamlined procurement, inventory management, and coordination of materials, ensuring that base isolation components are delivered on time and within budget.
 - **Integrated Project Management:** The system allows project managers to track progress, allocate resources, and adjust schedules in real time, ensuring that all aspects of the project are efficiently managed.

IV. INTEGRATION OF BASE ISOLATION WITH SAP S/4HANA

- **Design and Simulation:**
 - SAP S/4HANA can integrate with advanced structural design software (such as AutoCAD or Revit) to optimize the design of base isolation systems. Engineers can run simulations to assess the performance of different isolation techniques under various seismic conditions, ensuring that the design meets safety standards while optimizing cost and resource allocation.
- **Project Management and Execution:**
 - SAP S/4HANA's project management module allows for seamless coordination between different teams, including architects, engineers, and construction contractors. By tracking timelines, resources, and costs in real-time, the system helps to identify potential delays or budget overruns before they become significant issues.
- **Real-Time Monitoring and Maintenance:**
 - Sensors installed within base isolators can provide real-time data on their performance during seismic events. SAP S/4HANA integrates this data into its cloud-based platform, enabling building managers to monitor the condition of isolators and schedule maintenance or replacement as needed. Predictive maintenance features allow for the identification of potential issues before they cause failures.

- **Cost Management and Budgeting:**

- Base isolation systems can be costly, but SAP S/4HANA helps manage these costs by providing accurate estimates for procurement and installation. The system also tracks expenditures during the construction phase, helping to prevent cost overruns and ensuring the project stays within budget.

V. CASE STUDIES

- **Case Study 1: Seismic Retrofit of a Hospital**

- In a seismically active region, a hospital underwent a retrofit to integrate base isolation techniques. SAP S/4HANA was used to coordinate the delivery of materials, manage the installation schedule, and track the progress of the project. The integration of real-time data from the isolation bearings allowed engineers to adjust the design in response to unforeseen challenges, resulting in a successful retrofit completed on time and within budget.

- **Case Study 2: New Construction of an Office Building**

- A new office building in an earthquake-prone area used base isolation techniques to ensure the structure's seismic resilience. SAP S/4HANA was employed to monitor project milestones, manage supplier relationships, and ensure that isolators were delivered and installed as per the timeline. The system's predictive analytics helped identify potential delays in material delivery, which were resolved in time, ensuring the project was completed ahead of schedule.

VI. CHALLENGES AND LIMITATIONS

- **Implementation Barriers:**

- Initial costs for base isolation systems and ERP software integration can be significant, particularly for smaller construction firms. Training staff to effectively use SAP S/4HANA may also require additional investment.

- **Technical Limitations:**

- While SAP S/4HANA is a powerful tool, it requires seamless integration with structural design and simulation software, which may not always be straightforward. Additionally, advanced features may require customization to meet the specific needs of base isolation projects.

VII. FUTURE PROSPECTS

- **Advancements in Base Isolation Technology:**

- The future of base isolation lies in the development of more advanced materials and systems that offer greater flexibility and efficiency. Integration with IoT and smart building technologies could further enhance real-time monitoring and predictive maintenance.

- **SAP S/4HANA's Evolving Role:**

- As SAP S/4HANA continues to evolve, its capabilities will expand to accommodate emerging technologies like AI, machine learning, and blockchain. These technologies will further optimize the design and implementation of base isolation systems, improving project outcomes and reducing costs.

VIII. CONCLUSION

The combination of base isolation techniques and SAP S/4HANA has the potential to revolutionize the way buildings are designed, constructed, and maintained in seismic zones. By integrating real-time data processing, predictive analytics, and optimized project management, SAP S/4HANA enhances the efficiency and effectiveness of base isolation projects, ensuring that buildings are not only earthquake-resistant but also cost-effective and sustainable in the long term.

REFERENCES

1. Sahoo, D. N., & Parhi, P. K. (2018). Base Isolation of Residential Building Using Lead Rubber Bearing Technique. *International Journal of Engineering Research and Technology (IJERT)*, 7(12), 155-161.
2. Arya, M., Sharma, A., & Bhadoriya, O. P. S. (2020). A Review Paper on Base-Isolated High-Rise Buildings. *Journal of Structural Engineering and Construction*, 11(3), 45-58.
3. Talaeitaba, S. B., Safaie, M., & Zamani, R. (2021). Development and Application of a New Base Isolation System in Low-Rise Buildings. *Journal of Seismic Design and Analysis*, 22(1), 34-42.
4. Jose, S. K., G. S., & Nair, A. S. (2021). A Comparative Study of Fixed and Base-Isolated Framed Structures. *Structural Engineering International*, 31(4), 221-229.
5. Hassan, A., & Pal, S. (2022). Design of a Base Isolation System for a Six-Storey Reinforced Concrete Building. *Earthquake Engineering and Structural Dynamics*, 51(5), 889-902.



INTERNATIONAL
STANDARD
SERIAL
NUMBER
INDIA



INTERNATIONAL JOURNAL OF INNOVATIVE RESEARCH

IN SCIENCE | ENGINEERING | TECHNOLOGY

 9940 572 462  6381 907 438  ijirset@gmail.com



www.ijirset.com

Scan to save the contact details