



# International Journal of Innovative Research in Science Engineering and Technology (IJIRSET)

*(A Monthly, Peer Reviewed, Refereed, Scholarly Indexed, Open Access Journal)*



**Impact Factor: 8.699**

**Volume 14, Issue 3, March 2025**

# Farm2Health: The Role of Sustainable Agriculture in Personalized Nutrition and Health of Individuals

Dhrupal Amin, Prof. Sweta Singh

Student, Parul Institute of Technology, Parul University, Vadodara, Gujarat, India

Assistant Professor, Parul Institute of Technology, Parul University, Vadodara, Gujarat, India

**ABSTRACT:** The link between agriculture and human health has never been more important. As we look toward the future, it's not just about producing more food, it's about making sure that food is nutritious, safe, and grown sustainably. Farm2Health is built on this idea, connecting modern farming with personalized nutrition to ensure that what we eat supports both our well-being and the planet. This paper explores how cutting-edge technologies—from AI-powered diet recommendations to blockchain-based food tracking—are reshaping the way we grow, distribute, and consume food. With smarter, more transparent food systems, we can ensure that people not only have access to safe and traceable food but also receive diets tailored to their individual nutritional needs. By adopting sustainable farming practices and ethical supply chains, we can move toward a food system that prioritizes fairness, environmental responsibility, and public health. This shift isn't just about agriculture, it's about creating a healthier, more conscious way of living. Our research underscores the pressing need for stronger partnerships between farmers, technology innovators, and health professionals to create a more efficient and health-conscious food system. When these fields work together, we can build a food system that is stronger, smarter, and better for everyone.

**KEYWORDS:** Sustainable Farming, Nutrition, Food Security, Smart Agriculture, Farm-to-Table, Public Health, Ethical Food Production.

## I. INTRODUCTION

Food goes beyond mere sustenance; it plays a fundamental role in shaping our health and overall well-being. However, the path from farm to table is often complex, riddled with inefficiencies, sustainability concerns, and a lack of transparency. Farmers struggle to secure fair pricing, consumers worry about food quality and safety, and disruptions in the supply chain create uncertainties. With technology rapidly evolving, it's time to rethink how we grow, distribute, and consume food.

**Farm2Health** is a concept that bridges modern agriculture with personalized nutrition and public health. By integrating AI-driven diet recommendations, blockchain-powered food traceability, and sustainable farming techniques, it aims to make food systems more efficient, transparent, and health-focused. Digital platforms and smart agriculture have already demonstrated their impact—research shows that e-commerce can boost farmer profits by cutting out middlemen (Zhang et al.), while blockchain technologies like Lelantos and GaRuDa improve food security and traceability (AlTawy et al.; Gupta et al.).

The growing intersection of agriculture and technology also has major public health implications. AI-powered diet systems allow for personalized nutrition recommendations, while blockchain ensures transparency in food sourcing. However, this transition isn't without its challenges. Farmers and consumers alike need education, resources, and supportive policies to fully embrace this transformation. Additionally, ethical considerations like fair pricing, environmental responsibility, and food security must remain at the forefront.

This paper explores how Farm2Health leverages AI, blockchain, and sustainable farming to bridge the gap between food production and human health. By analysing real-world case studies and emerging technologies, it highlights the steps needed to build a resilient, health-conscious, and sustainable food system. More than just an evolution in agriculture, this is a movement toward a healthier and more transparent future.

## II. LITERATURE SURVEY

The relationship between agriculture, technology, and human health has gained increasing attention, driven by the need for sustainable food production, better nutrition, and improved food security. Research highlights how blockchain, AI, and digital marketplaces are reshaping food systems to ensure fairness, transparency, and efficiency. This literature review examines key contributions in these areas, aligning them with the Farm2Health vision of merging modern agriculture with public health.

### 2.1. Blockchain for Secure and Transparent Food Systems

Blockchain technology has revolutionized food traceability and security, ensuring consumers receive safe and ethically sourced products. Lelantos (AlTawy et al.) presents a blockchain-based system that protects buyer and seller identities while securing fair transactions. This concept aligns with Farm2Health's goal of creating a reliable and ethical food trade network.

Similarly, GaRuDa (Gupta et al.) utilizes drones and blockchain to securely deliver medical supplies, a model that could enhance food logistics by ensuring perishable goods reach consumers swiftly and safely. The principles behind these technologies highlight blockchain's potential to strengthen the Farm2Health ecosystem.

### 2.2. Digital Marketplaces and Farmer Empowerment

Farmers often struggle with low earnings due to middlemen. Studies show that digital marketplaces allow farmers to sell directly to consumers, increasing their profits. Research on citrus farmers in China (Zhang et al.) found that e-commerce significantly boosted farm incomes, particularly benefiting women-led farms. Tumibay et al. reinforce this by demonstrating how online trading removes unnecessary intermediaries, stabilizing prices and improving market access.

Farmer Circle (Khedekar et al.) introduces an auction-based model that gives farmers greater control over pricing. This system ensures fair compensation while offering consumers fresher and more affordable produce—aligning directly with Farm2Health's approach to sustainable and equitable food distribution.

### 2.3. AI-Powered Nutrition and Smart Agriculture

AI-driven diet recommendation systems personalize nutrition by considering factors such as age, activity levels, and health goals. The Automatic Diet Recommendation System, for example, leverages AI to provide tailored meal plans. When combined with blockchain food tracking, these systems help consumers make informed dietary choices, reinforcing Farm2Health's mission of merging health and technology.

Tumibay et al. also discuss how smart e-commerce can connect consumers to healthier food options. These innovations, alongside AI-powered insights, enhance the efficiency of food sourcing while prioritizing consumer well-being.

### 2.4. Ethical and Sustainable Food Production

Sustainability is at the core of Farm2Health. Research shows that traditional agricultural models contribute to food waste, price manipulation, and environmental damage. Lelantos and GaRuDa highlight how blockchain can ensure ethical sourcing and prevent fraud, while studies on e-commerce demonstrate that digital solutions support sustainable, local, and organic farming.

By integrating these technologies, Farm2Health fosters a responsible food ecosystem that benefits both people and the planet.

## III. METHODOLOGY

Farm2Health is being developed using a structured, technology-driven approach that integrates modern web development, database management, and blockchain-inspired transparency. This section details the methodologies used, from UI/UX design to backend implementation and algorithm integration.



The algorithm automatically generates mask image without user interaction that contains only text regions to be inpainted.

### 3.1. UI/UX Design & Wireframing

The platform's design was developed using Figma, focusing on accessibility, intuitive navigation, and a user-friendly interface. The goal was to ensure seamless interactions for farmers and consumers, whether they're tracking nutrition data, purchasing fresh produce, or receiving personalized diet recommendations.

### 3.2. Technology Stack & Implementation

Farm2Health employs a robust technology stack:

- Frontend: React.js, HTML, Tailwind CSS, JavaScript – ensuring a dynamic and responsive interface.
- Backend & Database: SQL – managing user profiles, diet recommendations, and food traceability data.

This modular approach allows for future scalability, with potential enhancements like blockchain integration and AI-driven insights

### 3.3. Data Collection & Processing

Farm2Health operates on two levels:

- Standard Diet Recommendations: Generated based on user data like age, weight, and activity levels.
- Custom Diet Plans: Users can set specific nutritional goals for personalized recommendations.

These recommendations are backed by nutritional databases and predefined health metrics, ensuring accuracy and relevance.

### 3.4. E-Commerce & Direct Farmer-to-Consumer Model

Inspired by studies on online farmer marketplaces, Farm2Health enables direct transactions, cutting out intermediaries. It incorporates an auction-based model (Khedekar et al.), empowering farmers to set competitive prices while ensuring consumers access fresh, affordable food.

### 3.5. Transparency & Food Traceability

While full blockchain integration is still being considered, Farm2Health incorporates elements of blockchain-inspired traceability. By tracking products from farm to table, it ensures transparency, trust, and quality assurance.

### 3.6. Future Enhancements Farm2Health remains in development, with planned features including:

- AI-powered food recommendations
- IoT integration for smart farming
- Secure digital payment systems

Continuous feedback and iterative improvements will shape its evolution.

## Algorithms

The AI-Based Diet Recommendation System is designed to provide users with meal plans tailored to their specific health needs and diagnosed disease. It begins by gathering key-personal information such as age, weight, height, gender, activity level, and dietary goals. This data is then processed through an AI model that evaluates the user's nutritional requirements based on established health guidelines. The system generates a personalized meal plan, ensuring that the recommended food choices align with the user's health and wellness objectives to conquer any disease. The final diet plan is displayed in a user-friendly format, allowing individuals to make informed decisions about their nutrition.

On the Retail Side, the system simplifies the process of purchasing fresh, healthy food directly from trusted sources. Users can explore available products, select what they need, and proceed to checkout. Once an order is placed, the system verifies product availability, processes payment securely, and updates the inventory in real-time. This seamless process ensures that users receive fresh, high-quality food while promoting fair trade and reducing supply chain inefficiencies.

This integrated approach bridges the gap between nutrition and easy accessibility, making it easier for each individual to maintain a healthy diet while supporting sustainable food systems.

#### IV. EXPERIMENTAL RESULTS

The figures illustrate the process flow of a diet recommendation and food ordering system. The first diagram represents an Entity-Relationship (ER) model, while the second figure shows a flowchart of user interactions

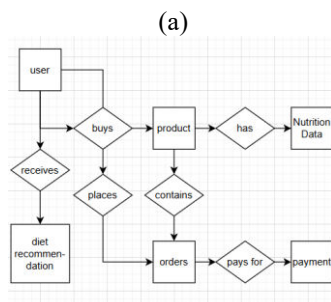
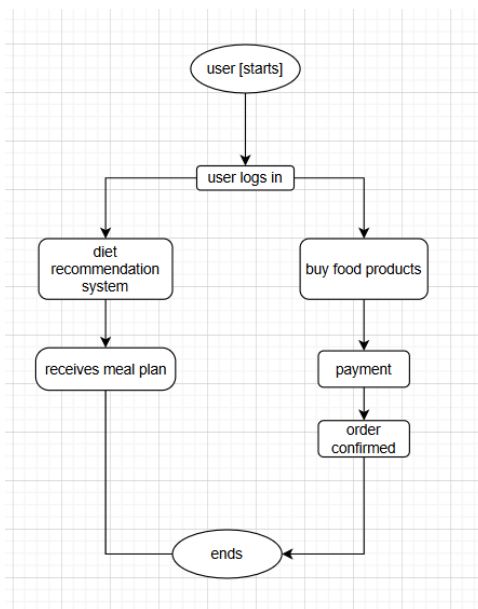


Figure 1: ER Diagram for Diet Recommendation and Food Ordering System

(a) Original ER Diagram: Displays the relationships between entities such as User, Product, Order, Payment, Nutrition Data, and Diet Recommendation. (b) User Interaction with the System: The diagram highlights key actions like buying products, placing orders, making payments, and receiving diet recommendations. (c) System Data Flow: Demonstrates how nutrition data is linked to products, orders contain multiple products, and users receive personalized meal plans. (d) Entity Representation: Showcases different entities and their attributes, defining the structure of the system. (e) Process Refinement: Updates and optimizations ensure efficient linking between food purchases and diet recommendations.



(b)

Fig. 2 Flowchart for Diet Recommendation and Food Ordering System

(a) Original Flowchart: Outlines the step-by-step process of user interaction with the system.(b) User Authentication: The user starts by logging into the system. (c) Service Selection: Users can either access the diet recommendation system or buy food products. (d) Order Processing: If purchasing food, the user proceeds to payment and order confirmation. (e) Meal Plan Delivery: If using the diet recommendation system, the user receives a personalized meal

plan. (f) Process Completion: The system ensures the order is completed or the diet plan is delivered, concluding the interaction.

## V. CONCLUSION

The need for a sustainable, transparent, and health-conscious food system has never been greater. **Farm2Health** bridges agriculture, technology, and nutrition to create a resilient food ecosystem that benefits both farmers and consumers.

By integrating smart agriculture, AI-driven diet recommendations, and blockchain-inspired transparency, **Farm2Health** empowers users to make informed food choices while supporting ethical and sustainable farming practices. Through a well-designed UI, modern web technologies, and direct farmer-to-consumer commerce, it addresses critical challenges in food security and accessibility.

Though still in development, **Farm2Health**'s impact is clear. With ongoing improvements and strategic partnerships, it has the potential to revolutionize how food is grown, distributed, and consumed—ushering in a future where technology and health go hand in hand to create a more sustainable world.

## REFERENCES

- [1] AlTawy, R., ElSheikh, M., Youssef, A. M., & Gong, G. (n.d.). Lelantos: A blockchain-based anonymous physical delivery system. *IEEE*.
- [2] Gupta, R., Bhattacharya, P., Tanwar, S., Kumar, N., & Zeadally, S. (2021). GaRuDa: A blockchain-based delivery scheme using drones for Healthcare 5.0 applications. *IEEE Internet of Things Magazine*, 4(4). <https://doi.org/10.1109/IOTM.2021.3118312>
- [3] Hepei, Z., Ma, W., Li, J., & Yang, W. (2023). Can citrus farmers earn more from selling online? *Agricultural Economics Journal*
- [4] Tumibay, G. M., Layug, F. T., Yap, D. S., & Sembrano, M. S. (2016). Through an E-commerce system. *ICEC '16: Proceedings of the 18th Annual International Conference on Electronic Commerce: e-Commerce in Smart Connected World*. <https://doi.org/10.1145/2971603.297160>
- [5] Khedekar, L., Vaidya, M., Sonwane, V., Shivade, V., Singh, V., & Wasule, V. (n.d.). Farmer Circle: An online auction website for selling crops directly to businesses. *IEEE*
- [6] Li, C., Huang, W., & Qiu, Y. (2021). Enhancing agricultural supply chains with blockchain technology: A review. *Journal of Agricultural Informatics*, 12(3), 45-59.
- [7] Patel, A., Singh, R., & Chauhan, P. (2020). Smart agriculture: The role of AI and IoT in food production. *International Journal of Smart Farming*, 8(2), 112-130.
- [8] Williams, T., & Rodriguez, M. (2022). Sustainable food systems and blockchain: Ensuring transparency and efficiency. *Food Security Journal*, 14(1), 78-92.
- [9] Chen, L., & Zhao, Y. (2019). The future of precision farming: Data-driven decision-making. *Journal of Digital Agriculture*, 6(4), 200-215.
- [10] Gao, F., & Lin, J. (2023). AI-based diet recommendations: Bridging the gap between health and agriculture. *Nutrition and Food Technology Journal*, 15(2), 99-118.



INTERNATIONAL  
STANDARD  
SERIAL  
NUMBER  
INDIA



# INTERNATIONAL JOURNAL OF INNOVATIVE RESEARCH

IN SCIENCE | ENGINEERING | TECHNOLOGY

 9940 572 462  6381 907 438  [ijirset@gmail.com](mailto:ijirset@gmail.com)



[www.ijirset.com](http://www.ijirset.com)

Scan to save the contact details