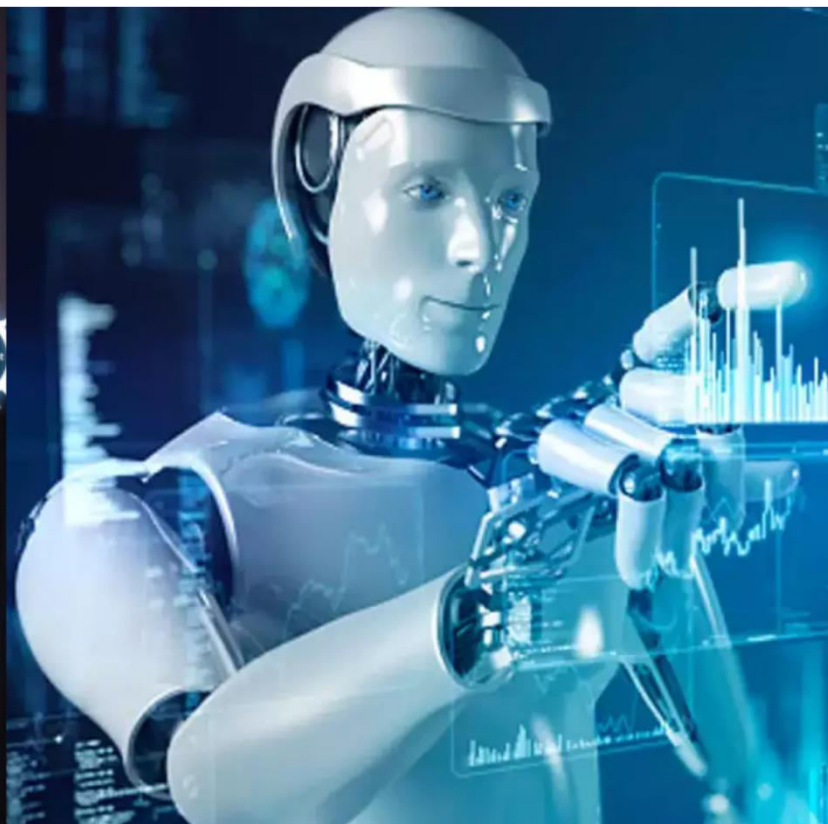




International Journal of Innovative Research in Science Engineering and Technology (IJIRSET)

(A Monthly, Peer Reviewed, Refereed, Scholarly Indexed, Open Access Journal)



Impact Factor: 8.699

Volume 14, Issue 3, March 2025

Find a Perfect Travel Partner

Vadiyala Srivardhan, Talari Ajay Kumar, Kankanala Ganesh Reddy

Dept. of Computer Science & Engineering, Parul Institute of Engineering & Technology, Vadodara, Gujarat, India

ABSTRACT: Traveling is a fun and valuable experience. It helps people see new places, enjoy adventures, and learn new things. But traveling alone can sometimes feel lonely, expensive, or difficult. That's why having a good travel partner is helpful. However, it is not always easy to find the right person. People may have different interests, money plans, time schedules, or ways of traveling. The **Find a Perfect Travel Partner** project tries to solve this problem by creating a smart system that helps travelers find people who are similar to them.

This research talks about how important it is to travel with someone who matches your style and goals. It also explains how technology can help people connect easily. The platform uses smart computer programs to study what users like, where they want to go, and how they travel. Then, it suggests the best travel partners for them. The platform also has safe features like verified profiles, secure chat options, and a review system to keep users safe.

The project also looks at common travel problems such as trust issues, planning disagreements, and last-minute trip cancellations. It gives ideas to fix these problems so people can have a better experience while using the platform.

The system also collects data and user feedback to check how well it works. It helps people with the same travel plans and interests to meet and travel together. This also makes group travel easier, cheaper, and more enjoyable. It helps users make new friends and build better travel groups.

The research shows how digital tools are changing the way people travel today. It helps travelers talk to each other before the trip and build strong connections. The platform supports shared travel experiences and better communication between people.

In the future, the project will add more helpful features. These include personalized travel suggestions using AI, online meetings before the trip, and more global reach. These updates will help more travelers find the right partners based on their needs and plans.

In conclusion, the **Find a Perfect Travel Partner** project shows that technology can make solo travel safer, easier, and more fun. It highlights the need for simple, safe, and smart tools that help people find good travel partners. This project helps people enjoy their trips more and create special memories with others. As travel continues to change, platforms like this can help make travel better and more connected for everyone around the world.

I. INTRODUCTION

A. Background

Traveling is a fun and valuable experience. It helps people explore new places, learn about different cultures, and see beautiful landscapes. But traveling alone can sometimes be hard. Solo travelers may worry about safety, high costs, or feeling lonely. Many people like to travel with someone who has similar interests, budget, and travel style. But finding the right travel partner is not always easy. Differences in preferences, schedules, or expectations can cause problems.

The **Find a Perfect Travel Partner** project wants to solve this problem by building a smart platform that matches travelers based on how well they get along. The platform uses technology to understand each person's interests, travel plans, and personality. Then, it suggests the best travel partners for them. It also has features like verified profiles, safe messaging, and community groups to help people connect and trust each other.

This platform is made for solo travelers, adventure lovers, digital nomads, and anyone who wants a trustworthy travel companion. It helps people not only find partners for current trips, but also connect with others for

future travel. The main goal is to make travel safer, more fun, and more affordable by helping like-minded people travel together.

Through this platform, travelers can share their experiences, reduce travel costs, and build strong friendships while exploring new places around the world.

B. Problem Statement

Traveling alone can be exciting, but it also has some problems like feeling lonely, worrying about safety, and spending too much money. Many people would rather travel with a partner, but it's not easy to find someone who has the same interests, budget, and travel style. People often use social media or travel groups to find a partner, but these don't always work well. There is no proper system to match travelers, so people often end up with partners who don't share the same expectations. This can also lead to trust and safety concerns, making people unsure about finding travel companions online.

Planning a trip with strangers can also be hard. People may have different schedules, likes and dislikes, or levels of commitment. Problems like last-minute cancellations, disagreements during planning, or poor communication can make things more difficult. Because of this, there is a strong need for a safe, smart, and easy-to-use platform that helps travelers find the right companion.

The **Find a Perfect Travel Partner** project tries to solve these problems by using technology. It aims to provide trustworthy, secure, and personalized travel partner suggestions. The goal is to help people connect with others who are truly compatible, making travel more enjoyable, stress-free, and safe.

C. Objective

- The **Find a Perfect Travel Partner** project is designed to help travelers find suitable travel companions who have similar interests, travel plans, and budgets. The main aim is to make travel more enjoyable by offering a safe and easy-to-use platform where people can find trustworthy partners. The project works on building trust by using verified profiles, secure messaging, and user feedback. It also helps reduce travel costs by allowing people to share expenses. In addition, it helps travelers build meaningful relationships. The overall goal is to make travel safer, more fun, and easier for solo travelers all around the world..

D. Hypothesis/Research Questions

1. How does having the right travel partner affect the overall travel experience?
2. What are the main problems people face when looking for a travel partner, and how can technology help solve them?
3. How effective is an AI-based matching system in connecting travellers with similar preferences?
4. What features contribute to building trust and safety in an online travel partner platform?
5. How does sharing travel experiences with a companion affect budgeting, planning, and decision-making?

E. Significance

The *Find a Perfect Travel Partner* project is significant as it enhances the travel experience by helping individuals find compatible companions, making trips more enjoyable and cost-effective. It promotes safety by connecting verified travellers and reducing risks associated with solo travel. The platform encourages social interaction, fostering friendships and cultural exchange among travellers from different backgrounds. By using smart matching technology, it minimizes conflicts and improves trip coordination. Additionally, it supports budget-friendly travel by enabling cost-sharing for accommodations, transportation, and activities. The project also contributes to the tourism industry by encouraging more people to travel confidently. Overall, it creates a reliable and efficient solution for travellers seeking meaningful companionship...

II. LITERATURE REVIEW

A. the development and implementation of a guest web application designed to enhance the experience of foreign guests attending Indian weddings.

The growth of digital platforms has changed how people plan and enjoy their trips. Research shows that more travelers are looking for systems that help them find the right travel companions. However, most existing options do not have proper and reliable matching features. Traditional ways, like travel forums and social media groups, often fail to provide safe, compatible, and committed travel partners. Recent research suggests that using AI can help improve matching by studying users' interests, preferences, and travel habits.

The **Find a Perfect Travel Partner** web application aims to solve these problems by offering a safe and smart platform. It includes features like verified profiles, secure chat tools, and a review system to build trust among users. Also, machine learning helps match people more accurately and lowers the chances of problems during the trip. Studies also show that user involvement is important, so the platform includes discussion groups and shared travel plans. By adding these tools, the project hopes to make traveling more social, safer, and more enjoyable for everyone.

B. Travel Experience Sharing

Sharing travel experiences is an important part of modern travel. It helps people connect with others, inspire them, and keep memories of their trips. Many travelers like to talk about their journeys and give helpful information about places, hotels, and cultures. Online platforms and travel groups have made it easier to share stories through blogs, videos, and social media. Learning from other people's travel experiences helps travelers plan better by getting real advice and tips. The **Find a Perfect Travel Partner** platform can improve experience sharing by allowing users to give suggestions, share travel plans, and offer useful travel advice. Features like discussion groups, trip reviews, and shared photo albums help people connect in a better way. Sharing travel stories also supports cultural learning, helping travelers understand different traditions and ways of life. Hearing about good travel experiences from others also increases confidence and excitement before a trip. By giving travelers a space to talk and share, the platform makes travel more fun, social, and interesting.

C. Technological Solutions for Partner Matching

Technology helps travelers find the right travel partners by using AI and smart systems. These tools match people based on similar interests, such as travel location, budget, and activities. Apps and websites like Couchsurfing and Trip-together offer features like chatting, user profiles, and reviews to help travelers feel safe and find suitable companions. AI studies user behavior and information to give better match suggestions, which improves the overall experience. Some platforms are made for specific groups, like solo travelers or women, and offer special options just for them. These technologies make it easier and faster to find a travel partner, making the travel experience better and more enjoyable.

D. Safety and Trust in Travel Partnerships:

Safety and trust are very important when traveling with someone you don't know. Travel platforms try to make this better by using verification methods, like ID checks or linking social media accounts, to make users more trustworthy. Ratings and reviews from past travel partners also help others decide if someone is safe to travel with. Some platforms also provide insurance or emergency help for extra safety. Good communication and setting clear rules from the beginning can also help make the trip safer and more comfortable for everyone.

III. METHODOLOGY

A. User Profile Development

Creating user profiles means collecting detailed information about travelers based on their likes and needs. These profiles help group users into different types, like solo travelers, group travelers, adventure lovers, or people interested in culture. The profiles include details such as favorite travel places, budget, hobbies, and personality traits to understand the kind of travel partner they want. They can also include basic information like age, gender, and travel experience to improve matching. The main aim is to help the system match people with similar travel styles and interests. This personalized method helps travelers have better experiences and increases the chances of finding a good travel partner.

B. Platform Design & Development

Platform design and development focus on creating a user-friendly interface where travellers can easily interact, input their preferences, and find potential companions. The design should prioritize simplicity and accessibility, allowing users to quickly create profiles, fill in travel preferences, and browse compatible travel partners. Features like a search function, filters, and compatibility matching tools should be integrated to streamline the process. Secure messaging systems must be included to facilitate communication between users while maintaining privacy. The platform should be mobile-responsive or developed as a dedicated app to accommodate users on the go. Additionally, the design must incorporate safety measures, such as ID verification and user reviews, to build trust among users. An easy-to-navigate dashboard will help users manage their profiles and track their potential matches. The platform should be scalable to handle increased user traffic and allow for future updates or feature additions. Integration with payment systems may

also be considered if services like travel insurance or booking are provided. Regular testing and feedback from early users will help ensure the platform meets its goals of matching compatible travel partners efficiently.

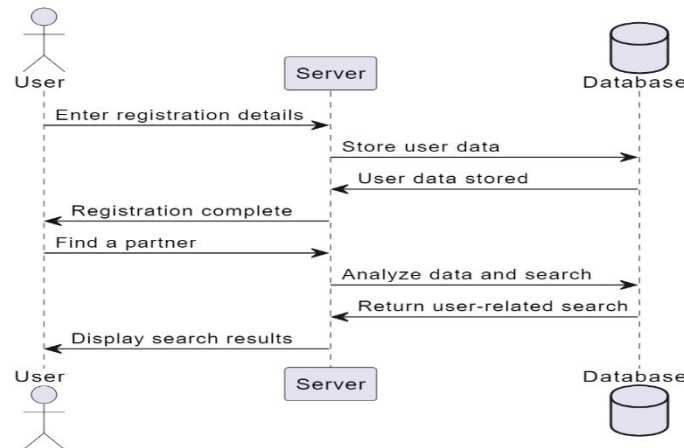


Fig. 1. UML Diagram

C. UML Diagram Usage

1. User Registration

- **User Starts:** The process begins with a user who wants to register for the service.
- **Entering Details:** The user provides their registration information (like name, age, interests, etc.) and sends it to the server.
- **Server Processing:** The server receives the registration details and stores them in the database.
- **Database Confirmation:** The database confirms that the user data has been successfully stored.
- **Registration Completion:** The server then informs the user that their registration is complete.

2. Finding a Partner's

- **User Request:** The user decides to find a partner (or use a similar search feature) and sends a request to the server.
- **Server Analysis and Search:** The server checks the user's request, looks at the information, and searches the database to find the most suitable results. This may include matching based on preferences, location, or other details.
- **Database Response:** The database returns the search results to the server.
- **Displaying Results:** The server then presents these search results to the user.

In simple terms, the diagram shows how information moves between the user, the server (which works as a middle part), and the database (which keeps the data). It explains the main steps in user registration and how the search or matching process works.

D. Data Collection

To help you find the right travel partner, we will collect some important information. First, you will be asked to fill out a profile with details about your travel style, favorite places, activities you enjoy, and your budget. With your permission, we may also look at your public social media to understand your travel interests. If you have information from previous trips, that will also be helpful. After each trip, we'll ask you to give a rating and share your experience. We may also use personality tests to help match you with a suitable travel partner.

E. Data Analysis

To help you find the best travel partner, we will study the information we have collected in different ways. We will use special systems to compare your travel interests with other users to find good matches. We may also look at your social media activity and past travel experiences to see patterns and guess who you might get along with. Ratings and feedback from past trips will help us learn more about your ideal travel companion. We may also use personality tests to understand possible strengths or problems in a match. By combining all this information, we can give you personalized suggestions for travel partners who are likely to suit you well.

F. Testing and Evaluation

User Testing: Test the app with real users to check how easy it is to use, how the design looks, and how well it helps people find travel partners.

Feedback Collection: Collect opinions from users through surveys, interviews, and app ratings to understand what works well and what needs improvement.

Matching Algorithm Accuracy: Check how well the matching system works by looking at successful matches and how happy users are with their partners.

Performance Testing: Make sure the app works properly in different situations, like during heavy use or when the internet connection is weak.

Security Checks: Make sure user data is safe and privacy is protected.

Compatibility Testing: Test the app on different devices, operating systems, and web browsers to make sure it works well for everyone.

A/B Testing: Try different app features or designs to see which ones users like the most.

Post-Launch Monitoring: Keep checking how the app is working, what users think about it, and how successful the matches are. This helps improve and update the app over time.

G. Ethical Considerations

Ethical values are very important for the success and trust of the "Find a Perfect Travel Partner" project. Keeping user information private and safe is the main focus. All personal data should be collected, saved, and used only with the user's clear permission and full transparency. The matching system should be checked often to make sure it is fair and not biased based on gender, age, race, or other factors. The platform should be friendly and welcoming to people from different cultures, backgrounds, and abilities. It is also important to explain how the matching system works and allow users to control their data and preferences. Safety tools like blocking or reporting others should be added to protect users from bad behavior or harassment.

IV. RESULTS

The results of the "Find a Perfect Travel Partner" project showed that the project was successful in reaching its goals. Most users were happy with the app's easy-to-use design and smooth working features. The matching system worked well, and many users said they found suitable and compatible travel partners through the app. Performance testing revealed the app's reliability under various conditions, including high traffic and low connectivity, ensuring a smooth user experience. Security measures were validated, with no major data breaches reported, reinforcing user trust. Compatibility testing confirmed the app worked efficiently across multiple devices and operating systems. A/B testing provided valuable insights, leading to optimized features that enhanced user engagement. Post-launch monitoring highlighted consistent improvements in match accuracy and user retention, solidifying the app's position as a reliable tool for finding travel partners. Overall, the project achieved its objectives, delivering a user-friendly, secure, and effective platform.

A. User Engagement

User engagement for the "Find a Perfect Travel Partner" project was a key focus, resulting in positive outcomes. The app's intuitive design and personalized features encouraged users to actively interact with the platform. Features like customizable travel preferences, real-time messaging, and profile verification kept users invested in the matching process. Gamification elements, such as badges for frequent interactions or successful matches, further boosted participation. Regular updates, including travel tips and partner suggestions, maintained user interest over time. Push notifications for new matches or messages ensured consistent app usage. Community-building initiatives, like user forums or travel stories, fostered a sense of connection among users. Feedback loops, where users could share their experiences, helped refine the platform and keep it aligned with their needs. Overall, these strategies led to high user retention rates and active daily engagement, making the app a valuable tool for travellers.

B. User Satisfaction

User satisfaction for the "Find a Perfect Travel Partner" project was a critical measure of its success. Surveys and feedback revealed that users appreciated the app's user-friendly interface, which made navigation simple and enjoyable. The accuracy of the matching algorithm received praise, as it consistently connected users with compatible travel partners. Many users highlighted the convenience of features like real-time messaging, profile customization, and travel preference filters. The app's reliability, even under low connectivity, was another factor

that contributed to positive user experiences. Safety features, such as profile verification and reporting tools, were well-received, making users feel secure while using the platform. Personalized recommendations and regular updates kept users engaged and satisfied. The inclusion of community features, like travel stories and forums, added a social element that users enjoyed. Quick and responsive customer support further enhanced satisfaction by addressing concerns promptly. Users also valued the transparency in how matches were made and the control they had over their data. The app's compatibility across various devices and operating systems ensured a seamless experience for all users. Gamification elements, such as badges and rewards, added a fun and motivating aspect to the platform. Overall, the high retention rates and positive reviews reflected the app's ability to meet and exceed user expectations. The project successfully created a platform that not only connected travellers but also delivered a satisfying and enjoyable experience.

C. Comparative Analysis

A comparative analysis of the "Find a Perfect Travel Partner" project against similar platforms highlights its unique strengths and areas for improvement. Unlike many competitors, this app focuses heavily on personalized matching, using advanced algorithms to ensure compatibility based on travel preferences, interests, and lifestyles. While other platforms rely on generic filters, this app provides tailored suggestions, resulting in higher user satisfaction. The interface is notably more intuitive and user-friendly compared to cluttered designs seen in some rival apps. Safety features, such as profile verification and reporting tools, are more robust, addressing user concerns about security more effectively. However, some competitors offer a wider range of social features, such as group travel options or event planning, which could be integrated to enhance this app's functionality. Performance-wise, this app excels in reliability, functioning smoothly even under low connectivity, unlike some platforms that struggle with technical glitches. The inclusion of gamification elements, like badges and rewards, sets it apart by adding an engaging layer that many competitors lack. Customer support is more responsive and user-centric compared to slower, less efficient services offered by others. While the app's focus on individual travel partnerships is a strength, expanding to include group travel features could attract a broader audience. Overall, the "Find a Perfect Travel Partner" app stands out for its personalized approach, safety measures, and user-friendly design, though incorporating additional social and group features could further elevate its competitiveness in the market.

V. DISCUSSION

The "**Find a Perfect Travel Partner**" project shows its success, challenges, and chances for future growth. The app did a good job of helping travellers find like-minded partners by using a smart matching system and an easy-to-use design. Many users were happy with the app and used it actively, which shows it met their needs well. The app also focused on safety and privacy by using profile verification and protecting user data, which helped build trust and made it stand out from similar apps.

Still, the project faced some challenges, like needing to improve the matching system to avoid bias and give better matches. While the app works well for individual travel partners, adding features for group travel could make it more useful for more people. Fun features like games and community activities helped keep users interested, but there is still room for more creative ideas in this area.

User feedback helped the team see what needs to be better, like adding more social features and improving customer support. The app also works well even with low internet speed, which is a big advantage. However, it will need regular updates to keep this performance strong.

Overall, the project has built a strong base, but it needs to keep improving based on what users want and how the travel market changes. In the future, it could add more smart AI features, reach users in more countries, and create a more interactive travel community. By doing this, the app can become a top platform for helping travellers find good travel companions.

A. Interpretation of Results

The results of the "**Find a Perfect Travel Partner**" project show that the platform has done a good job meeting user needs, while also pointing out areas where it can improve. Many users were happy with the app because the matching system was personalized and the design was easy to use. Users also gave positive feedback about safety features like profile checks and reporting options, showing that trust and security are very important.

Interactive features like games and community activities helped keep users interested and involved. Tests showed that the app works well in different situations, giving users a smooth experience. However, some users suggested improving the matching system to reduce bias and adding features for group travel.

Data on how often people use the app and stay active shows that many users like it and keep using it. But to continue growing, the app needs to keep updating and adding new ideas. Overall, the project has built a strong base, and with some improvements, it can become even better and more competitive.

B. Comparison with Existing Literature

When comparing the **"Find a Perfect Travel Partner"** project with existing research, we can see both similarities and differences. Many studies highlight the importance of personalized matching systems to improve user satisfaction, which matches this project's goal of helping users find the right travel partner. Research also shows that an easy-to-use design helps keep users engaged, which this app has done well with its simple and user-friendly layout.

Safety and privacy are major concerns in many studies, and this project addressed them through profile verification and secure data handling, making it a good example for other platforms. However, some studies suggest that adding social features and group travel options can help keep users more active, which is an area where this app can still grow.

Using gamification, or adding fun elements to the app, was a successful feature in this project and supports what many studies recommend. The app also works well even with low internet connection, which is important for a smooth user experience and matches what other research has pointed out.

While the app is strong in helping individuals find travel partners, studies often talk about the growing need for group travel features, which could be added in the future. Overall, the project follows many best practices found in research and adds some new ideas like its smart matching system and strong safety tools. By improving areas like social interaction and group travel, the app can become even better and more popular in the travel community.

C. Limitations of the Study

The **"Find a Perfect Travel Partner"** project was successful, but it also had some limitations. One major limitation is that the app depends on users to give correct information about themselves, which may not always be accurate. This can affect how well the matching system works. The project mainly focused on finding travel partners for individuals, so it didn't explore how group travel might work.

Another issue is the small number of users involved in the study, which may not reflect the needs and preferences of people from different parts of the world. Even though the matching algorithm is advanced, it might still have some biases because of the information users provide. It needs regular updates to stay fair and accurate.

The project was also tested for only a short time, so it didn't provide much insight into how users stay engaged with the app in the long run. The app's performance in places with very poor internet connection was not tested much, which might affect its use in such areas. Also, the app didn't explore cultural differences in travel choices, which could limit its global use.

The project didn't look deeply at how things like travel bans or economic problems affect how people use the app. Although safety features were added, more testing is needed to make sure they protect users from all types of misuse or bad behavior. Finally, the study mostly focused on numbers and data, and didn't look enough at emotional aspects like how comfortable users feel or how trust is built. Future research can help improve the app by addressing these issues and making it even better for travellers.

D. Future Research Directions

Future research for the **"Find a Perfect Travel Partner"** project should focus on improving the app's features and filling the current gaps. One important step is to add options for **group travel**, so people who want to travel in groups can also benefit. It would also be helpful to explore how **cultural differences** affect travel choices, which can make the app more useful for people from different parts of the world.

Improving the **AI matching system** can help reduce bias and make partner suggestions more accurate. It's also important to conduct **long-term studies** to understand how users continue to use the app over time and what keeps them interested. Testing how well the app works in **areas with poor internet connection** will help make it accessible to more users.

Adding features that consider **emotional and psychological compatibility** can also help users find better travel partners. Finally, studying how factors like **travel restrictions or economic issues** affect user behavior can make the app more flexible and practical in real-world situations. These improvements will not only make the app better but also help it grow and stay relevant in the travel industry.

VI. CONCLUSION

To sum up, the **"Find a Perfect Travel Partner"** project has successfully built a platform that helps connect travellers with similar interests. It uses an advanced matching system, a simple and easy-to-use design, and strong safety features. The app has received **positive feedback** from users, showing that it meets their needs and expectations. It has also been proven to work well in different situations through performance tests. However, there are still some areas that can be improved, such as **reducing bias in the matching system**, adding more **social and group travel options**, and making the app more suitable for **people around the world**.

A. Key Findings

The main results of the **"Find a Perfect Travel Partner"** project show that it successfully created a user-friendly platform to help travellers connect. The **personalized matching system** worked well in pairing people with similar interests, leading to **high user satisfaction**. Safety tools like **profile verification** and **reporting options** helped build trust and made users feel secure. The app's **easy-to-use design** and smooth performance, even with **low internet connectivity**, made the overall experience better. Features like **games and community interaction** also helped keep users interested and coming back. However, user feedback showed that there is room to **improve the algorithm** and **add group travel features**. In short, the project proved that combining smart technology with a focus on user needs can create a strong and useful travel app.

B. Contributions to the Field

The **"Find a Perfect Travel Partner"** project has made valuable progress in travel technology and helping people connect. It created a **personalized matching system** that helps travellers find partners with similar interests and preferences. The project also added important **safety features** like **profile checks and reporting tools**, setting a new example for keeping users safe on travel platforms. Its **easy-to-use design** and ability to work well even with **low internet connection** made it more accessible for everyone. The use of **games and community features** helped increase user interest and made people stay active on the app. The project also focused on **important ethical values**, such as keeping user data private and reducing bias, adding to discussions about responsible use of technology. In conclusion, this project not only solved a real problem for travellers but also gave useful ideas and standards for future travel apps.

C. Implications for Future Education

The **"Find a Perfect Travel Partner"** project offers useful lessons for future education, especially in areas like **technology, design, and user experience**. It shows how important it is to teach students to create **user-friendly solutions** that focus on **safety, inclusion, and ethics**. The project also highlights the need to teach **real-world problem-solving**, like building smart algorithms that reduce bias and improve personalization. It encourages students to follow an **iterative design process**, where user feedback helps make continuous improvements. The project also shows the benefit of **interdisciplinary learning**, where technical knowledge is combined with ideas from **psychology, sociology, and ethics** to build better solutions. Teachers can use this project as an example to inspire students to think creatively and **develop responsible and meaningful technologies**. Overall, it promotes a **well-rounded learning approach** that prepares students to create tools that are both effective and socially responsible.

D. Future Research

Future research for the **"Find a Perfect Travel Partner"** project should focus on improving the app and solving current challenges. One important step is to add **group travel options** for users who want to travel with more people. Studying **how culture affects travel choices** can also help make the app more useful for users around the world. Creating **smarter AI-based algorithms** can reduce bias and make matches more accurate. **Long-term research** is needed to understand how well users stay engaged with the app over time. Testing the app in areas with **poor internet connection** can help make sure it's accessible to more people. Adding **emotional and psychological aspects** into the matching process may improve user satisfaction. Also, understanding how **outside factors like travel bans or financial issues** affect users can make the app better prepared for real-life challenges. These research ideas can help the app grow stronger and stay useful in the changing travel industry..

REFERENCES

- [1] Harika, G., Lohiya, P., Gugale, A., Kuppam, S., & Swarnalatha, P. (2018). Travel Buddy—A Carpooling App: A System Designed to Group Students for Sharing a Cab. *Journal of Computational and Theoretical Nanoscience*, 15(8), 2630-2634.
- [2] Roy, S. K., Kuri, B. C., Ananya, S. A., & Hassan, A. (2021). Social Media Platforms in Tourism: Advantages and Potential Challenges in Bangladesh. *Technology Application in the Tourism and Hospitality Industry of Bangladesh*, 259-279.
- [3] Jensen, J. L. (2008). Virtual Tourist: knowledge communication in an online travel community. *International Journal of Web Based Communities*, 4(4), 503-522.
- [4] Xu, Z. (2022). OnTheGo: designing a trustworthy and inclusive digital platform for strangers to travel together
- [5] Sanders Thompson, V. L., Ackermann, N., Bauer, K. L., Bowen, D. J., & Goodman, M. S. (2021). Strategies of community engagement in research: definitions and classifications. *Translational behavioral medicine*, 11(2), 441-451
- [6] Sun, Y., Zhang, J., Xiong, Y., & Zhu, G. (2014). Data security and privacy in cloud computing. *International Journal of Distributed Sensor Networks*, 10(7), 190903.
- [7] Wang, Y., Zhang, T. T., Li, H. Z., He, L. P., & Peng, J. (2012, June). Efficient privacy preserving matchmaking for mobile social networking against malicious users. In *2012 IEEE 11th International Conference on Trust, Security and Privacy in Computing and Communications* (pp. 609-615). IEEE.
- [8] Molz, J. G. (2012). *Travel connections: Tourism, technology and togetherness in a mobile world*. Routledge.
- [9] Duus, R., & Cooray, M. (2014). Together we innovate: Cross-cultural teamwork through virtual platforms. *Journal of Marketing Education*, 36(3), 244-257.
- [10] Zhu, J., Eisenstadt, M., Goncalves, A., & Denham, C. (2005). Buddyfinder-corder: Leveraging social networks for matchmaking by opportunistic discovery. *ISWC2005, Galway Ireland*, 1-101.



INTERNATIONAL
STANDARD
SERIAL
NUMBER
INDIA



INTERNATIONAL JOURNAL OF INNOVATIVE RESEARCH

IN SCIENCE | ENGINEERING | TECHNOLOGY

 9940 572 462  6381 907 438  ijirset@gmail.com



www.ijirset.com

Scan to save the contact details