



International Journal of Innovative Research in Science Engineering and Technology (IJIRSET)

(A Monthly, Peer Reviewed, Refereed, Scholarly Indexed, Open Access Journal)



Impact Factor: 8.699

Volume 14, Issue 3, March 2025

CityCare Hub: Smart Waste Management & Civic Services

**Prajapati Saurav, Prajapati Aditya, Gamit Swapnil, Parmar Gautam, Makwana Mihir,
Maheshwari H Sagar**

U.G. Students, Department of Computer Science & Engineering, Parul University, Vadodara, Gujarat, India

Assistant Professor, Department of Computer Science & Engineering, Parul University, Vadodara, Gujarat, India

ABSTRACT: The "CityCare Hub" is a transformative smart city platform designed to enhance municipal service management and citizen engagement through advanced technology. It integrates multiple urban management functions into a centralized system that promotes transparency, efficiency, and accessibility for both municipal authorities and residents. This paper discusses the CityCare Hub's capabilities, which include real-time complaint reporting, a streamlined online tax payment system, an interactive city information portal, and a public chat forum for civic discussions. These features foster improved urban governance and create a collaborative environment between city administrators and citizens. The platform employs secure authentication and encryption mechanisms to ensure data privacy, while its integration with mobile devices allows users to access services conveniently from anywhere. A robust backend architecture supports real-time data management, complaint tracking, and automated notifications, ensuring prompt service delivery. Additionally, advanced data analytics enable municipal authorities to make informed decisions and optimize urban resource allocation. Through a literature review and case study analysis, this paper highlights the necessity of smart city solutions in modern urban management. Findings indicate that CityCare Hub significantly improves service efficiency, reduces response times, and enhances citizen satisfaction. The CityCare Hub represents a scalable and innovative solution that aligns with the vision of smart urban governance, setting a new benchmark for municipal service digitalization and civic engagement.

KEYWORDS: Smart city, urban governance, municipal services, waste management, digital governance, civic engagement, smart waste management, online tax payment, public complaint system, citizen participation

I. INTRODUCTION

The CityCare Hub is an advanced digital platform designed to enhance municipal services, improve citizen engagement, and streamline urban management. By integrating various functionalities into a single user-friendly system, it aims to create an efficient, transparent, and responsive city governance framework. With technology playing an increasingly vital role in modern urban development, CityCare Hub provides municipalities and residents with essential tools to foster a more connected and well-managed city.

One of the core features of CityCare Hub is its complaint reporting system, which allows residents to report civic issues such as broken streetlights, potholes, uncollected waste, and illegal parking. The system provides real-time tracking, enabling users to monitor the progress of their complaints and ensuring accountability from municipal authorities. This transparency fosters trust between citizens and city administrators while improving service response times. The online tax payment system is another key component of the platform, simplifying the process of paying property taxes, utility bills, and other municipal fees. The system reduces the need for physical visits to government offices, thereby minimizing paperwork, preventing fraud, and ensuring secure transactions. Automated notifications remind users of due dates, helping prevent missed payments and late fees. CityCare Hub also functions as a comprehensive city information portal, where citizens can access news, local events, zoning laws, and transportation updates. A dedicated public chat forum fosters discussions among residents about community concerns, allowing them to share feedback, suggest improvements, and collaborate with local authorities. This feature strengthens community engagement and encourages collective problem-solving.

Furthermore, CityCare Hub includes a service marketplace, where residents can hire local workers for services like

house cleaning, repairs, and maintenance. This feature not only enhances convenience for citizens but also supports local employment and economic growth by connecting job seekers with potential employers.

For new residents and visitors, the platform includes a city guide feature that helps users explore the best places to visit, dine, and experience local culture. Whether it's popular restaurants, tourist attractions, or hidden gems within the city, the platform provides curated recommendations, making it easier for newcomers to navigate and enjoy their surroundings.

II. RELATED WORK

The digital transformation of municipal services has been a key focus of smart city initiatives worldwide. With urban populations growing and technology advancing, governments are adopting e-governance solutions to enhance public service efficiency, transparency, and citizen engagement. Several studies have explored the integration of complaint management, tax collection, public engagement, and smart infrastructure monitoring in municipal platforms. The following section presents a review of prior research in these areas and highlights how the CityCare Hub builds upon them.

2.1 Municipal Complaint Management Systems

Several research studies have examined the effectiveness of digital complaint management systems in urban governance. Traditional complaint-handling mechanisms often suffer from delayed responses, lack of citizen feedback, and manual inefficiencies. Studies indicate that systems with real-time tracking and direct municipal oversight significantly enhance citizen trust and satisfaction. CityCare Hub improves upon these models by integrating automated tracking, complaint resolution monitoring, and citizen feedback loops, ensuring a transparent and accountable complaint-handling mechanism.

2.2 Online Tax Payment and Municipal Revenue Management

The adoption of online tax payment systems has streamlined municipal revenue collection, reducing tax evasion and increasing compliance rates. However, studies indicate that many existing platforms lack automation, multi-payment options, and predictive revenue analysis. Dynamic pricing models used in commercial e-commerce have inspired municipal governments to explore flexible tax policies based on real-time economic conditions. CityCare Hub addresses these gaps by integrating a secure, automated, and multi-option online tax payment system, ensuring efficient collection, fraud prevention, and automated reminders for tax compliance.

2.3 Smart City Data Analytics and AI Integration

The role of data-driven decision-making in smart cities has been widely researched. CityCare Hub integrates AI-based analysis to help city officials detect problem areas, predict service demands, and allocate resources efficiently, making city management proactive rather than reactive.

2.4 City Exploration and Tourism Assistance

Several research studies focus on digital city guides that help new residents and tourists navigate urban spaces. While Google Maps and TripAdvisor provide general location-based recommendations, they lack direct municipal integration. CityCare Hub integrates a city exploration feature, allowing visitors to find the best places to eat, explore attractions, and access local services on the same platform.

III. PROPOSED SYSTEM

System Overview:

1. Purpose & Objectives

The CityCare Hub is a smart municipal management system designed to streamline city services, enhance citizen engagement, and improve governance efficiency. The platform serves as a bridge between municipal authorities and residents, ensuring transparent and responsive city administration. Citizens can report complaints, pay taxes, access city updates, and participate in discussions, while municipal authorities can track complaints, manage tax payments, and communicate with residents effectively.

Key Objectives:

- **Efficient Complaint Management** – Enable citizens to lodge complaints regarding garbage collection, road maintenance, streetlights, and other civic issues while allowing municipal officers to track, update, and resolve complaints in real-time.
- **Integrated Online Tax Payment** – Provide a secure and seamless tax payment system, allowing users to pay property taxes, utility bills, and municipal fees online while generating digital receipts for easy record-keeping.
- **Municipal Dashboard & Service Management** – Equip city administrators with a centralized dashboard where they can monitor tax payments, manage complaints, update city announcements, and analyze service performance.

2. Target Users

The CityCare Hub serves two primary user groups: Municipal Administrators and Citizens. Each group has distinct roles and functionalities within the system to ensure efficient city management and seamless citizen interaction.

Municipal Administrator

- The Municipal Corporation oversees city operations, manages complaints, processes tax payments, and ensures smooth governance. The administrator has access to:
- **Complaint Management** – View all registered complaints, categorize them, assign them to the relevant department, and update their status (e.g., Pending, In Progress, Resolved).
- **Tax & Payment Tracking** – Monitor all municipal payments, generate revenue reports, and ensure timely bill settlements.
- **City Information & News Updates** – Publish news, announcements, event notifications, and emergency alerts to keep citizens informed.
- **User & Data Management** – Maintain citizen profiles, service usage records, and payment histories while ensuring data security and compliance.

Citizen (End User)

- Citizens use the CityCare Hub to interact with municipal services, report issues, and stay informed about city affairs. Citizens can:
- **Register & Log In** – Create an account to access complaint tracking, tax payments, and city updates securely.
- **Submit & Track Complaints** – Report civic issues with photos and descriptions, view complaint status updates, and receive resolution notifications.
- **Pay Taxes & Bills** – Use secure payment gateways to pay property taxes, water bills, and other municipal fees, with automated reminders for due dates.
- **Access City News & Alerts** – Stay updated on city policies, infrastructure projects, and local events through the integrated news portal.
- **Explore City Services & Recommendations** – New residents and visitors can find recommended places to visit, restaurants, and essential services curated by municipal authorities.

3. System Architecture:

Component	Interaction with Application Server	Relationship Type	Data Exchanged
Sign-Up Page	Sends user registration data	Data Flow	Name, email, password, address, phone number
Login Page	Sends login credentials	Data Flow	Email, password
Home Page	Requests city services data	Data Flow	News updates, announcements, tax notices, service alerts
Complaint Submission Page	Sends complaint details to municipal authorities	Data Flow	User ID, complaint description, images, location

Complaint Tracking Page	Requests complaint status updates	Data Flow	Complaint ID, current status (Pending, In Progress, Resolved)
Tax Payment Page	Sends tax payment details	Data Flow	User ID, tax type, amount, payment status
City Information Page	Requests city-related data	Data Flow	Events, government policies, service announcements
City Exploration Page	Requests location-based recommendations	Data Flow	Nearby places, restaurants, tourist spots
Admin Dashboard	Sends complaint, tax, and user management requests	Data Flow	Complaint details, user payments, tax records

4. Functional Description:

User Interface (Admin Interface)

The admin interface of CityCare Hub is designed to provide municipal administrators with an intuitive and efficient platform for managing complaints, tax payments, public interactions, and city services. The interface includes the following key functionalities:

- Dashboard

- Provides an overview of total complaints, resolved issues, pending tax payments, and citizen interactions.
- Includes quick access buttons for complaint tracking, tax payment monitoring, and city announcements.

- Complaint Management

- View Complaints:** Displays all user-submitted complaints along with status updates (Pending, In Progress, Resolved).
- Assign & Update Status:** Allows administrators to assign complaints to the relevant department and update their progress.
- Complaint Resolution Tracking:** Keeps a record of actions taken and completion status for each complaint.

- Tax Payment Management

- View Tax Payments:** Displays all citizen payments, pending dues, and transaction details.
- Update Payment Status:** Ensures proper tracking of tax and utility bill payments.
- Generate Reports:** Allows administrators to analyze revenue trends and payment statistics for better financial planning.

- City Information Management

- Publish News & Announcements:** Enables municipal officials to share city-related updates, emergency alerts, and policy changes.

- User & Account Management

- View Registered Users:** Displays a list of citizens using the platform along with their contact details and activity history.

User Interface (Citizen/End User Side)

The citizen interface is designed to provide easy access to municipal services, complaint reporting, and city information. It includes the following key functionalities:

- User Authentication

- Sign-Up Page:** New users can register by entering their name, email, password, and contact details.
- Login Page:** Registered users can log in with email and password to access their account.

• Home Page

- a) Displays important city announcements, upcoming events, and quick access to complaints and tax payments.
- b) Features a search bar to help users find services, complaints, and municipal contacts easily.

• Complaint Reporting & Tracking

- a) Submit Complaints: Users can report city issues (garbage collection, potholes, streetlight failures) by entering details and uploading images.
- b) Track Complaint Status: Citizens can monitor real-time updates on complaint resolution progress.

• Tax Payment & Billing

- a) View & Pay Taxes: Users can securely pay property tax, utility bills, and other municipal charges via the integrated payment gateway.
- b) Payment History: Keeps a record of past transactions and receipts for easy reference.

5. Data Management:

The CityCare Hub system utilizes MongoDB Atlas, a cloud-hosted NoSQL database to store, retrieve, and manage municipal service data. The database is structured into different collections, ensuring efficient handling of user data, complaints, payments, and city updates.

Collections in MongoDB Atlas**I. Users Collection**

- Stores citizen authentication data and personal details.
- Fields include user_id (unique identifier), name, email, password (hashed), phone number, address, and interaction history.
- The email field serves as the unique identifier for users.

II. Complaints Collection

- Maintains records of citizen-submitted complaints.
- Fields include complaint_id, user_id (references Users Collection), issue description, location, images, timestamp, and status (Pending, In Progress, Resolved).
- Enables tracking of complaint resolution progress.

III. Tax Payments Collection

- Stores records of tax and bill payments made by citizens.
- Fields include payment_id, user_id (references Users Collection), amount, payment method, status (Paid, Pending), and timestamp.
- Ensures seamless tracking of pending and completed payments.

IV. Admin Collection

- Stores municipal officer credentials for platform management.
- Fields include admin_id, name, email, password (hashed), and role.

Data Security Measures**I. Access Control**

- Role-based access control (RBAC) ensures that only authorized municipal officials can modify city records, process payments, or resolve complaints.

II. Data Encryption

- Data at rest and in transit is encrypted using TLS/SSL protocols.
- Passwords are securely hashed to prevent unauthorized access.

6. Implementation Details

The CityCare Hub is built using modern web technologies to ensure a fast, secure, and scalable municipal service platform.

I. Frontend

- Languages: HTML, CSS, JavaScript
- Framework/Library: React.js
- Styling: Tailwind CSS

II. Backend

- Languages: JavaScript
- Framework: Node.js with Express.js
- Database: MongoDB Atlas

III. Cloud Services & APIs

- Cloud Storage: AWS S3 (for storing user-uploaded complaint images and documents)
- Payment Gateway: Razorpay or PayU (for secure online municipal tax payments)
- Map Integration: Google Maps API (for location-based complaint tracking and city service navigation)

7. Development Process:

The CityCare Hub was developed using the Waterfall model, ensuring a structured and sequential approach to system development. The process began with requirement analysis, where essential functionalities such as user authentication, complaint management, online tax payments, city information portal, discussion forums, and Google Maps integration were identified. Based on these requirements, the technology stack was selected, including React.js for the frontend, Node.js with Express.js for the backend, MongoDB Atlas for the database, Razorpay for payment integration, and Google Maps API for location-based services.

During the system design phase, the system architecture, database schema, and UI/UX wireframes were created to define how different components interact. The implementation phase involved developing the frontend using React.js and Tailwind CSS, while the backend was built using Node.js with Express.js to handle API requests, user authentication, complaint tracking, and tax payments. Google Maps API was integrated to enable location-based complaint submissions and city navigation, and AWS S3 was used for storing user-uploaded images.

To ensure a seamless and error-free experience, comprehensive testing was conducted throughout development. Unit testing (Mocha, Chai), integration testing, and UI automation testing (Selenium) were performed to validate the platform's functionality and security. Regular performance evaluations and security updates were scheduled to maintain the system's efficiency.

IV.SYSTEM DIAGRAM

- DFD Diagram:

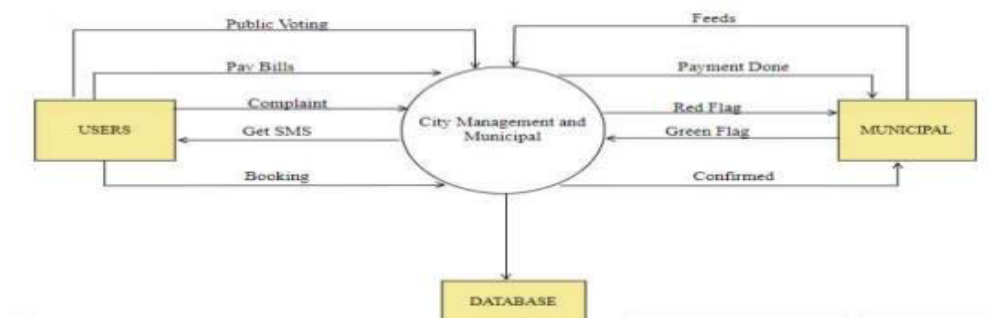
1. The Level 0 Data Flow Diagram (DFD), also known as the Context Diagram, provides a high-level overview of the CityCare Hub system. It illustrates the interaction between external entities (Citizens and Municipal Administrators) and the system, showcasing how data flows in and out of the platform

DFD LEVEL 0



- The Level 1 Data Flow Diagram (DFD) expands upon the Context Diagram (Level 0) by breaking down the CityCare Hub into its main sub-processes. Instead of a single system, it illustrates how different functionalities interact with the database and external entities.

DFD LEVEL 1



V. RESULT

This section introduces the most important pages of the CityCare Hub and demonstrates its interface and features.

- Complaint Submission Page

Figure 1 illustrates the Complaint Submission Page, where citizens can report issues related to municipal services, such as garbage collection, potholes, broken streetlights, and illegal parking. Users can enter a description of the complaint, upload images, and pin the exact location using the integrated Google Maps API.

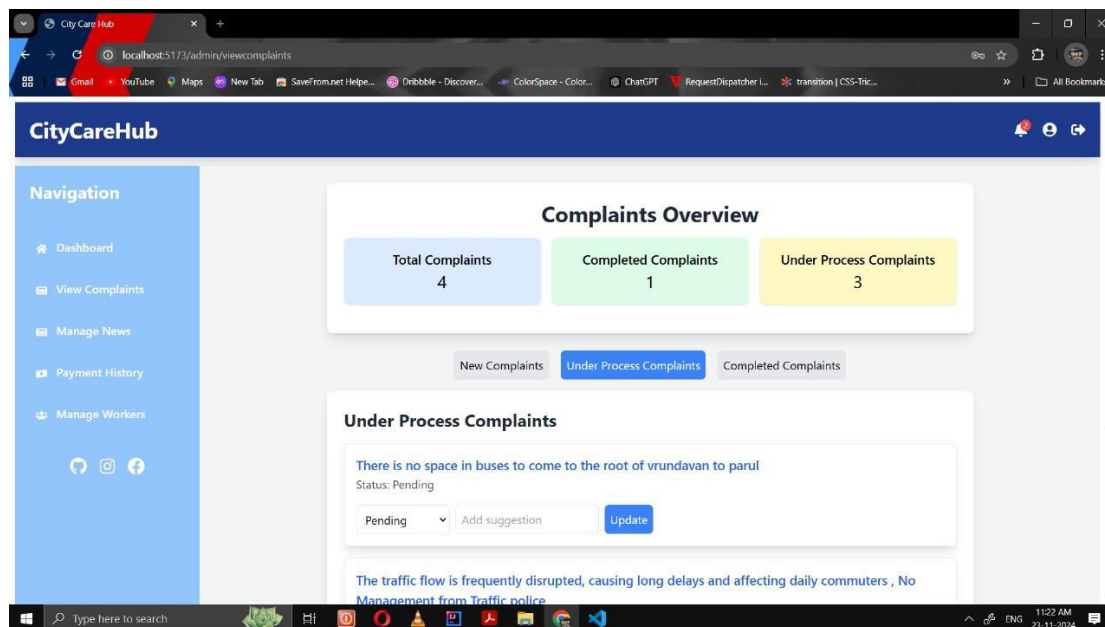


Figure-1: Complaint Submission Page

- Admin Dashboard

Figure 2 displays the Admin Dashboard, accessible only to authorized municipal officials. The dashboard provides an overview of pending and resolved complaints, tax payments, and discussion forum activities.

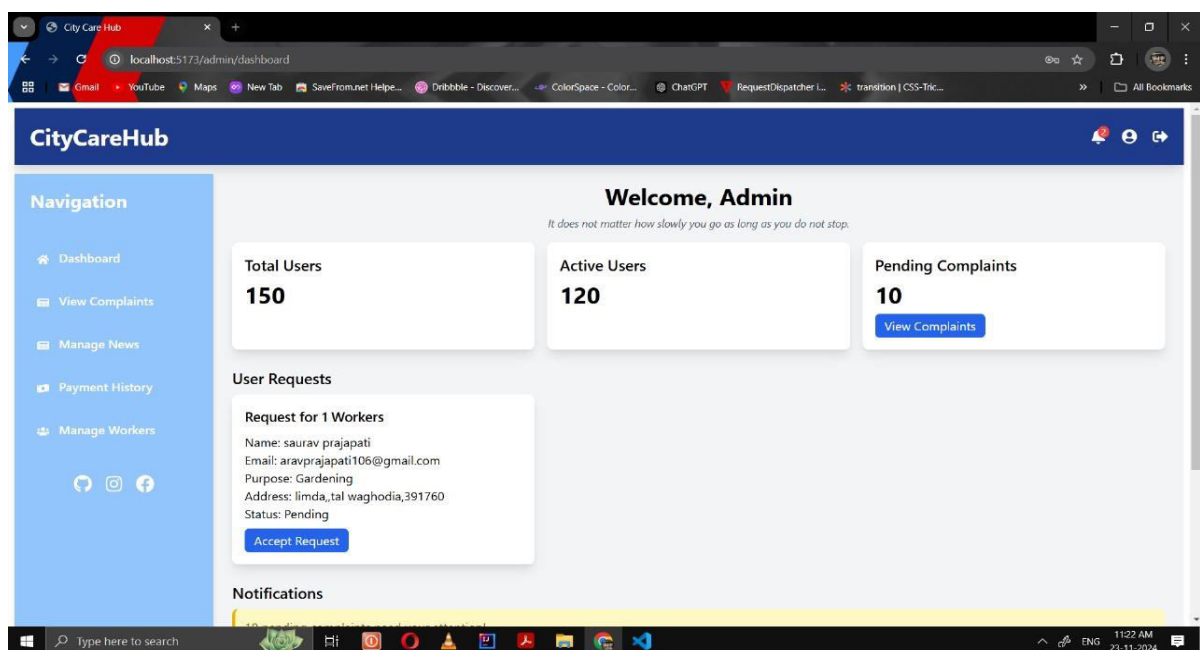


Figure-2: Admin Dashboard

- Map Navigation & Place Finder Page

Figure 3 illustrates the Map Navigation & Place Finder Page, which utilizes the Google Maps API to help citizens explore essential city services, tourist attractions, restaurants, and government offices. This feature allows new residents and visitors to find key locations efficiently while also enabling location-based complaint reporting.

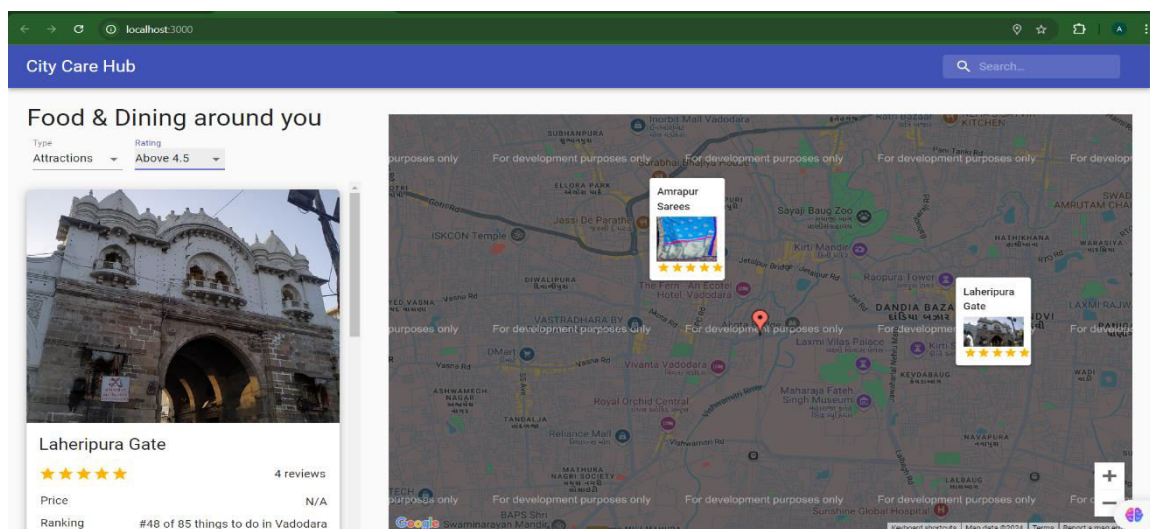


Figure -3: Map Navigation & Place Finder Page

VI. CONCLUSION

The CityCare Hub has successfully established an efficient and user-friendly platform for both municipal administrators and citizens, ensuring seamless city service management. The system allows authorities to track complaints, process tax payments, and manage city updates, while citizens benefit from an intuitive interface for reporting issues, making payments, and accessing municipal services.

One of the key achievements of this project is the integration of MongoDB Atlas for scalable cloud database management, along with React.js for a dynamic frontend and Node.js with Express.js for efficient backend operations. The incorporation of Google Maps API enhances location-based complaint tracking and city navigation, while Razorpay ensures secure online tax transactions.

From a development perspective, the project follows a structured and scalable architecture, enabling future enhancements like AI-based complaint prioritization, predictive analytics for city planning, and expanded public engagement tools.

REFERENCES

- [1] R. Joshi and S. Ahmed, "Status and challenges of municipal solid waste management in india: Areview," Cogent environmental science, vol. 2, no. 1, p. 1139434, 2016.
<https://www.tandfonline.com/doi/full/10.1080/23311843.2016.1139434>
- [2] N. Gupta, K. K. Yadav, and V. Kumar, "A review on current status of municipal solid waste management in india," Journal of environmental sciences, vol. 37, pp. 206–217, 2015.
<https://doi.org/10.1016/j.jes.2015.01.034>
- [3] A. B. Haque, B. Bhushan, and G. Dhiman, "Conceptualizing smart city applications: Requirements, architecture, security issues, and emerging trends," Expert Systems, vol. 39, no. 5, p. e12753, 2022.
<https://onlinelibrary.wiley.com/doi/abs/10.1111/exsy.12753>
- [4] W. Xia, Y. Jiang, X. Chen, and R. Zhao, "Application of machine learning algorithms in municipal solid waste

management: A mini review,” Waste Management & Research, vol. 40, no. 6, pp. 609–624, 2022.

<https://journals.sagepub.com/doi/full/10.1177/0734242X211033716>

[5] M. Angelidou, A. Psaltoglou, N. Komninos, C. Kakderi, P. Tsarchopoulos, and A. Panori, “Enhancing sustainable urban development through smart city applications,” Journal of science and technology policy management, vol. 9, no. 2, pp. 146–169, 2018.

<https://www.emerald.com/insight/content/doi/10.1108/jstpm-05-2017-0016/full/html>

[6] Q. Lu, “Smartphone applications in government: Characterizing and evaluating municipal smartphone applications for service requests,” Master’s thesis, University of Waterloo, 2017. Available: <https://uwspace.uwaterloo.ca/items/177a078a-8aea-4da1-9742-5c49c394b022>



INTERNATIONAL
STANDARD
SERIAL
NUMBER
INDIA



INTERNATIONAL JOURNAL OF INNOVATIVE RESEARCH

IN SCIENCE | ENGINEERING | TECHNOLOGY

 9940 572 462  6381 907 438  ijirset@gmail.com



www.ijirset.com

Scan to save the contact details