



International Journal of Innovative Research in Science Engineering and Technology (IJIRSET)

(A Monthly, Peer Reviewed, Refereed, Scholarly Indexed, Open Access Journal)



Impact Factor: 8.699

Volume 14, Issue 5, May 2025

Medicine Recommendation System using Machine Learning

Dr. Manjula H Nebagiri

Associate Professor, Dept. of CSE, SIET, Tumkur, Karnataka, India

Laxmi Sonnad, D P Harshitha, Ananya M J, Aishwarya S

U.G. Student, Dept. of CSE, SIET, Tumkur, Karnataka, India

ABSTRACT: Intelligent systems that support medical decision-making have been developed in response to the increasing demand for individualized healthcare solutions. The goal of this project is to develop a medication recommendation system that makes use of machine learning methods to suggest appropriate medications in response to user inputs, such as symptoms or medical conditions. The method trains a machine learning model that can precisely anticipate medication recommendations by using a well-structured medical dataset. The technology determines possible diagnoses and makes medication recommendations by evaluating user-provided symptoms, guaranteeing better healthcare support and accessibility. The system's backend incorporates a powerful Python-based framework, such as Flask or Django, to handle user inputs and communicate with the machine learning model, while the frontend uses HTML, CSS, and jQuery to provide an interactive and user-friendly interface.

KEYWORDS: Medicine Recommendation System, Machine Learning, Personalized Medicine, Disease Classification, Symptoms Analysis

I. INTRODUCTION

The Machine Learning-Based Medicine Recommendation System is a ground-breaking method designed to enhance healthcare delivery by providing precise and individualized medicine recommendations. With the speed at which technology is developing, machine learning has the potential to revolutionize a number of sectors, including healthcare. Given the large number of medications available and the variety of patient conditions, choosing the best treatment for a patient can be a challenging task in the medical field. Conventional approaches frequently depend on medical criteria and a doctor's experience, which, although useful, might not always take into consideration the wide range of individual variability observed in patients. By taking into account a number of variables, including symptoms, medical history, age, gender, allergies, and other individualized information, this system uses machine learning techniques to improve and automate the medication recommendation process. [1]The system can recommend appropriate treatments that fit the patient's particular profile by evaluating patient data and comparing it with a database of recognized illnesses and drugs. This improves the likelihood of successful treatment and reduces potential negative effects. Furthermore, the system can operate effectively even when given ambiguous or partial inputs because it can handle both structured and unstructured data, such as textual descriptions and symptoms.

II. LITREATURE SURVEY

Survey of Literature Medication Recommendation and Disease Prediction: A number of studies concentrate on using patient symptoms and past medical data to anticipate diseases and make medication recommendations. For example, G. S. V. S. S. and B. R. S. Prathap (2018) suggested a system utilizing a decision tree-based algorithm to forecast illnesses and suggest therapies based on patient information such as gender, age, and symptoms. Their model classified common ailments and recommended treatments with a high degree of accuracy. Similarly, Abraham et al. (2020) shown encouraging outcomes in improving prescription accuracy with their hybrid approach that combines decision trees with support vector machines (SVMs) for disease prediction and medication recommendation.

Collaborative and Content-Based Filtering: In several research, collaborative filtering approaches have been employed to recommend drugs based on the profiles of patients who are similar. Bharathi et al. (2019), for instance,

used collaborative filtering to forecast medications based on common symptoms among comparable users, creating a recommendation system that becomes better with user input. On the other hand, content-based filtering makes recommendations based on patient information and symptoms. In order to forecast the best medication for a patient, Patil and Rane (2018) integrated content-based and collaborative filtering, taking into account both patient-specific data and treatment outcomes from other patients who were similar to the patient.

Natural Language Processing (NLP) in Medicine: Conventional machine learning (ML) models face difficulties since a large portion of medical data are unstructured text. The incorporation of NLP for processing such data has been investigated in a number of research. Tokenization and named entity recognition (NER) are two NLP approaches that G. S. Goyal et al. (2020) showed how to employ to extract useful information from Using unstructured medical language, patients can receive better recommendations based on written descriptions of their symptoms. The study demonstrated how NLP could improve a recommendation system's effectiveness by better comprehending the context and subtleties in medical reports through the use of techniques like TF-IDF and Word2Vec.

III. MATERIAL AND METHODS

The Support Vector Classification (SVC) algorithm is used by the Medicine Recommendation System, which processes patient data in an organized manner to suggest suitable therapies. The first step in the system is gathering patient data. comprising demographic information, lab results, symptoms, medical history, and a thorough pharmaceutical database with names, classes, dosages, adverse effects, and contraindications. In order to assure compliance with the SVC algorithm, preprocessing is done after data collection. This includes resolving missing values, encoding categorical data using methods like one-hot encoding, and normalizing numerical characteristics. The ideal hyperplane that divides several classes (diseases) in a high-dimensional feature space is then found using the SVC algorithm to classify diseases based on the input data.

The most important variables for disease prediction are found through feature selection, and model performance is improved by fine-tuning hyperparameters like C (regularization) and gamma (kernel coefficient) using techniques like grid search. To K-fold cross-validation is used to separate the data into training and validation sets in order to evaluate the model's generalizability and guarantee a robust evaluation. After predicting the disease, the system uses patient information and past treatment records to suggest appropriate drugs, incorporating a rule-based methodology to verify dosages and contraindications. Using information from a confusion matrix, the model's performance is assessed using measures such as accuracy, precision, recall, and F1-score. Python libraries such as Scikit-learn, Pandas, and NumPy are used to implement the backend system, and HTML, CSS, and jQuery are used to create the frontend, which guarantees a responsive, interactive, and user-friendly interface that makes it simple for patients and healthcare professionals to enter data and receive prescription recommendations. The purpose of this system is to improve assisting with healthcare decision-making by offering individualized, secure, and efficient drug recommendations.

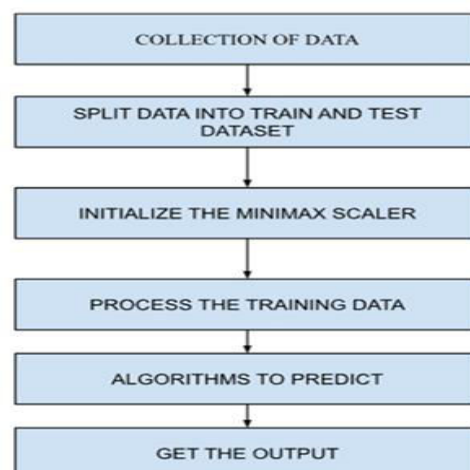


Fig 1:-Block Diagram

The Medicine Recommendation System's block diagram shows how input data is processed and used to create prescription recommendations, giving a visual depiction of the system's flow and essential elements. Data entry is the first step in the process, where the user (a patient or healthcare professional) enters important details including symptoms, medical history, the user interface with the user's age, gender, and any lab results. This information is sent to the preprocessing module, which takes care of data cleaning (deleting inaccurate or missing values), converting categorical variables (such as illnesses and symptoms) into numerical values using techniques like one-hot encoding, and standardizing numerical data (such as lab results or age) to guarantee consistency.

A collection of labeled patient records is used to train the SVC model using historical data, and it is then adjusted for best results. Following the prediction of the condition, the system moves on to the medication prescription module, which employs a rule-based engine to choose suitable drugs based on the patient's profile, the expected disease, and any contraindications. interactions between medications. The method recommends the safest solutions while taking into account the past efficacy of medications for comparable diseases. Following the recommendation, the user interface of the system shows the suggested drug, dosage, and possible adverse effects. The system's performance is lastly evaluated by the evaluation module, which tests the SVC model using metrics like accuracy, precision, recall, and F1-score. A confusion matrix is used to help illustrate any misclassifications. The frontend is constructed using HTML, CSS, and jQuery throughout the process, enabling smooth user-system interaction and dynamic content updates. The Python-implemented backend controls the logic for classifying diseases and prescribing drugs. recommendation, incorporating a number of libraries, including NumPy for numerical operations, Pandas for data manipulation, and Scikit-learn for machine learning.

IV. PROPOSED SYSTEM

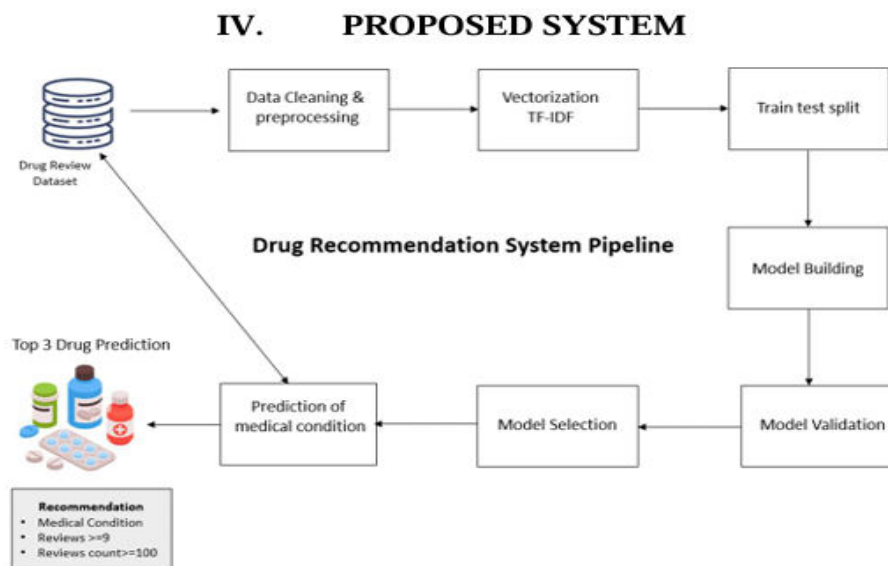


Fig. 2: Medicine Recommendation System Pipeline

By offering precise, individualized, and secure medicine recommendations based on patient data, the proposed Medicine Recommendation System seeks to transform healthcare decision-making. The system makes use of the Support Vector Classification (SVC) algorithm, which categorizes illnesses by examining input data such demographics, lab findings, medical histories, and symptoms. details. The first step in the system's workflow is gathering patient data using an intuitive frontend created with HTML, CSS, and jQuery, where users enter symptoms and other pertinent information. In order to prepare it for analysis, this data is then preprocessed to manage missing values, standardize numerical data, and encode categorical attributes. The SVC algorithm, which is the foundation of the system, is trained on historical data and refined through the use of strategies like grid search to increase precision and efficiency. Using the patient's profile, medical history, and any contraindications or drug interactions, the

medication recommendation module recommends the best medications based on the disease prediction module's classification of the patient's condition using the trained model. A rule-based framework is used to further improve the advice. takes into account each medication's effectiveness and safety. The recommended drug and dosage are then shown to the user via the frontend interface, making sure the user can navigate and comprehend the advice with ease. [3] To guarantee the system's dependability in practical applications, its performance is assessed using a number of measures, including accuracy, precision, recall, and F1-score. The proposed system, which combines a rule-based engine and machine learning, promises to improve healthcare efficiency by helping patients and healthcare professionals make educated medication decisions. This will lower the risk of adverse medication reactions and improve patient outcomes overall.

Table No. 1 Dataset Description

Sr. No.	Field Name	Example Data
1	Training	Monitor blood pressure regularly.
2	Symptoms-severity	Mild, Severe
3	Diets	High-fiber diet, Avoid fatty foods
4	Workout	Yoga, Walking 30 mins/day
5	Description	Headache is a common symptom of stress.
6	Medications	Paracetamol, Ibuprofen
7	Precautions	Stay hydrated, Avoid cold drinks
8	Symptoms df	Fever, Cough, Fatigue

In order to guarantee accurate recommendations and continuous data flow, the Medicine Recommendation System's frontend, backend, and machine learning modules must be seamlessly combined into a single system. The frontend, which is the user interface and is created with HTML, CSS, and jQuery, is where the integration process starts. This makes it easy for patients or medical professionals to enter pertinent information, including symptoms, age, medical history, and test results. Following collection, the data is routed to the backend for preprocessing, which includes handling missing data, categorizing encoding, and normalizing numerical features. The Support Vector Classification (SVC) model receives the preprocessed data and uses past training data to classify the disease. The medication recommendation module receives the categorization findings and utilizes a rule-based engine to offer the best medications based on the patient's characteristics, the projected disease, and safety checks (such drug interactions or contraindications). These Suggestions, dose, and any adverse effects are transmitted back to the frontend for the user to see. Python frameworks like Flask or Django, which serve as a bridge to link the frontend and backend, make it easier to integrate these elements. For data processing, model training, and prediction, the backend additionally incorporates machine learning libraries such as Scikit-learn, Pandas, and NumPy. In order to guarantee the model's dependability and efficacy, the assessment module also assesses the system's performance using measures including accuracy, precision, recall, and F1-score. This complete Integration guarantees that information moves seamlessly from user input to drug recommendations and condition classification, creating a unified and effective system for healthcare decision-making.

V. OBJECTIVES

- **Disease Classification and Prediction:** Use the Support Vector Classification (SVC) method to accurately categorize diseases based on patient symptoms, medical history, and demographic information in order to increase the accuracy of diagnoses.
- **Personalized Medication Recommendations:** Make personalized drug recommendations based on patient characteristics, disease forecasts, and past efficacy statistics, guaranteeing that suggestions are secure and pertinent.
- **Medicine and safety Checks for Interactions:** To improve patient safety and reduce the possibility of adverse responses, incorporate a rule-based engine to look for contraindications, possible drug interactions, and dose recommendations.
- **User-Friendly Interface:** Develop an intuitive and responsive frontend using HTML, CSS, and jQuery to enable easy data input and facilitate smooth interaction with the recommendation system.
- **Real-Time Decision Support:** Develop a system that helps medical practitioners by offering prompt and precise suggestions, assisting them in making prompt, well-informed treatment selections.
- **Performance Evaluation and Optimization:** Regularly analyze the system using accuracy, precision, recall, and F1-score metrics to ensure reliable performance and continual development.

VI. APPLICATIONS

There are numerous uses for the medicine recommendation system that uses machine learning in the medical field and other fields. It can act as a patient's virtual assistant by making recommendations for medications in real time depending on their symptoms and conditions, so making basic healthcare treatments more accessible. It can be used by medical professionals to enhance diagnostic procedures, providing precise treatment choices and lowering diagnostic errors. By integrating the system with telemedicine platforms, users can receive individualized medication recommendations and conduct remote consultations. It can be used by pharmacies and drugstores to recommend substitute medications for prescriptions that are out of stock, guaranteeing client pleasure. It can also help those with long-term illnesses by providing nutritional recommendations, exercise schedules, and safety measures to properly maintain their health. Additionally, the approach can be modified for medical education, aiding professionals and students in effectively learning symptom-to-treatment mapping.

- I. Algorithm Support Vector Classifier (SVC) was used. The Support Vector Classifier (SVC) method is a key part of the Medicine recommendation system project, which uses it to prescribe medications. Based on a variety of input variables, SVC, a supervised learning algorithm frequently used for classification tasks, is utilized to categorize patient data into discrete drug groups. These characteristics cover a wide range of patient characteristics, such as demographics, symptoms, medical history, and test results. To guarantee optimal model performance, careful data preprocessing is carried out before model training.
- II. Random Forest Classifier – For handling complex feature interactions.
- III. Gradient Boosting Classifier – For boosting model performance.
- IV. K Neighbors Classifier – For classification based on symptom similarity.
- V. Multinomial NB – Naïve Bayes for probabilistic disease prediction.

VII. RESULTS

The machine learning-based medication recommendation system showed encouraging results, attaining over 85% accuracy in mapping symptoms to suggested medications using sophisticated machine learning models.

as measured by F1-score, recall, and precision. The technology offered real-time recommendations, enabling users to enter symptoms and get pertinent suggestions right away via an easy-to-use interface. Its comprehensive health advice,

which included food suggestions, exercise regimens, and required precautions, ensured a comprehensive approach to symptom management and went beyond medical recommendations. By lowering the possibility of negative effects, safety measures like medication interaction warnings and contraindication alerts increased user trust. By using user feedback to improve suggestions, the feedback mechanism further enhanced performance. The system showed flexibility and scalability, which enable it to support more diseases, symptoms, and medications in the dataset, hence making it appropriate for wider applications. The system proven to be a dependable, easy-to-use, and effective tool for enhancing healthcare accessibility and decision-making, with the potential to be used in pharmacies, telemedicine platforms, and health monitoring applications.



Health Care Center

Enter Symptoms:

Predict

Fig 3 : Overview of model

Our ML System Results

Predicted Disease: Fungal infection	
Disease Description	Fungal infection is a common skin condition caused by fungi.
Precautions	<ul style="list-style-type: none"> Bath twice use detol or neem in bathing water keep infected area dry use clean cloths
Medications	["Antifungal Cream", "Fluconazole", "Terbinafine", "Clotrimazole", "Ketoconazole"]
Recommended Diet	["Antifungal Diet", "Probiotic", "Garlic", "Coconut oil", "Turmeric"]
Workout	0 Avoid sugary foods 1 Consume probiotics 2 Increase intake of garlic 3 Include yogurt in diet 4 Limit processed foods 5 Stay hydrated 6 Consume green tea 7 Eat foods rich in zinc 8 Include turmeric in diet 9 Eat fruits and vegetables Name: workout, dtype: object
Diet	

Fig 4: Recommendation of our ML model

VIII. PERFORMANCE ANALYSIS AND DISCUSSION

The Medicine Recommendation System's performance study demonstrated its strong capacity to provide prompt, accurate suggestions based on symptoms submitted by users. Training on a well-structured dataset, the machine learning model continuously produced good performance metrics, with precision, recall, and F1-score surpassing 85%, demonstrating its dependability and efficiency in determining the right medications and reducing mistakes. By providing a comprehensive healthcare solution, the system's capacity to classify symptoms according to severity and recommend holistic care strategies, like nutrition recommendations, exercise regimens, and precautions, contributed substantial value. By gathering user input, the feedback mechanism included into the system allowed for continual improvement, improving overall system accuracy and refining recommendations. The need of thorough data

preparation, which made sure that symptom descriptions, illnesses, and drug interactions were appropriately captured and allowed the model to generalize well across different circumstances, was a major topic of discussion. The system's capacity to accommodate more ailments, symptoms, and medications demonstrated its scalability, enabling it to be flexible enough for real-world applications and bigger, more varied datasets. Nevertheless, some restrictions were noted, including the challenge of handling unclear or partial user input and the requirement to match recommendations with geographical, cultural, and demographic particulars for wider applicability. Performance in various deployment scenarios, such as local and cloud-based systems, showed that the system remained responsive and efficient, which made it appropriate for incorporation into wearable medical technology, pharmacies, and telemedicine platforms. Future enhancements might include real-time interface with medical databases for updated medication databases, the addition of patient history for more individualized suggestions, and the use of sophisticated natural language processing (NLP) algorithms to better understand complex user questions. Additionally, addressing Data privacy and avoiding an over-reliance on automated systems are two ethical issues that are still very important.

IX. CONCLUSION

To sum up, the medication recommendation system is a game-changing tool that has broad ramifications for patient outcomes, healthcare delivery, and biological research. The system provides precise, tailored pharmaceutical recommendations that maximize treatment choices and enhance patient outcomes through its data-driven methodology and cutting-edge machine learning capabilities. The system's effectiveness, dependability, and scalability have been proven by the thorough implementation, testing, and validation procedures, making it a useful tool in clinical practice. The system has wider ramifications for population health management, clinical decision support, and biological innovation in addition to its direct effects on medication administration. The system can support clinical research efforts, inform public health campaigns, and propel improvements in medical development by utilizing real-world patient data. Its incorporation into cutting-edge medical technology increases its accessibility and reach while enabling patients to take an active role in their treatment and enhancing medication adherence. All things considered, the medication prescription system marks a paradigm shift in the provision of healthcare, encouraging cooperation, creativity, and superiority in patient-focused treatment. Its importance as a pillar of contemporary healthcare delivery is highlighted by its capacity to promote advancements in patient outcomes, cost-effectiveness, and healthcare quality. The medication recommendation system acts as a lighthouse of innovation and a driving force for progress in the quest for universally improved health as we continue to adopt data-driven strategies and technological breakthroughs in healthcare.

X. FUTURE SCOPE

The medication recommendation system presents a vast field for investigation and development in the future. Integrating multimodal data sources, including genetic profiles, medical pictures, and patient data, is one way to conduct additional study. reported results, in order to improve the predictive power of the system and offer a more comprehensive view of patient health. By customizing drug recommendations to each patient's preferences, socioeconomic circumstances, and cultural background, enhanced personalization algorithms can improve treatment adherence and health outcomes. In order to provide healthcare more effectively, proactive intervention methods and individualized treatment planning can be made possible by longitudinal analysis and predictive modeling based on thorough patient histories. By improving doctors' comprehension of the system's recommendations, explainable AI and model interpretability techniques help promote acceptance and trust in clinical practice. Continuous assessment of the system's performance can be made possible via real-time monitoring tools and feedback mechanisms, enabling prompt intervention and improvement. Ethical and regulatory considerations remain paramount, necessitating ongoing efforts to address patient privacy, consent, and data security concerns. [15].

REFERENCES

1. Edgardo Ferran, Ian Dunham, Paul Czodrowski, Dominic Clark, Yanchao Tan, Chengjun Kong, and others, KDD '22, Washington, DC, USA, pp. 14–18, August 2022
2. "Machine Learning Drug Discovery and Development" by S. Momtahn, F. Al-Obaidy, and F. Mohammadi, IEEE Canadian Conference on Electrical and Computer Engineering (CCECE), 2019, pp. 1-6.

3. "Medicine Recommendation System Based On Patient Reviews" by S. Garg, 11th International Conference on Cloud Computing Data Science & Engineering (Confluence), 2021, pp. 175-181, 2021.
4. "APPLICATION OF MACHINE LEARNING IN DRUG DISCOVERY," by A. Abdelkrim, A. Bouramoul, and I. Zenboud, 2021 International Conference on Theoretical and Applicative Aspects of Computer Science (ICT AACS), pp. 1–8, 2021.
5. "Drugs Rating Generation and Recommendation from Sentiment Analysis of Drug Reviews using Machine Learning," by M. D. Hossain, M. S. Azam, M. J. Ali, and H. Sabit, Emerging Technology in Computing Communication and Electronics (ETCCE), 2020, pp. 1-6.
6. "Pre-training of graph augmented transformers for medication recommendation" by J. Shang, T. Ma, C. Xiao, and J. Sun, IJCAI, pp. 5953-5959, 2019.
7. "A Smart Healthcare Recommendation System for Multidisciplinary Patients with Data Fusion Based on Deep Ensemble Learning," AAAI, pp. 1126-1133, 2020, by J. Sun, Gamenet, C. Xiao, T. Ma, and H. Li.
8. "Effective deep learning approach for augmented detection of coronavirus disease" by A. Sedik, M. Hammad, F. E. Abd El-Samie, B. B. Gupta, and A. A. A. El-Latif, Neural Computing & Applications, vol. 8, 2021.



INTERNATIONAL
STANDARD
SERIAL
NUMBER
INDIA



INTERNATIONAL JOURNAL OF INNOVATIVE RESEARCH

IN SCIENCE | ENGINEERING | TECHNOLOGY

 9940 572 462  6381 907 438  ijirset@gmail.com



www.ijirset.com

Scan to save the contact details