



# International Journal of Innovative Research in Science Engineering and Technology (IJIRSET)

*(A Monthly, Peer Reviewed, Refereed, Scholarly Indexed, Open Access Journal)*



**Impact Factor: 8.699**

**Volume 14, Issue 5, May 2025**

# FarmFusion: Centralized Farming Solutions Platform

**Prof. S. A. Shivarkar, Aniket Aher, Taufiq Attar, Yashwant Badhe, Abhishek Gaikwad, Nilesh Ahire**

Assistant Professor, Department of Computer, SRES'S Sanjivani College of Engineering Kopargaon,  
Maharashtra, India

Student, Department of Computer, SRES'S Sanjivani College of Engineering, Kopargaon, Maharashtra, India

Student, Department of Computer, SRES'S Sanjivani College of Engineering, Kopargaon, Maharashtra, India

Student, Department of Computer, SRES'S Sanjivani College of Engineering, Kopargaon, Maharashtra, India

Student, Department of Computer, SRES'S Sanjivani College of Engineering, Kopargaon, Maharashtra, India

Student, Department of Computer, SRES'S Sanjivani College of Engineering, Kopargaon, Maharashtra, India

**ABSTRACT:** The agricultural sector continues to confront several persistent challenges such as unpredictable weather, inadequate access to timely information, limited availability of farming essentials, and a general lack of awareness regarding government support programs. These barriers contribute to reduced productivity and increased uncertainty among farmers.

**FarmFusion: Centralized Farming Solutions** Platform is designed to offer a comprehensive digital approach to these issues. It consolidates key farming services into a single, unified system—providing real-time weather updates, a built-in e-commerce platform for purchasing seeds, fertilizers, and tools, insights into ongoing government schemes, an interactive community forum, and direct access to agricultural experts for tailored advice. The platform also distributes farming tips, latest news, and best practices to support informed decision-making and enhance operational efficiency. Built using modern web technologies like ReactJS, NodeJS, ExpressJS, and MongoDB, FarmFusion delivers a user-friendly interface with robust backend capabilities. By centralizing these essential services, the platform aims to modernize conventional farming practices, improve farmer welfare, and encourage sustainable agricultural development.

**KEYWORDS:** - 1. MERN Stack (MongoDB, Express.js, React.js, Node.js) 2. Agriculture platform 3. Admin functionalities 4. Appointment scheduling 5. Agricultural community

## I. INTRODUCTION

Agriculture plays a vital role in the economic foundation of many nations, particularly in developing countries like India, where a large segment of the population depends on farming as their primary livelihood. Despite its importance, the sector continues to face numerous obstacles. These include erratic weather conditions, scattered access to necessary resources, difficulty in obtaining agricultural supplies, and insufficient knowledge of government initiatives and policies. In addition, the digital divide has further widened the gap, limiting farmers' exposure to technological advancements that have the potential to transform their practices.

Contemporary farming increasingly demands quick access to accurate information, reliable supply chains, professional advice, and community-driven knowledge exchange. In the absence of a centralized system, farmers are often forced to depend on disjointed and outdated sources of information, which leads to inefficiencies, reduced output, and economic vulnerability.

To overcome these issues, we introduce **FarmFusion**—a centralized digital platform tailored to integrate essential agricultural services. It brings together real-time weather updates, a digital marketplace for agri-products, a vibrant community forum, information on current government schemes, and one-on-one access to agricultural experts. This solution aims to streamline and elevate the farming experience by utilizing modern web technologies and offering



farmers a powerful digital tool for both day-to-day operations and long-term planning.

Built with a user-centric approach, FarmFusion employs ReactJS for its frontend interface, NodeJS and ExpressJS for backend operations, and MongoDB as its database solution. The platform not only seeks to enhance agricultural productivity but also aims to bridge the divide between conventional farming methods and emerging digital innovations.

## II. LITERATURE SURVEY

1) A. A. Foutia et al. [1] (2024) introduced a comprehensive system aimed at monitoring and managing small-scale farms, utilizing IoT technologies to improve agricultural productivity. The solution incorporates LoRa-based communication for data collection, which offers wide-range connectivity with low power usage—ideal for rural agricultural settings. Their framework includes the deployment of wireless base stations, environmental sensors, and actuators, enabling the continuous monitoring of key farming parameters such as soil moisture, temperature, and humidity. To empower farmers with remote access and control, a web-based interface was developed that allows real-time data visualization and automation of farming operations for better crop outcomes. While the system presents a promising approach to smart farming, the authors noted limitations such as the complexity of system integration, reliance on consistent internet connectivity, and high initial implementation costs, which may hinder large-scale adoption.

2) S. E. Ullah et al. [2] (2016) presented a systematic methodology for building an e-commerce platform, emphasizing the use of object-oriented design principles and the Model-View-Controller (MVC) framework to achieve an organized and scalable system architecture. The research highlighted the significance of domain modeling in simplifying and optimizing business workflows, which contributes to better scalability and system maintenance. The proposed solution featured essential components such as structured databases, web servers to manage client-server communication, and user-friendly browser interfaces aimed at enhancing overall user interaction. Core functionalities included features like product listings, user login and registration, order tracking, and secure payment processing, establishing a comprehensive foundation for a functional online retail system. The authors also addressed the importance of software testing techniques to maintain system robustness. Nonetheless, the study acknowledged several technical challenges such as managing high user traffic, ensuring database performance, and addressing security vulnerabilities, especially when considering deployment at scale.

3) M. K. Korir et al. [3] (2023) developed an AI-powered chatbot system aimed at supporting potato farmers in Kenya, particularly in overcoming barriers like limited availability of quality seeds and lack of expert guidance. Built using IBM Watson Assistant, the chatbot incorporated advanced technologies including Natural Language Processing (NLP), Natural Language Understanding (NLU), and Natural Language Generation (NLG) to offer personalized and interactive support. To improve relevance and accuracy, the system also utilized Geographic Information System (GIS) data along with soil analysis to generate region-specific recommendations, thereby assisting farmers in making better-informed decisions. The development process involved well-defined phases such as data gathering, implementation, testing, model training, and performance evaluation. Results were promising—showing 97.7% message coverage, 78.4% conversation retention, 88.05% overall success, and 60% user satisfaction, with 80% of users likely to reuse the system. However, the study also acknowledged areas for improvement, including the need to enhance NLP performance for different dialects, boost user engagement, and tackle digital literacy issues among rural farmers. The research concluded that AI-based consultation tools hold substantial potential to boost farming efficiency and contribute to improved food security, especially when iteratively refined based on user feedback and expert recommendations.

4) A. Shaji et al. [4] (2022) developed a weather prediction model leveraging machine learning algorithms to improve forecast accuracy, especially in regions where weather stations are limited. The study focused on analyzing key meteorological factors, including temperature, humidity, wind speed, wind direction, visibility, and cloud cover, using various machine learning methods such as Random Forest, Decision Tree, MLP Classifier, Linear Regression, and Gaussian Naïve Bayes. A comparison of these models was performed to assess their forecasting precision. The research underscored the significant potential of machine learning in enhancing weather predictions, which can be particularly advantageous for farmers who depend on reliable weather information for their agricultural activities. However, challenges such as limited data access, high computational demands, and the necessity for real-time updates were acknowledged. The study concluded that machine learning-based weather prediction systems hold promise for improving forecasting accuracy, especially in remote and under-monitored areas, though further refinements are needed.

for better performance and flexibility.

5)J. Bauer et al. [5] (2018) developed an agricultural monitoring system aimed at advancing smart farming practices by utilizing Internet of Things (IoT) technology and Wireless Sensor Networks (WSNs). The system was designed to support precision agriculture by incorporating affordable sensors and actuators that provide real-time, location-specific data, with a primary focus on monitoring the Leaf Area Index (LAI), an important indicator of crop health. The research emphasized how IoT-enabled monitoring can enhance agricultural efficiency, sustainability, and productivity. Field experiments revealed valuable insights into practical issues such as the need for accurate sensor calibration, maintaining reliable network connections, and mitigating environmental disruptions. Initial implementation results confirmed the system's usefulness in precision agriculture. Nevertheless, the study acknowledged certain constraints, including reliance on specific hardware, the complexity of managing large volumes of data, and the challenge of maintaining strong connectivity in rural settings. The authors concluded that while IoT-based smart farming systems show great promise, addressing issues related to scalability and real-time data handling is essential for widespread adoption.

### **III. PROPOSED METHODOLOGY**

#### **PROBLEM STATEMENT**

Farmers encounter a range of difficulties such as erratic weather conditions, limited access to real-time information, challenges in procuring necessary agricultural inputs, and a lack of awareness about current government programs. These problems contribute to decreased efficiency and greater unpredictability in farming activities. To overcome these obstacles, there is a clear requirement for a unified digital platform that equips farmers with essential tools, resources, and updates to enhance their agricultural practices, ensure timely access to supplies, and keep them informed about important policies and initiatives.

This study tackles the common difficulties faced in agriculture by creating FarmFusion: A Centralized Farming Solutions Platform built with contemporary web technologies. The platform brings together multiple features, including live weather information, an online marketplace for agricultural inputs, expert advisory services, alerts on government schemes, community interaction spaces, and the latest farming news. By centralizing these functions, FarmFusion seeks to provide farmers with timely insights, easy access to vital resources, and collaborative support—contributing to improved farm productivity, better planning, and reduced vulnerability to unpredictable challenges.

### **IV. METHODOLOGY**

The development of FarmFusion: A Centralized Farming Solutions Platform was carried out through a structured and incremental approach, ensuring the platform is scalable, user-friendly, and effective in addressing the real needs of farmers. The methodology involved detailed research, planning, design, implementation, and testing, executed in multiple stages.

#### **1. Research and Requirement Analysis :**

- A thorough review was conducted to understand existing digital solutions in agriculture and the key issues faced by farmers.
- Input was collected from farmers, agriculture experts, and policy-related resources to identify essential features for the platform.
- Both functional requirements (like weather integration, e-commerce features) and non-functional requirements (like performance, scalability, and usability) were clearly outlined.

#### **2. System Development Approach (Incremental Model) :**

- Requirement Gathering: Focused on user pain points, such as limited access to timely weather data, agricultural products, expert guidance, and policy updates.
- System Design: MERN stack architecture.

#### **Implementation:**

- ♣ **Frontend:** HTML, CSS, Javascript, React.js
- ♣ **Backend:** Node.js, Express.js

- ♣ **Database:** MongoDB
- ♣ **Weather Module:** Real-time weather data fetched using OpenWeatherMap API.
- ♣ **Testing:** Functional, performance, and security testing.

Technology/Library	Contribution Score (0–10)
React.js	9
Express.js	8
MongoDB	8
Node.js	9
OpenWeatherAPI	7
JWT	6
Axios	6

Fig. III.1. Comparative Contribution of technologies in FarmFusion table

The comparative contribution graph visually represents the relative importance of each technology or library integrated into the Resume Matcher system. These contribution scores (ranging from 0 to 10) are based on two main criteria: functional impact on the system's logic and frequency of use during the resume-job matching process.

Breakdown of Technology Contributions:

#### 1. React.Js (9/10)

React.js is at the heart of the front-end development, enabling the creation of dynamic and interactive user interfaces. It allows farmers to easily navigate various modules such as weather updates, product listings, and expert forums with a responsive and efficient design. Its component-based architecture ensures reusability and maintainability.

#### 2. Node.Js (9/10)

Node.js acts as the core runtime environment for executing backend JavaScript logic. It ensures fast and scalable handling of API requests, particularly for real-time features such as weather data retrieval, chat systems, and authentication. Its non-blocking I/O model enhances the overall performance of the platform.

#### 3. Express.js (8/10)

Express.js serves as the server-side framework for handling routing and middleware logic. It simplifies API endpoint creation for data retrieval and submission, supporting secure user interactions and CRUD operations for farming supplies, consultation records, and user profiles.

#### 4. MongoDB (8/10)

MongoDB is used for data storage, providing a flexible schema to store diverse information such as product details, scheme updates, and user data. Its document-based structure supports quick retrieval and scaling, which is essential for a growing farmer user base.

#### 5. OpenWeatherMap API(7/10)

This third-party service integrates real-time weather forecasts into the platform. It provides essential data like temperature, humidity, and rainfall predictions, enabling farmers to make better decisions regarding irrigation, harvesting, and crop planning.

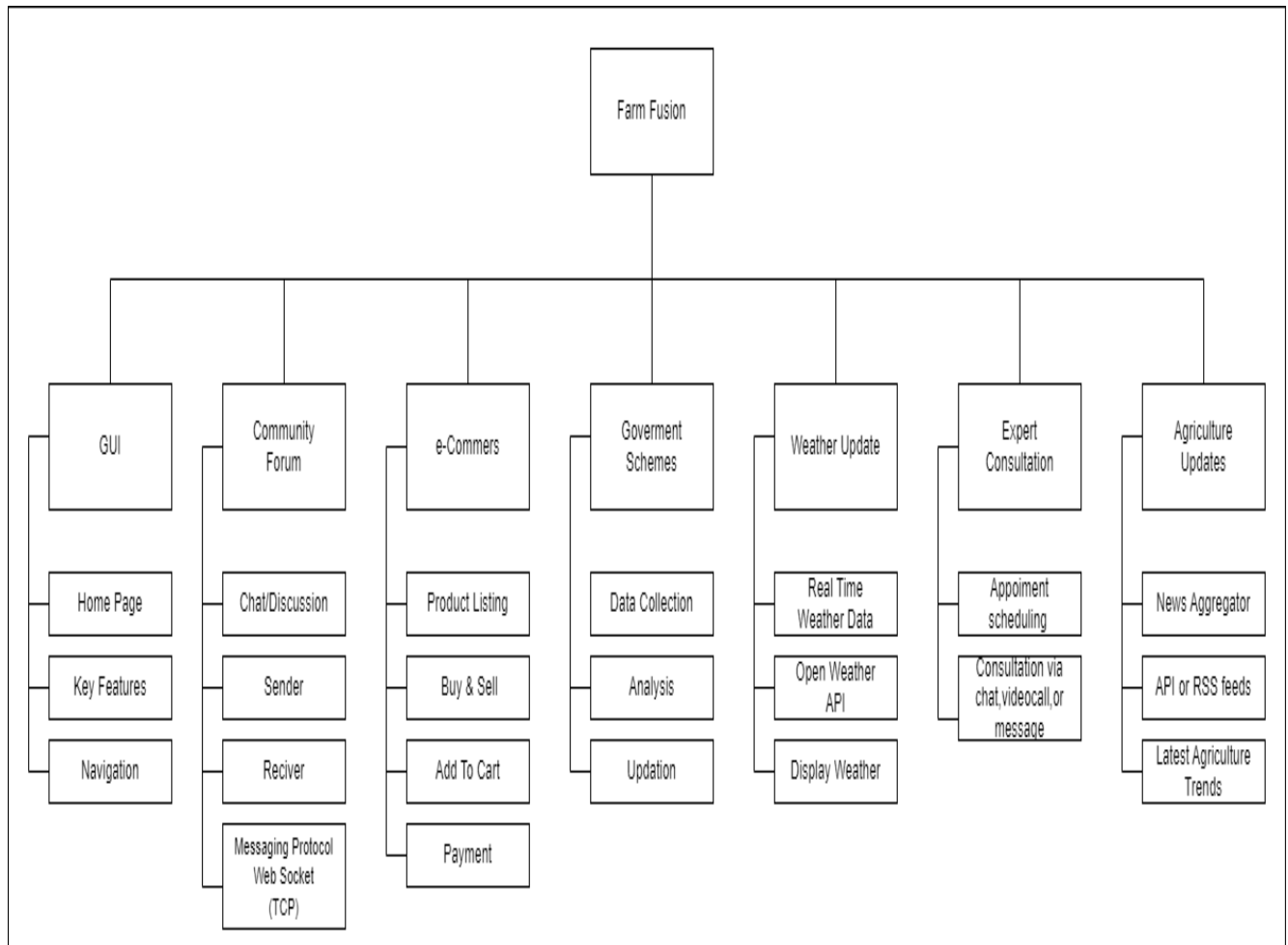
#### 6. JSON Web Token(JWT)(6/10)

JWT enables secure authentication across sessions by providing encrypted tokens for user login. This helps protect user data and manage role-based access for admins, farmers, and agricultural experts.

## 7. Axios (6/10)

Axios handles API communication between the frontend and backend. It simplifies HTTP requests and ensures smooth data fetching for dynamic elements such as weather updates and e-commerce modules.

### FLOWCHART:-



## V. IMPLEMENTATION

The implementation phase transforms the conceptual design into a functional and operational platform. It plays a vital role in the project's success by ensuring that the theoretical model is effectively executed and provides confidence to users in its usability and impact. FarmFusion comprises several key modules that work in harmony to deliver comprehensive services to farmers:

### 1. User Interface (UI/UX):

- **Homepage:** Serves as the primary entry point, offering users an overview of the platform's purpose and key tools.
- **Core Features Display:** Briefly showcases the system's main functionalities to attract user attention.
- **Intuitive Navigation:** Provides an easy-to-use menu and navigation bar to seamlessly access different sections.

**2. Community Forum:**

- **Interactive Discussions:** Enables farmers, experts, and stakeholders to exchange knowledge and opinions on agricultural topics.
- **User-to-User Messaging:** Supports communication between platform members using sender/receiver roles.
- **Real-Time Communication:** Leverages WebSocket (TCP protocol) to facilitate live chat features across the platform.

**3. E-Commerce Module**

- **Product Catalog:** Lists agricultural goods such as seeds, fertilizers, equipment, and more.
- **Marketplace Functionality:** Allows users to list items for sale and browse products for purchase.
- **Cart Integration:** Supports bulk purchasing through an intuitive "add to cart" feature.
- **Secure Payment Gateway:** Facilitates online transactions safely and efficiently.

**4. Government Scheme Updates:**

- **Scheme Data Aggregation:** Collects detailed information on current agricultural support programs from the government.
- **Information Processing:** Analyzes and categorizes schemes for better understanding.
- **Timely Notifications:** Keeps users informed with frequent updates on newly launched schemes and their benefits.

**5. Weather Monitoring:**

- **Live Agricultural Weather Info:** Offers up-to-date weather conditions specific to farming activities.
- **API Integration (OpenWeatherMap):** Connects with third-party services to fetch accurate weather forecasts.
- **Graphical Representation:** Displays weather updates through visually engaging charts or widgets.

**6. Expert Advice Portal:**

- **Consultation Booking:** Lets users schedule one-on-one sessions with professionals in the field.
- **Multi-Channel Communication:** Supports expert interaction via chat, video conferencing, or message-based systems for flexibility.

**7. Agricultural News Feed:**

- **Curated News Updates:** Brings the latest happenings in agriculture, including research breakthroughs and market news.
- **APIs & RSS Integration:** Gathers news through reliable APIs or RSS feeds from agricultural websites.
- **Trend Highlights:** Showcases emerging farming technologies and practices to keep users updated on modern methods.

**VI. RESULTS AND ANALYSIS**

The FarmFusion system was effectively developed and implemented as an integrated digital platform aimed at serving the multifaceted needs of the agricultural community. Each feature was designed and tested independently to ensure reliability and was later combined into a cohesive system to verify seamless interaction and user experience. The outcomes demonstrate that the platform is both practical and highly usable in real-world agricultural scenarios.

All major components of the platform were assessed against specific use cases to verify their performance and correctness:

**1.Weather Updates:** The platform successfully retrieved real-time weather information based on the user's location using the OpenWeather API. Updates and alerts were shown promptly with minimal delay.

**2.E-Commerce Module:** Users were able to sign up, explore agricultural products, add items to their shopping cart, and complete purchases using a secure payment interface.



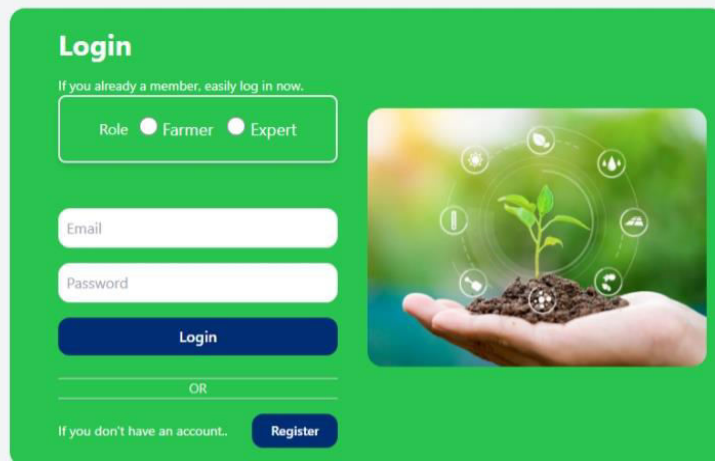
**3.Community Forum:** Registered users could post queries and receive replies from other users or agricultural professionals. The real-time chat feature was validated for speed and interactivity.

**4.Expert Advice:** Farmers could book appointments with experts and interact through chat or video calls. Confirmation and notifications were handled smoothly by the backend system.

**5.Government Schemes and News Feed:** Real-time data regarding government schemes and agricultural news was retrieved and displayed correctly, increasing user awareness and participation.

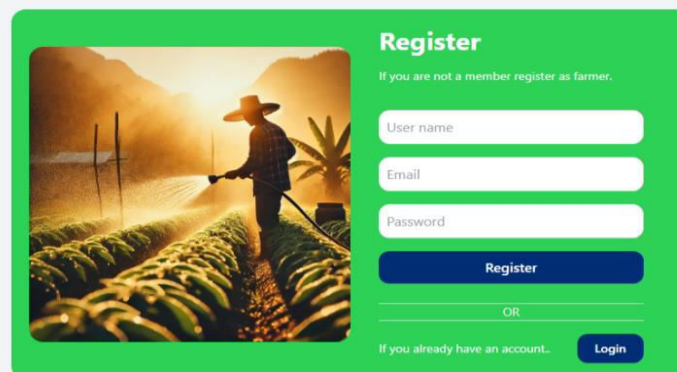
## VII. RESULT

Fig 1:Login Page



The login page features a green background. On the left, there is a 'Login' section with the text 'If you already a member, easily log in now.' Below this, there is a 'Role' selector with radio buttons for 'Farmer' and 'Expert'. Underneath are input fields for 'Email' and 'Password', followed by a blue 'Login' button. Below the login button is an 'OR' separator. At the bottom, there is a link 'If you don't have an account..' and a blue 'Register' button. On the right side of the login form, there is an image of a hand holding soil with a small green plant growing out of it, surrounded by circular icons representing various agricultural concepts.

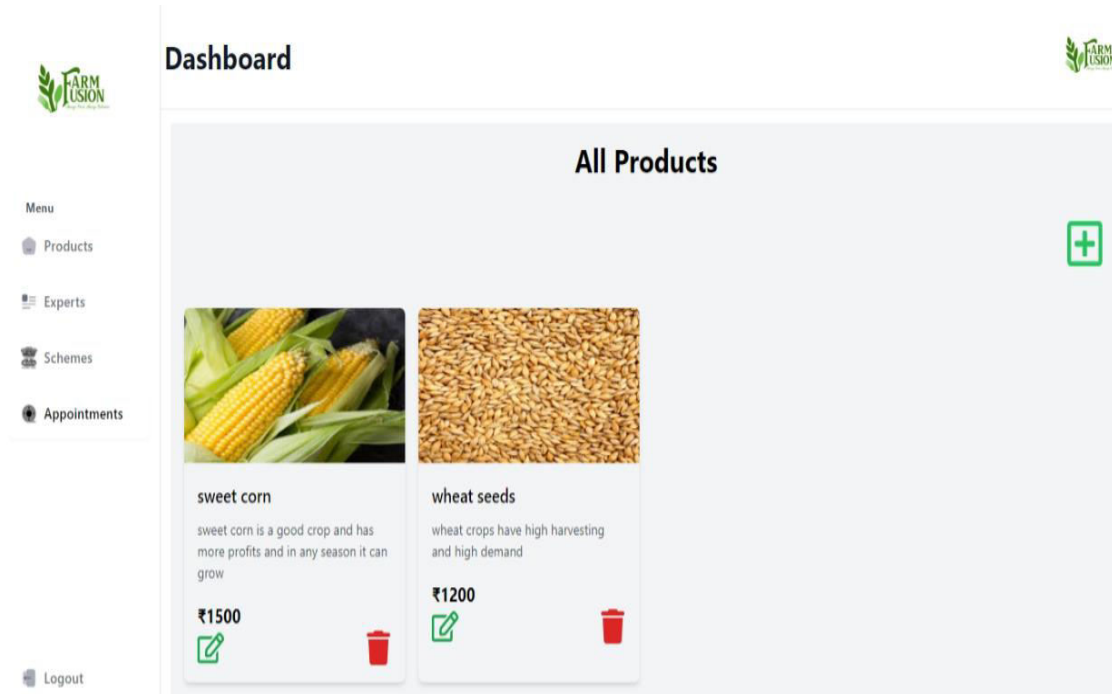
Fig 2:Rigester Page



The register page features a green background. On the left, there is an image of a farmer working in a field. On the right, there is a 'Register' section with the text 'If you are not a member register as farmer.' Below this, there are input fields for 'User name', 'Email', and 'Password', followed by a blue 'Register' button. Below the register button is an 'OR' separator. At the bottom, there is a link 'If you already have an account..' and a blue 'Login' button.

Fig 3:Admin Page





## VIII. CONCLUSION

FarmFusion represents a significant stride toward addressing the multifaceted challenges faced by the agricultural community. By consolidating essential services into a unified digital platform, it provides farmers with timely access to weather forecasts, an integrated e-commerce marketplace for agricultural inputs, and a collaborative forum for peer-to-peer engagement.

These features collectively enhance decision-making, productivity, and resource accessibility for farmers. Furthermore, the inclusion of government scheme updates and expert consultation services ensures that users receive both financial support and technical expertise. This comprehensive approach not only mitigates traditional challenges but also promotes the adoption of modern, data-informed farming techniques.

The platform fosters collaboration among farmers, stakeholders, and industry experts, creating a knowledge-sharing ecosystem that encourages innovation and collective problem-solving. Its modular and scalable design positions it as a forward-compatible solution, adaptable to the evolving needs of the sector.

By supporting sustainable agricultural practices and enabling informed decision-making, FarmFusion contributes meaningfully to goals such as rural development, economic resilience, and national food security. The platform's alignment with the broader digital transformation agenda helps bridge the digital divide in rural regions, laying the foundation for a robust, efficient, and future-ready agricultural landscape.

## REFERENCES

- [1] A. A. Foutia, A. Bouhounali, S. Bouhoun, M. Adnane, and A. Benseddik, "Development of an end-to-end solution for small farm monitoring and control," in 2024 4th International Conference on Embedded Distributed Systems (EDiS), 2024, pp. 333–337.
- [2] S. E. Ullah, T. Alauddin, and H. U. Zaman, "Developing an e-commerce website," in 2016 International Conference on Microelectronics, Computing and Communications (MicroCom), 2016, pp. 1–4.
- [3] M. K. Korir, W. Mwangi, and M. W. Kimwele, "Artificial intelligence-based chatbot model providing expert advice to potato farmers in Kenya," in 2023 IEEE AFRICON, 2023, pp. 1–6.
- [4] A. Shaji, A. Amritha, and V. Rajalakshmi, "Weather prediction using machine learning algorithms," in 2022

International Conference on Intelligent Controller and Computing for Smart Power (ICICCSP), 2022, pp. 1–5.

[5] J. Bauer and N. Aschenbruck, “Design and implementation of an agricultural monitoring system for smart farming,” in 2018 IoT Vertical and Topical Summit on Agriculture - Tuscany (IOT Tuscany), 2018, pp. 1–6.

[6] A. S. Al-Mamun, M. S. Islam, and M. A. Rahman, “A smart farming system using IoT and cloud computing,” in 2020 International Conference on Smart Farming and IoT Applications, 2020, pp. 1–6.

[7] H. B. M. Z. S. Zubairi, M. F. M. Jaffar, and A. R. Baharudin, “A mobile application for agriculture product and service management,” Journal of Agricultural Informatics, vol. 10, no. 1, pp. 45–53, 2019.

[8] R. S. Kumar, V. G. S. R. S. V. Ravi, and P. S. K. Rao, “Blockchain-based agricultural supply chain management system,” International Journal of Blockchain Technology, vol. 4, no. 2, pp. 101–112, 2021.

[9] S. L. S. Balamurugan, A. V. Mohan, and P. K. Subramani, “AI and IoT integration for precision agriculture in India,” Computers and Electronics in Agriculture, vol. 192, p. 106451, 2022.

[10] M. M. G. A. Ghernaout, A. B. N. Shabir, and K. A. S. Omar, “An e-commerce platform for agricultural products and services,” Journal of Agricultural Engineering, vol. 49, no. 3, pp. 64–72, 2018.



INTERNATIONAL  
STANDARD  
SERIAL  
NUMBER  
INDIA



# INTERNATIONAL JOURNAL OF INNOVATIVE RESEARCH

IN SCIENCE | ENGINEERING | TECHNOLOGY

 9940 572 462  6381 907 438  [ijirset@gmail.com](mailto:ijirset@gmail.com)



[www.ijirset.com](http://www.ijirset.com)

Scan to save the contact details