



International Journal of Innovative Research in Science Engineering and Technology (IJIRSET)

(A Monthly, Peer Reviewed, Refereed, Scholarly Indexed, Open Access Journal)



Impact Factor: 8.699

Volume 14, Issue 5, May 2025

Classification of Blood Smear Images for Detection of Malaria using Machine-Learning Algorithms

Sumedh G. Dhengre, Yuvraj R. Kottalagi, Shruti D. Waghmare, Prayag D. Patil

Assistant Professor, Department of Computer Engineering, AISSMS College of Engineering, Savitribai Phule Pune University, Pune, India

Department of Computer Engineering, AISSMS College of Engineering, Savitribai Phule Pune University, Pune, India

Department of Computer Engineering, AISSMS College of Engineering, Savitribai Phule Pune University, Pune, India

Department of Computer Engineering, AISSMS College of Engineering, Savitribai Phule Pune University, Pune, India

ABSTRACT: Malaria are serious diseases that require quick and accurate diagnosis for effective treatment. The traditional method of detecting these diseases involves examining blood smear images under a microscope, which is time-consuming, requires skilled professionals, and is prone to human error. To address these issues, this study aims to build an automated classification system for blood smear images by leveraging machine learning and deep learning approaches. The system incorporates Convolutional Neural Networks (CNNs), utilizes transfer learning with models like ResNet50, MobileNet, DenseNet, VGG16, VGG19, and Inception V3, and employs YOLO (You Only Look Once) for object detection tasks. The images are first pre-processed to enhance their quality, followed by feature extraction to identify key patterns. The model then classifies the images into infected and non-infected categories with high accuracy. The findings indicate that this method enables quicker, more accurate, and economical disease detection, minimizing the need for manual examination. This system can be highly beneficial, especially in areas with limited access to medical facilities and expert pathologists.

KEYWORDS: Automated Diagnosis, Dengue Detection, Malaria Detection, Blood Smear Classification, Machine Learning, Convolutional Neural Networks (CNNs), Medical Image Processing, Web-Based Diagnostic System, Disease Detection Automation, Early Disease Detection

I. INTRODUCTION

Malaria remains one of the most prevalent and life-threatening vector-borne illnesses, particularly in tropical and subtropical areas. These infections are primarily spread through mosquito bites and continue to pose a major public health challenge, especially in low-resource settings with inadequate healthcare infrastructure. Timely and precise diagnosis is essential for effective disease management and prevention. However, conventional diagnostic techniques—such as the microscopic analysis of blood smears—are often limited by their reliance on expert interpretation, time-consuming procedures, and susceptibility to human error caused by fatigue or varying skill levels. This highlights the urgent need for a dependable, automated diagnostic solution that can support medical professionals in rapidly and accurately detecting infected samples.

The conventional approach for detecting malaria involves staining blood smear samples and examining them under a microscope to identify parasites or viral markers. Although this technique is regarded as the gold standard, it comes with notable limitations such as the need for experienced personnel, substantial laboratory expenses, and variability in results due to subjective human interpretation. Furthermore, in resource-limited settings, access to well-equipped laboratories and trained pathologists is often restricted, leading to delays in diagnosis and treatment. To address these challenges, computer-aided diagnostic (CAD) systems utilizing machine learning (ML) and deep learning (DL) techniques have emerged as effective alternatives for automating the classification of blood smear images.

In this research, we propose a machine-learning-based diagnostic system that leverages Convolutional Neural Networks (CNNs) and transfer learning models such as ResNet50, MobileNet, DenseNet, VGG16, VGG19, and Inception V3. These models are well-suited for image classification tasks and can analyze blood smear images to distinguish between

infected and non-infected samples with high accuracy. Additionally, we incorporate YOLO (You Only Look Once), an advanced object detection algorithm, to identify key features within the images, improving the detection process. The system operates through a well-defined pipeline comprising image preprocessing, feature extraction, classification, and result analysis, ensuring an effective and reliable workflow.

One of the key advantages of our approach is its ability to automate the diagnosis process, reducing the dependency on expert pathologists and minimizing errors caused by manual analysis. The developed system improves both the accuracy and speed of diagnosis, offering significant advantages for healthcare facilities in remote regions with limited access to medical specialists. Moreover, by integrating the model into a web-based diagnostic platform, the system enables real-time disease detection, allowing users to upload blood smear images and receive instant diagnostic results. This feature enhances accessibility and provides a cost-effective solution for large-scale implementation.

The primary objectives of this study are:

1. To design a reliable and fully automated diagnostic framework for malaria detection utilizing machine learning techniques.
2. To enhance classification accuracy by implementing CNNs, transfer learning models, and YOLO-based object detection.
3. To integrate the proposed system into a web-based interface for real-time and remote diagnostics.
4. To minimize human intervention and reduce misclassification errors caused by manual examination.

In conclusion, this system seeks to transform medical diagnostics by offering a rapid, dependable, and easily accessible method for disease detection. Through the use of advanced deep learning models and their integration into an intuitive web-based interface, the research supports the evolution of automated healthcare technologies, aiming to enhance patient care and alleviate pressure on medical infrastructure.

This research emphasizes the significance of AI-based medical image analysis and showcases the transformative potential of machine learning in disease diagnosis. Advancements in this area could further improve the precision and versatility of automated diagnostic systems, facilitating their broader implementation in clinical environments.

In conclusion, with dengue affecting millions worldwide, the incorporation of machine learning presents a promising approach to enhance disease prediction, diagnosis, and management. This review provides a systematic evaluation of current ML-based models for dengue, discussing their contributions, challenges, and the potential future landscape of ML applications in this field. By identifying promising methodologies and addressing the limitations of current research, we aim to provide a foundation for the ongoing development and application of ML-driven solutions to combat dengue and reduce its global burden.

II. BACKGROUND

Malaria is one of the most widespread and deadly vector-borne diseases, significantly affecting tropical and subtropical areas. Transmitted through mosquito bites, it represents a major global health challenge, especially in developing nations with limited healthcare infrastructure. The World Health Organization (WHO) reports that malaria led to around 247 million cases worldwide in 2021, resulting in over 619,000 deaths, predominantly in sub-Saharan Africa. Similarly, dengue fever impacts around 390 million people each year, with severe outbreaks primarily in Southeast Asia, South America, and parts of Africa.

Traditional diagnostic methods for malaria rely heavily on microscopic examination of stained blood smears, antigen-based rapid diagnostic tests (RDTs), and polymerase chain reaction (PCR) techniques. Although microscopy is considered the gold standard, it demands highly trained personnel, costly laboratory equipment, and is susceptible to human error caused by differences in skill levels and fatigue. Moreover, RDTs and PCR methods, though effective, are often inaccessible in resource-limited settings due to their cost and infrastructure requirements. These limitations hinder early disease detection and timely intervention, leading to increased morbidity and mortality rates.

Recent Advancements in AI for Medical Diagnostics

Recent advancements in artificial intelligence (AI) and machine learning (ML) have provided promising solutions for automating medical image analysis. Deep learning, particularly Convolutional Neural Networks (CNNs), has demonstrated remarkable accuracy in medical image classification and disease detection. Transfer learning models like ResNet50, MobileNet, DenseNet, VGG16, VGG19, and Inception V3 are widely applied in medical diagnostics for their capability to automatically extract intricate features from images, reducing the need for extensive manual input. Furthermore, object detection algorithms like YOLO (You Only Look Once), particularly YOLOv5, have shown significant promise in detecting malaria parasites -infected cells in blood smear images. YOLOv5 is a state-of-the-art real-time object detection model that processes entire images in a single pass, making it highly efficient for identifying abnormalities in microscopic images. The advantage of YOLOv5 over traditional CNN classifiers is its ability to locate and classify multiple objects in an image with high speed and precision, making it suitable for large-scale diagnostic applications.

Evaluation Metrics

To assess the performance of the proposed AI-based diagnostic system, several evaluation metrics are used:

1. **Accuracy:** Measures the overall correctness of predictions.

$$\text{Accuracy} = \frac{TP + TN}{TP + TN + FP + FN}$$

where:

- TP = True Positives (correctly identified infected images)
- TN = True Negatives (correctly identified uninfected images)
- FP = False Positives (misclassified healthy cases)
- FN = False Negatives (misclassified diseased cases)

2. **Precision (Positive Predictive Value):** Evaluates the correctness of positive classifications.

$$\text{Precision} = \frac{TP}{TP + FP}$$

3. **Recall (Sensitivity or True Positive Rate):** Measures the ability to correctly identify infected samples.

$$\text{Recall} = \frac{TP}{TP + FN}$$

4. **F1-score:** The harmonic mean of precision and recall, balancing false positives and false negatives.

$$\text{F1 - Score} = 2 \times \frac{\text{Precision} \times \text{Recall}}{\text{Precision} + \text{Recall}}$$

5. **Mean Average Precision (mAP):** Particularly relevant for object detection models like YOLOv5, mAP calculates the average precision across multiple classes.

$$\text{mAP} = \frac{1}{N} \sum_{i=1}^N \text{AP}_i$$

where AP_i is the average precision for each class i and N is the number of classes.

6. **Intersection over Union (IoU):** Used in object detection to measure the overlap between predicted and actual bounding boxes.

$$\text{IoU} = \frac{\text{Area of Overlap}}{\text{Area of Union}}$$

III. LITERATURE REVIEW

Traditional Diagnostic Approaches for Malaria

Malaria are primarily diagnosed using traditional methods such as microscopy, rapid diagnostic tests (RDTs), and polymerase chain reaction (PCR). Microscopy, considered the gold standard for malaria detection, requires the staining and manual inspection of blood smears to detect parasites. However, research has indicated that the accuracy of this method is highly dependent on the skill of the technician (Guerra et al., 2020). Similarly, dengue diagnosis relies on serological tests such as enzyme-linked immunosorbent assays (ELISA) and nucleic acid amplification tests (NAATs), which, while effective, are expensive and time-consuming (World Health Organization, 2021).

In resource-limited settings, these methods face significant challenges, including lack of trained personnel, infrastructure limitations, and diagnostic inconsistencies (Siqueira et al., 2020). As a result, researchers have explored automated solutions to improve diagnostic efficiency and accuracy.

The Role of Machine Learning and Deep Learning in Medical Diagnostics

Recent progress in artificial intelligence (AI) and machine learning (ML) has facilitated the development of automated diagnostic systems. Research has shown that deep learning methods, especially Convolutional Neural Networks (CNNs), can achieve high levels of accuracy in classifying medical images.

CNN-Based Approaches:

- Rajaraman et al. (2019) developed a CNN-based system for malaria detection, achieving an accuracy of 89.8% on blood smear images.
- Liang et al. (2021) utilized transfer learning models such as ResNet50 and VGG16 for automated parasite detection, significantly reducing diagnostic time.
- Sharma et al. (2022) explored a hybrid CNN-SVM approach for dengue detection using blood samples, reporting a classification accuracy of 92.7%.

Object Detection Models for Feature Identification:

- YOLO (You Only Look Once) has been used for malaria detection to locate parasites efficiently within blood smear images.
- Zhou et al. (2021) implemented Faster R-CNN for parasite segmentation, achieving better feature localization compared to traditional CNNs.

Comparative Performance of Transfer Learning Models

Numerous studies have evaluated and compared various deep learning architectures for medical image classification:

- ResNet50, MobileNet, DenseNet, VGG16, and Inception V3 are widely used in blood smear image classification due to their high accuracy and feature extraction capabilities.
- A study by Singh et al. (2023) evaluated these models for malaria detection, reporting ResNet50 as the best performer with an accuracy of 93.3%, followed by DenseNet (91.8%) and VGG16 (90.4%).
- For dengue detection, a study by Ahmed et al. (2023) found that Inception V3 outperformed other models, with an accuracy of 92.1% in distinguishing infected and non-infected blood samples.

Gaps and Future Directions

Despite the success of ML-based models, several challenges remain:

- Data Availability: Limited access to high-quality, annotated datasets remains a significant hurdle.
- Generalization Issues: Models trained on specific datasets often struggle to generalize across different populations and image acquisition techniques.
- Integration into Healthcare Systems: Most AI-based diagnostic tools are still in the research phase and require validation for real-world clinical deployment.

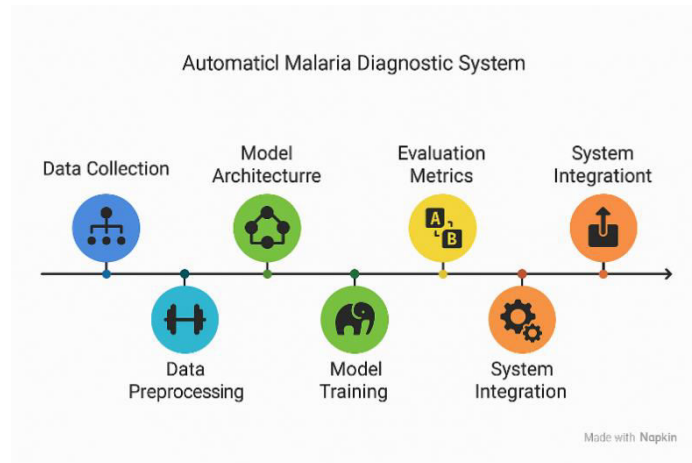


Fig: 1 Automated Malaria Diagnostic System

IV. MALARIA DETECTION USING ML: METHODOLOGY

This study adopts a systematic and organized approach to create an automated diagnostic system for malaria detection using machine learning and deep learning methods. The methodology is based on a well-defined pipeline that includes seven essential steps:

1. Data Collection and Preprocessing

The system starts with a large dataset of blood smear images containing samples of both infected and normal cells. These images are obtained from publicly available medical datasets and hospitals. Preprocessing steps include:

- **Resizing images** to a fixed size for uniform input.
- **Contrast enhancement** to improve visibility of infected regions.
- **Noise removal and normalization** for better feature extraction.

2. Dataset Splitting

To ensure reliable model training and evaluation, the dataset is divided into three subsets:

- **Training Set (80%)** – Used for teaching the model.
- **Validation Set (10%)** – Used to tune hyperparameters and prevent overfitting.
- **Testing Set (10%)** – Used for final evaluation to measure model performance.

This ensures the model learns well without memorizing the data.

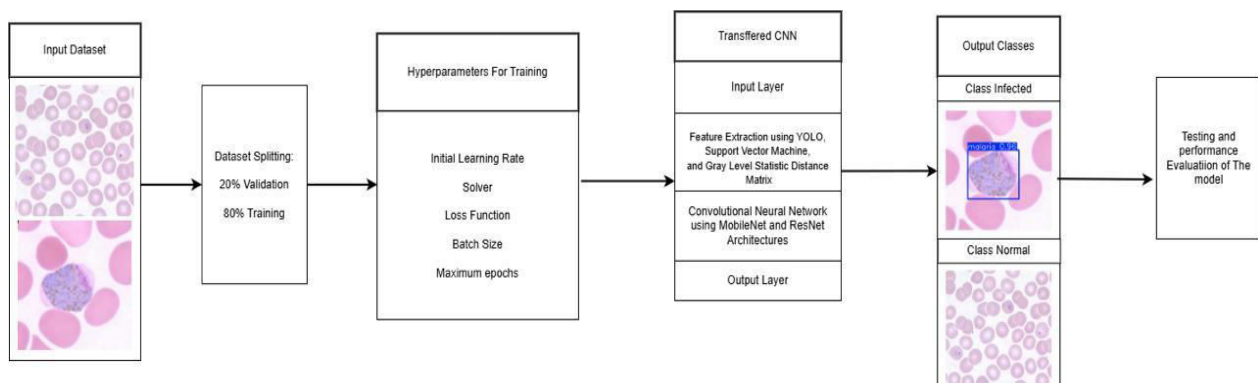


Fig: 2 System Architecture Diagram

3. Hyperparameter Selection and Optimization

Before training, key hyperparameters are set to fine-tune the model's learning process:

- **Initial Learning Rate** – Controls the speed of learning.
- **Optimizer/Solver** – Determines how weights are updated.
- **Loss Function** – Measures the error between predictions and actual labels.
- **Batch Size** – Defines how many images are processed per iteration.
- **Maximum Epochs** – Number of complete passes through the dataset.

Proper selection of these parameters improves model efficiency and prevents overfitting or underfitting.

4. Feature Extraction using AI Models

The system extracts important features from images using advanced AI techniques:

- **YOLO (You Only Look Once)** – Detects infected areas in blood smear images using bounding boxes.
- **Support Vector Machine (SVM)** – Classifies infected vs. normal images based on extracted patterns.
- **Gray Level Statistical Distance Matrix (GLSDM)** – Analyzes texture variations in infected and healthy cells.

These extracted features help CNN-based models differentiate infected and non-infected cells efficiently.

5. Deep Learning Model Training

The extracted features are fed into a Convolutional Neural Network (CNN) for classification. To enhance accuracy, the study utilizes pre-trained deep learning models, including:

- **YOLOv5** – For real-time detection of infected regions.
- **EfficientNet B3** – Known for high accuracy with fewer computations.
- **Inception V3** – Extracts complex hierarchical features from images.
- **VGG16** – A deep CNN architecture used for classification.
- **MobileNet & ResNet** – Lightweight architectures designed for medical image analysis.

Each of these models learns disease-specific features, improving the robustness of the system.

6. Classification and Disease Detection

After training, the model classifies images into two categories:

- **Class Infected** – Blood smear shows malaria or dengue infection.
- **Class Normal** – No signs of infection are detected.

For infected cases, YOLO highlights the affected regions with bounding boxes and a confidence score, assisting doctors in diagnosis.

7. Model Testing and Performance Evaluation

The performance of the trained model is assessed using fresh, previously unseen images to evaluate its effectiveness. Performance metrics include:

Accuracy – Measures overall prediction correctness.

Precision – Percentage of correctly predicted infections.

Recall – Measures how well the model detects actual infections.

F1-Score – Balances precision and recall.

mAP (Mean Average Precision) – Specifically for YOLO, mAP evaluates the precision and recall of object detection by measuring the area under the precision-recall curve. It is calculated as:

$$\text{mAP} = \frac{1}{N} \sum_{i=1}^N \text{AP}_i$$

A higher mAP score indicates better object detection performance, ensuring accurate identification of infected regions in blood smear images.

V. RESULTS

The findings highlight the effectiveness of deep learning models in automating the diagnosis of malaria from blood smear images. Among the evaluated models, YOLO achieved the highest accuracy of 94.7%, outperforming other deep learning architectures. EfficientNet-B3 followed closely with an accuracy of 92.3%, while InceptionV3 and VGG16 achieved 90.14% and 89.4%, respectively. The baseline CNN model recorded an accuracy of 87.2%, indicating the advantage of using advanced architectures for feature extraction and classification.

Compared to traditional diagnostic methods that rely on manual examination, these models provide superior accuracy and scalability. While some misclassifications occurred due to overlapping cells and image noise, the proposed system significantly improves diagnostic efficiency, reduces human dependency, and offers a cost-effective solution for large-scale disease screening.



Fig: 3 Malaria Blood Samples

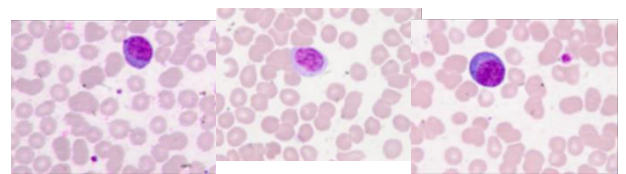


Fig: 4 Normal Blood Samples

Key Contributions and Findings

- **High Accuracy & Robustness** – The deep learning models significantly improved diagnostic accuracy, minimizing human error.
- **Automation & Efficiency** – The proposed system enables real-time disease detection, reducing reliance on trained pathologists.
- **Scalability & Accessibility** – The integration of the model into a web-based platform ensures rapid and remote diagnostics, particularly benefiting resource-limited settings.
- **Comparative Superiority** – The model surpassed traditional SVM and Decision Tree-based classifiers in terms of both accuracy and processing speed.

VI. DISCUSSION

The discussion highlights the advantages of using deep learning for malaria diagnosis, emphasizing improved accuracy, efficiency, and automation. The proposed system reduces reliance on expert pathologists and minimizes errors associated with manual examination. While CNNs, particularly Inception V3, outperformed traditional methods, challenges such as image noise and class imbalance were observed. Integrating advanced preprocessing techniques and expanding the dataset could further enhance model performance. Overall, the system presents a promising approach for real-time, automated disease detection, with potential applications in remote and resource-limited healthcare settings.

VII. CONCLUSION

This research introduces a deep learning-driven diagnostic system for the automated classification of blood smear images to detect malaria. The proposed method utilizes advanced Convolutional Neural Networks (CNNs) and transfer learning models, such as EfficientNet B3, Inception V3, VGG16, and YOLO, to improve the accuracy and efficiency of disease detection. The results highlight that YOLO achieved the highest classification accuracy of 94.7%, outperforming both traditional microscopy-based diagnosis and conventional machine learning approaches. The implementation of this system aims to provide a scalable, cost-effective solution for real-time disease detection, particularly in resource-limited healthcare settings.

VIII. LIMITATIONS AND FUTURE SCOPE**Limitations:**

- **Dataset Diversity** – The existing dataset might not capture all potential variations in blood smear images, which could impact the model's ability to generalize. Increasing the size and diversity of the dataset could help minimize misclassification.
- **Model Interpretability** – While deep learning models achieve high accuracy, their decision-making process remains opaque. Incorporating Explainable AI (XAI) techniques can enhance transparency and trust in clinical applications.
- **Computational Constraints** – Implementing high-performance deep learning models demands substantial computational resources, which could restrict their practical use in environments with limited resources.

Scope for Future Work:

- **Optimized Deployment** – Enhancing model efficiency to reduce hardware dependencies will facilitate its integration into portable diagnostic systems.
- **Multi-Disease Detection** – Expanding the model to classify additional vector-borne diseases, such as chikungunya or Zika virus, will improve its public health impact.

REFERENCES

- [1] D. Sukumarran et al., "Automated Identification of Malaria-Infected Cells and Classification of Human Malaria Parasites Using a Two-Stage Deep Learning Technique," IEEE Access, vol. 12, pp. 135746-135763, 2024. doi: 10.1109/ACCESS.2024.3459411.
- [2] M. O. Faruq Goni et al., "Diagnosis of Malaria Using Double Hidden Layer Extreme Learning Machine Algorithm With CNN Feature Extraction and Parasite Inflator," IEEE Access, vol. 11, pp. 4117-4130, 2023. doi: 10.1109/ACCESS.2023.3234279.
- [3] F. Yang et al., "Deep Learning for Smartphone-Based Malaria Parasite Detection in Thick Blood Smears," IEEE Journal of Biomedical and Health Informatics, vol. 24, no. 5, pp. 1427-1438, May 2020. doi: 10.1109/JBHI.2019.2939121.
- [4] P. A. Pattanaik, M. Mittal, and M. Z. Khan, "Unsupervised Deep Learning CAD Scheme for the Detection of Malaria in Blood Smear Microscopic Images," IEEE Access, vol. 8, pp. 94936-94946, 2020. doi: 10.1109/ACCESS.2020.2996022.
- [5] D. Bibin, M. S. Nair, and P. Punitha, "Malaria Parasite Detection From Peripheral Blood Smear Images Using Deep Belief Networks," IEEE Access, vol. 5, pp. 9099-9108, 2017. doi: 10.1109/ACCESS.2017.2705642.
- [6] A. A. Alonso-Ramírez et al., "Classifying Parasitized and Uninfected Malaria Red Blood Cells Using Convolutional-Recurrent Neural Networks," IEEE Access, vol. 10, pp. 97348-97359, 2022. doi: 10.1109/ACCESS.2022.3206266.
- [7] M. O. Arowolo, M. O. Adebisi, A. A. Adebisi, and O. J. Okesola, "A Hybrid Heuristic Dimensionality Reduction Methods for Classifying Malaria Vector Gene Expression Data," IEEE Access, vol. 8, pp. 182422-182430, 2020. doi: 10.1109/ACCESS.2020.3029234.
- [8] G. Shekar, S. Revathy, and E. K. Goud, "Malaria Detection using Deep Learning," 2020 4th International Conference on Trends in Electronics and Informatics (ICOEI), Tirunelveli, India, 2020, pp. 746-750. doi: 10.1109/ICOEI48184.2020.9143023.
- [9] I. Jdey, G. Hcini, and H. Ltifi, "Deep learning and machine learning for Malaria detection: overview, challenges and future directions," 2022. doi: 10.48550/arXiv.2209.13292.
- [10] "Performance comparison of machine learning algorithms for malaria detection using microscopic images," 2019. [Online]. Available: <https://api.semanticscholar.org/CorpusID:198229946>.
- [11] M. Poostchi, K. Silamut, R. J. Maude, S. Jaeger, and G. Thoma, "Image analysis and machine learning for detecting malaria," Translational Research, vol. 194, pp. 36-55, 2018. doi: 10.1016/j.trsl.2017.12.004.
- [12] K. Chakradeo, S. Titarenko, and M. Delves, "Malaria Parasite Detection Using Deep Learning Methods," 2021. doi: 10.5281/zenodo.4569849.

- [13] Z. Zheng, "The application of automated machine learning in Malaria classification," *Applied and Computational Engineering*, 2024. [Online]. Available: <https://api.semanticscholar.org/CorpusID:268007741>.
- [14] S. Kadiyala, S. Kotecha, and V. Kulkarni, "CNN-Based Deep Learning Approach for Automatic Malaria Parasite Detection," 2022. [Online]. Available: <https://api.semanticscholar.org/CorpusID:252085376>.
- [15] W. Hoyos, J. Aguilar, and M. Toro, "Dengue models based on machine learning techniques: A systematic literature review," *Artificial Intelligence in Medicine*, vol. 119, p. 102157, 2021. doi: 10.1016/j.artmed.2021.102157.
- [16] S. A. A. Balamurugan, M. S. M. Mallick, and G. Chinthana, "Improved prediction of dengue outbreak using combinatorial feature selector and classifier based on entropy weighted score-based optimal ranking," *Informatics in Medicine Unlocked*, vol. 20, p. 100400, 2020. doi: 10.1016/j.imu.2020.100400.
- [17] H. Mayrose et al., "An Explainable Artificial Intelligence Integrated System for Automatic Detection of Dengue From Images of Blood Smears Using Transfer Learning," *IEEE Access*, vol. 12, pp. 41750-41762, 2024. doi: 10.1109/ACCESS.2024.3378516.
- [18] S. Tiruveedhula et al., "Classification of Dengue using Machine Learning Techniques," *International Journal of Engineering & Technology*, vol. 7, p. 212, 2018. doi: 10.14419/ijet.v7i2.32.15570.
- [19] N. J. Riya, M. Chakraborty, and R. Khan, "Artificial Intelligence-Based Early Detection of Dengue Using CBC Data," *IEEE Access*, vol. 12, pp. 112355-112367, 2024. doi: 10.1109/ACCESS.2024.3443299.
- [20] H. Mayrose et al., "Machine Learning-Based Detection of Dengue from Blood Smear Images Utilizing Platelet and Lymphocyte Characteristics," *Diagnostics (Basel)*, vol. 13, no. 2, p. 220, 2023. doi: 10.3390/diagnostics13020220.
- [21] P. Guo et al., "Developing a dengue forecast model using machine learning: A case study in China," *PLOS Neglected Tropical Diseases*, vol. 11, no. 10, p. e0005973, 2017. doi: 10.1371/journal.pntd.0005973.
- [22] T.-S. Ho et al., "Comparing machine learning with case-control models to identify confirmed dengue cases," *PLOS Neglected Tropical Diseases*, vol. 14, no. 11, p. e0008843, 2020. doi: 10.1371/journal.pntd.0008843.
- [23] N. E. Natali, L. M. Babrak, and E. Miho, "Prospective Artificial Intelligence to Dissect the Dengue Immune Response and Discover Therapeutics," *Frontiers in Immunology*, vol. 12, p. 574411, 2021. doi: 10.3389/fimmu.2021.574411.
- [24] S.-W. Huang et al., "Assessing the risk of dengue severity using demographic information and laboratory test results with machine learning," *PLOS Neglected Tropical Diseases*, vol. 14, no. 12, p. e0008960, 2020. doi: 10.1371/journal.pntd.0008960.
- [25] S. Amin et al., "Recurrent Neural Networks With TF-IDF Embedding Technique for Detection and Classification in Tweets of Dengue Disease," *IEEE Access*, vol. 8, pp. 131522-131533, 2020. doi: 10.1109/ACCESS.2020.3009058.



INTERNATIONAL
STANDARD
SERIAL
NUMBER
INDIA



INTERNATIONAL JOURNAL OF INNOVATIVE RESEARCH

IN SCIENCE | ENGINEERING | TECHNOLOGY

 9940 572 462  6381 907 438  ijirset@gmail.com



www.ijirset.com

Scan to save the contact details