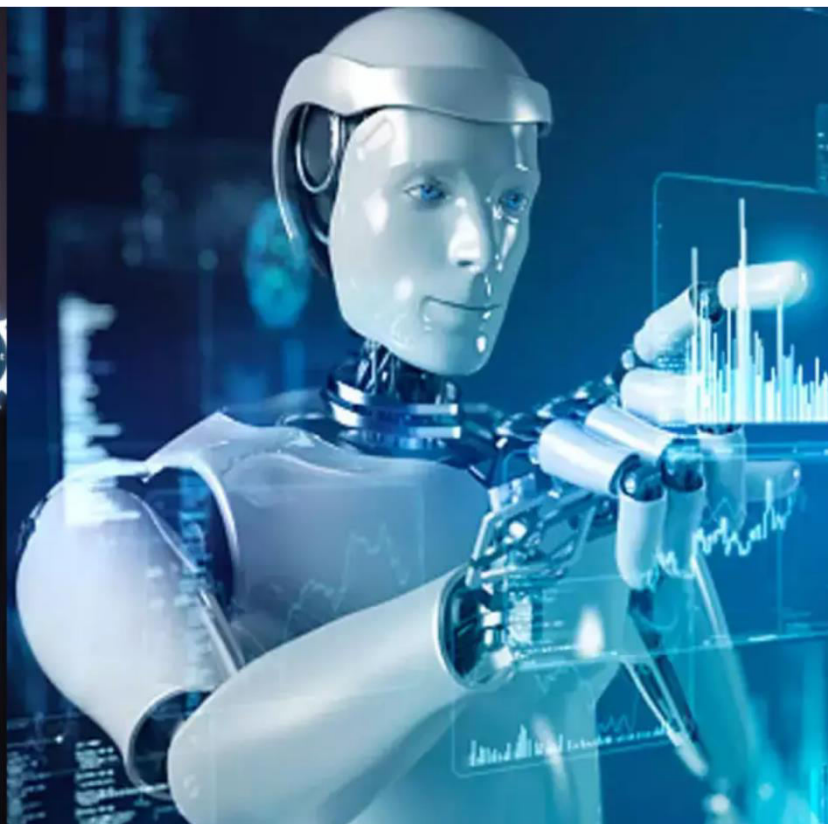




# International Journal of Innovative Research in Science Engineering and Technology (IJIRSET)

*(A Monthly, Peer Reviewed, Refereed, Scholarly Indexed, Open Access Journal)*



**Impact Factor: 8.699**

**Volume 14, Issue 5, May 2025**

# **Implementing an Intelligent Traffic Control System for Congestion Control, Ambulance Clearance and Stolen Vehicle Detection**

**Archana Yadav<sup>1</sup>, Motupalli Sri Vignesh<sup>2</sup>, Pulishetty Sathwika Laxmi<sup>3</sup>, Farhaan Mohiuddin<sup>4</sup>**

Assistant professor, Department of E.C.E, Mahatma Gandhi Institute of Technology, Gandipet, Hyderabad, India<sup>1</sup>

Department of E.C.E, Mahatma Gandhi Institute of Technology, Gandipet, Hyderabad, India<sup>2,3,4</sup>

**ABSTRACT:** In this project, an intelligent traffic control system is developed to address urban challenges such as congestion control, ambulance clearance, and stolen vehicle detection. The system integrates Arduino Uno, ESP8266 Wi-Fi module, EM-18 RFID reader, and IR sensors to create a smart traffic management framework. Traffic density at intersections is monitored using IR sensors, allowing dynamic signal timing to reduce congestion. Ambulance clearance is prioritized through RFID detection, automatically providing a green corridor for emergency vehicles. Stolen vehicles are identified using RFID tags, with real-time alerts generated through an ESP8266-based server. LEDs simulate traffic signals, and a web server provides live updates on traffic status and vehicle detections. This low-cost, scalable solution aims to enhance traffic flow efficiency, ensure faster emergency response, and improve public safety in urban environments.

**KEYWORDS:** Intelligent Traffic System, Congestion Control, Ambulance Clearance, Stolen Vehicle Detection, Arduino Uno, ESP8266, RFID, IR Sensors, IoT-based Traffic Management.

## **I. INTRODUCTION**

Urbanization and rapid population growth have led to a significant increase in traffic congestion, posing major challenges to transportation systems worldwide. Traditional traffic control mechanisms, based on static timing cycles, are inefficient in adapting to real-time traffic demands, often resulting in unnecessary delays and congestion. Moreover, the need for emergency vehicle prioritization and vehicle security has become crucial for ensuring public safety and effective urban management. This project presents an intelligent traffic control system designed to dynamically manage traffic flow, clear paths for ambulances, and detect stolen vehicles in real-time. By leveraging a combination of IR sensors for congestion monitoring, RFID technology for ambulance and stolen vehicle detection, and IoT communication through ESP8266, the system offers a comprehensive solution to modern traffic problems. Arduino Uno serves as the main controller, processing real-time data from the sensors and actuators, while an ESP8266 module hosts a web server to provide live updates regarding traffic status and alerts. LED's are used to simulate traffic signals at intersections, dynamically adjusting their states based on sensor inputs. The system not only reduces traffic congestion by prioritizing densely populated lanes but also ensures quick and efficient ambulance movement by altering signal patterns in real time. Additionally, stolen vehicles equipped with RFID tags are automatically detected, and instant alerts are generated to the authorities via the online server. Through this project, we aim to contribute toward building smarter, safer, and more efficient cities, leveraging affordable and accessible technologies.



## II. DESIGN METHODOLOGY

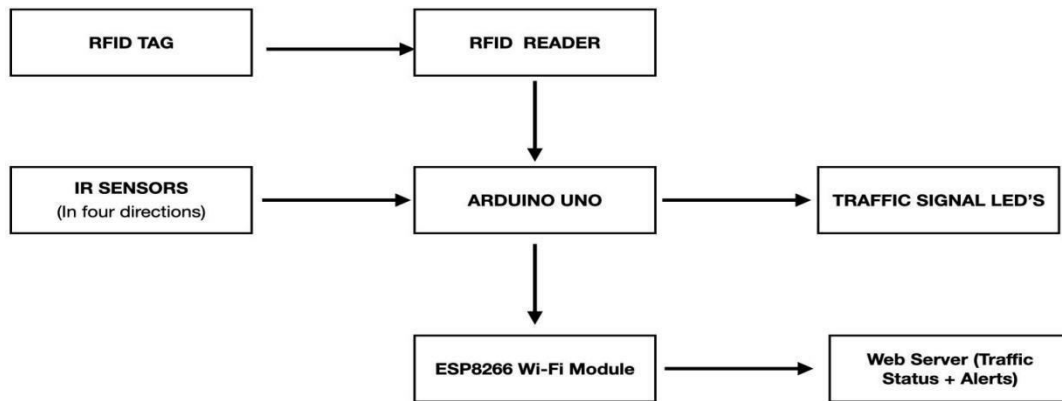


Fig 3.0 Block diagram of intelligent traffic control system for congestion control, ambulance clearance and stolen vehicle detection.

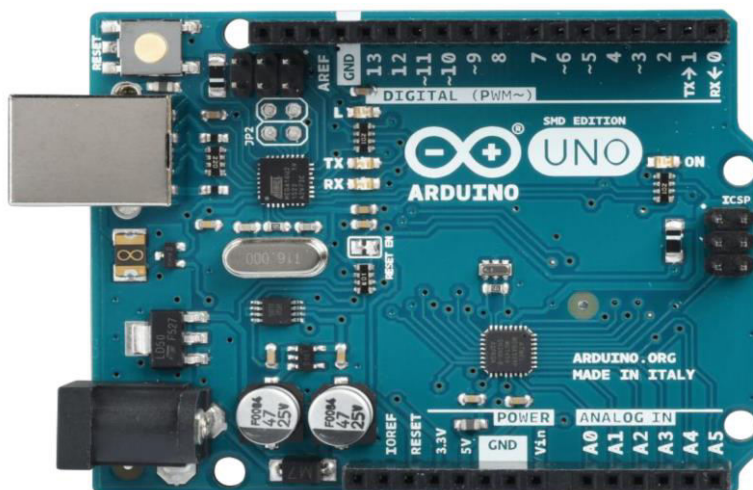


Fig 2.1 Arduino uno

The proposed intelligent traffic control system integrates multiple modules to address real-time urban traffic challenges effectively. The overall design is centered around the Arduino Uno, which acts as the primary processing unit for traffic density analysis, ambulance clearance, and stolen vehicle detection.

### Traffic Density Monitoring

IR sensors are placed at each traffic lane to detect the vehicle count or traffic density. The sensors send signals to the Arduino Uno, which dynamically adjusts the duration of the green signals based on the traffic load, thus minimizing congestion and waiting time at intersections.

### Ambulance Clearance Mechanism

Ambulances are equipped with RFID tags. When an RFID tag assigned to an ambulance is detected at a junction by the EM-18 RFID Reader, the Arduino Uno immediately overrides the normal signal cycle to turn the traffic light green in the ambulance's direction, ensuring a clear path for emergency services.

**Stolen Vehicle Detection**

Vehicles suspected to be stolen are pre-registered with specific RFID codes. Upon detection by the RFID reader, the system flags the event, and the ESP8266 Wi-Fi module updates the live server with a notification, allowing authorities to take timely action.

**Wireless Communication**

The ESP8266 module is programmed to create a local web server that displays real-time traffic status, including traffic density on each side and alerts about any detected stolen vehicles. This interface provides an accessible monitoring tool for operators and law enforcement agencies.

**Signal Control using LED's**

LED's are used to simulate real-world traffic signals. Based on inputs from IR sensors and RFID readers, the Arduino dynamically controls the LED's to represent real-time traffic flow and emergency vehicle priority.

**III. IMPLEMENTATION**

The intelligent traffic control system is realized by carefully integrating hardware components with appropriate software programming. The system consists of sensors, controllers, wireless communication modules, and actuators, all orchestrated to achieve dynamic traffic management, ambulance clearance, and stolen vehicle detection.

**Components Use**

- **Arduino Uno:** Acts as the main micro-controller, handling sensor inputs and controlling outputs.
- **ESP8266 Wi-Fi Module:** Provides wireless communication to a web server for real-time monitoring.
- **EM-18 RFID Reader Module:** Detects RFID tags associated with ambulances and stolen vehicles.
- **RFID Tags:** Pre-programmed to identify emergency vehicles and flagged vehicles.
- **IR Sensors:** Monitor vehicle density at each intersection lane.
- **LED's:** Simulate the functioning of real-world traffic signals.
- **Power Supply Module:** Regulates voltage and current to the circuit components.

**Circuit Description**

The IR sensors are installed at four entry points (North, South, East, West) to monitor vehicle presence. Each sensor is connected to the Arduino Uno, transmitting binary data indicating vehicle detection.

The EM-18 RFID reader is connected to the Arduino Uno to read unique RFID tags. When an ambulance RFID is detected, the system triggers an immediate green signal for the ambulance direction. If a stolen vehicle RFID is detected, a warning is sent via the ESP8266 to the server.

LED's positioned at each lane simulate the real-world traffic signals, changing states based on sensor data and special event triggers (ambulance, stolen vehicle).

**Software and Programming**

The Arduino Uno is programmed using the Arduino IDE.

- IR sensor data is polled continuously to adjust the signal timing dynamically.
- RFID tag data is checked to prioritize ambulances and detect stolen vehicles.
- The ESP8266 module is programmed using Arduino C. It hosts a web server displaying real-time traffic updates.

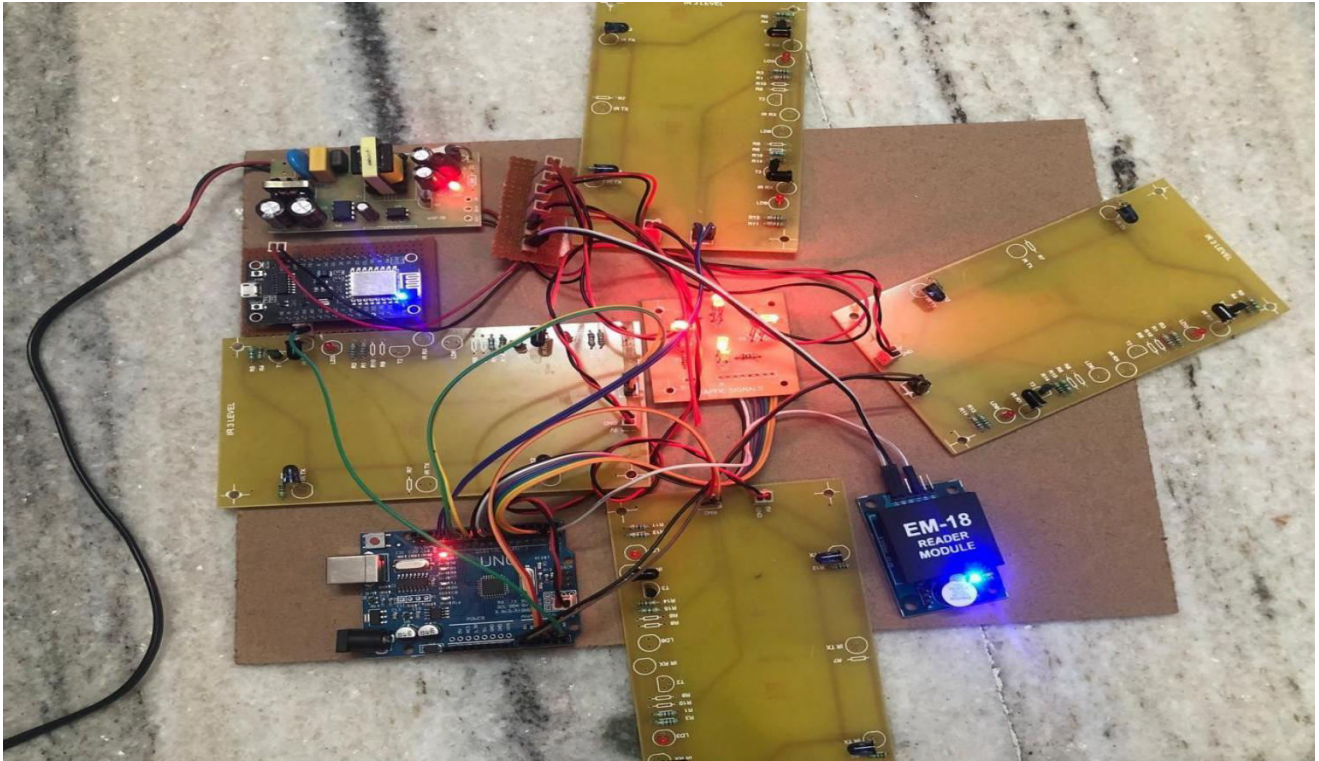


Fig 3.1 Circuit of the intelligent traffic control system

The following core logic snippets illustrate how key functionalities were implemented in the Arduino program:

**//Traffic Density Logic (Example: East)**

```
if (digitalRead(E1)&&digitalRead(E2)) {
  digitalWrite(EG, LOW);
  digitalWrite(ER, HIGH);
  delay(3000);
}
```

**// Ambulance Detection via RFID**

```
if (inputString.equals("5500C088C5D8")) {
  digitalWrite(EG, LOW);
  digitalWrite(ER, HIGH);
  delay(5000);
}
```

**// Stolen Vehicle Detection**

```
if (inputString.equals("5500C030892C")) {
  Serial.print("Stolen Vehicle");
}
```

**// Web Interface HTML Output**

```
IOTSerial.print("*<meta http-equiv=\"refresh\" content = \"3\"><h1 style=\"color:red;text-align:center\">DENSITY  
BASED</h1><h1 style=\"color:red;text-align:center\">TRAFFIC CONTROL SYSTEM</h1>");
IOTSerial.print("<h2 style=\"color:red;text-align:center\">ID:HYD/500072/NODE2</h2>");
if (e3 == 1)
  IOTSerial.print("<h2 style=\"color:red;text-align:center\">EAST:HIGH</h2>");
```

**Web Server Interface**

The ESP8266 module serves a lightweight web page accessible via a local IP address. The web page <http://192.168.4.1> displays:

- Current traffic status for all directions (Clear, Low, High).
- Stolen vehicle detection alerts (e.g., "TS07AB7777 Stolen Vehicle Found").

**IV. RESULTS**

The intelligent traffic control system was successfully implemented and tested under various real-time scenarios. The integration of IR sensors, RFID technology, and wireless communication through ESP8266 enabled efficient traffic management, ambulance clearance, and stolen vehicle detection.

**Traffic Congestion Control**

The IR sensors installed at each intersection lane were able to detect the density of vehicles accurately.

- When traffic density increased in a particular direction, the Arduino Uno dynamically extended the green signal duration for that lane to allow smooth traffic flow.
- In low-density conditions, the green signal time was shortened, ensuring optimized traffic management.
- LED's, representing the traffic lights, switched appropriately between red, green, and yellow states based on real-time traffic data.

**Ambulance Clearance**

An RFID tag assigned to an ambulance was detected by the EM-18 RFID reader. Upon detection:

- The Arduino Uno immediately prioritized the ambulance lane by turning the corresponding traffic light to green.
- Other directions were temporarily halted to provide an uninterrupted passage for the ambulance.
- This ensured minimal response time for emergency services, enhancing the effectiveness of urban health systems.

**Stolen Vehicle Detection**

Vehicles flagged as stolen were assigned special RFID tags. When a stolen vehicle RFID tag was read:

- The system generated a real-time alert through the ESP8266 server.
- The stolen vehicle information, including identification, was instantly displayed on the web server interface, enabling quick action by authorities.

**Web Server Monitoring**

A web server was hosted using the ESP8266 module to provide a live view of the traffic conditions and special alerts:

- Traffic status was updated in real time for North, South, East, and West lanes (Clear, Low, High density).
- Stolen vehicle detection messages were prominently displayed on the dashboard.



Volume 14, Issue 5, May 2025

|DOI: 10.15680/IJIRSET.2025.1405276|

6:15

48%

**DENSITY BASED  
TRAFFIC CONTROL SYSTEM**

ID:HYD/500072/NODE2

EAST: CLEAR

WEST: LOW

NORTH: HIGH

SOUTH: CLEAR

TS07AB7777 Stolen Vehicle Found



Fig 4.1 Web interface showing traffic density difference and a stolen vehicle detected.

**V. CONCLUSION**

The intelligent traffic control system built in this project shows how technology can solve important problems in today's cities. By using simple and affordable components like Arduino Uno, IR sensors, RFID modules, and the ESP8266 Wi-Fi module, we were able to design a system that controls traffic lights based on real-time traffic, clears the way for ambulances, and detects stolen vehicles.

The IR sensors helped manage traffic by changing the signal timings depending on how many vehicles were present on each road. This helped reduce traffic jams and made the movement of vehicles smoother. Ambulance clearance was made easy by using RFID tags — when the system detected an ambulance nearby, it automatically turned the traffic signal green in the ambulance's direction, saving important time during emergencies. Similarly, the system could also detect stolen vehicles and immediately send an alert through the server, helping law enforcement respond quickly.

The web server created using the ESP8266 showed live updates about traffic conditions and stolen vehicle alerts, making the system transparent and easy to monitor. Overall, this project proved that with simple hardware and good programming, we can create smart solutions to improve transportation systems.

Even though the system demonstrated promising results, there are several opportunities for further enhancement. Future developments may include integrating GPS tracking for precise vehicle location, applying machine learning algorithms to predict traffic patterns more accurately, and developing mobile applications to provide real-time traffic updates to users. These advancements would significantly strengthen the system's capabilities, moving closer to the goal of building intelligent, safer, and more efficient urban transportation networks.

## **VI. FUTURE SCOPE**

The intelligent traffic control system developed in this project holds significant potential for future enhancements and real-world scalability. One of the key areas for improvement is the integration of GPS and GIS technologies to enable real-time tracking of ambulances and stolen vehicles. This would allow dynamic rerouting, providing faster emergency response times and improving overall system intelligence. Additionally, a dedicated mobile application could be developed to provide live traffic updates, stolen vehicle alerts, and suggested alternate routes for commuters and authorities alike, making the system more accessible and user-friendly.

Future work can also explore the incorporation of machine learning algorithms to predict traffic congestion based on historical and real-time data, optimizing traffic flow proactively rather than reactively. Integrating computer vision technologies through CCTV cameras would further enhance system accuracy by enabling license plate recognition, vehicle classification, and detection of abnormal activities without relying solely on RFID technology. Furthermore, expanding the RFID detection network city-wide and introducing Vehicle-to-Everything (V2X) communication can pave the way for smarter, more connected urban traffic systems.

Another important dimension is the use of renewable energy sources such as solar panels to power traffic control units, promoting sustainability and reducing environmental impact. Enhancing the system with automatic notifications to hospitals, police stations, and emergency services when ambulances or stolen vehicles are detected would significantly improve urban emergency response operations. Incorporating adaptive signal control technology (ASCT) could allow for dynamic coordination of multiple intersections, ensuring optimal traffic management on a larger scale.

Storing real-time traffic and event data in the cloud would open up possibilities for extensive traffic behavior analysis, supporting smart city planning and infrastructure development. Finally, given the critical nature of IoT-based traffic systems, implementing robust cybersecurity measures is vital to safeguard data transmission and prevent unauthorized access. Through these future enhancements, the system can evolve into a comprehensive, intelligent transportation framework that significantly improves urban mobility, safety, and efficiency.

## **REFERENCES**

1. P. Patil and P. Bhole, "Traffic Congestion Detection and Control using Internet of Things (IoT)," International Research Journal of Engineering and Technology (IRJET), Volume 6, Issue 3, March 2019.
2. S. Sharma and A. K. Sharma, "RFID Based Intelligent Traffic Management System for Ambulance Clearance," International Journal of Computer Applications (IJCA), Volume 97, No. 3, July 2014.
3. B. Pawar, S. Deokar, and P. Bagal, "Real-Time Traffic Management System Using Arduino and IR Sensors," International Journal of Innovative Research in Computer and Communication Engineering (IJIRCCE), Volume 5, Issue 4, April 2017.
4. M. A. Khan, F. Anwar, and A. Mahmood, "IoT-Based Smart Traffic Signal Monitoring System," International Conference on Emerging Technologies (ICET), 2019.
5. T. P. Kothari and M. Joshi, "Design and Implementation of Smart Traffic Control System Using Arduino and ESP8266," International Journal of Scientific Research in Science, Engineering and Technology (IJSRSET), Volume 4, Issue 3, 2018.





INTERNATIONAL  
STANDARD  
SERIAL  
NUMBER  
INDIA



# INTERNATIONAL JOURNAL OF INNOVATIVE RESEARCH

IN SCIENCE | ENGINEERING | TECHNOLOGY

 9940 572 462  6381 907 438  [ijirset@gmail.com](mailto:ijirset@gmail.com)



[www.ijirset.com](http://www.ijirset.com)

Scan to save the contact details