



# International Journal of Innovative Research in Science Engineering and Technology (IJIRSET)

*(A Monthly, Peer Reviewed, Refereed, Scholarly Indexed, Open Access Journal)*



**Impact Factor: 8.699**

**Volume 14, Issue 5, May 2025**

# Personal Healthcare Chatbot for Diseases Prediction using Machine Learning

R. Ponmayil, R. Vaishnavi

Assistant Professor, Department of Computer Application, Vivekanandha Institute of Information and Management  
Studies, Tiruchengode, Tamil Nadu, India

Master of Computer Applications, Vivekanandha Institute of Information and Management Studies, Tiruchengode,  
Tamil Nadu, India

**ABSTRACT:** Chatbot is a computer program that simulates and processes human conversation in text format allowing humans to interact with digital devices as if they were communicating with a real person. NLP (Natural language Processing) and AI (Artificial intelligence) are new emerging technologies that can be utilized to improve the capacity of Chatbot to stimulate a more natural and free-flowing conversation. Medical Chatbot are conversational AI powered tools that facilitate communication between patients, insurance providers, and healthcare professionals. By traversing the decision tree based on user inputs, the chatbot can identify the most likely diagnosis, facilitating accurate and efficient symptom analysis.

## I. INTRODUCTION

The Python Chatbot program serves a multifaceted purpose, functioning as an instructive, interactive, and customizable tool for showcasing the potential of natural language processing (NLP) and machine learning in Chatbot development. At its core, it is an educational resource, providing a practical demonstration of how chatbots can be constructed using readily available libraries and techniques. By using NLP and TF-IDF vectorization, the program demonstrates how textual data can be processed and utilized for understanding user input, making it an ideal starting point for those interested in delving into the world of chatbot development and language understanding.

The program's adaptability is a pivotal attribute, allowing users to customize its behavior. Users can effortlessly add new intents, patterns, and responses to tailor the chatbot's conversational abilities to specific usecases, industries, or domains. This versatility is particularly beneficial for businesses and organizations seeking to create chatbots that cater to their unique needs, whether it's for answering customer inquiries, providing technical support, or delivering information about products and services.

Moreover, the integration with Streamlit, a Python framework for building web applications, enables the program to offer a straightforward and user-friendly chat interface. Users can initiate conversations by simply typing their messages, which fosters an accessible and intuitive interaction experience. Ultimately, the chatbot program functions as a tangible showcase of artificial intelligence and machine learning applications, illustrating how computers can learn to understand and respond to human language.

## II. OBJECTIVES

The primary objective of this project is to develop an intelligent, AI-powered healthcare chatbot capable of interacting with users in natural language to collect information about their symptoms and provide preliminary diagnostic suggestions. The system aims to leverage machine learning algorithms to analyze the input data and predict possible health conditions, helping users make informed decisions about their well-being. A key goal is to enhance accessibility to basic healthcare guidance, particularly for individuals in remote or underserved areas who may not have immediate access to medical professionals. By offering instant responses and 24/7 availability, the chatbot also helps reduce the burden on healthcare systems by managing non-emergency cases effectively. Additionally, the project seeks to build a user-friendly interface that promotes smooth and intuitive communication. Over time, the chatbot is expected to improve its diagnostic accuracy by learning from user interactions and expanding its knowledge base. Finally, ensuring



the security and confidentiality of user data is an essential objective, as the system will handle sensitive personal health information.

### III. LITERATURE SURVEY

The integration of artificial intelligence, particularly machine learning and natural language processing (NLP), into healthcare has gained significant momentum in recent years. A variety of research works and technological solutions have explored the application of chatbots for preliminary diagnosis, patient engagement, and healthcare information dissemination. Studies show that healthcare chatbots like Ada Health, Babylon Health, and the WebMD Symptom Checker are widely used for basic symptom assessment. These platforms often rely on rule-based systems, where responses are predefined and the chatbot follows a fixed decision tree logic. While these systems are helpful, they lack the flexibility and learning capability of machine learning-based models.

Recent advancements in machine learning, particularly supervised learning algorithms such as Decision Trees, Naïve Bayes, Random Forest, and Support Vector Machines (SVM), have demonstrated high accuracy in disease prediction and medical data classification. These algorithms learn patterns from historical patient data and can predict potential diseases based on symptom input. Moreover, deep learning models, such as neural networks and recurrent neural networks (RNNs), have shown promise in understanding complex medical datasets and patient records.

Natural Language Processing (NLP) has also played a crucial role in enhancing chatbot intelligence. With tools like Rasa, spaCy, and pre-trained models like BERT (Bidirectional Encoder Representations from Transformers), chatbots can now better understand and interpret user input in a conversational context. Research highlights the importance of context awareness, sentiment analysis, and intent recognition in delivering meaningful and accurate responses to users. However, many existing systems still struggle with multi-language support, slang, incomplete symptom descriptions, and user privacy concerns.

Furthermore, studies emphasize the growing need for digital healthcare tools in remote and underserved regions, where access to professional medical advice is limited. The COVID-19 pandemic accelerated the adoption of AI-driven virtual assistants for telehealth and symptom screening, further validating the relevance of machine learning-based diagnostic tools. Despite this progress, challenges remain, such as ensuring clinical accuracy, gaining user trust, maintaining data security, and integrating these tools within existing healthcare infrastructures.

In summary, the literature indicates a strong foundation for developing a personal healthcare chatbot using machine learning. While existing systems provide valuable insights and capabilities, there is a clear opportunity to enhance them with adaptive learning, personalized interactions, and secure, user-friendly designs that can deliver more accurate and accessible healthcare support.

### IV. EXISTING SYSTEM

Currently, several healthcare applications and platforms provide symptom-checking features through rule-based or semi-intelligent chatbot systems. Examples include WebMD Symptom Checker, Ada Health, Babylon Health, and Your.MD. These systems allow users to input symptoms and receive suggestions for possible health conditions, along with basic advice on whether to seek medical attention. Most of these platforms rely on predefined symptom-disease mappings and follow a decision-tree logic that guides users through a structured questionnaire. While useful for general information, they do not adapt or learn from user inputs over time. Some advanced systems, such as IBM Watson Health, leverage AI capabilities but are designed primarily for hospital and research environments rather than public access. These systems often require significant infrastructure and professional oversight. Furthermore, while many of these tools include NLP components for understanding user inputs, they lack deep contextual understanding and struggle with vague or non-standard inputs, limiting their effectiveness in real-world use.

### V. PROPOSED SYSTEM

The proposed system is an intelligent healthcare chatbot designed to provide preliminary medical diagnoses using machine learning algorithms and natural language processing (NLP). Unlike traditional rule-based systems, this chatbot

uses a trained machine learning model to analyze user-described symptoms and predict possible diseases. The system begins with a user-friendly conversational interface where users can input their symptoms in natural language. These inputs are processed using NLP to extract relevant features, which are then passed to a machine learning model trained on medical datasets. Based on the symptoms provided, the system predicts the most likely health conditions and offers guidance on whether professional medical attention is needed. Additionally, the system includes a user profile management feature that stores historical symptom data, allowing the chatbot to offer personalized advice over time. The platform is accessible through both web and mobile applications and is designed to continuously learn from user interactions, improving its accuracy and reliability. Data security and privacy measures are implemented to ensure the safe handling of sensitive user health information.

#### ADVANTAGES:

- └ Provides 24/7 instant medical guidance and symptom analysis.
- └ Uses machine learning for more accurate and adaptable diagnosis.
- └ Offers a conversational and user-friendly interface.
- └ Reduces the burden on healthcare facilities by filtering non-emergency cases.
- └ Enhances healthcare access for people in remote or underserved areas.
- └ Learns from user interactions to improve over time.
- └ Maintains user profiles for personalized health advice.
- └ Can be deployed across multiple platforms (web, mobile).
- └ Ensures data privacy and user confidentiality through secure handling practices.
- └ Cost-effective and scalable healthcare solution.

#### VI. METHODOLOGIES

The development of the personal healthcare chatbot follows a structured methodology involving several key stages. The process begins with **data collection**, where medical datasets containing symptom-disease relationships are gathered from reliable sources such as public healthcare repositories or Kaggle. This data is then subjected to **preprocessing**, which includes tasks such as cleaning, normalization, removal of irrelevant or duplicate entries, and converting categorical data into numerical format where required. Following this, **Natural Language Processing (NLP)** techniques are used to analyze user input by extracting key terms and mapping them to known symptoms using tokenization, stop-word removal, and named entity recognition. The cleaned and structured data is then used to **train a machine learning model**—such as Naïve Bayes, Decision Tree, or Random Forest—which is evaluated using performance metrics like accuracy, precision, and recall. Once trained, the model is integrated into the chatbot system. The **chatbot interface** is developed using Python-based frameworks (like Flask or Django) and NLP libraries (like Rasa or spaCy), allowing real-time communication with users. The final step involves **system integration and testing**, ensuring the modules work together seamlessly and the chatbot delivers relevant, context-aware medical suggestions. Continuous improvement is enabled through user feedback and performance monitoring.

#### MODULES

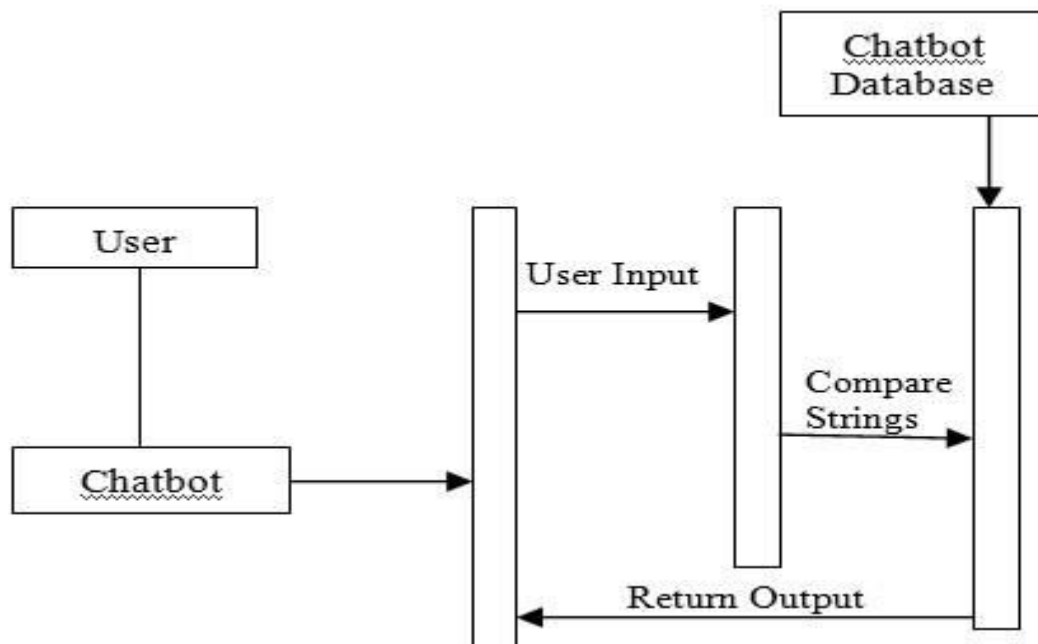
- User Interface Module – Provides a chat-based interface for user interaction via web or mobile platforms.
- NLP (Natural Language Processing) Module – Processes and interprets user symptom input in natural language.
- Symptom Extraction Module – Identifies and extracts key symptoms from user input.
- Machine Learning Diagnosis Module – Predicts possible diseases based on symptom analysis using trained ML models.
- User Profile & History Module – Stores user data, including past interactions, to provide personalized suggestions.
- Database Management Module – Handles storage and retrieval of medical data, symptom-disease mappings, and user records.
- API Integration Module – Connects different modules and allows integration with external services or medical databases.
- Security & Privacy Module – Ensures data encryption, user authentication, and privacy of sensitive health information.

## MODULE DESCRIPTION

The **User Interface Module** serves as the front-end interaction point, allowing users to communicate with the chatbot seamlessly via a web or mobile application. This module ensures that user inputs are captured in natural language and displays chatbot responses in a clear and user-friendly manner. The **Natural Language Processing (NLP) Module** is responsible for interpreting the user's textual input by performing tasks such as tokenization, parsing, intent recognition, and entity extraction to identify relevant symptoms and context. Extracted symptoms are then passed to the **Symptom Extraction Module**, which refines and structures the input data by filtering out irrelevant information and mapping user-described symptoms to a predefined symptom set. The core intelligence of the system lies within the **Machine Learning Diagnosis Module**, where a trained ML model analyzes the structured symptom data to predict possible diseases or health conditions based on patterns learned from historical medical datasets.

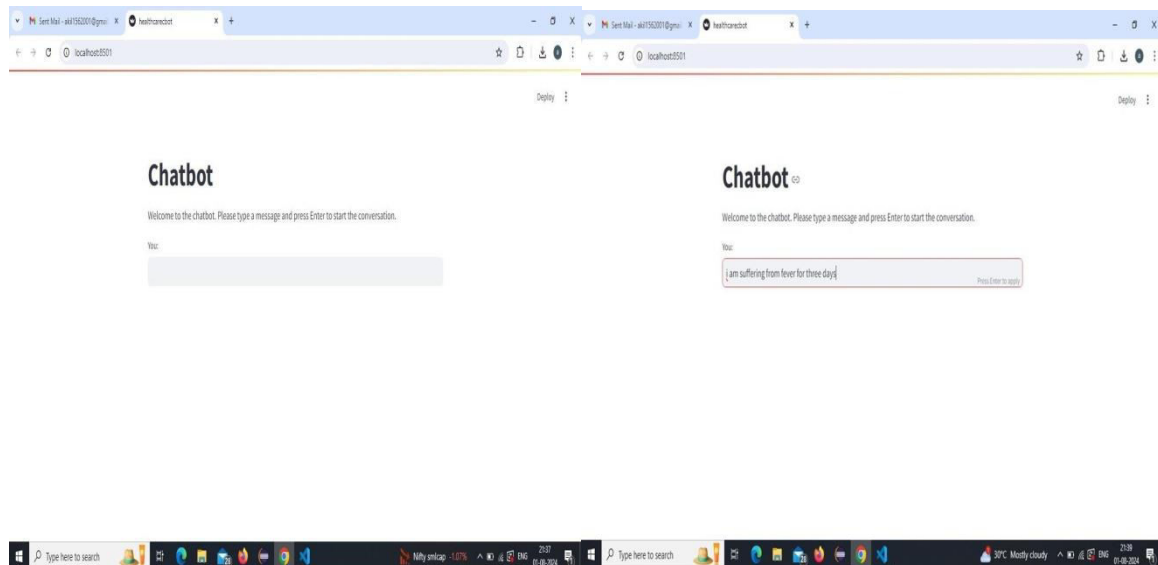
To enhance user experience and personalize responses, the **User Profile & History Module** stores past interaction data, symptom history, and user preferences, enabling the chatbot to provide tailored advice and track recurring symptoms over time. The **Database Management Module** manages the storage and retrieval of all medical data, user profiles, symptom-disease mappings, and conversation logs securely and efficiently. Communication between these modules and external services is facilitated by the **API Integration Module**, which ensures smooth data flow and enables future scalability or connectivity with healthcare providers and medical databases. Finally, the **Security & Privacy Module** is essential for protecting sensitive user data by implementing encryption, secure user authentication, and compliance with healthcare data privacy standards, thereby maintaining user trust and confidentiality throughout the system.

## SYSTEM ARCHITECTURE:

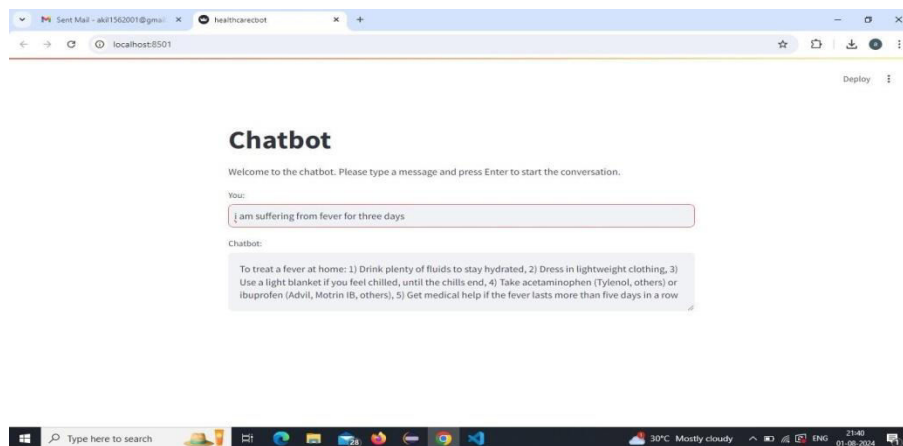


## VII. EXPERIMENTAL RESULT

### A)WELCOME PAGE,B) INPUT THE USER DATA:



### C) OUTPUT IMAGE:



## VIII. CONCLUSION

This project helps us in determining the disease of a patient just by analysing the symptoms the patient has with some symptoms. It also helped us in analysing the data so as to predict what algorithms are giving more accurate results. It also helps in categorizing the symptoms and helps in analysing and modifying the dataset as per the needs of the model and algorithms to predict. In the future, we can add a user interface where the user can add all the symptoms manually or by voice recognition so that the model can predict the disease at ease just by telling the symptoms. The model can also be trained in such a way that it can also show the other related symptoms pertaining to the most favourable disease.

## IX. FUTURE ENHANCEMEN

Future improvements to the healthcare chatbot can include integration with wearable devices to gather real-time health data such as heart rate and activity levels, enhancing the accuracy of diagnoses. Expanding multilingual support will

allow users from diverse linguistic backgrounds to access the system easily. Incorporating advanced deep learning models can improve the chatbot's understanding of complex symptoms and medical histories, boosting diagnostic precision. Adding voice recognition and speech output features would enable hands-free interaction, making the system more accessible. An emergency alert system could detect critical symptoms and recommend immediate medical help or connect users with healthcare providers. Finally, involving medical professionals in validating the chatbot's suggestions will enhance reliability and user trust, ensuring the chatbot evolves into a more dependable digital health assistant.

## REFERENCES

- [1] Hiba Hussain<sup>1</sup>, Komal Aswani<sup>2</sup>, Mahima Gupta<sup>3</sup>, Dr. G.T.Thampi<sup>4</sup>, "Implementation of Disease Prediction Chatbot and Report Analyzer using the Concepts of NLP, Machine Learning and OCR," IRJET, Apr 2020.
- [2] Oh, K.-J., D. Lee, B. Ko, and H.-J. Choi, A chatbot for psychiatric counseling in mental healthcare service based on emotional dialogue analysis and sentence generation. In 2017 18th IEEE International Conference on Mobile Data Management (MDM). IEEE, 2017.
- [3] Kowatsch, T., M. Nißen, C.-H. I. Shih, D. Rüegger, D. Volland, A. Filler, F. Künzler, F. Barata, D. Büchter, B. Brogle, et al. (2017). Text-based healthcare chatbots supporting patient and health professional teams: preliminary results of a randomized controlled trial on childhood obesity.
- [4] Lin Ni(B), Chenhao Lu, Niu Liu, and Jiamou Liu, "MANDY: Towards a Smart Primary Care Chatbot Application", SPRINGER, 2017.
- [5] Divya, S., V. Indumathi, S. Ishwarya, M. Priyasankari, and S. K. Devi (2018). A self-diagnosis medical chatbot using artificial intelligence. Journal of Web Development and Web Designing, 3(1), 1–
- [6] Chung, K. and R. C. Park (2019). Chatbot-based healthcare service with a knowledge base for cloud computing. Cluster Computing, 22(1), 1925–1937.

## WEBSITE REFERENCES

- **Ada Health – AI-powered symptom assessment chatbot**
- <https://ada.com/>
- **Babylon Health – Digital health service with symptom checker and chatbot**
- <https://www.babylonhealth.com/>
- **WebMD Symptom Checker – Popular symptom checking tool with chatbot features**
- <https://symptoms.webmd.com/>
- **Rasa – Open source conversational AI framework for building chatbots**
- <https://rasa.com/>
- **IBM Watson Health – AI and machine learning applications in healthcare**
- <https://www.ibm.com/watson-health>
- **Kaggle Datasets (Healthcare) – Medical datasets for machine learning training**
- <https://www.kaggle.com/datasets?search=healthcare>
- **spaCy NLP library – For natural language processing in Python**
- <https://spacy.io/>





INTERNATIONAL  
STANDARD  
SERIAL  
NUMBER  
INDIA



# INTERNATIONAL JOURNAL OF INNOVATIVE RESEARCH

IN SCIENCE | ENGINEERING | TECHNOLOGY

 9940 572 462  6381 907 438  [ijirset@gmail.com](mailto:ijirset@gmail.com)



[www.ijirset.com](http://www.ijirset.com)

Scan to save the contact details