



International Journal of Innovative Research in Science Engineering and Technology (IJIRSET)

(A Monthly, Peer Reviewed, Refereed, Scholarly Indexed, Open Access Journal)



Impact Factor: 8.699

Volume 14, Issue 5, May 2025

Enhanced Crop Management and Optimization of Yield in Precision Agriculture

Krishna Reddy K R, Deepika G R, Kavana C, Pallavi P G

Professor & Head, Department of Computer Science, S.J.M.I.T, Chitradurga, Karnataka, India

BE, 8th semester, Department of Computer Science, SJMIT, Chitradurga, Karnataka, India

BE, 8th semester, Department of Computer Science, SJMIT, Chitradurga, Karnataka, India

ABSTRACT: India is the land of agriculture and is among the top three global producers of many crops. The Indian farmer lies at the heart of the agricultural sector yet most Indian farmers remain at the bottom of the social strata. In addition, farmers find it difficult to decide which crop is best suitable and profitable for their soil, in spite of the few technological solutions that exist today, due to the variation in soil types across geographical regions. Economy contributes the most for the productivity of the agriculture. In agricultural field, the disease in plants is more common and the detection of disease in plants has become more feasible due to the above reason. These day's plant disease detection has acquired enlarging scrutiny in shriveling crops of large and various fields. Farmers undergo significant hassles in chop and changing from one disease administer principle to a different one. We can identify or spotting the tomato leaf diseases for detection for surveillance and monitoring experts is the standard approach for detection. The plants get seriously affected if the proper control hasn't been taken and this represents the quality of the pants the production of the plants will be affected.

KEYWORDS: Soil Random Forest Classifier, Decision Tree Classifier, SVC, Logistic Regression, Gaussian NB and MLP Classifier.

Crop- Random Forest Classifier, Decision Tree Classifier, SVC, AdaBoost and XG Boost.

Plant- CNN, ANN, SVC and ResNet50.

I. INTRODUCTION

One of the primary challenges in the domains of soil prediction, fertility suggestion, crop prediction, and plant disease detection is the lack of uniformity and integration of data sources. Agriculture relies on multifaceted data such as soil quality, weather patterns, and pest/disease data, which often come from disparate sources and in various formats. Integrating and standardizing this data for comprehensive analysis is a pressing issue.

While advanced technologies are transforming agriculture, they are not equally accessible to all farmers, particularly smallholders in developing regions. The problem lies in the scalability of these solutions. Developing cost-effective, scalable, and user-friendly tools that cater to the specific needs of diverse farming communities remains a significant challenge. As precision agriculture technologies evolve, questions concerning their environmental impact and ethical usage come to the forefront. Over-reliance on fertilizers or pesticides based on AI recommendations can have detrimental effects on ecosystems, and concerns about data privacy and security are growing.

This results in improved resource efficiency, reduced environmental impact, and maximized crop yields. The integration of real-time data and predictive analytics allows for dynamic adjustments in crop management practices, paving the way for sustainable and profitable farming. This paper explores the methodologies and technologies involved in enhancing crop management and yield optimization within the framework of precision agriculture.

II. LITERATURE SURVEY

Most of the machine learning techniques have been explored by following the reviewing process shown in figure 2.1, aiming at fitting precision agriculture into decision trees, support vector machines, and neural networks. Based on their successful record in similar applications related to agriculture and heterogeneous data management capabilities, we chose some algorithms for investigation. It was chosen based on the reason that there has been a need for models that

balance computing economy with accuracy, mostly in decision making in agricultural environments in real-time. The researchers quantified that a crop yield increased by 10% with a water-consumption decrease of 15% when irrigation scheduling was adjusted by machine learning models trained on soil moisture data and weather forecasts. reviewed the utilization of CNNs for rating drone photographs with respect to early crop disease diagnosis. It can be identified that in this respect, various disorders have been detected accurately with 92% accuracy, thereby allowing appropriate action and treatment. focused on ensemble and SVR methods to make projections of crop yield based on recorded yield from previous years and weather conditions recorded by farmers. The better efficiency of input use and management is through accurate yield projections. The clustering techniques were used by to evaluate soil health data and design a plan inside the fields. It reduced the cost of input by 20% and enhanced the soil nutrient management service.

III. METHODOLOGIES

1. Data Collection:

Data is gathered from multiple sources, including satellite imagery, IoT sensors, drones, weather stations, and historical agricultural records. The dataset includes soil properties, weather conditions, crop growth patterns, pest infestations, and resource utilization.

Satellite Imagery: Provides large-scale, regular monitoring of crop health and vegetation indices.

Drones (UAVs): Offer high-resolution, real-time aerial imaging for detecting crop stress and variability.

IoT Sensors: Installed in the field to measure soil moisture, temperature, pH, and nutrient levels.

Weather Stations: Record environmental factors such as temperature, rainfall, humidity, and wind speed.

Historical Records: Include past yield data, planting history, and pest/disease occurrences.

2. Data Preprocessing:

Cleaning the raw data by handling missing values, removing outliers, and normalizing features. Feature extraction and engineering to enhance model performance.

Data Cleaning: Eliminate errors, outliers, duplicates, and fill in missing values to ensure accuracy.

Data Integration: Combine data from various sources such as sensors, drones, and weather stations into a unified dataset.

Normalization and Transformation: Convert data into a consistent format and scale to enable proper analysis

3. Machine Learning Model Selection:

Various ML algorithms, such as regression models, decision trees, support vector machines (SVM), and deep learning networks, are considered. Feature selection methods are used to identify the most relevant attributes affecting crop yield. The selection of an appropriate machine learning model is crucial for accurately forecasting crop yields, detecting diseases, predicting environmental impacts, and providing decision support for resource management. Below are key considerations and steps for selecting the right machine learning model:

Problem Type: Choose models based on the task at hand—supervised learning for prediction and classification, unsupervised for anomaly detection, or reinforcement learning for optimization tasks like irrigation and fertilization.

Data Availability: Select models based on the quantity and quality of available data, with large, labeled datasets favoring supervised models and sparse data favoring unsupervised methods.

Model Complexity: Balance between simple models (e.g., linear regression, decision trees) for interpretability and more complex models (e.g., deep learning, random forests) for higher accuracy and handling large datasets.

Interpretability: Prioritize models that are easily interpretable, like decision trees or random forests, to ensure transparency and trust in model recommendations for farmers.

4. Model Training & Optimization:

The dataset is split into training, validation, and test sets. Hyperparameter tuning is performed using techniques like grid search and cross-validation.

Data Splitting: Divide the dataset into training, testing, and sometimes validation sets to ensure that the model is trained on one set and tested on another, preventing overfitting.

Feature Engineering and Selection: Identify and select the most relevant features (e.g., soil moisture, weather conditions) that significantly impact crop health and yield, improving model performance and efficiency.

Hyperparameter Tuning: Optimize the model's external parameters (e.g., learning rate, tree depth) using methods like grid search or random search to enhance predictive accuracy.

Cross-Validation and Performance Evaluation: Use techniques like cross-validation to evaluate the model's generalization ability and monitor metrics like RMSE or accuracy to ensure robust performance on unseen data.

5. Prediction & Decision-Making: The trained model predicts optimal farming strategies, such as irrigation schedules, pest control measures, and fertilizer application. Results are visualized through dashboards for easy interpretation by farmers.

Predictive Modeling for Crop Yield and Health: Machine learning models forecast crop yields, pest outbreaks, and disease risks based on historical and real-time data, helping farmers plan interventions proactively.

Decision Support Systems (DSS): Integrated systems offer actionable insights for optimized irrigation, fertilization, and pest management, allowing farmers to make real-time, data-driven decisions.

Optimization Algorithms for Resource Allocation: Technologies like Variable Rate Technology (VRT) apply resources (e.g., water, fertilizer) variably across fields, ensuring efficient use and reducing waste.

Real-Time Decision-Making with IoT and Automation: IoT devices collect data for real-time adjustments in irrigation, pest control, and fertigation, automating farm operations based on predictive insights

6. Implementation & Validation: The developed model is tested in real-world agricultural settings. Performance metrics are monitored over multiple farming seasons to validate its effectiveness. The implementation and validation of precision agriculture methodologies are critical to ensuring that the predictive models, data collection systems, and decision-making tools function as expected and provide tangible benefits in terms of crop yield optimization, resource use, and sustainability. The process involves deploying the models in real-world farm settings, testing their accuracy, and making necessary adjustments.

IV. ML MODELS

1. Supervised Learning Models

Supervised learning involves training models on labeled datasets (where the output or result is known). The model learns to map input features to the corresponding output.

Regression Models: Used to predict continuous values, such as crop yield or soil moisture.

Example: A regression model can predict the expected crop yield based on historical weather data, soil health, and irrigation practices.

Classification Models: Used for tasks where the output is categorical, such as detecting crop diseases or classifying soil types.

Example: A classification model might classify a crop as healthy or diseased based on satellite images and environmental conditions.

Common Algorithms: Linear Regression, Support Vector Machines (SVM), Random Forests, and Neural Networks.

2. Unsupervised Learning Models

Unsupervised learning is used when the data does not have labeled output. These models discover patterns, groupings, or anomalies in the data.

Clustering Models: These models group similar data points together based on their characteristics. This is useful in segmentation tasks like classifying fields into zones with similar soil types or moisture levels.

Example: Clustering models can identify areas of a field with similar soil nutrients, enabling farmers to apply fertilizers more efficiently.

Anomaly Detection: Used to identify unusual patterns or outliers in data, such as unexpected crop stress or pest outbreaks.

Example: Identifying areas with abnormal crop growth due to nutrient deficiencies or pest infestation.

Common Algorithms: K-Means Clustering, DBSCAN, Principal Component Analysis (PCA).

3. Reinforcement Learning Models

Reinforcement learning involves an agent learning to make decisions through trial and error by interacting with the environment. In agriculture, this can be used for optimizing resource management over time.

Decision Optimization: Reinforcement learning can optimize processes like irrigation, fertilization, and pest control by continuously adjusting based on real-time data.

Example: A reinforcement learning model can learn the optimal irrigation schedule that minimizes water usage while maximizing crop growth.

Real-Time Adaptation: The model learns from its actions and updates its decisions to improve long-term outcomes.

Example: A system that learns the best time to apply fertilizers by evaluating crop growth patterns and weather forecasts.

Common Algorithms: Q-Learning, Deep Q-Networks (DQN), Proximal Policy Optimization (PPO).

4. Deep Learning Models

Deep learning models, a subset of machine learning, use neural networks with many layers to learn complex patterns in large datasets, particularly for tasks involving image recognition or large-scale data.

Image Processing: Deep learning models can process satellite or drone images to detect early signs of crop diseases, pest infestations, or nutrient deficiencies.

Example: Convolutional Neural Networks (CNNs) analyze drone imagery to detect areas of crops affected by disease or drought stress.

Predictive Analytics: Deep learning models can predict crop yields, disease outbreaks, and environmental conditions by analyzing historical data combined with real-time inputs.

Example: A deep learning model might predict yield variations across different areas of a field based on historical weather, soil moisture data, and real-time drone images.

Common Algorithms: Convolutional Neural Networks (CNN), Recurrent Neural Networks (RNN), Long Short-Term Memory Networks (LSTM)

5. Hybrid Models

In some cases, hybrid models combining supervised, unsupervised, and reinforcement learning techniques are used for complex tasks like precision irrigation and smart pest control.

Example: A hybrid model may use unsupervised learning for soil clustering, supervised learning for yield prediction, and reinforcement learning for optimizing water and fertilizer usage.

V. SYSTEM ARCHITECTURE

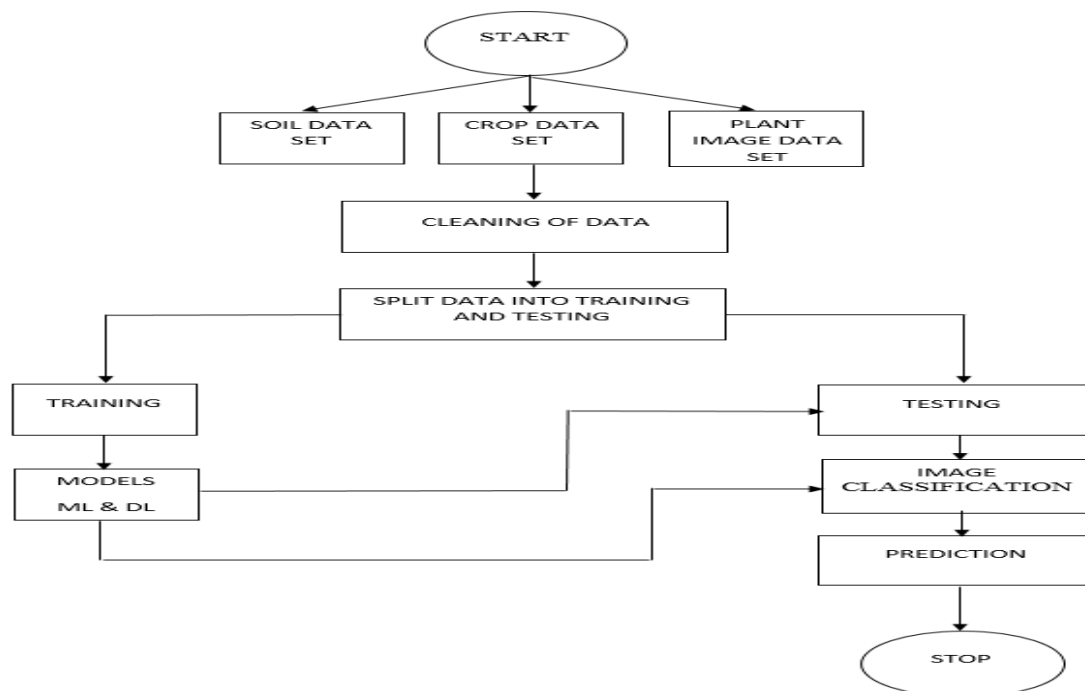


Fig 5.1: System Architecture

VI. PROPOSED SYSTEM

The proposed system introduces a comprehensive, technology-driven approach to enhance crop management and optimize agricultural yields. By integrating IoT sensors, AI algorithms, and automated control systems, the system enables data-driven decisions that ensure efficient resource use and improved crop productivity.

System Objectives:

Monitor real-time environmental and crop parameters. Automate irrigation, fertilization, and pest control. Predict crop health issues and yield outcomes using AI. Provide farmers with actionable insights through an intuitive dashboard.

Workflow:

Data Collection: Sensors and drones monitor field conditions.

Data Analysis: AI engine processes data to detect patterns.

Recommendation Generation: DSS suggests optimal actions.

Action Implementation: Automated systems execute the interventions.

Feedback Loop: System evaluates outcomes and adjusts future decisions.

Benefits and Expected Outcomes:

Yield Optimization: Increased crop output through precise management.

Resource Efficiency: Reduced water, fertilizer, and pesticide use.

Early Intervention: Prevention of diseases and pest outbreaks.

Scalability: Applicable to small, medium, and large-scale farms.

Sustainability: Lower environmental impact through precision practices.

VII. CONCLUSION

Enhanced crop management through precision agriculture represents a transformative shift in modern farming, combining advanced technologies with data-driven decision-making to improve crop productivity and sustainability. By leveraging tools such as GPS mapping, remote sensing, IoT-enabled devices, and data analytics, farmers can monitor field variability, optimize input usage, and make more informed agronomic decisions. This tailored approach ensures that resources like water, fertilizers, and pesticides are used efficiently, reducing waste and environmental impact while increasing overall yield.

Moreover, precision agriculture fosters early detection of pests, diseases, and nutrient deficiencies, allowing for timely interventions that minimize crop losses. The integration of real-time data and predictive modeling enables farmers to adapt to changing climate conditions and market demands more effectively. As global food security becomes an increasingly critical issue, the ability to maximize yield without expanding land use is essential. Precision agriculture addresses this by enhancing productivity on existing farmland.

The core advantage of enhanced crop management lies in its ability to address variability within fields. Instead of treating entire fields uniformly, precision agriculture allows for zone-specific treatment, ensuring each part of the field receives exactly what it needs. This leads to better nutrient management, efficient irrigation, and targeted pest and disease control, which not only increases yields but also lowers costs and minimizes environmental degradation. For instance, smart irrigation systems can significantly reduce water use while maintaining or even improving crop quality and output.

In conclusion, the fusion of technology with traditional agricultural practices is not just a trend but a necessity for sustainable and efficient farming. Enhanced crop management through precision agriculture offers a promising path toward optimizing yields, preserving natural resources, and ensuring long-term agricultural resilience. As technology continues to evolve, its integration into agriculture will become even more vital, empowering farmers with the tools they need to meet future challenges head-on.

REFERENCES

- [1] Chlingaryan, Anna, Salah Sukkarieh, and Brett Whelan. "Machine learning approaches for crop yield prediction and nitrogen status estimation in precision agriculture: A review." *Computers and electronics in agriculture* 151 (2018): 61-69.
- [2] Shaikh, Tawseef Ayoub, Tabasum Rasool, and Faisal Rasheed Lone. "Towards leveraging the role of machine learning and artificial intelligence in precision agriculture and smart farming." *Computers and Electronics in Agriculture* 198 (2022): 107119.
- [3] Manikandababu, C. S., V. Preethi, M. Yogesh Kanna, K. Vedhathiri, and S. Suresh Kumar. "Enhancing Crop Yield Prediction with IoT and Machine Learning in Precision Agriculture." In *2024 International Conference on Advances in Computing, Communication and Applied Informatics (ACCAI)*, pp. 1-6. IEEE, 2024.
- [4] Tripathi, Vikas, Devvret Verma, and Rajesh Upadhyay. "PREDICTION OF CROP YIELD IN PRECISION AGRICULTURE USING MACHINE LEARNING METHODS." *Webology* 18, no. 4 (2021): 2244-2257.
- [5] Saggi, Mandeep Kaur, and Sushma Jain. "A survey towards decision support system on smart irrigation scheduling using machine learning approaches." *Archives of computational methods in engineering* 29, no. 6 (2022): 4455-4478.
- [6] Bouguettaya, Abdelmalek, Hafed Zarzour, Ahmed Kechida, and Amine Mohammed Taberkit. "Deep learning techniques to classify agricultural crops through UAV imagery: A review." *Neural computing and applications* 34, no. 12 (2022): 9511-9536.
- [7] Cao, Junjun, Huijing Wang, Jinxiao Li, Qun Tian, and Dev Niyogi. "Improving the forecasting of winter wheat yields in Northern China with machine learning–dynamical hybrid subseasonal-to-seasonal ensemble prediction." *Remote Sensing* 14, no. 7 (2022): 1707.
- [8] Hou, Deyi, Nanthi S. Bolan, Daniel CW Tsang, Mary B. Kirkham, and David O'connor. "Sustainable soil use and management: An interdisciplinary and systematic approach." *Science of the Total Environment* 729 (2020): 138961.
- [9] Muruganantham, Priyanga, Santoso Wibowo, Srimannarayana Grandhi, Nahidul Hoque Samrat, and Nahina Islam. "A systematic Proceedings of the International Conference on I-SMAC (IoT in Social, Mobile, Analytics and Cloud) (I-SMAC 2024).



INTERNATIONAL
STANDARD
SERIAL
NUMBER
INDIA



INTERNATIONAL JOURNAL OF INNOVATIVE RESEARCH

IN SCIENCE | ENGINEERING | TECHNOLOGY

 9940 572 462  6381 907 438  ijirset@gmail.com



www.ijirset.com

Scan to save the contact details