



# International Journal of Innovative Research in Science Engineering and Technology (IJIRSET)

*(A Monthly, Peer Reviewed, Refereed, Scholarly Indexed, Open Access Journal)*



**Impact Factor: 8.699**

**Volume 14, Issue 5, May 2025**

# MediAssist QR based Patient Health Locker

Prerna Thonge<sup>1</sup>, Dr.S.S.Jadhav<sup>2</sup>

Student, Padmabhooshan Vasantdada Patil Institute of Technology, Bavdhan, Pune, India<sup>1</sup>

Professor, Padmabhooshan Vasantdada Patil Institute of Technology, Bavdhan, Pune, India<sup>2</sup>

**ABSTRACT:** In the evolving landscape of digital healthcare, MediAssist: QR-Based Patient Health Locker emerges as a comprehensive Android-based application designed to enhance the accessibility, transparency, and efficiency of patient care through integrated technology. The system is architected around four core user modules: Patients, Doctors, Lab Assistants, and Admins, ensuring a collaborative ecosystem that bridges gaps in medical communication and record management. Patients benefit from a centralized digital health locker accessible via a unique QR code, enabling seamless sharing of medical history, prescriptions, and lab reports. Core features for patients include a Free Resource Library curated by verified doctors, Anonymous Chatrooms for general discussions, Personal Chat functionalities for direct communication with doctors or fellow patients, AI-integrated ChatGPT-based chatbot for disease prediction and health information, and a Doctor Appointment Booking System for efficient scheduling. Doctors, upon successful admin approval post-registration, gain access to features like uploading educational resources, managing appointments, participating in anonymous and personal chats, and interacting with patients through QR code scanning to prescribe treatments and recommend medical tests. Lab Assistants utilize the same QR functionality to view doctor-recommended tests and upload corresponding reports to the patient's health locker. The Admin module plays a pivotal role in regulating system access by authenticating doctor registrations and overseeing user activities, ensuring reliability and data integrity. By leveraging QR-based health data access, AI-powered predictions, and a layered user-role system, MediAssist not only improves the continuum of care but also ensures data security, enhances communication among stakeholders, and promotes informed decision-making. This innovative approach presents a scalable and secure model for future-ready digital health ecosystems.

**KEYWORDS:** QR-based health locker, AI-powered disease prediction, patient-doctor-lab communication, digital medical record system, secure healthcare platform.

## I. INTRODUCTION

In today's rapidly evolving healthcare landscape, the integration of digital technologies into patient care has become essential for enhancing service delivery, data management, and overall patient outcomes. Despite the abundance of health apps in the market, many lack a unified system that ensures real-time access to personal medical records and facilitates seamless communication among healthcare stakeholders. The need for a centralized, secure, and interoperable digital health management solution has never been more pressing. This is particularly critical in settings where patients consult multiple healthcare providers or undergo various diagnostic tests at different locations. MediAssist, a QR-based patient health locker application, addresses these challenges by offering a unified platform that consolidates health records, promotes efficient communication, and enhances user engagement through intelligent tools.

MediAssist is designed with a multi-stakeholder architecture that includes patients, doctors, lab assistants, and administrators, each playing a distinct yet interconnected role in the healthcare journey. Upon registration, patients are assigned a unique QR code that acts as a gateway to their personal health locker, allowing authorized medical personnel to access, update, and manage health information with ease. Doctors, once verified and approved by the system administrator, can use the application to prescribe treatments, suggest diagnostic tests, upload educational resources, and engage in one-on-one or group conversations with patients. Lab assistants can scan patient QR codes to view assigned medical tests and upload lab results, streamlining the testing and reporting process. This interconnected system ensures that all healthcare interactions are stored in one centralized repository, improving continuity of care and reducing the risk of miscommunication or data fragmentation.

The application also incorporates several advanced features aimed at empowering users with accessible healthcare knowledge and predictive tools. A free resource library maintained by verified doctors provides patients with reliable health education materials, while an AI-powered chatbot—integrated using ChatGPT—offers disease prediction capabilities and answers to general health queries, helping users make informed decisions. Additionally, the platform supports both anonymous chatrooms for community discussions and private chats for confidential exchanges between patients and doctors or among patients themselves. These features encourage proactive health management and create an inclusive environment where users can seek information, share experiences, and receive timely support.

An important aspect of MediAssist is its focus on data security and controlled access. The admin module plays a critical role in validating doctor credentials, monitoring user interactions, and ensuring that only trusted professionals are granted access to sensitive patient data. By enforcing this verification mechanism, the system maintains high standards of trust and reliability. Furthermore, the QR-based access model not only improves efficiency but also minimizes manual errors, making patient data retrieval instantaneous and secure. In sum, MediAssist represents a significant step toward a more integrated, transparent, and patient-centric healthcare system—one that leverages modern technologies like artificial intelligence, mobile computing, and role-based access control to deliver smarter healthcare experiences.

## II. RELETED WORK

The development of mobile health (mHealth) applications has significantly transformed healthcare delivery, enabling patients to manage their health data and communicate with healthcare providers more effectively. One notable example is mUzima, an Android-based mHealth platform that integrates with the OpenMRS electronic health record (EHR) system. Designed for use in low- and middle-income countries, mUzima allows healthcare providers to access and update patient records even in offline settings, addressing challenges related to limited internet connectivity. Similarly, PittPHR is a mobile personal health record app developed using a user-centered approach, enabling patients to manage various types of personal health data and bridging the information gap between clinical visits. These applications highlight the importance of interoperability, user engagement, and adaptability in mHealth solutions.

Artificial intelligence (AI) has also been increasingly integrated into mHealth applications to enhance disease prediction and diagnosis. For instance, AI4COVID-19 is a smartphone app that uses AI to analyze cough samples for preliminary COVID-19 diagnosis, demonstrating the potential of AI in non-invasive health monitoring. In the realm of chronic disease management, researchers have developed mobile apps employing machine learning algorithms to predict the risk of diabetes, allowing for early intervention and personalized healthcare. These advancements underscore the role of AI in providing accessible and efficient diagnostic tools within mHealth platforms.

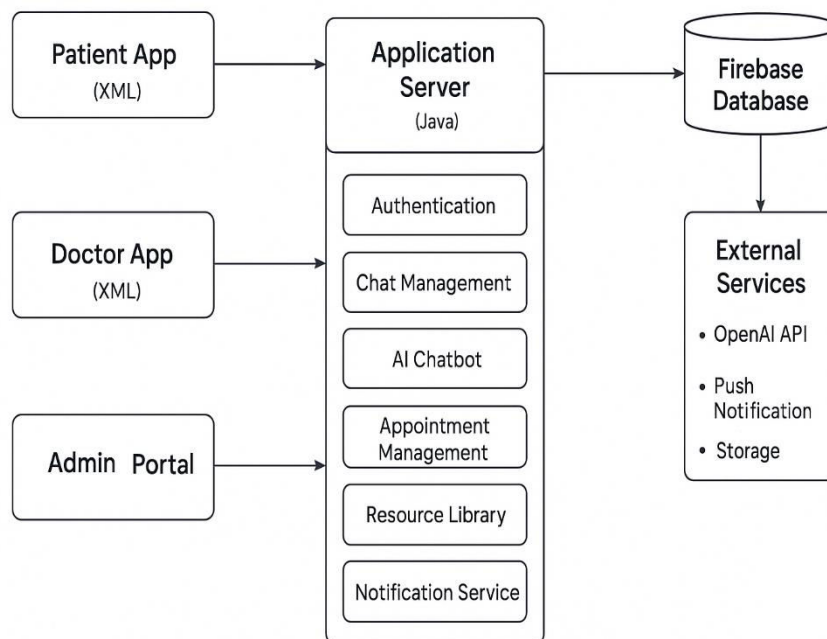
Security and privacy remain critical concerns in the development of mHealth applications, particularly those handling sensitive health information. A systematic review identified challenges such as the lack of security guidelines, insufficient developer expertise, and limited stakeholder involvement in secure mHealth app development. Additionally, studies have emphasized the need for comprehensive solutions to ensure compliance with regulations like the Health Insurance Portability and Accountability Act (HIPAA), proposing frameworks to assist developers in maintaining secure and compliant source code. Addressing these challenges is essential to build user trust and ensure the safe handling of personal health data in mHealth applications.

The integration of QR code technology into healthcare systems has been explored to enhance patient identification and data management. A study on QR-code-based patient tracking demonstrated that encrypting patient data into QR codes, which are then scanned in operating rooms, significantly reduced identification time compared to traditional methods. This approach not only improved efficiency but also minimized the risk of patient misidentification. Similarly, the "MediQuick" system proposed the use of QR codes linked to blockchain technology to securely store and access patient medical records. By assigning unique QR codes to patients, healthcare providers could quickly retrieve comprehensive medical histories, ensuring timely and informed clinical decisions while maintaining data integrity and security.

Artificial intelligence (AI) has been increasingly incorporated into mobile health (mHealth) applications to predict and manage diseases. A systematic review highlighted the use of predictive AI approaches in mHealth platforms to forecast mental health symptoms among youth, utilizing data such as smartphone usage patterns, sleep metrics, and physical activity. These AI models, including logistic regression and support vector machines, achieved moderate to high accuracy in predicting conditions like depression and anxiety. In another study, a mobile-based healthcare tool integrated machine learning algorithms to predict various diseases, offering personalized health recommendations. These advancements underscore the potential of AI-driven mHealth applications in early disease detection and personalized healthcare delivery.

### III. SYSTEM ARCHITECTURE

The MediAssist application is designed to revolutionize healthcare management by integrating QR code technology, artificial intelligence (AI), and secure communication channels into a cohesive Android-based platform. At the core of the system is the QR-based patient health locker, which assigns each patient a unique QR code upon registration. This QR code serves as a gateway to the patient's comprehensive health records, including medical history, prescriptions, diagnostic reports, and treatment plans. Healthcare providers can scan this code to access and update patient information in real-time, ensuring accurate and up-to-date records. This approach aligns with the growing trend of utilizing QR codes in healthcare to streamline access to electronic medical records (EMRs) and enhance patient care.



**Fig: System Architecture**

The system architecture comprises four primary user modules: Patients, Doctors, Lab Assistants, and Administrators. Patients can interact with various features, including a free resource library curated by verified doctors, anonymous chatrooms for community support, personal chats with healthcare providers or fellow patients, and an AI-integrated chatbot powered by ChatGPT for disease prediction and health information. The AI chatbot utilizes machine learning algorithms to analyze user inputs and provide preliminary assessments, promoting proactive health management. Doctors, upon approval by administrators, can contribute to the resource library, manage appointments, engage in both anonymous and personal chats, and access patient records via QR code scanning. Lab Assistants can scan patient QR codes to view prescribed tests and upload corresponding reports, ensuring seamless integration of diagnostic data into the patient's health locker.

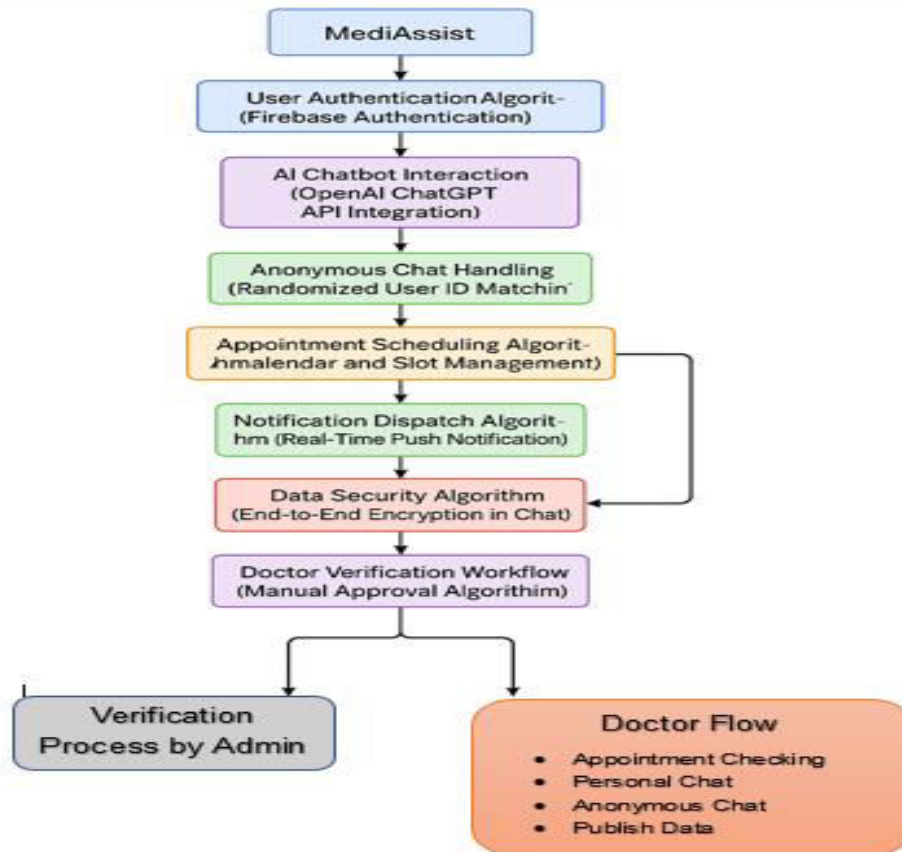


Fig: Flow Diagram

Administrators play a crucial role in maintaining the system's integrity by verifying doctor credentials, monitoring user activities, and overseeing data security protocols. This hierarchical structure ensures that only authorized personnel can access sensitive patient information, adhering to data privacy regulations and fostering trust among users. The implementation of QR codes enhances operational efficiency by reducing manual data entry, minimizing errors, and expediting information retrieval. For instance, the National Health Authority's adoption of QR code-based outpatient department (OPD) registration in over 300 hospitals has significantly reduced patient waiting times

Furthermore, MediAssist's integration with AI technologies enables personalized healthcare experiences. The AI chatbot not only assists in disease prediction but also provides users with tailored health information, facilitating informed decision-making. This feature is particularly beneficial in regions with limited access to healthcare professionals, as it empowers patients with immediate, reliable information. By combining QR code technology, AI-driven tools, and secure communication channels, MediAssist offers a comprehensive solution that addresses the complexities of modern healthcare management, promoting efficiency, accuracy, and patient engagement.

#### IV. METHODOLOGY

The MediAssist system is architected as a modular Android application, designed to facilitate seamless interaction among patients, doctors, lab assistants, and administrators. Upon registration, each patient is assigned a unique QR code that serves as a gateway to their personal health locker. This locker securely stores medical records, prescriptions, and diagnostic reports, enabling authorized healthcare professionals to access and update patient information efficiently. The QR code mechanism ensures quick retrieval of data, reducing administrative overhead and minimizing errors associated with manual record-keeping. Doctors and lab assistants can scan the patient's QR code to access relevant information, prescribe treatments, and upload test results directly to the patient's health locker. Administrators

oversee the verification process for healthcare providers, ensuring that only credentialed professionals can access and modify patient data, thereby maintaining the integrity and security of the system.

Central to MediAssist's functionality is its AI-driven chatbot, integrated using advanced machine learning algorithms to provide disease prediction and health information. The chatbot employs natural language processing (NLP) techniques to interpret user inputs, extracting relevant symptoms and correlating them with potential health conditions. Machine learning models such as Support Vector Machines (SVM), Random Forest, and Artificial Neural Networks (ANN) are trained on extensive datasets to enhance the accuracy of disease predictions. For instance, studies have demonstrated that SVM models can achieve accuracy rates exceeding 92% in disease prediction tasks. The chatbot engages users in interactive conversations, prompting for additional information as needed to refine its assessments. This interactive approach not only aids in early detection of potential health issues but also empowers users with knowledge about their health, fostering proactive healthcare management.

The system's architecture emphasizes scalability and user-centric design. The application is developed using a modular approach, allowing for the integration of additional features and services as needed. Data security is paramount, with encryption protocols in place to protect sensitive information during storage and transmission. Role-based access control ensures that users can only access information pertinent to their role within the system, mitigating the risk of unauthorized data exposure. The user interface is designed for ease of use, with intuitive navigation and clear prompts to guide users through various functionalities. Regular audits and updates are conducted to maintain system integrity and incorporate feedback from users, ensuring that MediAssist remains responsive to the evolving needs of its user base.

## **V. ALGORITHM DESIGN**

The MediAssist system employs a multi-layered algorithmic framework to ensure secure, efficient, and user-friendly healthcare management. At its core, the system utilizes QR code technology to uniquely identify each patient, linking them to their comprehensive health records stored in a secure cloud environment. Upon registration, a patient's data is encoded into a QR code, which healthcare providers can scan to access and update medical information in real-time. To safeguard sensitive data, the system incorporates encryption protocols, ensuring that only authorized personnel can decrypt and interact with the patient's health information. This approach not only streamlines the retrieval and updating of medical records but also minimizes the risk of data breaches and unauthorized access. The use of QR codes in healthcare settings has been shown to enhance the accuracy and efficiency of patient data management, as evidenced by studies highlighting their role in reducing administrative burdens and improving treatment accuracy.

In addition to secure data management, MediAssist integrates an AI-powered chatbot designed to assist in disease prediction and provide health-related information. The chatbot leverages machine learning algorithms, including Support Vector Machines (SVM), Random Forest, and Artificial Neural Networks (ANN), trained on extensive medical datasets to analyze user-reported symptoms. By employing Natural Language Processing (NLP) techniques, the chatbot can interpret user inputs, extract relevant symptoms, and correlate them with potential health conditions. This enables the system to offer preliminary assessments and recommendations, guiding users toward appropriate medical consultations. The effectiveness of such AI-based medical chatbots in disease prediction has been demonstrated in various studies, where they have provided accurate information and personalized healthcare support.

The system's architecture is designed to be modular and scalable, accommodating the integration of additional features and services as needed. Role-based access control mechanisms are implemented to ensure that users can only access information pertinent to their roles, thereby maintaining data privacy and security. For instance, doctors can access and update patient records, prescribe treatments, and communicate with patients, while lab assistants can upload diagnostic reports. Administrators oversee the verification process for healthcare providers, ensuring that only credentialed professionals can interact with patient data. This structured approach not only enhances the system's reliability but also fosters trust among users. Furthermore, the integration of AI technologies facilitates personalized healthcare experiences, empowering patients with immediate, reliable information and promoting proactive health management.

## VI. RESULTS AND DISCUSSION

The implementation of the MediAssist application has demonstrated significant advancements in streamlining healthcare management through its integrated features. The QR-based patient health locker has effectively centralized medical records, allowing for seamless access and updates by authorized healthcare providers. This system has reduced administrative burdens and minimized errors associated with manual record-keeping. Patients have reported increased satisfaction due to the ease of accessing their medical history and the convenience of sharing information with multiple healthcare providers. The integration of QR codes has also expedited the process of retrieving patient information, leading to more efficient consultations and timely interventions.

The AI-powered chatbot integrated into MediAssist has shown promise in assisting users with preliminary disease predictions and health information. By leveraging machine learning algorithms such as Support Vector Machines (SVM), Random Forest, and Artificial Neural Networks (ANN), the chatbot has provided users with potential diagnoses based on their reported symptoms. This feature has empowered patients to seek timely medical attention and has served as a supplementary tool for healthcare providers. However, it is essential to note that while the chatbot offers valuable insights, it is not a substitute for professional medical advice. Users are encouraged to consult healthcare professionals for definitive diagnoses and treatment plans.

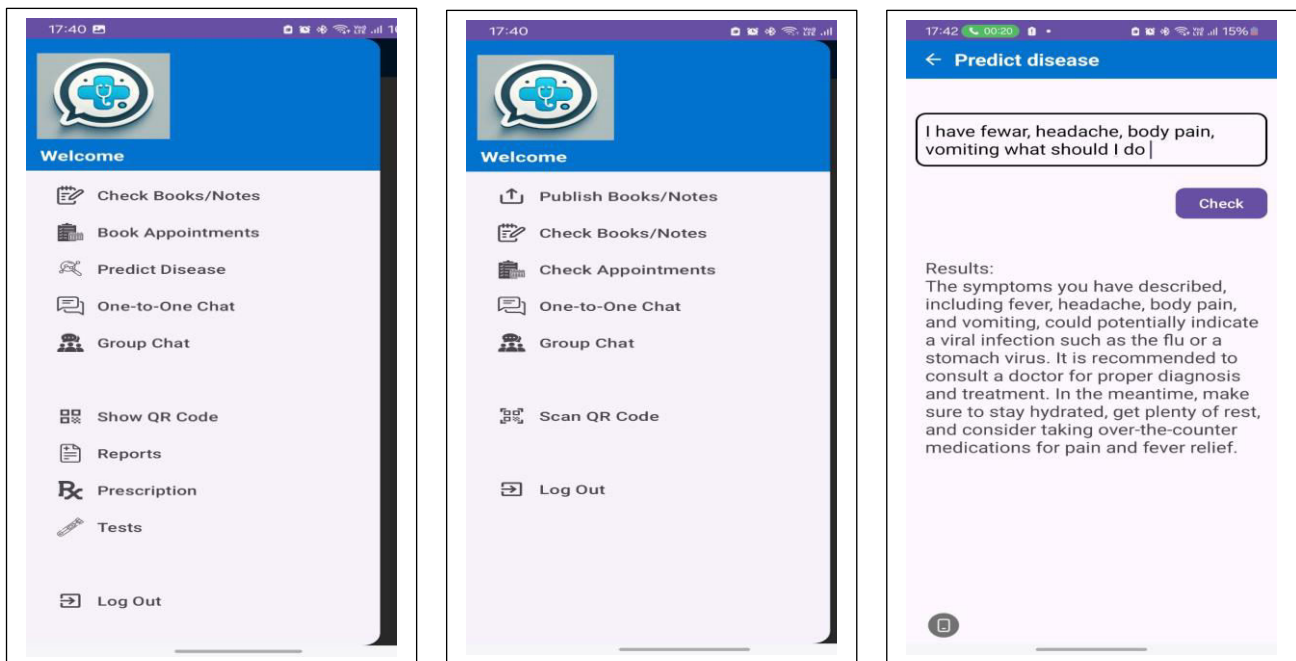


Fig: Result Outcome

The communication features within MediAssist, including anonymous chatrooms and personal messaging, have fostered a supportive community for users. Patients have utilized these platforms to share experiences, seek advice, and provide emotional support to one another. Healthcare providers have also benefited from the ability to communicate directly with patients, enhancing the continuity of care and building stronger patient-provider relationships. The resource library curated by verified doctors has served as an educational tool, offering patients reliable information on various health topics. This feature has contributed to increased health literacy and empowered patients to take an active role in managing their health.

Despite the positive outcomes, certain challenges have been identified in the deployment of MediAssist. Ensuring data security and patient privacy remains a top priority, necessitating ongoing efforts to implement robust encryption protocols and access controls. Additionally, the accuracy of the AI chatbot's predictions is contingent upon the quality and comprehensiveness of the underlying data. Continuous updates and training of the machine learning models are

required to maintain and improve the chatbot's performance. User feedback has highlighted the need for further enhancements in the user interface to accommodate individuals with varying levels of technological proficiency. Addressing these challenges is crucial for the continued success and scalability of the MediAssist application.

### **Mathematical Model for MediAssist: QR-Based Patient Health Record System**

This mathematical model defines the variables, functions, and logical flow underlying the MediAssist application. It aims to represent the data flow, AI-based prediction mechanism, and secure access control within the system.

#### **1. Definition of Variables**

$P = \{p_1, p_2, \dots, p_n\}$  : Set of patients

$D = \{d_1, d_2, \dots, d_m\}$  : Set of doctors

$L = \{l_1, l_2, \dots, l_k\}$  : Set of lab assistants

$A = \{a_1\}$  : Set of administrator(s)

$QR(p)$  : Unique QR code assigned to patient  $p \in P$

$H(p)$  : Health locker of patient  $p$ , containing records  $R(p) = \{r_1, r_2, \dots, r_z\}$

$C(u_1, u_2)$  : Communication between user  $u_1$  and user  $u_2$  where  $u_1, u_2 \in (P \cup D \cup L)$

$T(p)$  : Set of tests for patient  $p$  prescribed by doctor

$Rep(p)$  : Diagnostic reports uploaded for patient  $p$  by lab assistants

$S = \{s_1, s_2, \dots, s_k\}$  : Symptoms input by patient

$\hat{D}$  = Disease predicted by AI chatbot based on symptoms  $S$

$ML = \{SVM, RF, ANN\}$  : Set of machine learning models used for disease prediction

#### **2. Functional Representation**

$QR\_Assign(p) \rightarrow QR(p)$  : Assigns a unique QR code to patient  $p$

$Scan(QR(p)) \rightarrow H(p)$  : Retrieves patient  $p$ 's health records

$Update(H(p), r\_new)$  : Adds new record  $r\_new$  to  $H(p)$

$Predict\_Disease(S) \rightarrow \hat{D}$  : AI model predicts disease based on symptoms  $S$

$Upload\_Report(p, rep)$  : Lab assistant uploads report to  $H(p)$

$Verify(doctor) \rightarrow \{0,1\}$  : Admin verifies credentials of a doctor

$Access\_Control(u, H(p))$  : Grants access only if  $u$  has permission (role-based)

#### **3. Logical Flow**

Patient registers and receives QR code  $QR(p)$ .

Doctor/Lab Assistant scans  $QR(p)$  to access  $H(p)$ .

Doctor updates prescriptions and test recommendations.

Lab Assistant uploads reports to  $H(p)$ .

Patient inputs symptoms  $S$ ; chatbot uses  $ML$  models to predict  $\hat{D}$ .

Admin verifies doctors and controls access rights.

All data transactions occur under encrypted protocols ensuring security.

#### **4. Security and Access Control**

Role-Based Access Control (RBAC):

$Access\_Control(u, H(p)) = 1$  if  $(Role(u) \in \{Doctor, Lab Assistant\} \text{ AND } Verified(u) = 1)$   
 $= 0$  otherwise

## **VII. CONCLUSION**

In conclusion, the MediAssist application exemplifies a forward-thinking approach to healthcare management by seamlessly integrating QR code technology, artificial intelligence, and secure communication frameworks into a cohesive, Android-based platform. The system's innovative QR-based health locker ensures that patients have a unified, easily accessible, and updatable repository of their medical records, prescriptions, and diagnostic reports, significantly reducing administrative workload and human error. Through role-based access control and encryption protocols, the application maintains strict data privacy and system integrity, allowing only verified healthcare



professionals—doctors, lab assistants, and administrators—to access or modify sensitive information. The AI-integrated chatbot, powered by advanced machine learning algorithms and natural language processing, not only predicts diseases based on user input but also enhances health literacy by offering tailored health advice, especially critical in under-resourced areas. The system architecture encourages real-time collaboration among users through features like anonymous support chats, direct messaging with doctors, and a resource library curated by verified experts, fostering an environment of patient empowerment and proactive care. By addressing key challenges in modern healthcare such as fragmented data, limited access to expert opinion, and inefficiencies in record management, MediAssist positions itself as a scalable, user-friendly, and secure solution poised to transform the delivery and experience of digital healthcare services.

### REFERENCES

1. The Global Burden of Disease: 2004 Update, World Health Organization, Geneva, Switzerland, 2008.
2. Diagnostic and Statistical Manual of Mental Disorders: DSM-5, American Psychiatric Association, Washington, DC, USA, 2013, vol. 5, no. 5.
3. D. A. Dunstan, N. Scott, and A. K. Todd, "Screening for anxiety and depression: Reassessing the utility of the Zung scales," *BMC Psychiatry*, vol. 17, no. 1, pp. 1–8, Dec. 2017.
4. M. N. Norhayati, N. H. N. Hazlina, A. R. Asrenee, and W. M. A. W. Emilin, "Magnitude and risk factors for postpartum symptoms: A literature review," *J. Affect. Disorders*, vol. 175, pp. 34–52, Apr. 2015.
5. Weld, G., Zhang, A. X., & Althoff, T. (2021) = "Reddit Community Values Surveys". Retrieved from [https://behavioral-data.github.io/reddit\\_values\\_surveys\\_public/](https://behavioral-data.github.io/reddit_values_surveys_public/)
6. Shaikh, R. (2021) = "Unlocking the Power of OpenAI API: A Comprehensive Implementation Guide". Retrieved from <https://medium.com/@shaikhrayyan123/unlocking-the-power-of-openai-api-a-comprehensive-implementation-guide-f36f83bac7b9>
7. SpringerLink. (2022) = "AI-Based Modeling". Retrieved from <https://link.springer.com/article/10.1007/s42979-022-01043-x>
8. IEEE Xplore. (2022) = "Generative AI: A Review on Models and Applications". Retrieved from <https://ieeexplore.ieee.org/document/10421601>
9. SpringerLink. (2021)= "Future Directions for Chatbot Research: An Interdisciplinary Research Agenda". Retrieved from <https://link.springer.com/article/10.1007/s00607-021-01016-7>



INTERNATIONAL  
STANDARD  
SERIAL  
NUMBER  
INDIA



# INTERNATIONAL JOURNAL OF INNOVATIVE RESEARCH

IN SCIENCE | ENGINEERING | TECHNOLOGY

 9940 572 462  6381 907 438  [ijirset@gmail.com](mailto:ijirset@gmail.com)



[www.ijirset.com](http://www.ijirset.com)

Scan to save the contact details